

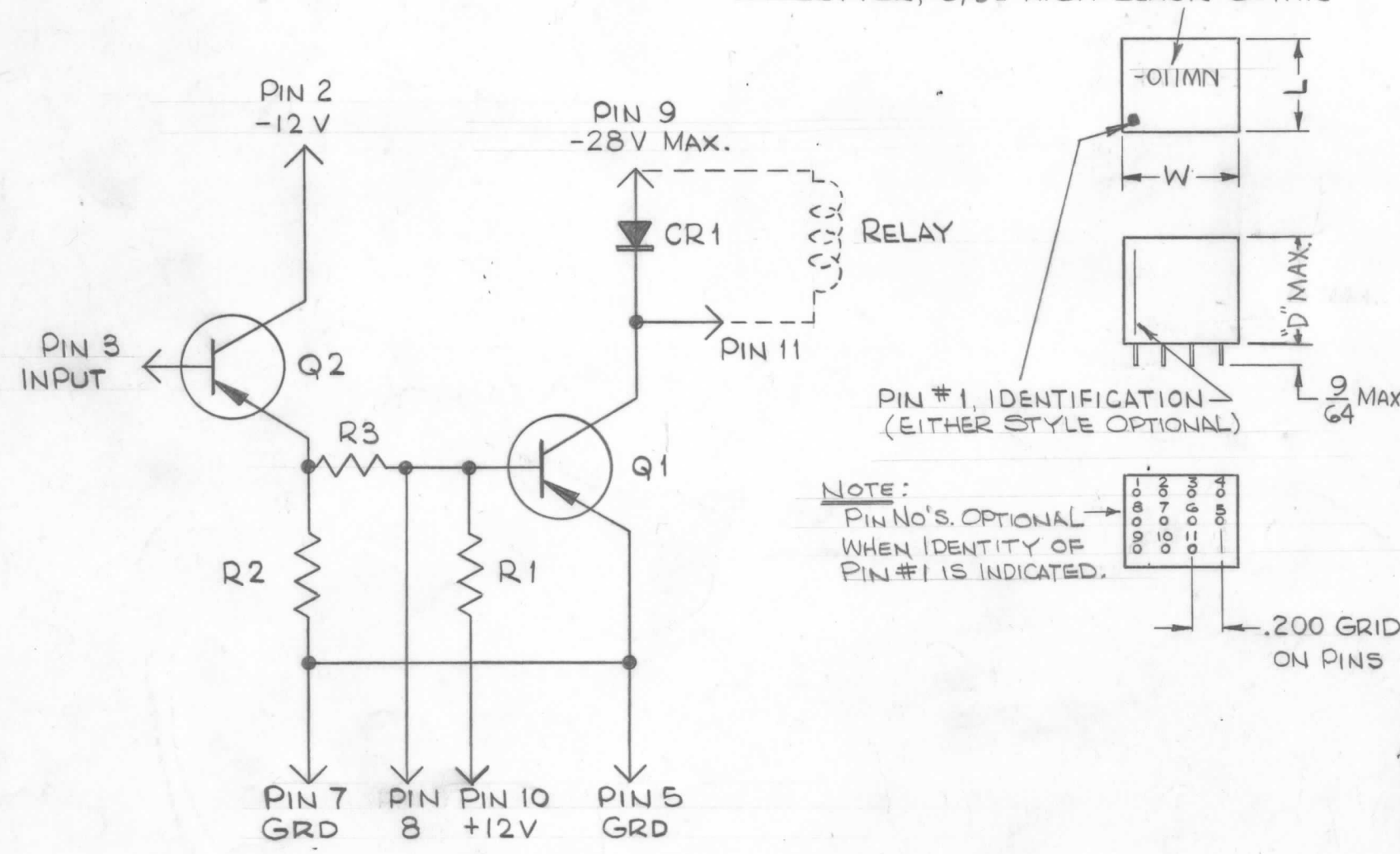
TMC PART NO.	MFR. PART NO.	MFR. TYPE NO.	RANGE	SIZE			REMARKS
				W	L	D	
NW110-1		RD-M		.800	.630	.770	

REVISIONS						
SYM	DESCRIPTION	DATE	E.M.N. NO.	DRAFT	CHKD	APPD
X1	SPECIFICATIONS ADDED	6-29-65		JHE		
X2	400MA SURGE ADDED TO "CURRENT" SPEC. MATERIAL & COLOR ADDED	10/7/65		JC		
Ø	ORIGINAL RELEASE FOR PRODUCTION	10/8/65		H.V.		
A	PICTORIAL REVISED, NOTE "I" ADDED	5/2/66	16184	HGA		
B	MAX. ADDED TO "D" DIM	9/11/67	18484	H.G.		FE

NW110

NOTE:  
1- POLARIZING PIN IS PIN #12.

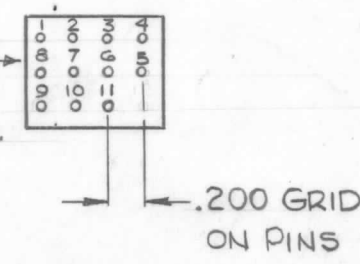
STAMP TMC PART NO. W/LATEST REV. LETTER, 3/32 HIGH BLACK GOTHIC



— SPECIFICATIONS —

OPERATION: 28V MAX.  
CURRENT: 200 MA MAX. (400MA SURGE)  
OPERATING TEMP.: -35°C TO +65°C  
INPUT: -8V TO -12V.

NOTE:  
PIN NO.'S. OPTIONAL WHEN IDENTITY OF PIN #1 IS INDICATED.



REQ'D.	ITEM	PART NUMBER	DESCRIPTION	SYMBOL
EATON LIST OF MATERIAL				
MATERIAL		THE TECHNICAL MATERIEL CORP. MAMARONECK, NEW YORK		
FINISH		TITLE		
EPOXY (GRAY)		RELAY, DRIVER DIGITAL MODULE		
UNLESS OTHERWISE SPECIFIED DIMENSIONS ARE IN INCHES AND INCLUDE CHEMICALLY APPLIED OR PLATED FINISHES		DRAWN H. AUSTIN	DATE 7-8-65	FINAL APPROVAL J. E. Eaton
		CHECKED JCS	DATE 10/7/65	10/7/65
DECIMALS .X ± .05 .XX ± .01 .XXX ± .005		FRACTIONS ± 1/64 ANGLES ± 0° 30'		
TOLERANCES		ELECT. DES.	DATE	
		MECH. DES.	DATE	
NW 110				B
SHEET				REV. LTR.

RTMU-1		
Q'TY./UNIT	MODEL USED ON	ASS'Y. NO.
#	C S401-167	

NOTES

THE CONTENTS OF THIS DRAWING ARE THE EXCLUSIVE PROPERTY OF THE TECHNICAL MATERIEL CORP. ITS UNAUTHORIZED USE OR REPRODUCTION IN WHOLE OR IN PART IS STRICTLY FORBIDDEN.