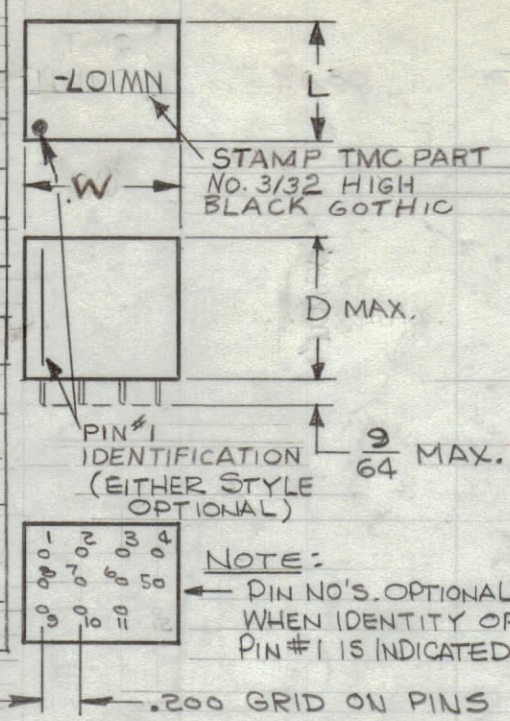
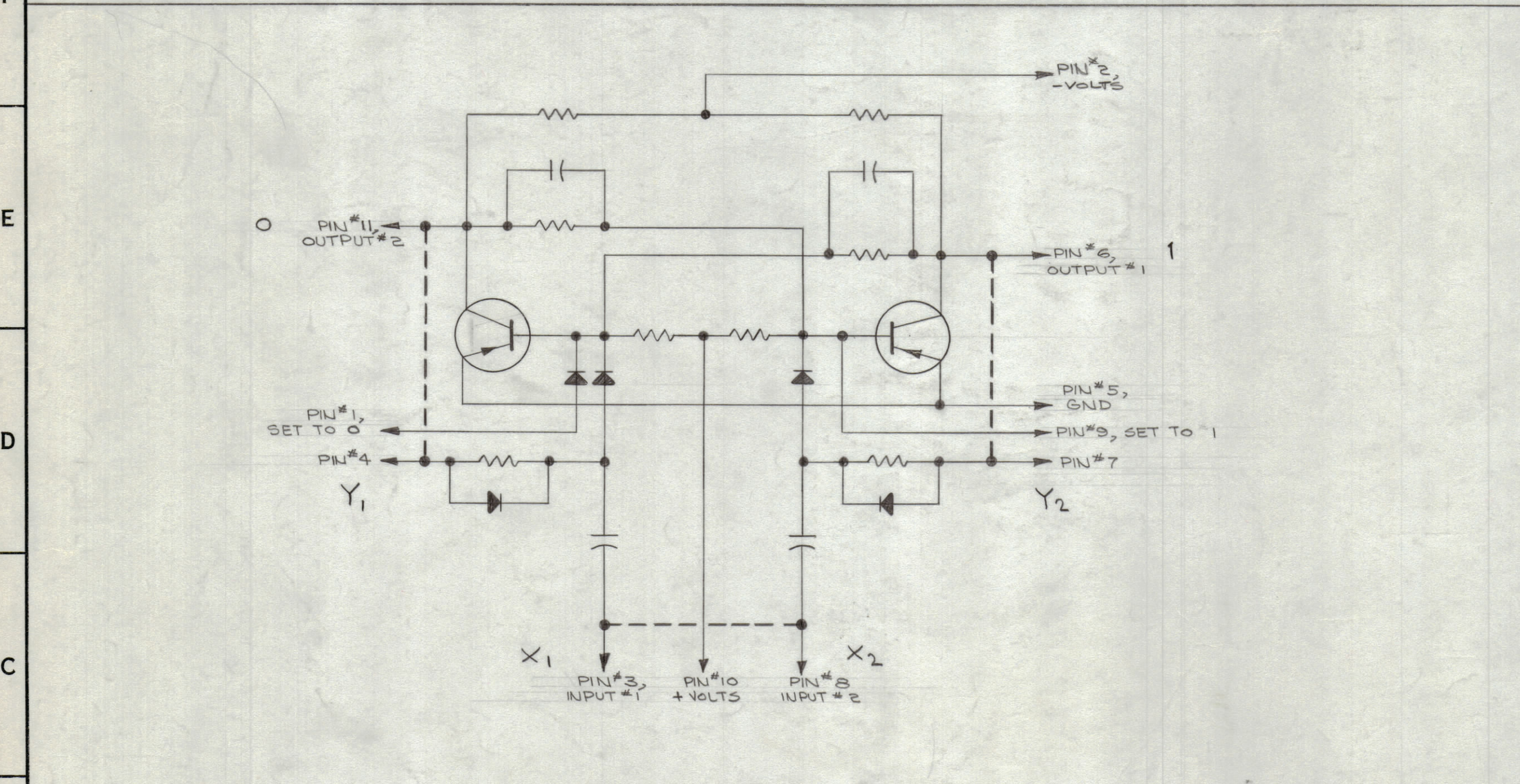


TMC PART NUMBER	MFG PART NUMBER	MFG TYPE NUMBER	SWITCHING CHARACTERISTICS	SCHEMATIC SEE NOTE NO.	RANGE	SIZES			OPERATING TEMPERATURE
						"W"	"L"	"D"	
NW107-1x	730B0020	FF11-1x	B	2	100KC	.800	.630	.770	-35°C TO +65°C
-2x	21	-2x	B	3		.800	.630	.770	
-3x	22	-3x	B	4		.800	.630	.770	
-4x	52	-4x	B	5		.800	.630	.770	
-11	20	-1-A	B	2		.800	.630	.770	-35°C TO +85°C
-12	21	-2-A	B	3		.800	.630	.770	
-13	22	-3-A	B	4		.800	.630	.770	
-14	52	-4-A	B	5		.800	.630	.770	
-21	20	-1-B	B	2		.800	.630	.460	
-22	21	-2-B	B	3		.800	.630	.460	
-23	22	-3-B	B	4		.800	.630	.460	
-24	52	-4-B	B	5		.800	.630	.460	



REVISIONS						
ZONE	SYM	DESCRIPTION	DATE	E.M.N. NO.	DRAFT	CHKD
#	Ø	ORIGINAL RELEASE FOR PRODUCTION	12-18-64	X		
	A	NW107-11,12,13,14,21,22,23,24, ADDED. NOTE 7 DELETED. SIZES, OPER. TEMP. COLS. ADDED. L WAS .630, D WAS .770, W WAS .800.	6/30/65	14367	D.V.V.	
	B	PICTORIAL REVISED, NOTE 9 ADDED	5-2-66	16184	H.L.A.	
	C	460 DIM'S WERE .375 Ø MAX. ADDED TO "D" DIM.	9-11-67	18484	H.S.	

SWITCHING CHARACTERISTICS	
A-6 VOLT LOGIC	B-12 VOLT LOGIC
INPUT	INPUT
AMPLITUDE, -3.5 TO -6 V	AMPLITUDE, -6 V TO -10 V
TR UP TO .5µ SEC	TR UP TO .5µ SEC
TF UP TO 5µ SEC	TF UP TO 5µ SEC
OUTPUT	OUTPUT
AMPLITUDE, -5 V	AMPLITUDE, -10 V
TR .1µ SEC	TR .1µ SEC
TF .2µ SEC	TF .2µ SEC



- NOTE:
- ON SCHEMATIC, DOTTED LINES DENOTE INTERNAL CONNECTIONS.
  - BASIC SCHEMATIC WITH NO INTERNAL CONNECTIONS.
  - INTERNAL CONNECTION BETWEEN PIN 3 & PIN 8.
  - INTERNAL CONNECTIONS BETWEEN PIN 3 & PIN 8, PIN 4 & PIN 11, PIN 6 & PIN 7.
  - INTERNAL CONNECTIONS BETWEEN PIN 4 & PIN 11, PIN 6 & PIN 7.
  - USABLE ON NEGATIVE AND POSITIVE LOGIC.
  - DELETED
  - S INDICATES DC RESET.
  - POLARIZING PIN IS PIN #12.

NW107-1x/NW107-11/NW107-21

LOGIC EQUATIONS

FOR COUNTER & SCALER APPLICATION:

$$Q(T+\delta) = Q(T) \oplus X(T)$$

FOR STORAGE & SHIFT:

$$Q(T+\delta) = \bar{Q}(T)X_2(T) + Q(T)\bar{X}_1(T)$$

FOR SHIFT REGISTER:

$$Q(T+\delta) = Y_1(T) \bar{Y}_2(T) x(T)$$

Y1 Y2 = 0

SYSTEM, SYMBOL SCHEMATIC

NW107-2/NW107-12/NW107-22

LOGIC EQUATIONS

$$Q(T+\delta) = Y_1(T) \bar{Y}_2(T) x(T)$$

Y1(T) Y2(T) = 0

SYSTEM, SYMBOL SCHEMATIC

NW107-3/NW107-13/NW107-23

LOGIC EQUATIONS

$$Q(T+\delta) = Q(T) \oplus X(T)$$

SYSTEM, SYMBOL SCHEMATIC

NW107-4x/NW107-14/NW107-24

LOGIC EQUATIONS

$$Q(T+\delta) = \bar{Q}(T) X_2(T) + Q(T) \bar{X}_1(T)$$

X1 X2 = 0 (AT CLOCK TIME)

SYSTEM, SYMBOL SCHEMATIC

REQ'D.	ITEM	PART NUMBER	DESCRIPTION	SYMBOL
	EATON LIST OF MATERIAL			
MATERIAL	EPOXY (RED)		THE TECHNICAL MATERIEL CORP. MAMARONECK, NEW YORK	
FINISH	RED		TITLE NETWORK, DIGITAL FLIP FLOP	
UNLESS OTHERWISE SPECIFIED DIMENSIONS ARE IN INCHES AND INCLUDE CHEMICALLY APPLIED OR PLATED FINISHES	DRAWN	DATE	FINAL APPROVAL	DATE
DECIMALS .X ± .05 .XX ± .01 .XXX ± .005	CHECKED	12-18-64	Eaton	9/23/65
FRACTIONS ± 1/64 ANGLES ± 0° 30'	ELECT. DES.	DATE	NW107	C
	MECH. DES.	DATE		
			SHEET	REV. LTR.

RTMU-1		
QTY./UNIT	MODEL USED ON	ASS'Y. NO.
SCALE 1:1	CODE C	5401-167
THE CONTENTS OF THIS DRAWING ARE THE EXCLUSIVE PROPERTY OF THE TECHNICAL MATERIEL CORP. ITS UNAUTHORIZED USE OR REPRODUCTION IN WHOLE OR IN PART IS STRICTLY FORBIDDEN.		

NOTES