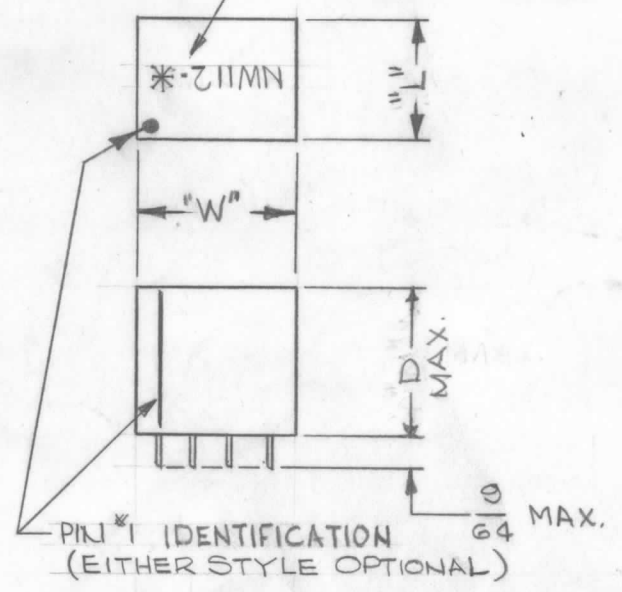


TMC PART NUMBER	MFG PART NUMBER	MFG. TYPE NUMBER	SWITCHING CHAR.	SIZES			OPERATING TEMPERATURE
				"W"	"L"	"D"	
NW112	730B0063	PF12-1	A or B	.800	.630	.770	-35°C TO +65°C
NW112-II	730B0063	PF12-1-A	A OR B	.800	.630	.770	-35°C TO +85°C
NW112-2I	730B0063	PF12-1-B	A OR B	.800	.630	.460	-35°C TO +85°C

D
NW112

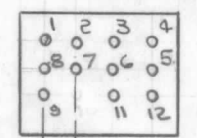
REVISIONS						
SYM	DESCRIPTION	DATE	E.M.N. NO.	DRAFT	CHKD	APPD
X	EXPER. RELEASE	12-15-64	X			
X1	CLARIFICATION OF DWG	1-4-65	X1			
Ø	ORIGINAL RELEASE FOR PRODUCTION	1-14-65	Ø	J.L.		
A	P/N NW112 WAS NW112-1	6-22-65	14204	D.V.V.	J.P.	FE
B	NW112-1I, 2I OPER. TEMP. COL. ADDED. NOTE 2" DELETED	6-29-65	14367	D.V.V.	J.P.	FE
C	PICTORIAL REVISED, NOTE 2 ADDED	5-2-66	16184	H.L.A.	J.P.	FE
D	460 DIM. WAS .375 & MAX. ADDED TO "D" DIM	9-11-67	18484	H.G.		FE

STAMP TMC PART NO. 3/32 HIGH BLACK GOTHIC.

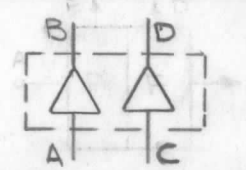


SWITCHING CHARACTERISTICS	
A-6VOLTS LOGIC INPUT	B-12VOLTS LOGIC INPUT
4.0V MIN.	-6.5V MIN.
OUTPUT	OUTPUT
-3.5V MIN.	-6.0V MIN.

NOTE:
1. USABLE ON NEGATIVE OR POSITIVE LOGIC.
2. POLARIZING PIN IS PIN # 10.



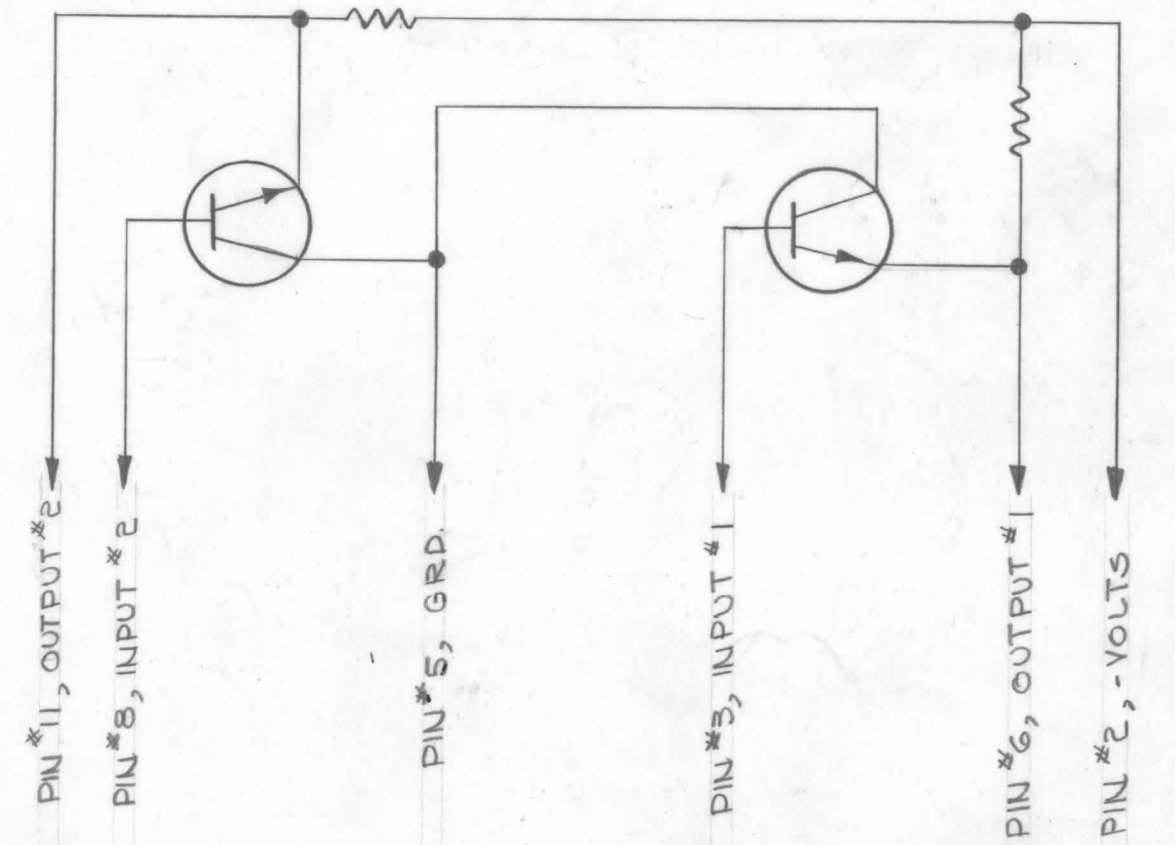
NOTE: PIN NO'S. OPTIONAL WHEN IDENTITY OF PIN #1 IS INDICATED.



B=A
D=C
SYMBOL SYSTEM DIAGRAM

RTMU-1	
Q'TY./UNIT	MODEL USED ON
SCALE 1:1	CODE C
	ASS'Y. NO. 5401-167

THE CONTENTS OF THIS DRAWING ARE THE EXCLUSIVE PROPERTY OF THE TECHNICAL MATERIEL CORP. ITS UNAUTHORIZED USE OR REPRODUCTION IN WHOLE OR IN PART IS STRICTLY FORBIDDEN.



REQ'D.	ITEM	PART NUMBER	DESCRIPTION	SYMBOL
EATON LIST OF MATERIAL				
MATERIAL			THE TECHNICAL MATERIEL CORP.	
EPOXY (ORANGE)			MAMARONECK, NEW YORK	
FINISH			TITLE	
ORANGE			NETWORK, DIGITAL POSITIVE EMITTER FOLLOWER	
UNLESS OTHERWISE SPECIFIED DIMENSIONS ARE IN INCHES AND INCLUDE CHEMICALLY APPLIED OR PLATED FINISHES			DRAWN	DATE
			J. L. Soren	12-15-64
			CHECKED	DATE
			@	1-13-65
			ELECT. DES.	DATE
			MECH. DES.	DATE
			J.P.	1-13-65
			SHEET	
			NW112	
			D	
			REV. LTR.	

NOTES