

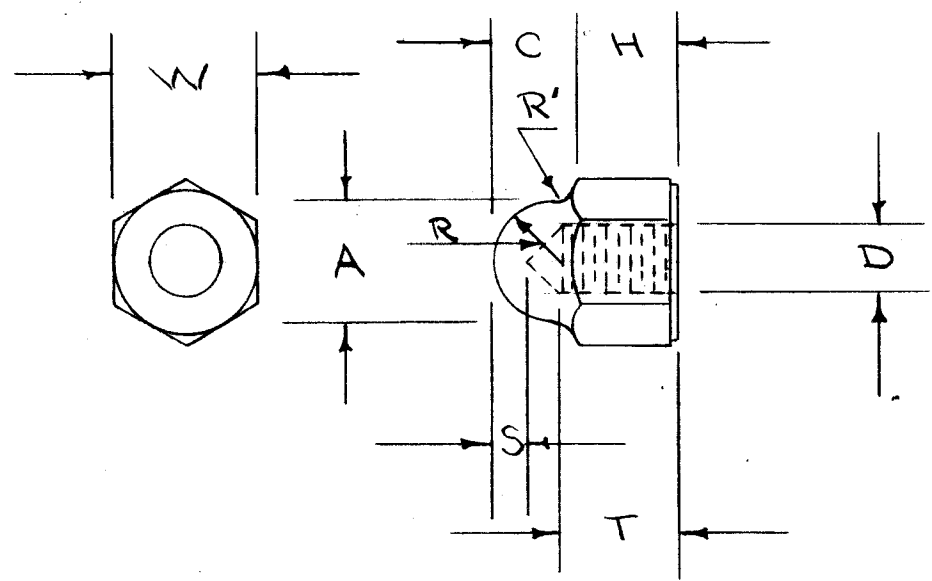
IF IT IS FOUND DESIRABLE TO CHANGE ANY TOLERANCE OR OTHER DETAIL SPECIFIED ON THIS DRAWING NOTIFY THE PURCHASER PROMPTLY.

MAXIMUM ALLOWABLE TOLERANCES HAVE BEEN DETERMINED AND DEVIATIONS WILL BE CAUSE FOR REJECTION. REMOVE ALL BURRS AND SHARP EDGES

STANDARD DRAWING

NTC---B

SIZE D	C	W LIGHT	W REG.	R	S MIN.	T REG.	THREADS PER UNIT	SIZE CODE
No. 6	3/16	5/16	---	9/64	1/32	9/64	32	0632
No. 8	3/16	5/16	---	9/64	1/32	5/32	32	0832
No. 10	15/64	3/8	---	11/64	1/32	3/16	32	1032
No. 12	15/64	3/8	---	11/64	1/32	7/32	24	1224
1/4	1/4	7/16	7/16	3/16	3/64	1/4	20	2520
5/16	17/64	1/2	9/16	13/64	3/64	5/16	18	3118
3/8	19/64	9/16	5/8	15/64	3/64	3/8	16	3716
7/16	11/32	5/8	3/4	9/32	3/64	7/16	14	4314
No. 4	7/64	1/4	---	7/64	1/32	1/8	40	0440



$A = (W - 1/32)$
 $H = D$ FOR SIZES 6 TO 10 INCLUSIVE; 1.138 FOR SIZE 4"
 $H = (7/8)D$ FOR SIZES 12 TO 7/16 INCLUSIVE
 $H' = (3/4)D$ FOR LOW NUTS, LIGHT SERIES ONLY
 $R' = 1/64$
 FOR LOW TYPE NUTS $T = T_{REG} - (H - H')$

SERIES
 L - LIGHT
 R - REGULAR

MATERIAL
 B - BRASS
 R - BRONZE
 S - STEEL
 SS - STAINLESS STEEL

FINISH
 B - BLACK NICKEL
 C - CADMIUM
 N - BRIGHT NICKEL
 S - PASSIVATE, STAINLESS ONLY.
 P - SILVER PLATE

NUT TYPE SIZE MATERIAL FINISH SERIES
 CAP 6-32 BRASS NICKEL LIGHT

NTC 0632 BNL

NOTICE TO PERSONS RECEIVING THIS DRAWING

THE TECHNICAL MATERIEL CORPORATION claims proprietary right in the material disclosed hereon. This drawing is issued in confidence for engineering information only and may not be reproduced or used to manufacture anything shown hereon without permission from THE TECHNICAL MATERIEL CORPORATION to the user. The user agrees to indemnify and hold the corporation harmless from all claims, damages, and expenses of any kind.

Property of:
 THE TECHNICAL MATERIEL CORPORATION
 3100 AVENUE 208, NEW YORK

ISSUE	ITEM	CHANGED FROM	DATE	CN. NO.	DRAFTS	CHECKER	ENG. APP.
B		FINISH WAS CADMIUM NO. 4 NTC ADDED	6.6.66	16340	WTD	[Signature]	[Signature]
A	I	"P" ADDED TO FINISH	1-3-63	7948	[Signature]	[Signature]	[Signature]
#	#	REDRAWN - NO CHANGE	2/24/54	-	C.D.D.	[Signature]	[Signature]

TOLERANCES		SCALE:	
ALL OTHERS	DEC. DIM. ± FRAC. DIM. ± ANGULAR DIM. ±	DRILL, PUNCH, COMMERCIAL STOCK SIZES AND MANUFACTURERS TOLERANCES ARE NOT INCLUDED.	
MODEL	PROJECT NO.	ASS'Y. NO.	DATE
USED ON			

REQ.	ITEM	PART NO.	DESCRIPTION	SYMBOL
			THE TECHNICAL MATERIEL CORP. MAMARONECK, NEW YORK	
			NUTS, CAP	
			CDD 6-24-S4	G.T.D.
			TYPE & TEMPER	
			HEAT TREAT. SPEC.	
			FINISH & SPEC. NO.	
			DRAWN	ELEC. DES. APP.
			CHECKED	MECH. DES. APP.
			FINAL APPROVAL	
			NTC---B	