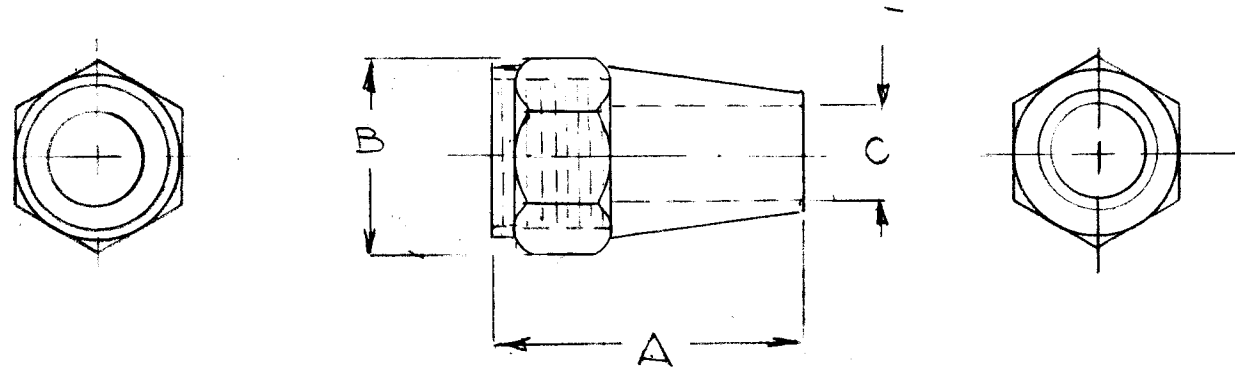


TMC P/NO	MFG P/NO	TYPE	DIMENSIONS (REF.)			THD
			A	B	C	
NT 162-1	5060K13	LONG NUT	1 1/8	5/8	5/16 D.	.500-20
NT 162-2	5060K15	LONG NUT	1 5/8	7/8	1/2 D.	.750-16
NT 162-3	5060K17	LONG NUT			3/4 DIA	1.0-12
NT -4						
NT -5						

REVISIONS							
E.M.N. NO.	DRAFT	CHKD	ZONE	LTR	DESCRIPTION	DATE	APPROVED



—	AW 109-3	
QTY / UNIT	MODEL USED ON	ASS'Y NO.
APPLICATION		
	CODE	

NOTICE TO PERSONS RECEIVING THIS DRAWING
THE TECHNICAL MATERIEL CORPORATION claims proprietary right in the material disclosed hereon. This drawing is issued in confidence for engineering information only and may not be reproduced or used to manufacture anything shown hereon without permission from **THE TECHNICAL MATERIEL CORPORATION** to the user. This drawing is loaned for mutual assistance and is subject to recall at any time.

UNLESS OTHERWISE SPECIFIED
 DIMENSIONS ARE IN INCHES
 AND INCLUDE CHEMICALLY APPLIED
 OR PLATED FINISHES

DECIMALS FRACTIONS
 .X ± .05 1/64
 .XX ± .01 TOLS. ANGLES
 .XXX ± .005 0° - 30'

MATERIAL
BRASS

FINISH

REQ'D	ITEM	PART NUMBER	DESCRIPTION	SYM.
LIST OF MATERIAL				
THE TECHNICAL MATERIEL CORP. MAMARONECK, NEW YORK				
NUT TUBE FITTING				
FINAL APPROVAL <i>[Signature]</i>		DATE 12/10/98		
MECH. DES.		DATE		
ELECT. DES.		DATE		
CHECKED		DATE		
DRAWN <i>G.D.L.</i>		DATE 7/1/98		
SIZE	CODE IDENT. NO.	DWG NO.	ISSUE	
B	82679	NT 162		
SCALE 1:1			SHEET	OF