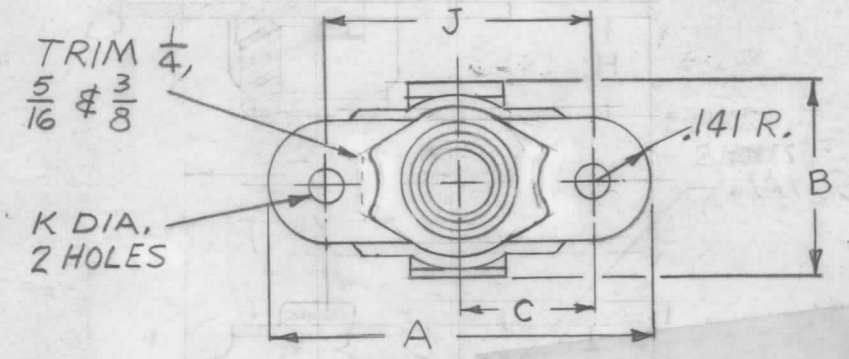
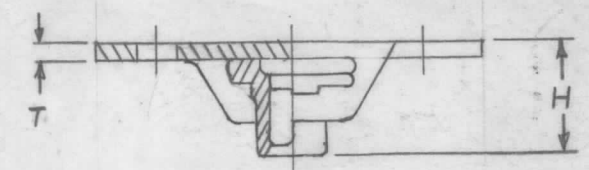


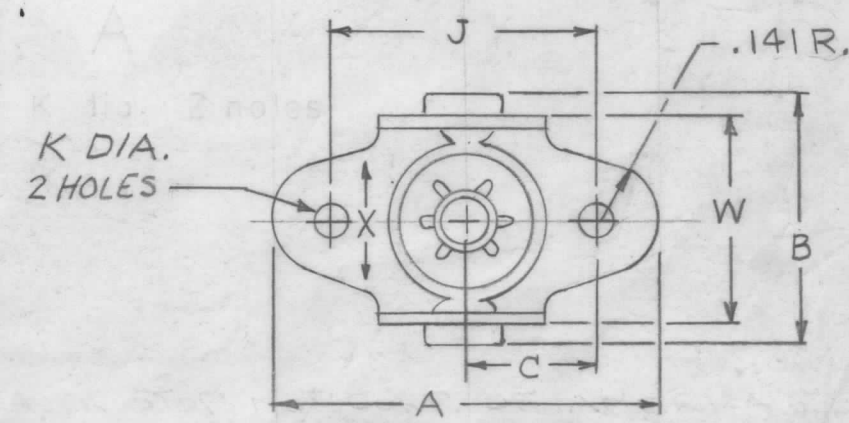
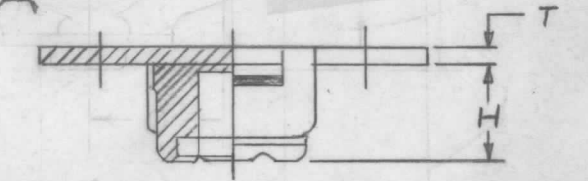
C	THD. SIZE	SIZE CODE	MFR PART NO.	NUT MAT. & FINISH	BASKET MAT. & FINISH	MAT. & FINISH CODE	A	B	W	T	C	K	H	J	STYLE
							±.015	±.015	±.05	±.015	±.005	+0.005 -0.000	±.015	±.002	
117-1	6-32		22NA 21-22-62	STEEL CAD. PL.	STEEL CAD. PL.	A									
	NC-3B	0632	22NA 21-68-62	" " "	ALUM. ALLOY	B	.969	.672	.531	.032	.344	.098	.281	.688	A
			68NA 21-68-62	ALUM. ALLOY	" "	C									
8-32			22NA 21-22-82	STEEL CAD. PL.	STEEL CAD. PL.	A									
	NC-3B	0832	22NA 21-68-82	" " "	ALUM. ALLOY	B	.969	.672	.531	.032	.344	.098	.281	.688	A
			68NA 21-68-82	ALUM. ALLOY	" "	C									
10-32			22NA 21-22-02	STEEL CAD. PL.	STEEL CAD. PL.	A									
	NF-3B	1032	22NA 21-68-02	" " "	ALUM. ALLOY	B	.969	.672	.531	.032	.344	.098	.281	.688	A
			68NA 21-68-02	ALUM. ALLOY	" "	C									
10-24			22NA 21-22-04	STEEL CAD. PL.	STEEL CAD. PL.	A									
	NC-3B	102A	22NA 21-68-04	" " "	ALUM. ALLOY	B	.969	.672	.531	.032	.344	.098	.281	.688	A
			68NA 21-68-04	ALUM. ALLOY	" "	C									
1/4-28			22NA 21-22-048	STEEL CAD. PL.	STEEL CAD. PL.	A									
	NF-3B	2528	22NA 21-68-048	" " "	ALUM. ALLOY	B	1.281	.734	.594	.032	.500	.098	.313	1.000	A
			68NA 21-68-048	ALUM. ALLOY	" "	C									
1/4-20			22NA 21-22-040	STEEL CAD. PL.	STEEL CAD. PL.	A									
	NC-3B	2520	22NA 21-68-040	" " "	ALUM. ALLOY	B	1.281	.734	.594	.032	.500	.098	.313	1.000	A
5/16-24															
NF-3B	3124	F52A3901-054	" " "	STEEL CAD. PL.	A	1.292	.609	—	.031	.500	.120	.318	1.000	B	

# STANDARD DRAWING

STYLE "B" TYPE "B"



STYLE "A"



STEEL BASKET MAT. - SAE 1010  
 ALUM. BASKET MAT. - 52S-X HARD ALUMINUM  
 NOTE - FOR SIZES 1024 - 2520 & 3124 CHECK AVAILABILITY WHEN ORDERING  
 ALUM. NUT MAT. - ALUM ALLOY 2017-T4, ANODIZED MIL-A-8625  
 ALUM. BASKET MAT. - ALUM ALLOY 5052-H32, ANODIZED MIL-A-8625 (MAY BE BLUE DYED.)  
 LOCKING INSERT - RED NYLON (250° F MAX.)  
 MIN. TOTAL FLOAT - X = .074, V = .094

TYPE DESIGNATION TO BE IN FOLLOWING FORM

NT 117 - 0832 A  
 TYPE NUMBER SIZE NUT & BASKET MAT'L & FINISH

NOTICE TO PERSONS RECEIVING THIS DRAWING

THE TECHNICAL MATERIEL CORPORATION claims proprietary right in the material disclosed hereon. This drawing is issued in confidence for engineering information only and may not be reproduced or used to manufacture anything shown hereon without permission from THE TECHNICAL MATERIEL CORPORATION to the user. This drawing is loaned for mutual assistance and is subject to recall at any time.

Property of:

THE TECHNICAL MATERIEL CORPORATION  
 MAMARONECK, NEW YORK

ISSUE	ITEM	CHANGED FROM	DATE	CH. NO.	DRAFTS	CHECKER	ENG. APP.
C		ON 5/16-24 "K" WAS .140	5.17.65	18931		HS	EFM
B		COMPLETELY REV.	3/6/68	18795		HS	FBI
A		VEX ADD. TO PICT CHART & NOTES REVISED.	5.10.65	14030		RL	JCB

SCALE: 5401-290

MAXIMUM ALLOWABLE TOLERANCES HAVE BEEN DETERMINED AND ANY DEVIATIONS WILL BE CAUSE FOR REJECTION. REMOVE ALL BURRS AND SHARP EDGES

REQ. ITEM	PART NO.	DESCRIPTION	SYMBOL
		THE TECHNICAL MATERIEL CORP. MAMARONECK, NEW YORK	
	STOCK SIZE	NUT, FLOATING ANCHOR	
	MATERIAL	TWO LUG BASKET	
	TYPE & TEMPER	HEAT TREAT. SPEC.	DRAWN
	FINISH & SPEC. NO.	ELEC. DES. APP.	MECH. DES. APP.

USED ON