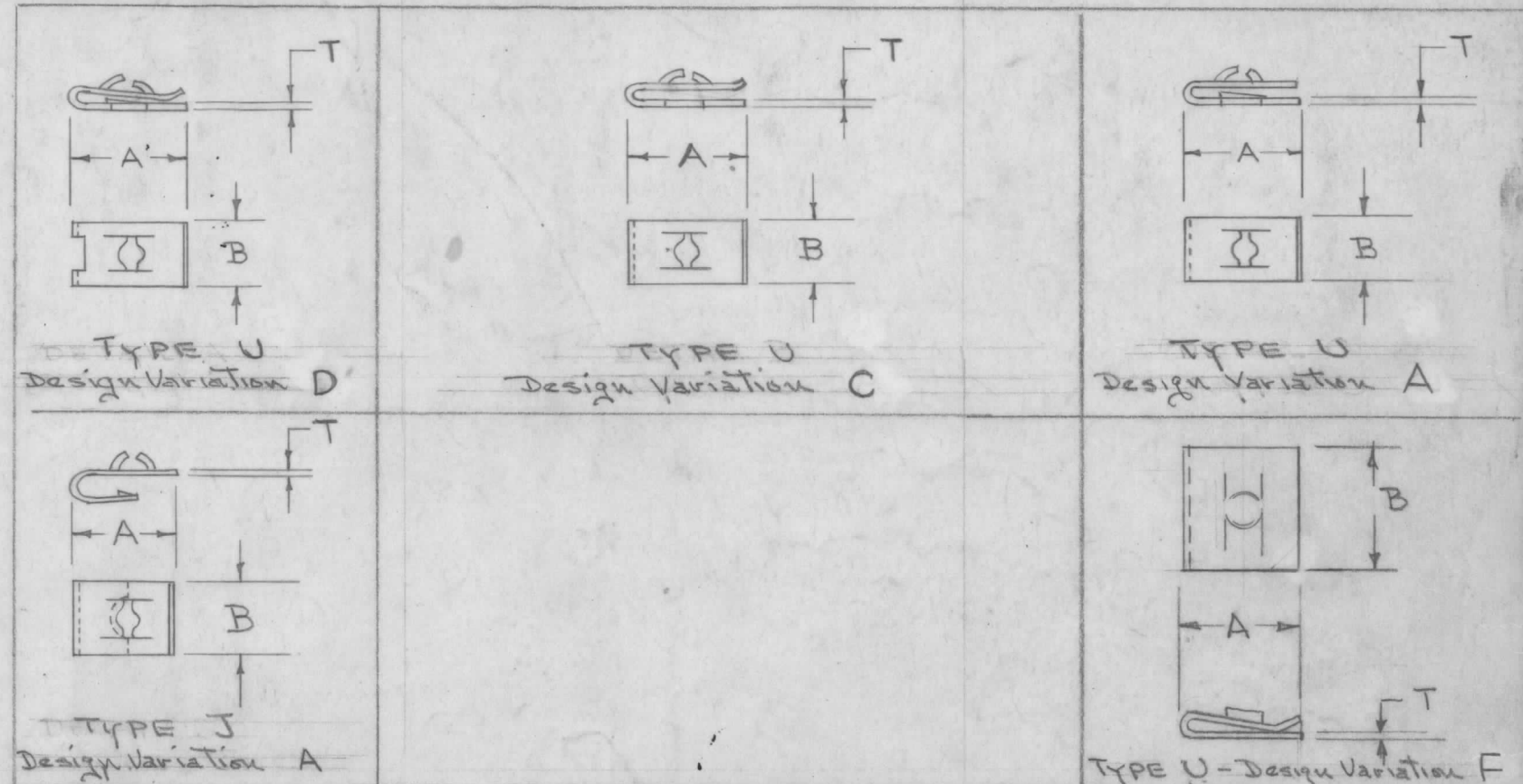
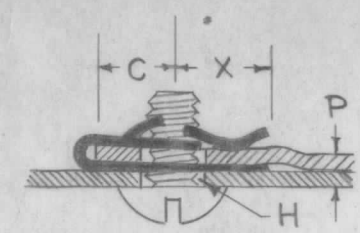


IF IT IS FOUND DESIRABLE TO CHANGE ANY TOLERANCE OR OTHER DETAIL SPECIFIED ON THIS DRAWING NOTIFY THE PURCHASER PROMPTLY.

MAXIMUM ALLOWABLE TOLERANCES HAVE BEEN DETERMINED AND DEVIATIONS WILL BE CAUSE FOR REJECTION. REMOVE ALL BURRS AND SHARP EDGES

TMC. NO.	CAT. NO. AND DESIGN VARIATION	DESIGN VARIATION	SCREW SIZE	PANEL RANGE	TYPE	A LENGTH	B WIDTH	X CENTER OF IMPRESSION TO END.	C MAX. CENTER OF HOLE TO EDGE	H PANEL HOLE DIAMETER	T MATERIAL THICKNESS
NT 108-1	C8091-632-24 DESIGN D	D	6-32	.04 to .05	U	3/64	1/2	7/32	7/32	3/16	.017
NT 108-2	C1887-632-24 DESIGN C	C	6-32	.03 to .04	U	23/64	5/16	1/64	5/32	5/32	.017
NT 108-3	C6005-632-24 DESIGN A	A	6-32	.04 to .05	U	23/64	5/16	1/64	5/32	7/32	.017
NT 108-4	C6227-632-24 DESIGN A	A	6-32	.04 to .05	J	23/64	5/16	3/16	5/32	3/16	.017
NT 108-5	C-1325-832-24 DESIGN F	F	8-32	.06 to .07	U	3/64	3/4	7/32	15/64	11/64	.017
NT 108-6	C7852-632-24 DESIGN D	D	6-32	.07 to .08	U	7/16	1/2	15/64	3/16	1/4	.017

NT 108 G  
STANDARD DRAWING



**NOTICE TO PERSONS RECEIVING THIS DRAWING**

THE TECHNICAL MATERIEL CORPORATION claims proprietary right in the material disclosed hereon. This drawing is issued in confidence for engineering information only and may not be reproduced or used to manufacture anything shown hereon without permission from THE TECHNICAL MATERIEL CORPORATION to the user. This drawing is loaned for mutual assistance and is subject to recall at any time.

Property of:  
THE TECHNICAL MATERIEL CORPORATION  
MAMARONECK, NEW YORK

REF.: TINNEMAN PRODUCTS, INC.

REQ.	ITEM	PART NO.	DESCRIPTION	SYMBOL
	#		THE TECHNICAL MATERIEL CORP. MAMARONECK, NEW YORK	
	STEEL	#	NUT, SPEED	
	MATERIAL	WEIGHT PER PC.		
	SPRING			
	TYPE & TEMPER		CDD 5-19-53	G.T.O
	HEAT TREATED		DRAWN	ELEC. DES. APP. MECH. DES. APP.
	HEAT TREAT. SPEC.		CHECKED	FINAL APPROVAL
	CAD. PLATE			
	FINISH & SPEC. NO.			

ISSUE	ITEM	CHANGED FROM	DATE	CN. NO.	DRAFTS	CHECKER	ENG. APP.
G		CAT. NO UPDATED FINISH ADDED	5-8-67	18169	L.A.K.		RH
F		ADD. NT108-6; CHG. DESIGN LETTERS; REV. PANEL THICKNESS	2/24/66	15762	H.L.A.		
E	2	NT-108-5 Added	2/19/58	5			
	1	Pictorials corrected					
D	1	Plating Des. WAS 69	9-5-57	4			
C	1	Plating Designation Was 24	9-5-57	3			
B	1	NT-108-2 WAS C6005-632-24 NT-108-3 WAS C1887-632-24	9/20/53	2			
A	1	REDRAWN WITH DETAILS ADDED	5/19/53	1	C.D.D.		

TOLERANCES		SCALE:
ALL OTHERS	DEC. DIM. ± FRAC. DIM. ± ANGULAR DIM. ±	7 XFK PER UNIT MODEL
DRILL, PUNCH, COMMERCIAL STOCK SIZES AND MANUFACTURERS TOLERANCES ARE NOT INCLUDED.		PROJECT NO. ASS'Y. NO. DATE

USED ON