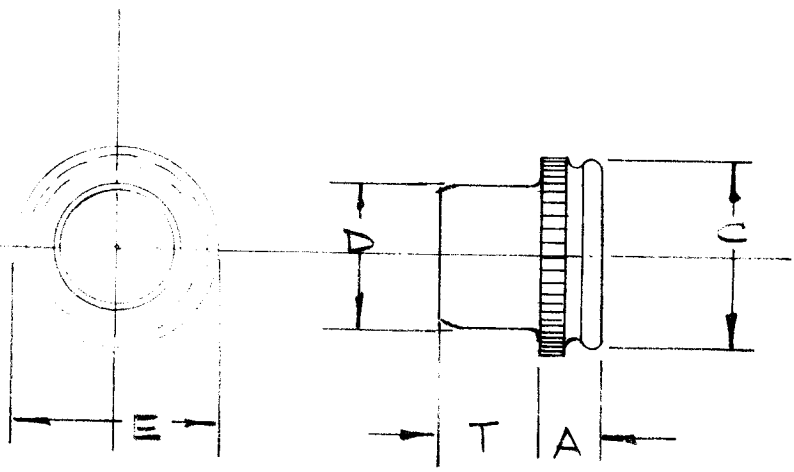


NT 10002

ISSUE	ITEM	CHANGED FROM	DATE	CN. NO.	DRAFTS	CHECKER	ENG. APP.	REQ.	ITEM	PART NO.	DESCRIPTION	SYMBOL
Ø		REL TO PROD	NOV 29/68		AD		<i>[Signature]</i>					

PART NO.	THD. SIZE	A (MAX)	C (+.002 / -.005)	D (MAX)	E	T (+.015 / -.000)	SHEET HOLE SIZE	MIN. DIST. CENTER TO EDGE	MIN. SHEET THICKNESS	TMC P/N
FE-140	4-40	.060	.171	.140	3/16	.065	.172 / .175	9/64	.040	-1
FE-632	6-32	.060	.213	.175	1/4	.075	.213 / .216	11/64	.040	-2
FE-832	8-32	.060	.289	.215	5/16	.090	.290 / .293	13/64	.060	-3
FE-032	10-32	.060	.289	.245	5/16	.110	.290 / .293	13/64	.060	-4
FE-0420	1/4-20	.060	.343	.318	3/8	.120	.344 / .347	9/32	.060	-5
FE-0428	1/4-28	.060	.343	.318	3/8	.120	.344 / .347	9/32	.060	-6



THREAD - CLASS 3B MIL-S-7742
 PERFORMANCE - MIL-N-25037B

STANDARD DRAWING

MANUFACTURED - S401-260

MODEL		PROJECT NO.		ASS'Y. NO.		DATE 28 NOV. 68		STOCK SIZE		TMC (Canada) LIMITED OTTAWA ONTARIO					
USED ON						303 ST. ST.		MATERIAL		MINIATURE FASTENER					
MAXIMUM ALLOWABLE TOLERANCES HAVE BEEN DETERMINED AND DEVIATIONS WILL BE CAUSE FOR REJECTION. REMOVE ALL BURRS AND SHARP EDGES						IF IT IS FOUND DESIRABLE TO CHANGE ANY TOLERANCE OR OTHER DETAIL SPECIFIED ON THIS DRAWING NOTIFY THE PURCHASER PROMPTLY.						WEIGHT PER PC.		SELF-LOCKING, SELF-CLINCHING	
												TOLERANCES		SCALE	
ALL OTHERS		DEC. DIM. ± .05		FRAC. DIM. ± 1/64		ANGULAR DIM. ± 0° 30'		DIMENSIONS IN INCHES UNLESS OTHERWISE SPECIFIED		DRILL PUNCH, COMMERCIAL STOCK SIZES AND MANUFACTURERS TOLERANCES ARE NOT INCLUDED.		PASSIVATED		FINISH & SPEC. NO.	
TOLERANCES						SCALE						CHECKED		FINAL APPROVAL	
														NT 10002 Ø	