

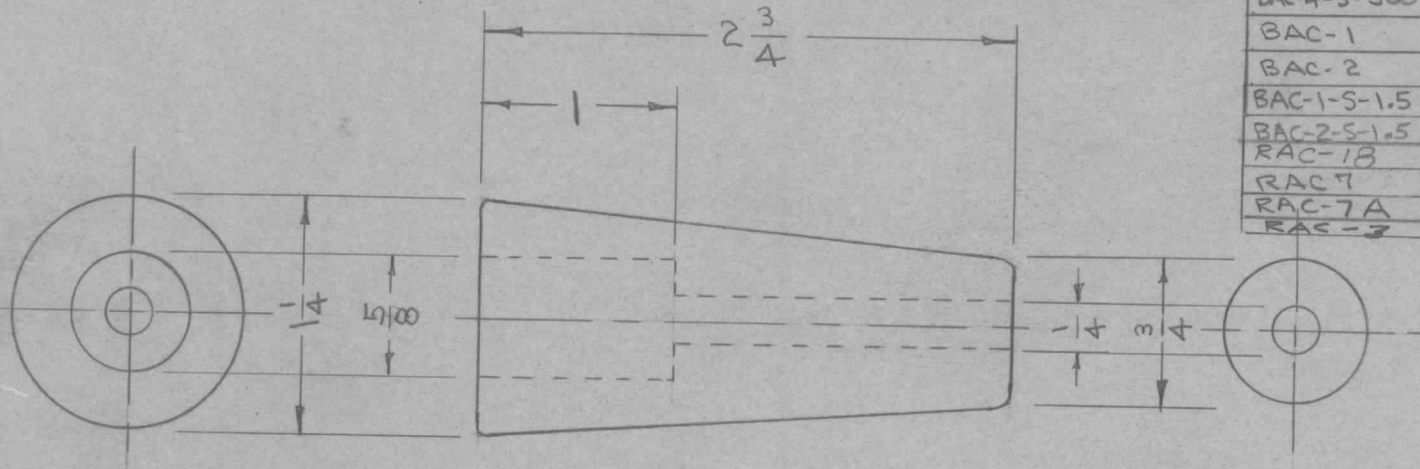
IF IT IS FOUND DESIRABLE TO CHANGE ANY TOLERANCE OR OTHER DETAIL SPECIFIED ON THIS DRAWING NOTIFY THE PURCHASER PROMPTLY.

NS-100 B

MAXIMUM ALLOWABLE TOLERANCES HAVE BEEN DETERMINED AND DEVIATIONS WILL BE CAUSE FOR REJECTION. REMOVE ALL BURRS AND SHARP EDGES

USED ON

MODEL	PROJECT NO.	ASS'Y. NO.	DATE
RAC	112	A-101	7-7-52
BAC-1-S-20	108	A-106	7-9-52
BAC-2-S-20	108	A-107	7-9-52
BAC-3-S-20	108	A-108	7-9-52
BAC-4-S-20	108	A-109	7-9-52
BAC-3-S-500	153	A-234	9-6-52
BAC-4-S-500	153	A-233	9-6-52
BAC-1	157	A-189	10-17-52
BAC-2	157	A-188	10-17-52
BAC-1-S-1.5	230	A-525	9-15-53
BAC-2-S-1.5	230	A-526	9-16-53
RAC-18	450	A-1137	12-2-53
RAC-7			3-14-56
RAC-7A		A-1354	10-30-56
RAC-7		A-1463	9-13-57



DIMENSIONS FOR REF. ONLY

REF.: BIRNBACH INSULATOR CO. NO. 4175

REQ.	ITEM	PART NO.	DESCRIPTION	SYMBOL
		#	THE TECHNICAL MATERIEL CORP. MAMARONECK, NEW YORK	
		STOCK SIZE		
		PORCELAIN	INSULATOR (OUTSIDE)	
		#		
		MATERIAL	WEIGHT PER PC.	
		TYPE & TEMPER	C.D.D. 3-24-53	
			DRAWN	ELEC. DES. APP.
		HEAT TREAT. SPEC.	MECH. DES. APP.	
			CHECKED	FINAL APPROVAL
		FINISH & SPEC. NO.		

B	1	RAC-7A WAS RAC-7	3/14/53	2	CDD	Jalle	ATT
A	1	REDRAWN AND DIMENSIONS CHANGED	3/24/53	1	C.D.D.	Jalle	1953
ISSUE	ITEM	CHANGED FROM	DATE	CN. NO.	DRAFTS	CHECKER	ENG. APP.

TOLERANCES		SCALE
ALL OTHERS	DEC. DIM. ± FRAC. DIM. ± ANGULAR DIM. ±	#
DRILL, PUNCH, COMMERCIAL STOCK SIZES AND MANUFACTURERS TOLERANCES ARE NOT INCLUDED.		

NS-100 B

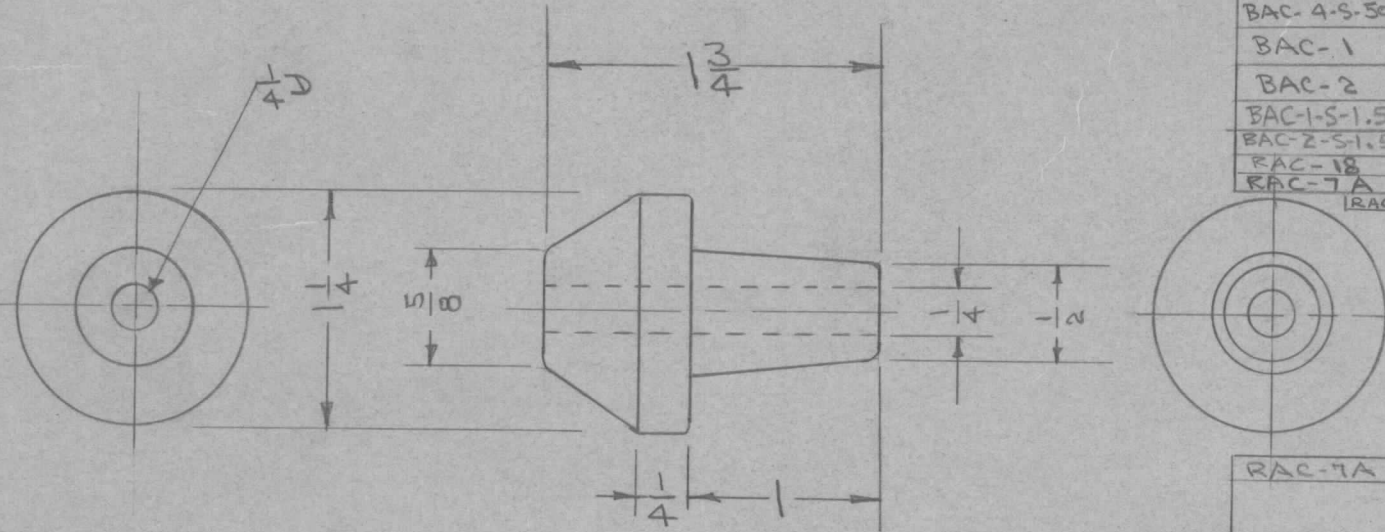
IF IT IS FOUND DESIRABLE TO CHANGE ANY TOLERANCE OR OTHER DETAIL SPECIFIED ON THIS DRAWING NOTIFY THE PURCHASER PROMPTLY.

NS-101 B

MAXIMUM ALLOWABLE TOLERANCES HAVE BEEN DETERMINED AND DEVIATIONS WILL BE CAUSE FOR REJECTION. REMOVE ALL BURRS AND SHARP EDGES

USED ON

MODEL	PROJECT NO.	ASS'Y. NO.	DATE
RAC	112	A-101	7-7-52
BAC-1-S-20	108	A-106	7-9-52
BAC-2-S-20	108	A-107	7-9-52
BAC-3-S-20	108	A-108	7-9-52
BAC-4-S-20	108	A-109	7-9-52
BAC-3-S-500	153	A-234	9-6-52
BAC-4-S-500	153	A-233	9-6-52
BAC-1	157	A-189	10-17-52
BAC-2	157	A-188	10-17-52
BAC-1-S-1.5	230	A-525	9-15-53
BAC-2-S-1.5	230	A-526	9-16-53
RAC-18	450	A-1137	12-2-55
RAC-7A		A-1354	10-30-56
RAC-3		A-1443	10-13-57



RAC-7A 3-14-56

DIMENSIONS FOR REF. ONLY

REF: BIRNBACH INSULATOR CO. NO: 4175

ISSUE	ITEM	CHANGED FROM	DATE	CN. NO.	DRAFTS	CHECKER	ENG. APP.
B	1	RAC-7A WAS RAC-7	3/16/56	2	OGS	JAR	AJT
A	1	REDRAWN - DIM. CHANGED	3/24/53	1	C.D.D.	JAR	OGS

REQ.	ITEM	PART NO.	DESCRIPTION	SYMBOL
			THE TECHNICAL MATERIEL CORP.	
			MAMARONECK, NEW YORK	
			INSULATOR (INSIDE)	
			MATERIAL	WEIGHT PER PC.
			TYPE & TEMPER	
			HEAT TREAT. SPEC.	
			FINISH & SPEC. NO.	

TOLERANCES		SCALE	DRILL, PUNCH, COMMERCIAL STOCK SIZES AND MANUFACTURERS TOLERANCES ARE NOT INCLUDED.
ALL OTHERS	DEC. DIM. ± FRAC. DIM. ± ANGULAR DIM. ±	1/4"	

C.D.D. 3-24-53  
DRAWN  
ELEC. DES. APP.  
MECH. DES. APP.  
CHECKED  
FINAL APPROVAL

NS-101 B



IF IT IS FOUND DESIRABLE TO CHANGE ANY TOLERANCE OR OTHER DETAIL SPECIFIED ON THIS DRAWING NOTIFY THE PURCHASER PROMPTLY.

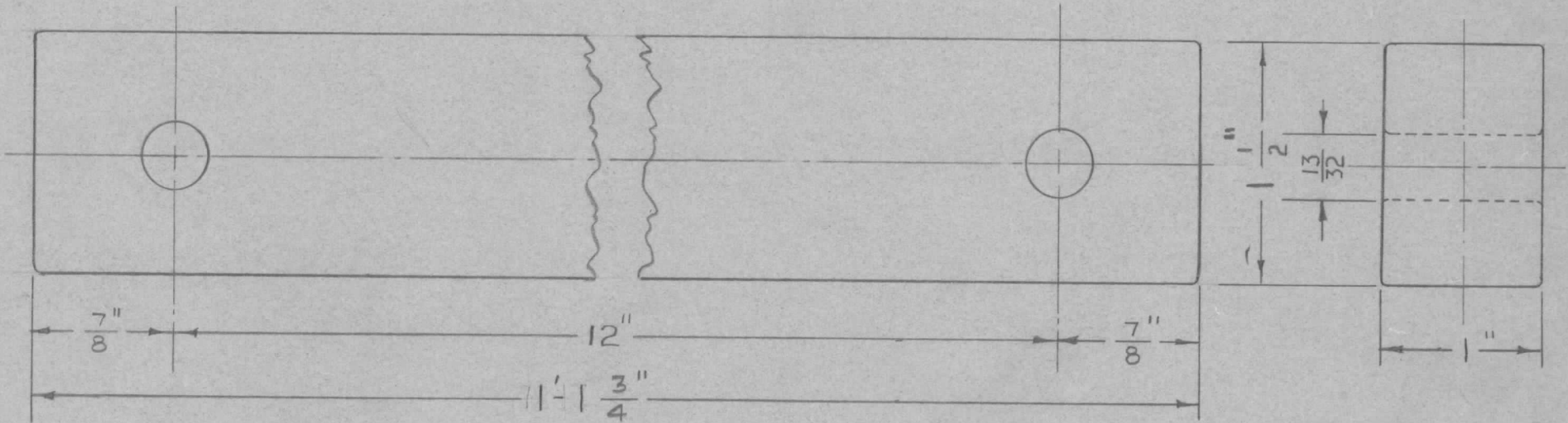
RELEASED

NS-105

MAXIMUM ALLOWABLE TOLERANCES HAVE BEEN DETERMINED AND DEVIATIONS WILL BE CAUSE FOR REJECTION. REMOVE ALL BURRS AND SHARP EDGES

USED ON

MODEL	PROJECT NO.	ASS'Y. NO.	DATE
	141	A-187	10-8-52



STRENGTH-1800LBS.

REF: LAPP RADIO SPECIALTIES # 25381

REQ.	ITEM	PART NO.	DESCRIPTION	SYMBOL
			THE TECHNICAL MATERIEL CORP. MAMARONECK, NEW YORK	
		STOCK SIZE	INSULATOR, STRAIN	
		MATERIAL	STEATITE	
		WEIGHT PER PC.		
		TYPE & TEMPER		
		HEAT TREAT. SPEC.		
		FINISH & SPEC. NO.	WHITE GLAZE	

ISSUE	ITEM	CHANGED FROM	DATE	CN. NO.	DRAFTS	CHECKER	ENG. APP.
TOLERANCES			SCALE FULL SIZE				
ALL OTHERS	DEC. DIM. ± FRAC. DIM. ± ANGULAR DIM. ±		DRILL, PUNCH, COMMERCIAL STOCK SIZES AND MANUFACTURERS TOLERANCES ARE NOT INCLUDED.				

10-8-52		
DRAWN	ELEC. DES. APP.	MECH. DES. APP.
10-9-52		
CHECKED	FINAL APPROVAL	
	NS-105	

IF IT IS FOUND DESIRABLE TO CHANGE ANY TOLERANCE OR OTHER DETAIL SPECIFIED ON THIS DRAWING NOTIFY THE PURCHASER PROMPTLY.

NS-106



MAXIMUM ALLOWABLE TOLERANCES HAVE BEEN DETERMINED AND DEVIATIONS WILL BE CAUSE FOR REJECTION. REMOVE ALL BURRS AND SHARP EDGES

USED ON

MODEL	PROJECT NO.	ASS'Y. NO.	DATE
RAC			

REF: BIRNBACH RADIO CO. PART # 4175

REQ.	ITEM	PART NO.	DESCRIPTION	SYMBOL
			THE TECHNICAL MATERIEL CORP. MAMARONECK, NEW YORK	
		STOCK SIZE	INSULATOR,	
		MATERIAL	FEED THRU	
		WEIGHT PER PC.		
		TYPE & TEMPER		
		HEAT TREAT. SPEC.		
		FINISH & SPEC. NO.		

Ø		ORIGINAL RELEASE	9/26/69		W			
ISSUE	ITEM	CHANGED FROM	DATE	CN. NO.	DRAFTS	CHECKER	ENG. APP.	
TOLERANCES			SCALE					
ALL OTHERS	DEC. DIM. ± FRAC. DIM. ± ANGULAR DIM. ±		DRILL, PUNCH, COMMERCIAL STOCK SIZES AND MANUFACTURERS TOLERANCES ARE NOT INCLUDED.					

DRAWN  
ELEC. DES. APP.  
MECH. DES. APP.  
CHECKED  
FINAL APPROVAL  
NS-106

9/26/69



IF IT IS FOUND DESIRABLE TO CHANGE ANY TOLERANCE OR OTHER DETAIL SPECIFIED ON THIS DRAWING NOTIFY THE PURCHASER PROMPTLY.

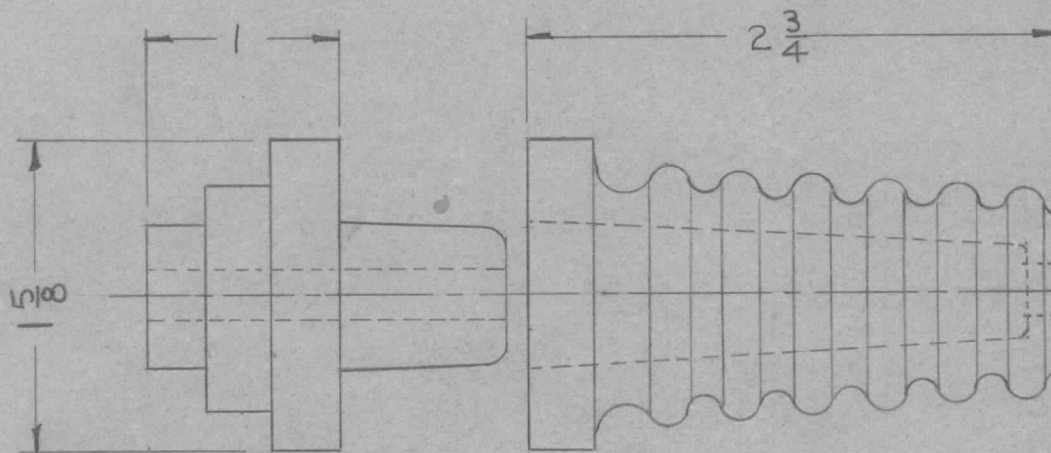
NS-107 B

MAXIMUM ALLOWABLE TOLERANCES HAVE BEEN DETERMINED AND DEVIATIONS WILL BE CAUSE FOR REJECTION. REMOVE ALL BURRS AND SHARP EDGES

RELEASED

USED ON

MODEL	PROJECT NO.	ASS'Y. NO.	DATE
DAC-1	180	A-455	5-1-53



HARDWARE SUPPLIED BY BIRNBACH WITH EACH UNIT.

- 1 PC - 1/4 X 20 ROD 5 1/2" LONG
- 4 " - 1/4 X 20 NUTS
- 4 " - " WASHERS
- 2 " - CORK WASHERS

DIMENSIONS FOR REF. ONLY

MOUNTING HOLE 3/4 DIA.

REF: BIRNBACH CAT.# 4276

B	1	5 1/2 WAS 5/8 (ROD)	8/29/49	19561	KD	JLO	EFM	JL
A	1	HWDF. ADDED	1/20/56	1	COO	JLO	WZ	
ISSUE	ITEM	CHANGED FROM	DATE	CN. NO.	DRAFTS	CHECKER	ENG. APP.	

REQ.	ITEM	PART NO.	DESCRIPTION	SYMBOL
			THE TECHNICAL MATERIEL CORP. MAMARONECK, NEW YORK	
STOCK SIZE			INSULATOR	
MATERIAL			FEED THRU	
WEIGHT PER PC.			JAO 5/5/53	
TYPE & TEMPER			DRAWN	ELEC. DES. APP.
			C.D.D.	MECH. DES. APP.
HEAT TREAT. SPEC.			CHECKED	FINAL APPROVAL
FINISH & SPEC. NO.				NS-107 B

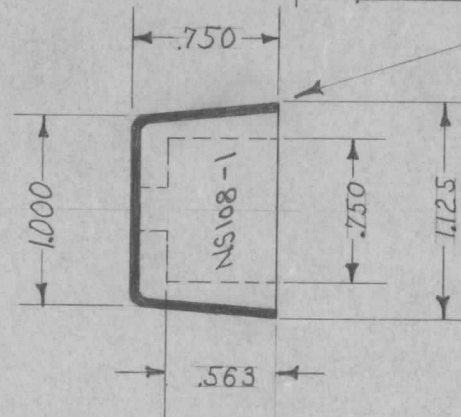
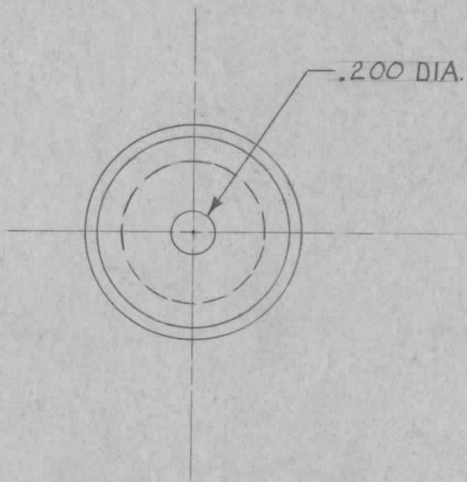
TOLERANCES		SCALE
ALL OTHERS	DEC. DIM. ± FRAC. DIM. ± ANGULAR DIM. ±	DRILL, PUNCH, COMMERCIAL STOCK SIZES AND MANUFACTURERS TOLERANCES ARE NOT INCLUDED.

IF IT IS FOUND DESIRABLE TO CHANGE ANY TOLERANCE OR OTHER DETAIL SPECIFIED ON THIS DRAWING NOTIFY THE PURCHASER PROMPTLY.

NS-108

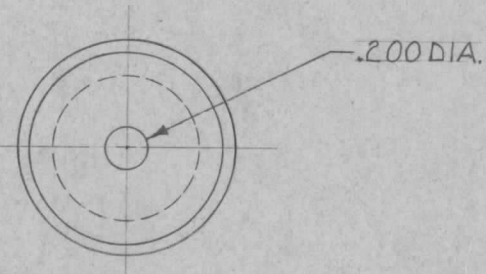
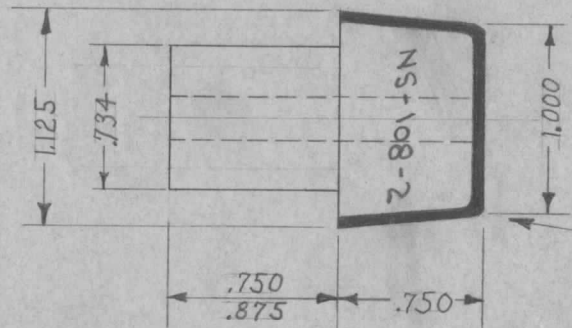
MAXIMUM ALLOWABLE TOLERANCES HAVE BEEN DETERMINED AND DEVIATIONS WILL BE CAUSE FOR REJECTION. REMOVE ALL BURRS AND SHARP EDGES

REQ. PER UNIT	USED ON			
	MODEL	PROJECT NO.	ASS'Y. NO.	DATE
6	TAC-1	132	AM117 A-700 A-701	1-21-54



NS-108-1

STAMP AS SHOWN



NS-108-2

STAMP AS SHOWN

GLAZE IS INDICATED BY HEAVY LINE.

REQ.	ITEM	PART NO.	DESCRIPTION	SYMBOL
			<b>THE TECHNICAL MATERIEL CORP.</b> MAMARONECK, NEW YORK	
		STOCK SIZE	INSULATOR, STEATITE, GLAZED	
		MATERIAL	ENT LEAD IN.	
		WEIGHT PER PC.		
		TYPE & TEMPER	F.M. 7/30/53	ARB
			DRAWN	ELEC. DES. APP. MECH. DES. APP.
			LAD 7-30-53	ARB
		HEAT TREAT. SPEC.	CHECKED	FINAL APPROVAL
		L4 WHITE GLAZE	Supersedes ENG 1-240	
		FINISH & SPEC. NO.	NS-108	

ISSUE	ITEM	CHANGED FROM	DATE	CN. NO.	DRAFTS	CHECKER	ENG. APP.

TOLERANCES

SCALE

DRILL, PUNCH, COMMERCIAL STOCK SIZES AND MANUFACTURERS TOLERANCES ARE NOT INCLUDED.

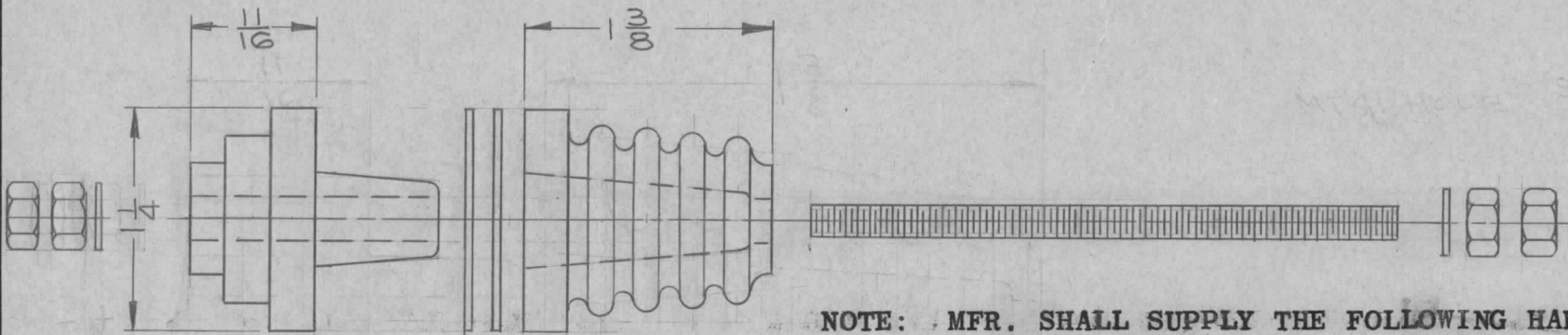
ALL OTHERS  
DEC. DIM. ±  
FRAC. DIM. ±  
ANGULAR DIM. ±

IF IT IS FOUND DESIRABLE TO CHANGE ANY TOLERANCE OR OTHER DETAIL SPECIFIED ON THIS DRAWING NOTIFY THE PURCHASER PROMPTLY.

NS-109 A

MAXIMUM ALLOWABLE TOLERANCES HAVE BEEN DETERMINED AND DEVIATIONS WILL BE CAUSE FOR REJECTION. REMOVE ALL BURRS AND SHARP EDGES

REQ PER UNIT		MODEL	PROJECT NO.	ASSY. NO.	DATE
2		DAC	130	A-623	12-9-53



**NOTE:** MFR. SHALL SUPPLY THE FOLLOWING HARDWARE ;  
 1 STUD - 10-32 X 3 1/4 LG., BRASS, NICKEL PLATED.  
 4 HX NUTS, BR, NICKEL  
 2 FLAT WASHERS, BR., NICKEL  
 2 CORK WASHERS

DIMENSIONS FOR REFERENCE ONLY

MOUNTING HOLE - 9/16 DIA

REQ.	ITEM	PART NO.	DESCRIPTION	SYMBOL
			THE TECHNICAL MATERIEL CORP. MAMARONECK, NEW YORK	
STOCK SIZE				
PORCELAIN			INSULATOR,	
MATERIAL			FEED-THRU	
WEIGHT PER PC.				
GRADE L2 OR BETTER				
TYPE & TEMPER				
HEAT TREAT. SPEC.				
FINISH & SPEC. NO.				
			DRAWN: <i>faild</i> CHECKED: <i>e.s.s.</i>	ELEC. DES. APP.: <i>AMB</i> MECH. DES. APP.: <i>WRE</i>
			FINAL APPROVAL	
			NS-109 A	

A	1	REVISED & REDRAWN	8-16-53	9946				
ISSUE	ITEM	CHANGED FROM	DATE	CN. NO.	DRAFTS	CHECKER	ENG. APP.	

TOLERANCES		SCALE	S-401-20
ALL OTHERS	DEC. DIM. ± FRAC. DIM. ± ANGULAR DIM. ±	DRILL, PUNCH, COMMERCIAL STOCK SIZES AND MANUFACTURERS TOLERANCES ARE NOT INCLUDED.	



IF IT IS FOUND DESIRABLE TO CHANGE ANY TOLERANCE OR OTHER DETAIL SPECIFIED ON THIS DRAWING NOTIFY THE PURCHASER PROMPTLY.

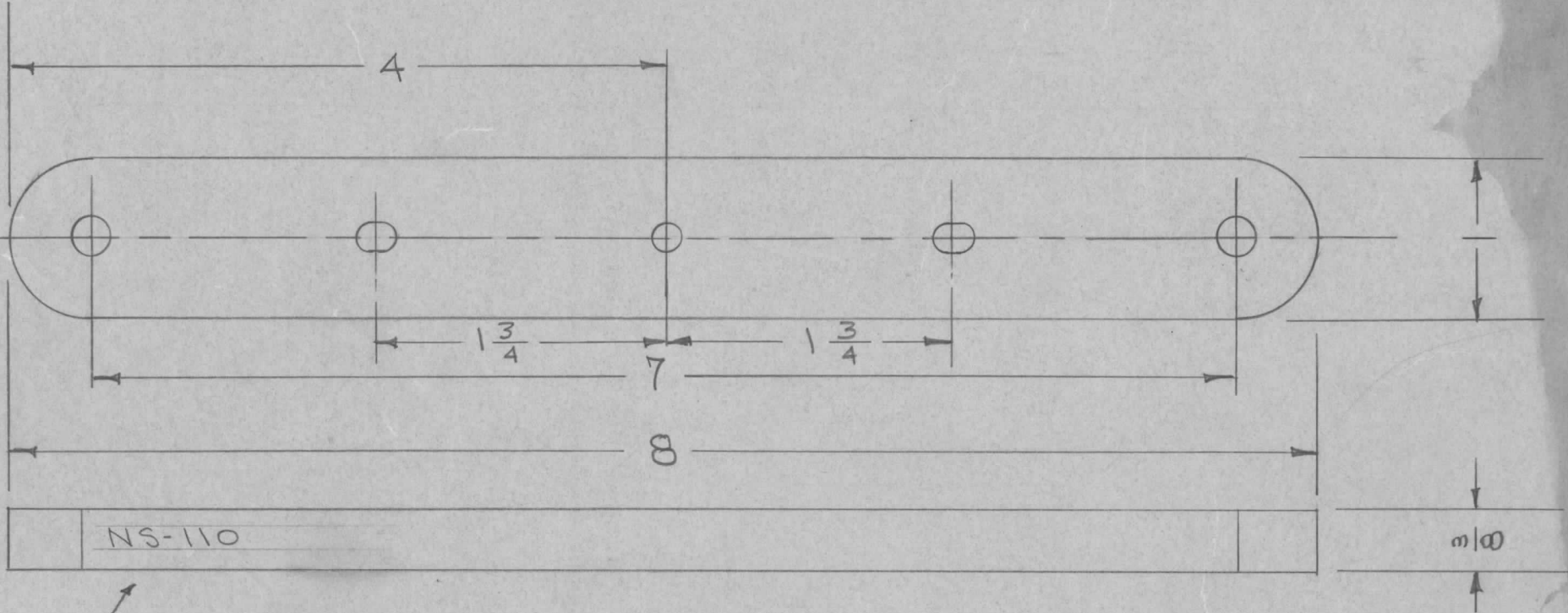
NS-110 A

MAXIMUM ALLOWABLE TOLERANCES HAVE BEEN DETERMINED AND DEVIATIONS WILL BE CAUSE FOR REJECTION. REMOVE ALL BURRS AND SHARP EDGES

PREP  
CZ  
4

USED ON

MODEL PROJECT NO. ASSY. NO. DATE



NS-110

STAMP AS SHOWN

REF: BARKER & WILLIAMSON CAT. NO. E14-1

REQ.	ITEM	PART NO.	DESCRIPTION	SYMBOL
			THE TECHNICAL MATERIEL CORP. MAMARONECK. NEW YORK	
		STOCK SIZE		
		STEATITE	INSULATOR, STEATITE, GLAZED.	
		MATERIAL	P/O CB-115	
		WEIGHT PER PC.		
			C.D.D. 12-14-53	
		TYPE & TEMPER	AMP	WDC
			DRAWN	ELEC. DES. APP. MECH. DES. APP.
		HEAT TREAT. SPEC.	JAS	AMP WDC
			CHECKED	FINAL APPROVAL
		FINISH & SPEC. NO.		NS-110 A

ISSUE	ITEM	CHANGED FROM	DATE	CN. NO.	DRAFTS	CHECKER	ENG. APP.
A	1	SLOT DIM. ADDED	4/19/57	1	16	JAS	AMP

TOLERANCES		SCALE
ALL OTHERS	DEC. DIM. ± FRAC. DIM. ± ANGULAR DIM. ±	

DRILL, PUNCH, COMMERCIAL STOCK SIZES AND MANUFACTURERS TOLERANCES ARE NOT INCLUDED.

IF IT IS FOUND DESIRABLE TO CHANGE ANY TOLERANCE OR OTHER DETAIL SPECIFIED ON THIS DRAWING NOTIFY THE PURCHASER PROMPTLY.

# STANDARD DRAWING

NS-111

MAXIMUM ALLOWABLE TOLERANCES HAVE BEEN DETERMINED AND DEVIATIONS WILL BE CAUSE FOR REJECTION. REMOVE ALL BURRS AND SHARP EDGES

USED ON

MODEL

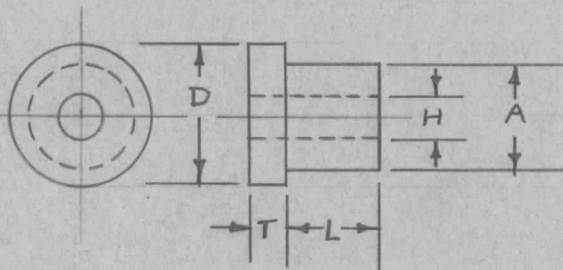
PROJECT NO.

ASS'Y. NO.

DATE

FOR PURCH., ADD LENGTH AFTER CAT.#

TMC NO.	CAT. NO.	"D"	"A"	"H"	HOLE SCREW SIZE	"T"		"L"
						FOR "L" LESS THAN 1/2	FOR "L" OVER 1/2	
NS-111-1	4A	.250	.187	.125	4	.046	.093	TO BE SPEC- IFIED FOR ALL TYPES
NS-111-2	4B	.312	.234	.125	4	.055	.101	
NS-111-3	6B	.312	.234	.150	6	.055	.101	
NS-111-4	6C	.375	.281	.150	6	.062	.109	
NS-111-5	8C	.375	.281	.175	8	.062	.109	
NS-111-6	8D	.500	.375	.175	8	.078	.125	
NS-111-7	8E	.625	.468	.175	8	.093	.140	
NS-111-8	10C	.375	.281	.200	10	.062	.109	
NS-111-9	10D	.500	.375	.200	10	.078	.125	
NS-111-10	10E	.625	.468	.200	10	.093	.140	
NS-111-11	10F	.750	.562	.200	10	.109	.156	
NS-111-12	10G	1.000	.750	.200	10	.140	.187	
NS-111-13	14E	.625	.468	.265	14	.093	.140	
NS-111-14	14F	.750	.562	.265	14	.109	.156	
NS-111-15	14G	1.000	.750	.265	14	.140	.187	



EXAMPLE: NS-111-1 - 5/16  
 DWG. NO.                      LENGTH  
 (TO BE IN SIXTEENTHS)

REF: ISOLANTITE INC.

REQ.	ITEM	PART NO.	DESCRIPTION	SYMBOL
		<i>ff</i>	THE TECHNICAL MATERIEL CORP. MAMARONECK, NEW YORK	
		STOCK SIZE		
		<i>ff</i> <i>ff</i>	INSULATOR, UNGLAZED (SHOULDER BUSHING)	
		MATERIAL    WEIGHT PER PC.		
		<i>ff</i>	16-1-14-59	
		TYPE & TEMPER	DRAWN	ELEC. DES. APP.
		<i>ff</i>	MECH. DES. APP.	
		HEAT TREAT. SPEC.	FINAL APPROVAL	
		<i>ff</i>	CHECKED	
		FINISH & SPEC. NO.	NS-111	

ISSUE	ITEM	CHANGED FROM	DATE	CN. NO.	DRAFTS	CHECKER	ENG. APP.
TOLERANCES			SCALE <i>ff</i>				
ALL OTHERS	DEC. DIM. ± FRAC. DIM. ± ANGULAR DIM. ±	DRILL, PUNCH, COMMERCIAL STOCK SIZES AND MANUFACTURERS TOLERANCES ARE NOT INCLUDED.					

IF IT IS FOUND DESIRABLE TO CHANGE ANY TOLERANCE OR OTHER DETAIL SPECIFIED ON THIS DRAWING NOTIFY THE PURCHASER PROMPTLY.

# STANDARD DRAWING

NS-112

A

MAXIMUM ALLOWABLE TOLERANCES HAVE BEEN DETERMINED AND DEVIATIONS WILL BE CAUSE FOR REJECTION. REMOVE ALL BURRS AND SHARP EDGES

REQ. PER UNIT

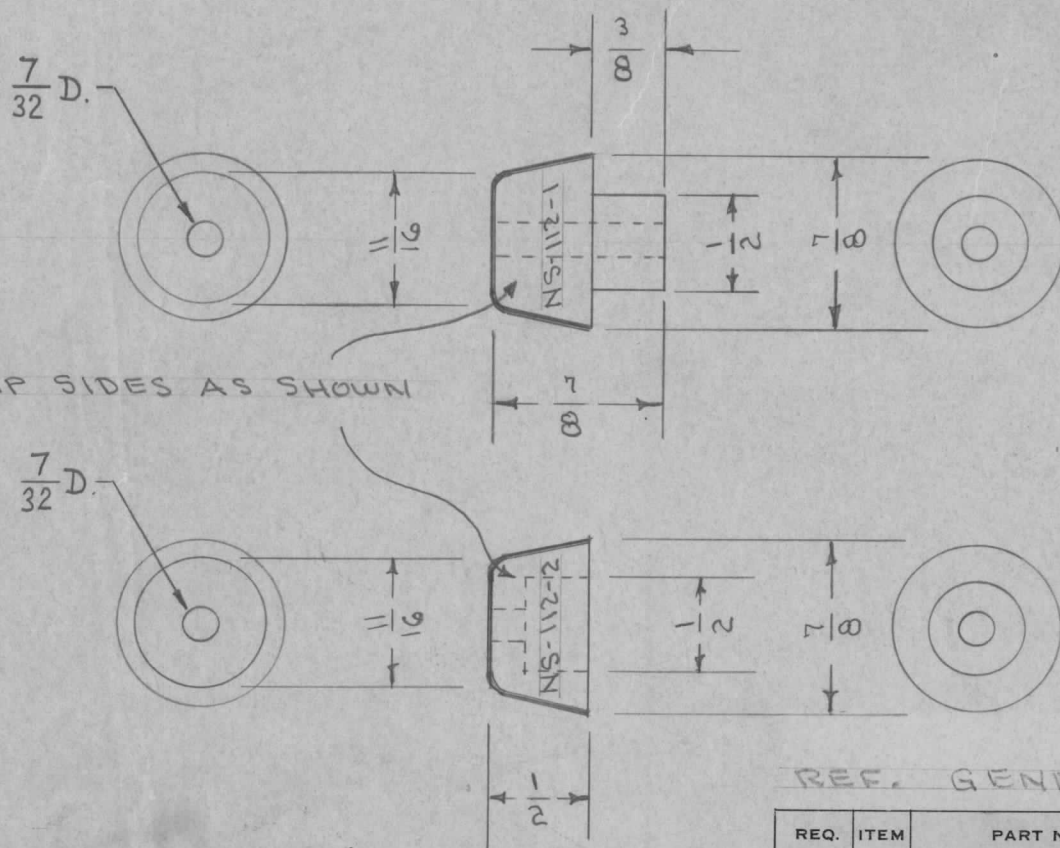
USED ON

MODEL

PROJECT NO.

ASS'Y. NO.

DATE



NS-112-1

CAT. NO. 1430-00

NS-112-2

CAT. NO. 1431-00

REF. GENERAL CERAMICS CO.

HEAVY LINE INDICATES GLAZE DIMENSIONS - FOR REF. ONLY.

REQ.	ITEM	PART NO.	DESCRIPTION	SYMBOL
			THE TECHNICAL MATERIEL CORP. MAMARONECK, NEW YORK	
		STOCK SIZE		
		CERAMIC	INSULATOR, FEED THRU	
		MATERIAL	WEIGHT PER PC.	
			TAC-1	
		TYPE & TEMPER	C.O.D.	ARB
			DRAWN	ELEC. DES. APP. MECH. DES. APP.
		HEAT TREAT. SPEC.	ARB	FINAL APPROVAL
		FINISH & SPEC. NO.	CHECKED	NS-112 A

A	1	7/32 DIA. DIM ADDED	522-61	4915	WAF.	JMS	ARB
ISSUE	ITEM	CHANGED FROM	DATE	CN. NO.	DRAFTS	CHECKER	ENG. APP.

TOLERANCES		SCALE	DRILL, PUNCH, COMMERCIAL STOCK SIZES AND MANUFACTURERS TOLERANCES ARE NOT INCLUDED.
ALL OTHERS	DEC. DIM. ± FRAC. DIM. ± ANGULAR DIM. ±		

IF IT IS FOUND DESIRABLE TO CHANGE ANY TOLERANCE OR OTHER DETAIL SPECIFIED ON THIS DRAWING NOTIFY THE PURCHASER PROMPTLY.

NS-113

MAXIMUM ALLOWABLE TOLERANCES HAVE BEEN DETERMINED AND DEVIATIONS WILL BE CAUSE FOR REJECTION. REMOVE ALL BURRS AND SHARP EDGES

REQ. PER UNIT

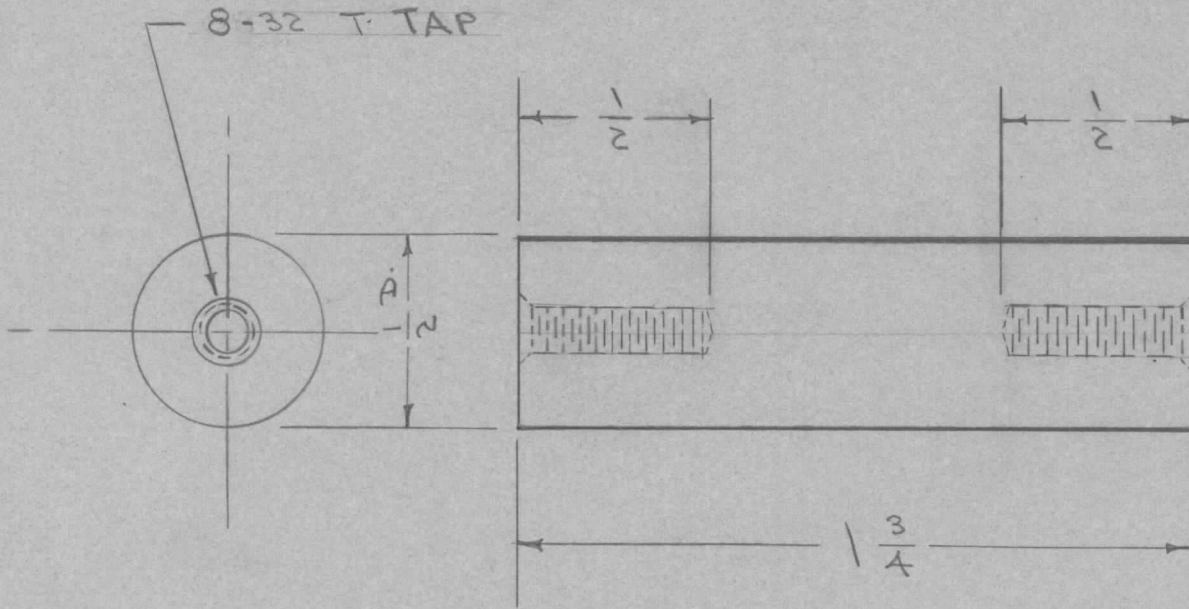
USED ON

MODEL

PROJECT NO.

ASS'Y. NO.

DATE



BREAK EDGE OF BEARING SURFACE

HEAVY LINE INDICATES GLAZE

INSULATOR TO BE IN ACC. WITH JAN I-8 & JAN I-10 AND AMEND. STYLE 02

REQ.	ITEM	PART NO.	DESCRIPTION	SYMBOL
			THE TECHNICAL MATERIEL CORP. MAMARONECK, NEW YORK	
		STOCK SIZE		
	STEATITE		INSULATOR	
		MATERIAL	PILLAR - ROUND	
		WEIGHT PER PC.		
		TYPE & TEMPER	COND. 5-4-54	
			DRAWN	ELEC. DES. APP. MECH. DES. APP.
		HEAT TREAT. SPEC.	CHECKED	FINAL APPROVAL
		FINISH & SPEC. NO.		NS-113

ISSUE ITEM CHANGED FROM DATE CN. NO. DRAFTS CHECKER ENG. APP.

TOLERANCES

SCALE

DRILL, PUNCH, COMMERCIAL STOCK SIZES AND MANUFACTURERS TOLERANCES ARE NOT INCLUDED.

ALL OTHERS

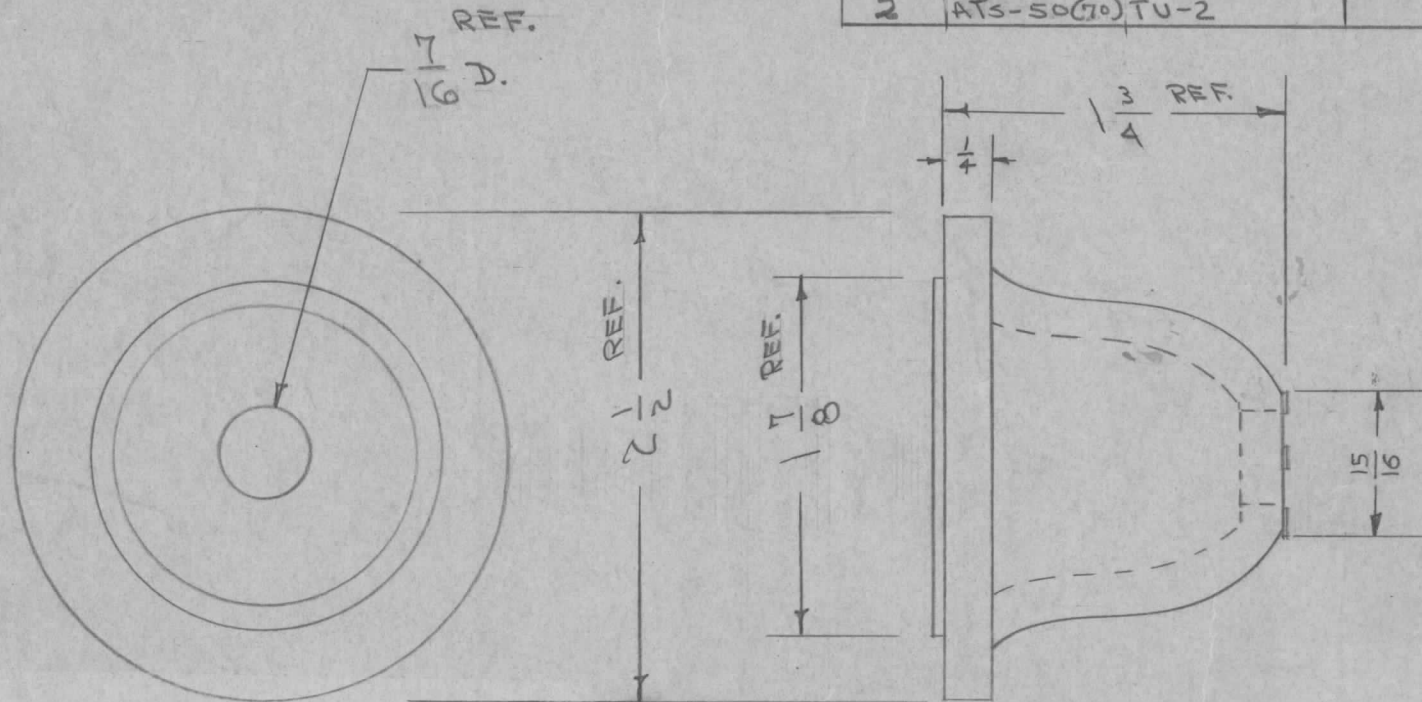
DEC. DIM. ±  
FRAC. DIM. ±  
ANGULAR DIM. ±

IF IT IS FOUND DESIRABLE TO CHANGE ANY TOLERANCE OR OTHER DETAIL SPECIFIED ON THIS DRAWING NOTIFY THE PURCHASER PROMPTLY.

NS-115 C

MAXIMUM ALLOWABLE TOLERANCES HAVE BEEN DETERMINED AND DEVIATIONS WILL BE CAUSE FOR REJECTION. REMOVE ALL BURRS AND SHARP EDGES

REQ PERD UNIT	USED ON			
	MODEL	PROJECT NO.	ASSY. NO.	DATE
2	CTAC			6-30-54
1	VRA-1	259	A-811	7-26-54
1	VRA-2, 2A	259	A-811	7-26-54
4	TRC 3500			1-19-56
2	ATS-50(70) TU-2			6-8-59



REF: ELECTRONIC MECHANICS CORP. MICROY EBI-250

REQ.	ITEM	PART NO.	DESCRIPTION	SYMBOL
			<b>THE TECHNICAL MATERIEL CORP.</b> MAMARONECK, NEW YORK	
		STOCK SIZE	CAP, INSULATING	
		MATERIAL	GLASS BONDED MICA	
		WEIGHT PER PC.		
		TYPE & TEMPER	MICROY 38A	
		HEAT TREAT. SPEC.		
		FINISH & SPEC. NO.		
ISSUE			C.D.D. 7-26-54	
CHANGED FROM			APP	WDC
DATE			APP	APP
CN. NO.			APP	APP
DRAFTS			APP	APP
CHECKER			APP	APP
ENG. APP.			APP	APP
TOLERANCES			NS-115 C	

ISSUE	ITEM	CHANGED FROM	DATE	CN. NO.	DRAFTS	CHECKER	ENG. APP.
C	2	REF: ELEC. MECH. CORP DELETED ON SCALE S401-217 (EBI-250) ADDED ON MATERIAL GLASS BONDED MICA ADDED- ON TYPE MICROY 38A ADDED	7/19/63	9539	G.D.V.	M.P.	APP
B	2	1/4 ADDED	2-11-57	2	SC.	W.C.	APP
B	1	15/16 ADDED					
A	1	7/16 WAS 1/2	8/26/54	1	C.D.D.	W.C.	APP

SCALE S401-217 (EBI-250)  
DRILL, PUNCH, COMMERCIAL STOCK SIZES AND MANUFACTURERS TOLERANCES ARE NOT INCLUDED.

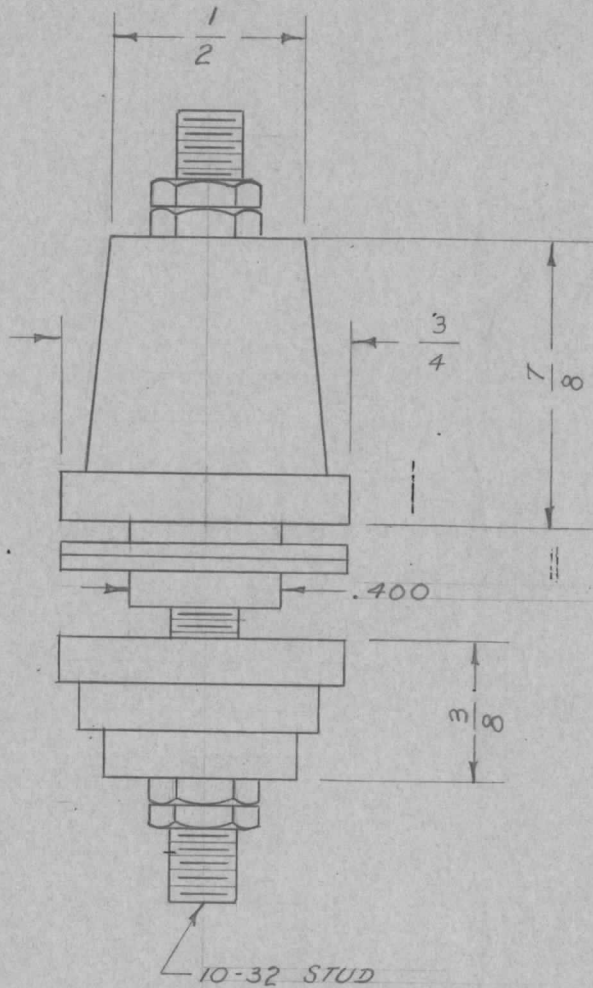
ALL OTHERS  
DEC. DIM. ±  
FRAC. DIM. ± 1/64  
ANGULAR DIM. ±

IF IT IS FOUND DESIRABLE TO CHANGE ANY TOLERANCE OR OTHER DETAIL SPECIFIED ON THIS DRAWING NOTIFY THE PURCHASER PROMPTLY.

NS-116  $\phi$

MAXIMUM ALLOWABLE TOLERANCES HAVE BEEN DETERMINED AND DEVIATIONS WILL BE CAUSE FOR REJECTION.  
REMOVE ALL BURRS AND SHARP EDGES

REQ. PER UNIT	USED ON			
	MODEL	PROJECT NO.	ASS'Y. NO.	DATE
1	TR-110		A-968	3-21-55



NOTE:  
NUTS, STUD & CUSHION  
WASHERS SUPPLIED BY MFG.

DIMENSIONS FOR REF. ONLY.

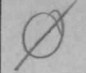
REF: E.F. JOHNSON CAT. # 135-42

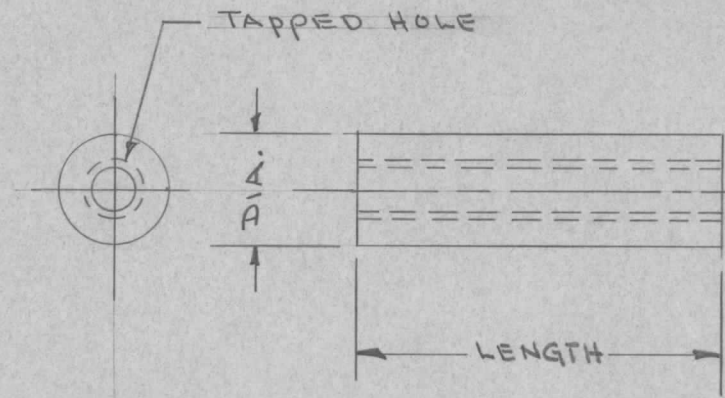
REQ.	ITEM	PART NO.	DESCRIPTION	SYMBOL
			<b>THE TECHNICAL MATERIEL CORP.</b>	
			MAMARONECK, NEW YORK	
			STEATITE	INSULATOR
			MATERIAL	WEIGHT PER PC.
			TYPE & TEMPER	P.B. 3-21-55 <i>JB</i>
			HEAT TREAT. SPEC.	<i>WDE</i>
			FINISH & SPEC. NO.	
				DRAWN <i>FAID</i> ELEC. DES. APP. MECH. DES. APP. <i>SPM 9/26/69</i>
				CHECKED FINAL APPROVAL
				NS-116 $\phi$

$\phi$	ORIGINAL RELEASE	9/26/69	$\odot$				
ISSUE	ITEM	CHANGED FROM	DATE	CN. NO.	DRAFTS	CHECKER	ENG. APP.
TOLERANCES			SCALE				
ALL OTHERS	DEC. DIM. $\pm$ FRAC. DIM. $\pm$ ANGULAR DIM. $\pm$		DRILL, PUNCH, COMMERCIAL STOCK SIZES AND MANUFACTURERS TOLERANCES ARE NOT INCLUDED.				

LENGTH	CENTRALAB CAT. NOS.				
	TAPPED FOR 6-32 THD.			10-32 THD.	¼-20 THD.
	¼ DIA.	3/8 DIA.	½ DIA.	¾ DIA.	1" DIA.
¼	X-63				
3/8	X-64	X-65			
½	X-8	X-48	X-12		
5/8		X-50			
¾	X-9	X-52	X-13	X-20	
1	X-10	X-54	X-14	X-21	X-28
1 ¼	X-11	X-56	X-15	X-22	X-29
1 ½		X-58	X-16	X-23	X-30
2		X-60	X-17	X-24	X-31
2 ¼		X-62			
2 ½			X-18	X-25	X-32
3			X-19	X-26	X-33
4				X-27	X-34
5					X-35

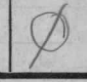
REQ. PER UNIT	USED ON		
	MODEL	ASS'Y. NO.	DATE
			10/14/55

NS-117 



NS-117-X62  
 TMC NO      CATALOG NO  
 (SEE CHART ABOVE)

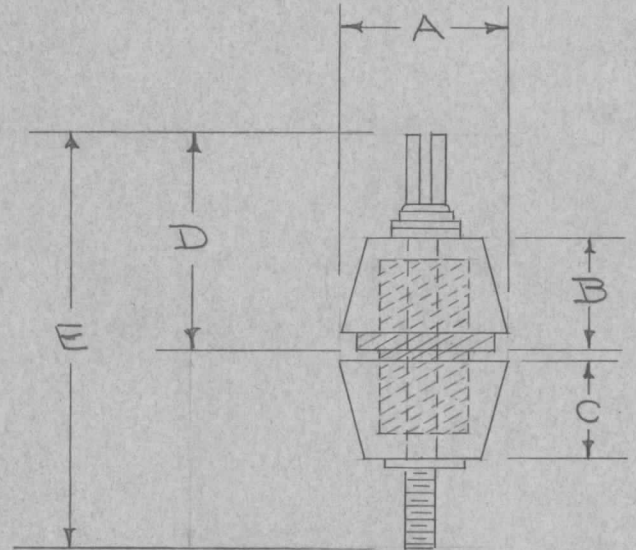
REF: CENTRALAB

REQ. ITEM	PART NO.	DESCRIPTION	SYMBOL
		THE TECHNICAL MATERIEL CORP. MAMARONECK, NEW YORK	
	STOCK SIZE	INSULATOR, STANDOFF	
	MATERIAL		
	STEATITE		
	GRADE L5		
ISSUE	ITEM	CHANGED FROM	DATE CH. NO. DRAFTS CHECKER ENG. APP.
Ø		ORIGINAL RELEASE	9/26/69 W
TOLERANCES		SCALE:	
DEC. DIM. ±		MAXIMUM ALLOWABLE TOLERANCES HAVE BEEN DETERMINED AND ANY DEVIATIONS WILL BE CAUSE FOR REJECTION.	
FRAC. DIM. ±		REMOVE ALL BURRS AND SHARP EDGES	
ANGULAR DIM. ±			
TYPE & TEMPER		HEAT TREAT. SPEC.	DRAWN
FINISH & SPEC. NO.		ELEC. DES. APP.	MECH. DES. APP.
			9/26/69
			NS-117 

# STANDARD DRAWING

REQ. PER UNIT	USED ON		
	MODEL	ASS'Y. NO.	DATE

TMC No.	CAT. NO.	A	B	C	D	E	STUD THD. BTM.	RMS VOLTS	AMPS	MTG. HOLE	PANEL THK-NESS	STYLE NO.	GLAND TYPE
NS-118-1	500 A	1/2	13/32	1/4	27/32	13/8	G-32	7000	20	17/64	.060	5	NEOPRENE
" -2	500 C	1/2	13/32	9/32	27/32	13/8	G-32	7000	20	17/64	.060	5	NEOPRENE
" -3	875 A	7/8	19/32	1/2	1	2 1/8	10-24	9000	45	1/2	.060	5	NEOPRENE
" -4	1125 A	1 1/8	7/8	3/4	1 1/4	2 1/16	10-24	12,000	45	3/4	.074	5	NEOPRENE
" -5	875 A W/O GLAND	7/8	19/32	1/2	1	2 1/8	10-24	12,000	45	1/2	.060		NONE
" -6	875 A MODIFIED	7/8	19/32	1/2	1	1 7/8	10-24	9000	45	1/2	.060	5	NEOPRENE



BUSHING - BRASS HOT TINNED  
 WASHER - NEOPRENE  
 INSULATORS - STEATITE  
 L3 OR BETTER  
 GLAND - SEE CHART

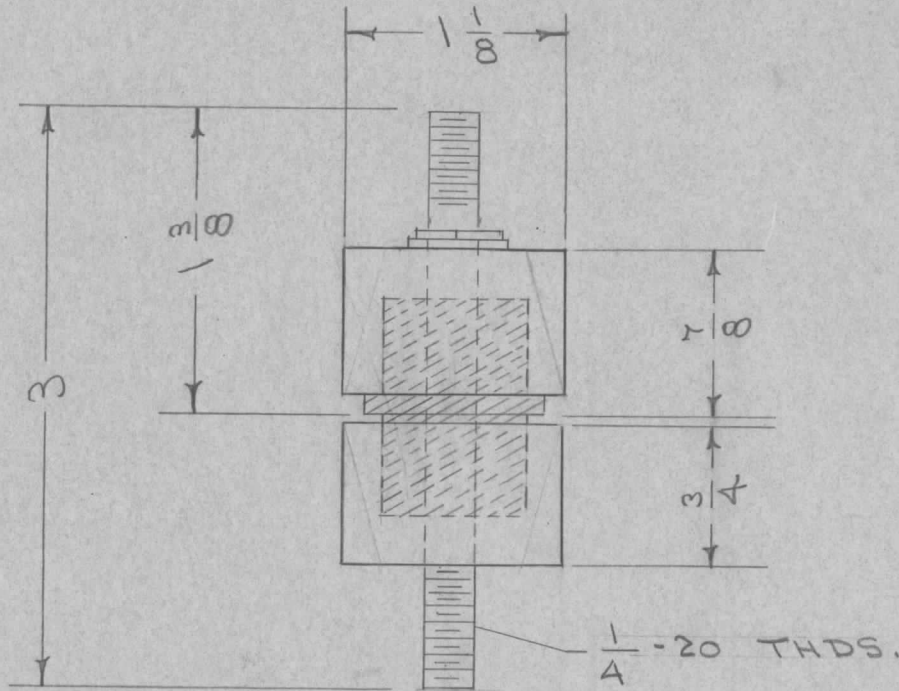
REF: HELDOR BUSHING & TERM. CO., INC.

D	1	NS-118-6 ADDED	2-11-63	8221	<i>[Signature]</i>	<i>[Signature]</i>	<i>[Signature]</i>	REQ. ITEM	PART NO.	DESCRIPTION	SYMBOL	
C		ADDED -5 CAT NO.	6-20-62	6783	R.V.	<i>[Signature]</i>	<i>[Signature]</i>	THE TECHNICAL MATERIEL CORP. MAMARONECK, NEW YORK  BUSHING FEED THRU				
B		-5 GLAND TYPE WAS TEFLON PX-287	8/26/59	1234	<i>[Signature]</i>	<i>[Signature]</i>	STOCK SIZE					
A	1	-5 (TEFLON) ADDED	5/4/59		<i>[Signature]</i>	<i>[Signature]</i>	MATERIAL					
ISSUE ITEM	CHANGED FROM	DATE	CH. NO.	DRAFTS	CHECKER	ENG. APP.						
TOLERANCES			SCALE:				TYPE & TEMPER		HEAT TREAT. SPEC.	DRAWN	CHECKED	FINAL APPROVAL
DEC. DIM. ±			MAXIMUM ALLOWABLE TOLERANCES HAVE BEEN DETERMINED AND ANY DEVIATIONS WILL BE CAUSE FOR REJECTION. REMOVE ALL BURRS AND SHARP EDGES				FINISH & SPEC. NO.		ELEC. DES. APP.	MECH. DES. APP.	NS-118	
FRAC. DIM. ±							D					
ANGULAR DIM. ±												



# STANDARD DRAWING

REQ. PER UNIT	USED ON		NS-119	C
	MODEL	ASS'Y. NO.		



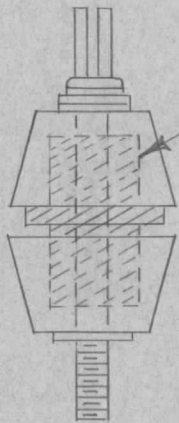
STUD - BRASS, HOT TINNED  
 WASHER - NEOPRENE  
 INSULATORS - STEATITE  
 L3 OR BETTER  
 GLAND - SEE CHART

TMC PART NO.	GLAND	MFG NO
NS119	NEOPRENE	1125-D
NS119-1	NONE	
NS119-2	TEFLON (PX-437)	

REF: HELDOR BUSHING & TERM. CO. # 1125-D

ISSUE	ITEM	CHANGED FROM	DATE	CH. NO.	DRAFTS	CHECKER	ENG. APP.	REQ. ITEM	PART NO.	DESCRIPTION	SYMBOL
C	1	DELETED - 2 (GLAND, TEFLON PX-437)	8/26/59	1235	amc	JCB	JCB			<b>THE TECHNICAL MATERIEL CORP.</b> MAMARONECK, NEW YORK <b>BUSHING</b> <b>FEED THRU</b>	C
B	1	Chart added	4/29/59	2	JCB	JCB	JCB				
A	1	CAT. NO. WAS 1125-B	9/18/57	1	sc	JCB	JCB				
TOLERANCES		SCALE:		TYPE & TEMPER		HEAT TREAT. SPEC.		DRAWN			
DEC. DIM. ±		MAXIMUM ALLOWABLE TOLERANCES HAVE BEEN DETERMINED AND ANY DEVIATIONS WILL BE CAUSE FOR REJECTION.		FINISH & SPEC. NO.		ELEC. DES. APP.		MECH. DES. APP.		FINAL APPROVAL	
FRAC. DIM. ±		REMOVE ALL BURRS AND SHARP EDGES								NS-119	
ANGULAR DIM. ±											

REQ. PER UNIT	USED ON			NS-120	A
	MODEL	ASS'Y. NO.	DATE		
2	TR-138		1-6-55		
2	TR-149		6-16-58		



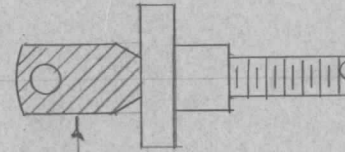
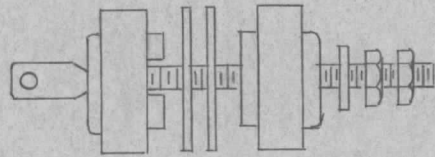
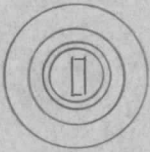
USE NS-118-3  
 REMOVE GLAND  
 REPLACE WITH PX-287

NO LONGER REQ.  
 USE NS-118-5 & PX-287

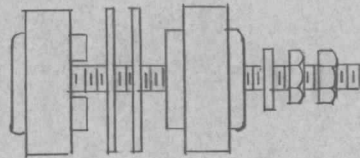
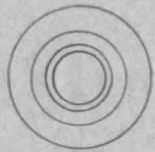
ISSUE	ITEM	CHANGED FROM	DATE	CH. NO.	DRAFTS	CHECKER	ENG. APP.	REQ. ITEM	PART NO.	DESCRIPTION	SYMBOL			
										THE TECHNICAL MATERIEL CORP. MAMARONECK, NEW YORK				
									STOCK SIZE		INSULATOR, MODIFIED			
A	1	NO LONGER REQ NOTE ADDED	6-27-61	5121	6-D.L	RU	SPM		NS-118-3	TRC-3500				
									MATERIAL					
TOLERANCES			SCALE:							000 1/16" JAW	AWC	ARB		
DEC. DIM. ± FRAC. DIM. ± ANGULAR DIM. ±			MAXIMUM ALLOWABLE TOLERANCES HAVE BEEN DETERMINED AND ANY DEVIATIONS WILL BE CAUSE FOR REJECTION. REMOVE ALL BURRS AND SHARP EDGES							TYPE & TEMPER	HEAT TREAT. SPEC.	DRAWN	CHECKED	FINAL APPROVAL
										FINISH & SPEC. NO.	ELEC. DES. APP.	MECH. DES. APP.	NS-120	A



REQ. PER UNIT	USED ON			NS-122
	MODEL	ASS'Y. NO.	DATE	
1	RTF		2-6-56	



REMOVE SCREW FROM FEED THRU (TOP SKETCH). CUT OFF SHADED AREA. SMOOTH END OF BUTTON. SILVER PLATE SCREW (.0003). REPLACE AS IN BOTTOM SKETCH.



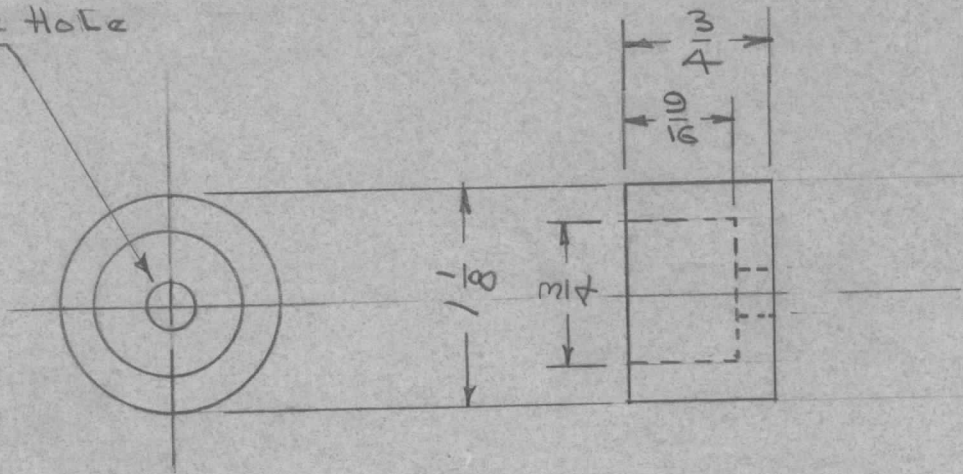
NOTE  
USED ONLY ON RTF SERIAL NOS 100-114 INCLUSIVE

								REQ. ITEM	PART NO.	DESCRIPTION	SYMBOL	
								NS-121		THE TECHNICAL MATERIEL CORP. MAMARONECK, NEW YORK		
								STOCK SIZE			INSULATOR, MODIFIED	
								MATERIAL			POW/AMP.	
ISSUE	ITEM	CHANGED FROM	DATE	CH. NO.	DRAFTS	CHECKER	ENG. APP.					
TOLERANCES			SCALE:									
DEC. DIM. $\pm$			MAXIMUM ALLOWABLE TOLERANCES HAVE BEEN DETERMINED AND ANY DEVIATIONS WILL BE CAUSE FOR REJECTION. REMOVE ALL BURRS AND SHARP EDGES									
FRAC. DIM. $\pm$												
ANGULAR DIM. $\pm$												
								TYPE & TEMPER	HEAT TREAT. SPEC.	DRAWN	CHECKED	FINAL APPROVAL
								SEE ABOVE				
								FINISH & SPEC. NO.	ELEC. DES. APP.	MECH. DES. APP.		
												NS-122



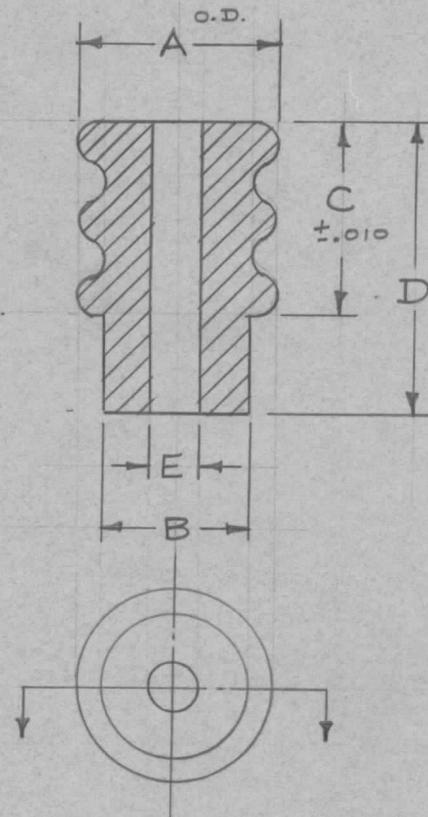
REQ. PER UNIT	USED ON			NS-126
	MODEL	ASS'Y. NO.	DATE	
8	GPT-10,000		1-26-59	
26	GPT-10,000	HVTR	1-26-59	

Clearance Hole  
FOR 1/4-20



REQ.	ITEM	PART NO.	DESCRIPTION				SYMBOL
			THE TECHNICAL MATERIEL CORP. MAMARONECK, NEW YORK				
			STOCK SIZE				
			STEATITE				STEATITE INSULATOR
			MATERIAL				
ISSUE	ITEM	CHANGED FROM	DATE	CH. NO.	DRAFTS	CHECKER	ENG. APP.
TOLERANCES			SCALE:				
DEC. DIM. ±			MAXIMUM ALLOWABLE TOLERANCES HAVE BEEN DETERMINED AND ANY DEVIATIONS WILL BE CAUSE FOR REJECTION:				
FRAC. DIM. ± 1/64			REMOVE ALL BURRS AND SHARP EDGES				
ANGULAR DIM. ±							
L3		HEAT TREAT. SPEC.		DRAWN		CHECKED	
GLAZED		FINISH & SPEC. NO.		ELEC. DES. APP		MECH. DES. APP	
				NS-126			

TMC PART NO.	BREAK DOWN VOLTAGE	DIMENSION (inches)					REQ. PER UNIT	USED ON			NS-127	A
		A	B	C	D	E		MODEL	ASSY. NO.	DATE		
NS-127-1	18K	1.25	.718	1.000	1.569	.265						
NS-127-2	30K	1.88	1.25	1.000	1.569	.265						



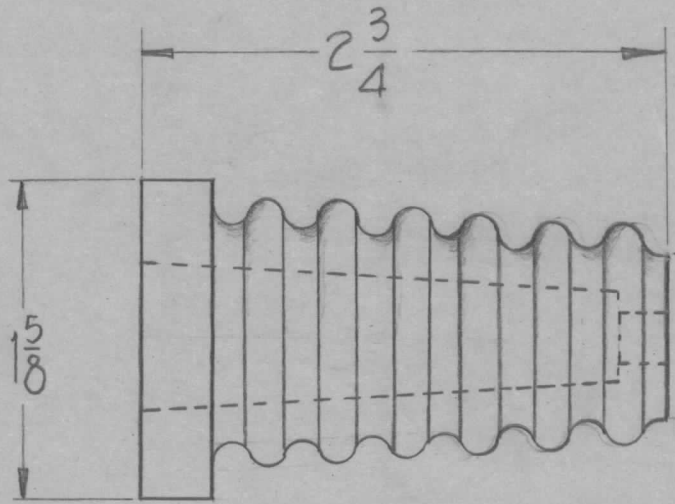
Note - Mates with NS-128

REQ.	ITEM	PART NO.	DESCRIPTION				SYMBOL
			THE TECHNICAL MATERIEL CORP. MAMARONECK, NEW YORK				
			BUSHING, INSULATED, MALE				
A	1	NS-127-1 "A" DIM. WAS 1.00	8/12/59	1	16	<i>JHE</i>	<i>AMS</i>
ISSUE	ITEM	CHANGED FROM	DATE	CH. NO.	DRAFTS	CHECKER	ENG. APP.
TOLERANCES			SCALE: S-401-69				
DEC. DIM. ± FRAC. DIM. ± ANGULAR DIM. ±			MAXIMUM ALLOWABLE TOLERANCES HAVE BEEN DETERMINED AND ANY DEVIATIONS WILL BE CAUSE FOR REJECTION. REMOVE ALL BURRS AND SHARP EDGES				
TYPE & TEMPER		HEAT TREAT. SPEC.	DRAWN	CHECKED	FINAL APPROVAL		
GLAZED			<i>GG</i>	<i>JHE</i>	NS-127		
FINISH & SPEC. NO.		ELEC. DES. APP	MECH. DES. APP	A			





REQ. PER UNIT	USED ON			NS-129
	MODEL	ASS'Y. NO.	DATE	
12	GPT-40K	AX-228	6-15-60	

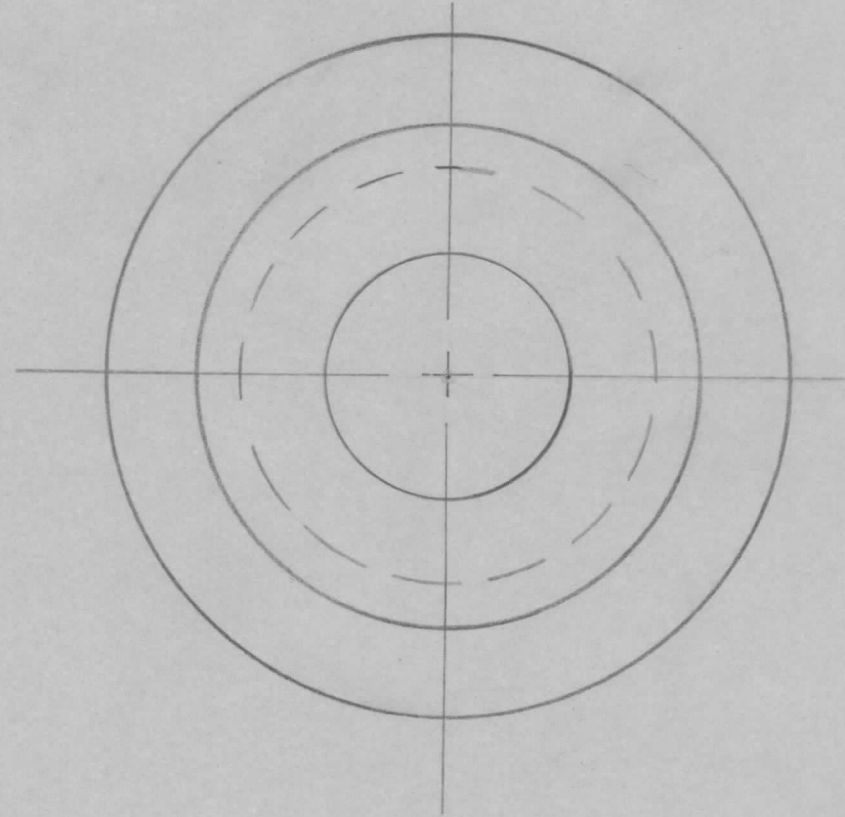
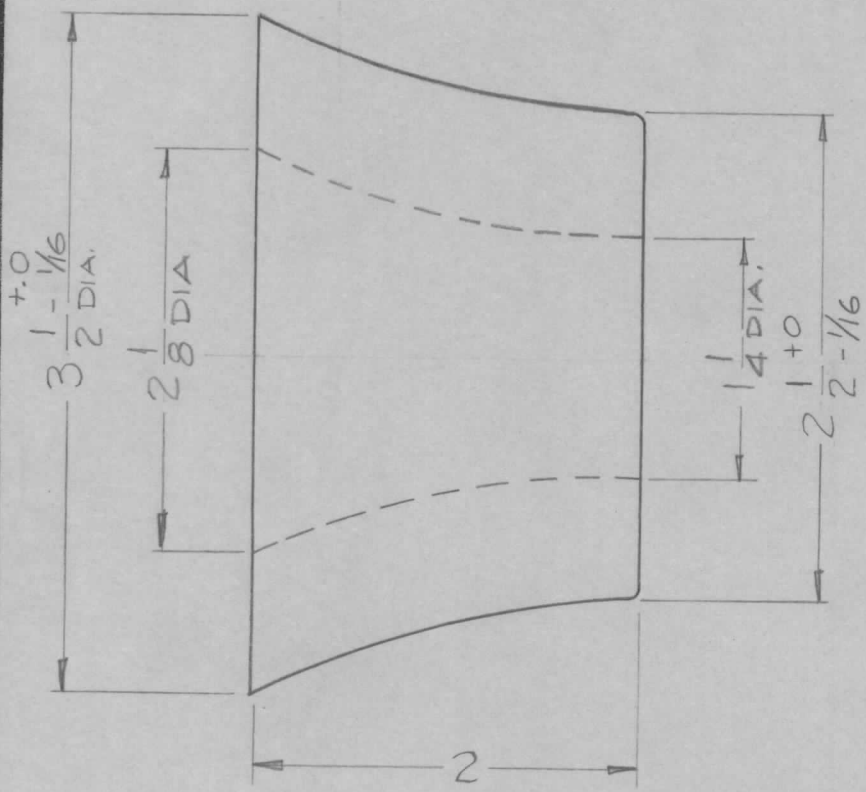


REF: BIRNBACH # 4276 (FEMALE)

								REQ.	ITEM	PART NO.	DESCRIPTION		SYMBOL			
										THE TECHNICAL MATERIEL CORP.						
										MAMARONECK, NEW YORK						
										INSULATOR FEEDTHRU						
										FEMALE						
ISSUE	ITEM	CHANGED FROM	DATE	CH. NO.	DRAFTS	CHECKER	ENG. APP.	MATERIAL								
TOLERANCES			SCALE:					TYPE & TEMPER		HEAT TREAT. SPEC.		DRAWN	CHECKED	FINAL APPROVAL		
DEC. DIM. ±			MAXIMUM ALLOWABLE TOLERANCES HAVE BEEN DETERMINED AND ANY DEVIATIONS WILL BE CAUSE FOR REJECTION. REMOVE ALL BURRS AND SHARP EDGES											NS-129		
FRAC. DIM. ±								FINISH & SPEC. NO.		ELEC. DES. APP		MECH. DES. APP				
ANGULAR DIM. ±																

REQ. PER. UNIT	USED ON		
	MODEL	ABB'Y. NO.	DATE
1	VRA-5		9-8-61
1	VRA-6		9-8-61

NS-131



REQ.	ITEM	PART NO.	DESCRIPTION		SYMBOL						
			THE TECHNICAL MATERIEL CORP.								
			MAMARONECK, NEW YORK								
			INSULATOR, PORCELAIN								
			MATERIAL								
			STOCK SIZE								
			PORCELIN								
			MATERIAL								
ISSUE	ITEM	CHANGED FROM	DATE	CH. NO.	DRAFTS	CHECKER	ENG. APP.				
TOLERANCES			SCALE: S-401-135 (RA-938)								
DEC. DIM. ±			MAXIMUM ALLOWABLE TOLERANCES HAVE BEEN DETERMINED AND ANY DEVIATIONS WILL BE CAUSE FOR REJECTION. REMOVE ALL BURRS AND SHARP EDGES								
FRAC. DIM. ±											
ANGULAR DIM. ±											
TYPE & TEMPER		HEAT TREAT. SPEC.		DRAWN		CHECKED		FINAL APPROVAL			
CHOCOLATE GLAZE				D.J. Ryan		AB		JAM			
FINISH & SPEC. NO.		ELEC. DES. APP		MECH. DES. APP		NS-131					

# STANDARD DRAWING

THE CONTENTS OF THIS DRAWING ARE THE EXCLUSIVE PROPERTY OF THE TECHNICAL MATERIEL CORP. ITS UNAUTHORIZED USE OR REPRODUCTION IN WHOLE OR IN PART IS STRICTLY FORBIDDEN.

REQ. PER UNIT

USED ON

MODEL

ASS'Y. NO.

DATE

7-26-62

NS-134

TMC PART NUMBER	CATALOG NO	FINISH	FIG NO	A	B	C	D	E	F
NS-134-1	637-B-UG	UNGLAZED	1	1/4	3/8	X	.150	.150	.240

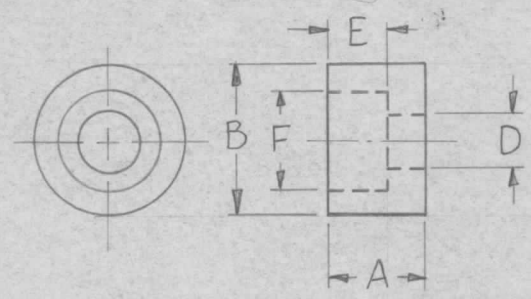
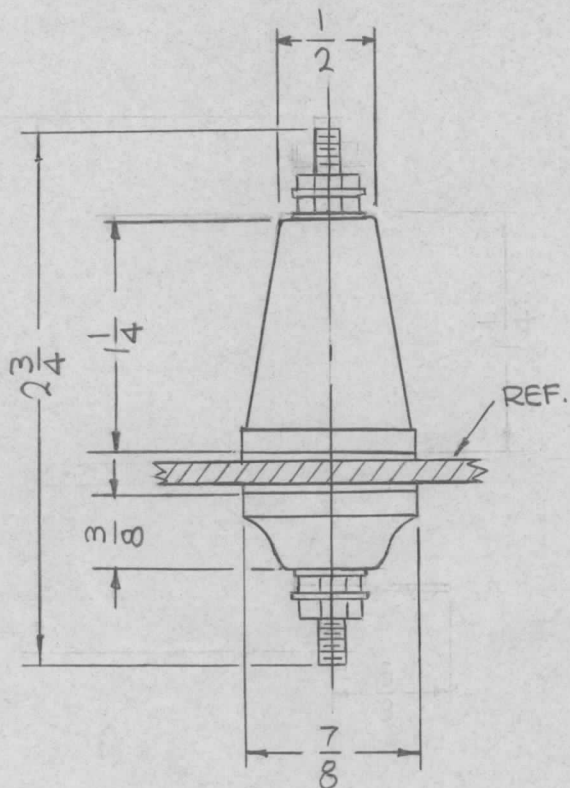


FIG 1

REQ.	ITEM	PART NO.	FAIOLA		DESCRIPTION	SYMBOL
					THE TECHNICAL MATERIEL CORP.	
			STOCK SIZE		MAMARONECK, NEW YORK	
			STEATITE		INSULATOR, BUSHING	
			MATERIAL			
SYM	DESCRIPTION	DATE	CH. NO.	DRAFTS	CHECKER	ENG. APP.
	UNLESS OTHERWISE SPECIFIED: DIMENSIONS ARE IN INCHES TOLERANCES ON FRAC. ± 1/64 DEC. ± .005 ANGLES ± 1/2°		SCALE: 5-401-143			
			MAXIMUM ALLOWABLE TOLERANCES HAVE BEEN DETERMINED AND ANY DEVIATIONS WILL BE CAUSE FOR REJECTION. REMOVE ALL BURRS AND SHARP EDGES		TYPE & TEMPER	HEATTREAT. SPEC.
					DRAWN	CHECKED
					FINISH & SPEC. NO.	ELEC. DES. APP.
						MECH. DES. APP.
						NS-134



REQ. PER UNIT	USED ON		NS137 $\emptyset$
	MODEL	ASS'Y. NO.	
2	VCCA-1		11-10-65



HARDWARE TO BE SUPPLIED BY MFG.

- 1 10-24 ROD
  - 4 NUTS
  - 2 LOCK WASHERS
  - 2 CORK WASHERS
  - 4 NUTS
  - 1 SOLDER LOL
- BRASS, NICKEL PLATED

REQ.	ITEM	PART NO.	F. BUDETTI DESCRIPTION			SYMBOL
			<b>THE TECHNICAL MATERIEL CORP.</b>			
			MAMARONECK, NEW YORK			
			STOCK SIZE			
$\emptyset$	ORIGINAL RELEASE	11-19-65	$\emptyset$			INSULATOR, FEEDTHRU, CERAMIC
X1	DRAWING WAS NS 137-1	11-18-65	X1			
SYM	DESCRIPTION	DATE	CH. NO.	DRAFTS	CHECKER	ENG. APP.
UNLESS OTHERWISE SPECIFIED DIMENSIONS ARE IN INCHES AND INCLUDE CHEMICALLY APPLIED OR PLATED FINISHES		SCALE	1:1			
DECIMALS .X $\pm$ .05 .XX $\pm$ .01 .XXX $\pm$ .005	TOLERANCES	FRACTIONS $\pm$ 1/64 ANGLES $\pm$ 0° 30'	CODE C	S401-20 (#4125)		
				TYPE & TEMPER	HEAT TREAT. SPEC.	DRAWN
						CHECKED
						FINAL APPROVAL
						NS137 $\emptyset$
				FINISH & SPEC. NO.	ELEC. DES. APP.	MECH. DES. APP.

M/1 J. D.

REVISIONS

APPLICATION

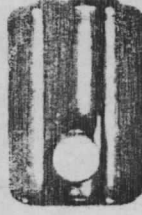
QTY	MODEL USED ON	ASS'Y NO.	LTR	DESCRIPTION	DATE	E.M.N.NO	DRAFT	CHKD	APPD
	STANDARD		Ø	ORIGINAL RELEASE	5-881	~	Ø		

JB TYPE STRAIN INSULATORS

TMC P/N	CATALOG NO (06)	ASA CLASS	LOW FREQUENCY FLASHOVER - DRY	KY WET	LEAKAGE DISTANCE IN	UTIMATE STRENGTH LBS	OUTSIDE DIA IN.	OA LGTH IN.
NS148-1	31502	54-1	25	12	1 5/8	10,000	2 1/2	3 1/2
NS148-2	31504	54-2	30	15	1 7/8	12,000	2 7/8	4 1/2
NS148-3	31506	54-3	35	18	2 1/4	20,000	3 3/8	5 1/2

MULTI-FIN TYPE STRAIN INSULATORS

NS148-4	31350	—	30	17	2 1/8	10,000	2 5/8	3 1/2
NS148-5	31351	—	35	20	2 3/4	12,000	3 1/4	5 1/2
NS148-6	31352	54-4	40	23	3	20,000	3 1/2	6 3/4



No. 31502



No. 31506

5401-83

REQ'D	ITEM	PART NUMBER	DESCRIPTION	SYM.
LIST OF MATERIAL				
<p><b>THE TECHNICAL MATERIEL CORP.</b> MAMARONECK, NEW YORK</p> <p>JB TYPE STRAIN INSULATORS MULTI-FIN TYPE STRAIN INSULATORS</p>				

FINAL APPROVAL	DATE
MECH. DES. E.M.	DATE
ELECT. DES.	DATE
CHECKED	DATE
DRAWN	DATE 5-18

SIZE	CODE IDENT. NO.	DWG NO.	ISSUE
A	82679	NS148	Ø

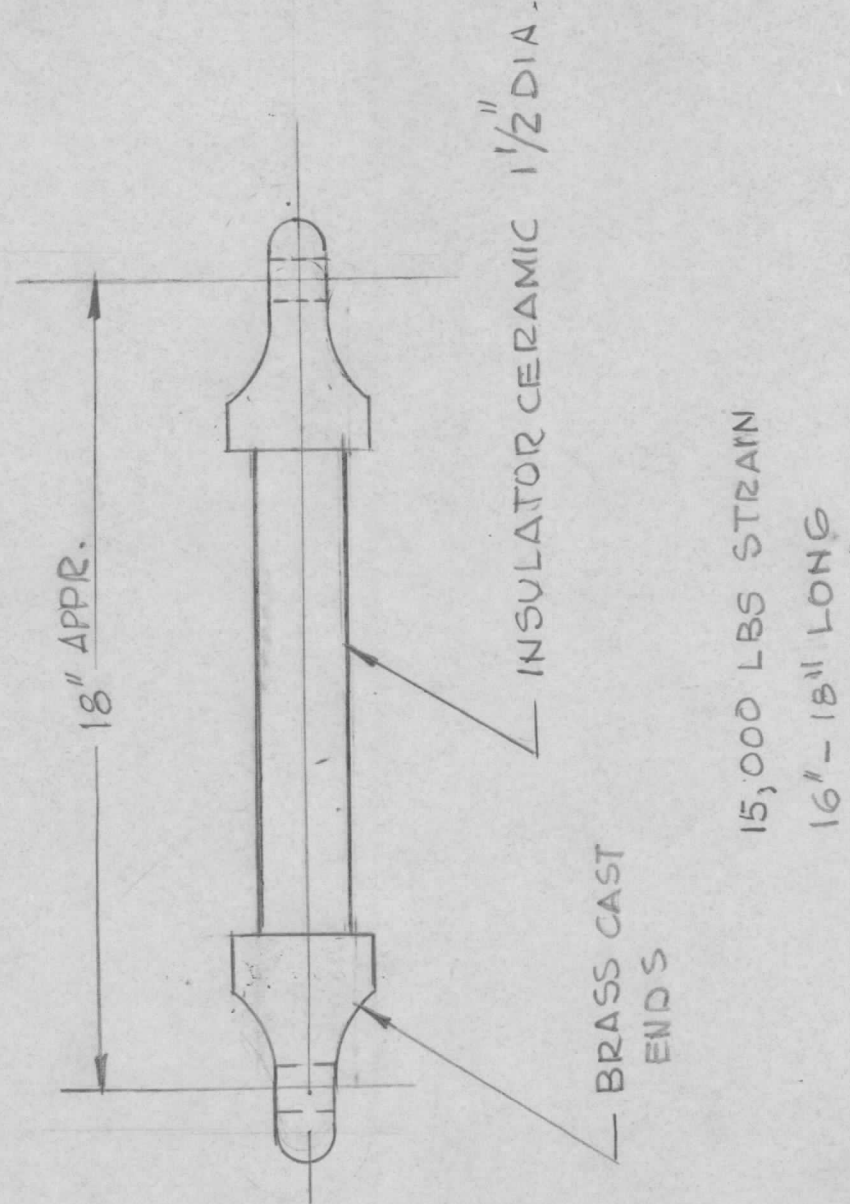
SCALE	SHEET	OF

NOTICE TO PERSONS RECEIVING THIS DRAWING  
 THE TECHNICAL MATERIEL CORPORATION claims proprietary right in the material disclosed hereon. This drawing is issued in confidence for engineering information only and may not be reproduced or used to manufacture anything shown hereon without permission from THE TECHNICAL MATERIEL CORPORATION to the user. This drawing is loaned for mutual assistance and is subject to recall at any time.

REVISIONS

APPLICATION

QTY	MODEL USED ON	ASSY NO.	LTR	DESCRIPTION	DATE	E.M.N.NO	DRAFT	CHKD	APPD
-	STANDARD		0	ORIGINAL RELEASE	10/24/69		GD.4		



BRASS CAST ENDS

INSULATOR CERAMIC 1 1/2 DIA.

15,000 LBS STRAIN  
16" - 18" LONG

UNLESS OTHERWISE SPECIFIED DIMENSIONS ARE IN INCHES AND INCLUDE CHEMICALLY APPLIED OR PLATED FINISHES DECIMALS .X ± .05 .XX ± .01 .XXX ± .005 FRACTIONS 1/64 ANGLES 0° - 30°	REQ'D	ITEM	PART NUMBER	DESCRIPTION	SYM.
	LIST OF MATERIAL				
MATERIAL	FINAL APPROVAL	DATE	THE TECHNICAL MATERIEL CORP. MAMARONECK, NEW YORK		
FINISH	MECH. DES.	DATE	INSULATOR STRAIN (PART OF KIT 4.64)		
	ELECT. DES.	DATE	SIZE	CODE IDENT. NO.	DWG NO.
	CHECKED	DATE	A	82679	NIS 151
	DRAWN	DATE	SCALE		SHEET
		10-12-89			OF
<p>NOTICE TO PERSONS RECEIVING THIS DRAWING</p> <p>THE TECHNICAL MATERIEL CORPORATION claims proprietary right in the material disclosed hereon. This drawing is issued in confidence for engineering information only and may not be reproduced or used to manufacture anything shown hereon without permission from THE TECHNICAL MATERIEL CORPORATION to the user. This drawing is loaned for mutual assistance and is subject to recall at any time.</p>					
ISSUE			Ø		