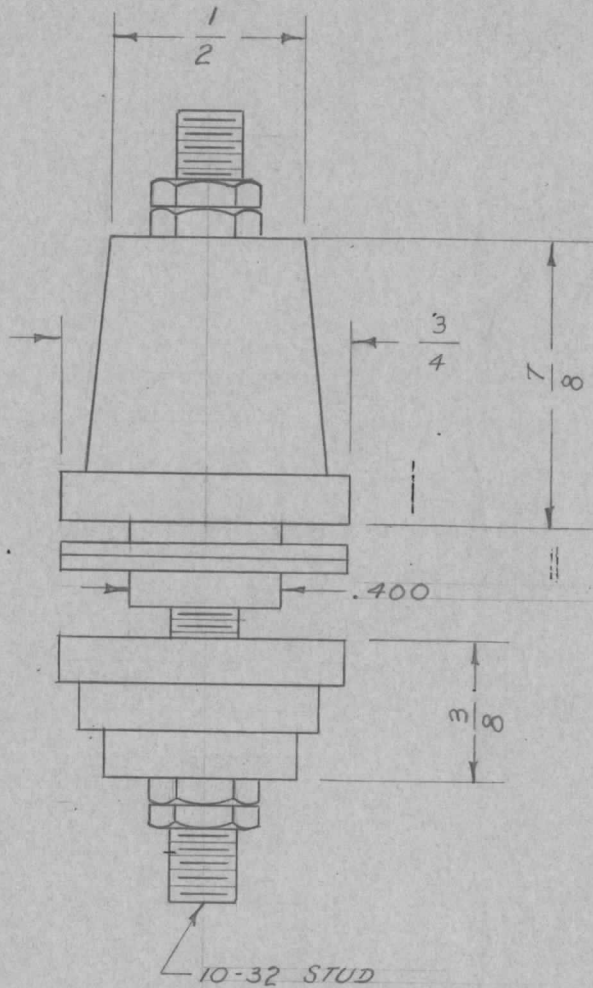


IF IT IS FOUND DESIRABLE TO CHANGE ANY TOLERANCE OR OTHER DETAIL SPECIFIED ON THIS DRAWING NOTIFY THE PURCHASER PROMPTLY.

NS-116  $\phi$

MAXIMUM ALLOWABLE TOLERANCES HAVE BEEN DETERMINED AND DEVIATIONS WILL BE CAUSE FOR REJECTION.  
REMOVE ALL BURRS AND SHARP EDGES

REQ. PER UNIT	USED ON			
	MODEL	PROJECT NO.	ASS'Y. NO.	DATE
1	TR-110		A-968	3-21-55



NOTE:  
NUTS, STUD & CUSHION  
WASHERS SUPPLIED BY MFG.

DIMENSIONS FOR REF. ONLY.

REF: E.F. JOHNSON CAT. # 135-42

REQ.	ITEM	PART NO.	DESCRIPTION	SYMBOL
			<b>THE TECHNICAL MATERIEL CORP.</b>	
			MAMARONECK, NEW YORK	
			STEATITE	INSULATOR
			MATERIAL	WEIGHT PER PC.
			TYPE & TEMPER	P.B. 3-21-55 <i>JB</i>
			HEAT TREAT. SPEC.	<i>WDE</i>
			FINISH & SPEC. NO.	

$\phi$	ORIGINAL RELEASE	9/26/69	$\odot$				
ISSUE	ITEM	CHANGED FROM	DATE	CN. NO.	DRAFTS	CHECKER	ENG. APP.
TOLERANCES			SCALE				
ALL OTHERS	DEC. DIM. $\pm$ FRAC. DIM. $\pm$ ANGULAR DIM. $\pm$		DRILL, PUNCH, COMMERCIAL STOCK SIZES AND MANUFACTURERS TOLERANCES ARE NOT INCLUDED.				

DRAWN: *FADE*  
 ELEC. DES. APP.: *JB*  
 MECH. DES. APP.: *WDE*  
 CHECKED: *FADE*  
 FINAL APPROVAL: *SPM 9/26/69*  
 NS-116  $\phi$