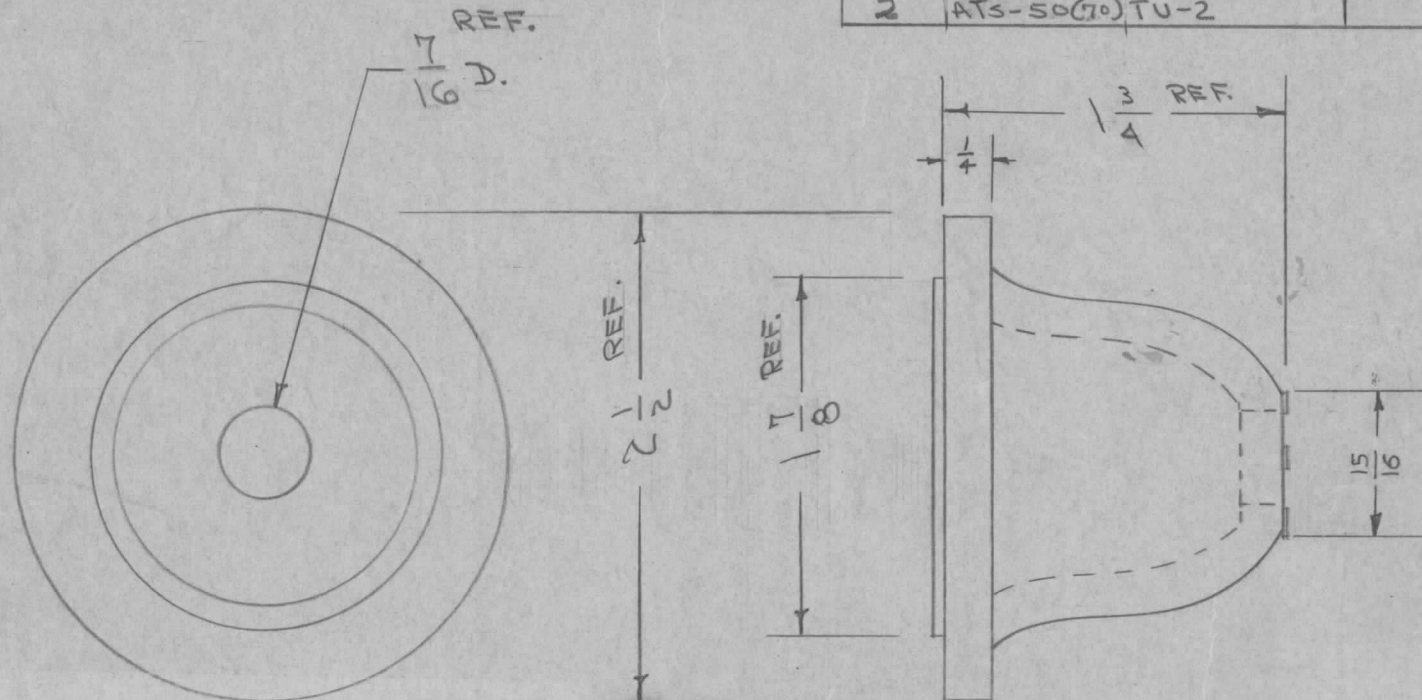


IF IT IS FOUND DESIRABLE TO CHANGE ANY TOLERANCE OR OTHER DETAIL SPECIFIED ON THIS DRAWING NOTIFY THE PURCHASER PROMPTLY.

NS-115 C

MAXIMUM ALLOWABLE TOLERANCES HAVE BEEN DETERMINED AND DEVIATIONS WILL BE CAUSE FOR REJECTION. REMOVE ALL BURRS AND SHARP EDGES

REF. PER UNIT	USED ON			
	MODEL	PROJECT NO.	ASSY. NO.	DATE
2	CTAC			6-30-54
1	VRA-1	259	A-811	7-26-54
1	VRA-2, 2A	259	A-811	7-26-54
4	TRC 3500			1-19-56
2	ATS-50(70) TU-2			6-8-59



REF. ELEC. MECH. CORP. MICROY EBI-250

REQ.	ITEM	PART NO.	DESCRIPTION	SYMBOL
			THE TECHNICAL MATERIEL CORP. MAMARONECK, NEW YORK	
		STOCK SIZE	CAP, INSULATING	
		MATERIAL	GLASS BONDED MICA	
		WEIGHT PER PC.		
		TYPE & TEMPER	MICROY 38A	
		HEAT TREAT. SPEC.		
		FINISH & SPEC. NO.		
ISSUE			C.D.D. 7-26-54	
CHANGED FROM			APP	WDC
DATE			ELEC. DES. APP.	MECH. DES. APP.
CN. NO.			APP	APP
DRAFTS			FINAL APPROVAL	
CHECKER			NS-115 C	
ENG. APP.				

ISSUE	ITEM	CHANGED FROM	DATE	CN. NO.	DRAFTS	CHECKER	ENG. APP.
C	2	REF: ELEC. MECH. CORP DELETED ON SCALE S401-217 (EBI-250) ADDED ON MATERIAL GLASS BONDED MICA ADDED- ON TYPE MICROY 38A ADDED	7/19/63	9539	G.D.V.	M.P.	APP
B	2	1/4 ADDED	2-11-57	2	SC.	hb	APP
	1	15/16 ADDED					
A	1	7/16 WAS 1/2	8/26/54	1	C.D.D.	FALE	WDC

TOLERANCES SCALE S401-217 (EBI-250)
 ALL OTHERS DEC. DIM. ±
 FRAC. DIM. ± 1/64
 ANGULAR DIM. ±
 DRILL, PUNCH, COMMERCIAL STOCK SIZES AND MANUFACTURERS TOLERANCES ARE NOT INCLUDED.