

IF IT IS FOUND DESIRABLE TO CHANGE ANY TOLERANCE OR OTHER DETAIL SPECIFIED ON THIS DRAWING NOTIFY THE PURCHASER PROMPTLY.

STANDARD DRAWING

NS-111

MAXIMUM ALLOWABLE TOLERANCES HAVE BEEN DETERMINED AND DEVIATIONS WILL BE CAUSE FOR REJECTION. REMOVE ALL BURRS AND SHARP EDGES

USED ON

MODEL

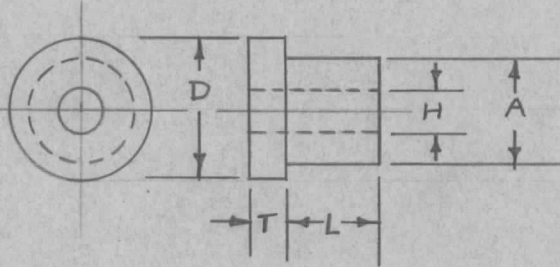
PROJECT NO.

ASS'Y. NO.

DATE

FOR PURCH., ADD LENGTH AFTER CAT.#

| TMC NO. | CAT. NO. | "D" | "A" | "H" | HOLE SCREW SIZE | "T" | | "L" |
|-----------|----------|-------|------|------|-----------------|-----------------------|------------------|---|
| | | | | | | FOR "L" LESS THAN 1/2 | FOR "L" OVER 1/2 | |
| NS-111-1 | 4A | .250 | .187 | .125 | 4 | .046 | .093 | TO BE SPEC- IFIED FOR ALL TYPES |
| NS-111-2 | 4B | .312 | .234 | .125 | 4 | .055 | .101 | |
| NS-111-3 | 6B | .312 | .234 | .150 | 6 | .055 | .101 | |
| NS-111-4 | 6C | .375 | .281 | .150 | 6 | .062 | .109 | |
| NS-111-5 | 8C | .375 | .281 | .175 | 8 | .062 | .109 | |
| NS-111-6 | 8D | .500 | .375 | .175 | 8 | .078 | .125 | |
| NS-111-7 | 8E | .625 | .468 | .175 | 8 | .093 | .140 | |
| NS-111-8 | 10C | .375 | .281 | .200 | 10 | .062 | .109 | |
| NS-111-9 | 10D | .500 | .375 | .200 | 10 | .078 | .125 | |
| NS-111-10 | 10E | .625 | .468 | .200 | 10 | .093 | .140 | |
| NS-111-11 | 10F | .750 | .562 | .200 | 10 | .109 | .156 | |
| NS-111-12 | 10G | 1.000 | .750 | .200 | 10 | .140 | .187 | |
| NS-111-13 | 14E | .625 | .468 | .265 | 14 | .093 | .140 | |
| NS-111-14 | 14F | .750 | .562 | .265 | 14 | .109 | .156 | |
| NS-111-15 | 14G | 1.000 | .750 | .265 | 14 | .140 | .187 | |



EXAMPLE: NS-111-1 - 5/16
 DWG. NO. LENGTH
 (TO BE IN SIXTEENTHS)

REF: ISOLANTITE INC.

| REQ. | ITEM | PART NO. | DESCRIPTION | SYMBOL |
|------|------|----------------------------|--|-----------------|
| | | <i>ff</i> | THE TECHNICAL MATERIEL CORP. MAMARONECK, NEW YORK | |
| | | STOCK SIZE | | |
| | | <i>ff</i> <i>ff</i> | INSULATOR, UNGLAZED (SHOULDER BUSHING) | |
| | | MATERIAL WEIGHT PER PC. | | |
| | | <i>ff</i> | 16-1-14-59 | |
| | | TYPE & TEMPER | DRAWN | ELEC. DES. APP. |
| | | <i>ff</i> | MECH. DES. APP. | |
| | | HEAT TREAT. SPEC. | FINAL APPROVAL | |
| | | <i>ff</i> | CHECKED | |
| | | FINISH & SPEC. NO. | NS-111 | |

| ISSUE | ITEM | CHANGED FROM | DATE | CN. NO. | DRAFTS | CHECKER | ENG. APP. |
|------------|---|---|-----------------|---------|--------|---------|-----------|
| TOLERANCES | | | SCALE <i>ff</i> | | | | |
| ALL OTHERS | DEC. DIM. ± FRAC. DIM. ± ANGULAR DIM. ± | DRILL, PUNCH, COMMERCIAL STOCK SIZES AND MANUFACTURERS TOLERANCES ARE NOT INCLUDED. | | | | | |