

IF IT IS FOUND DESIRABLE TO CHANGE ANY TOLERANCE OR OTHER DETAIL SPECIFIED ON THIS DRAWING NOTIFY THE PURCHASER PROMPTLY.

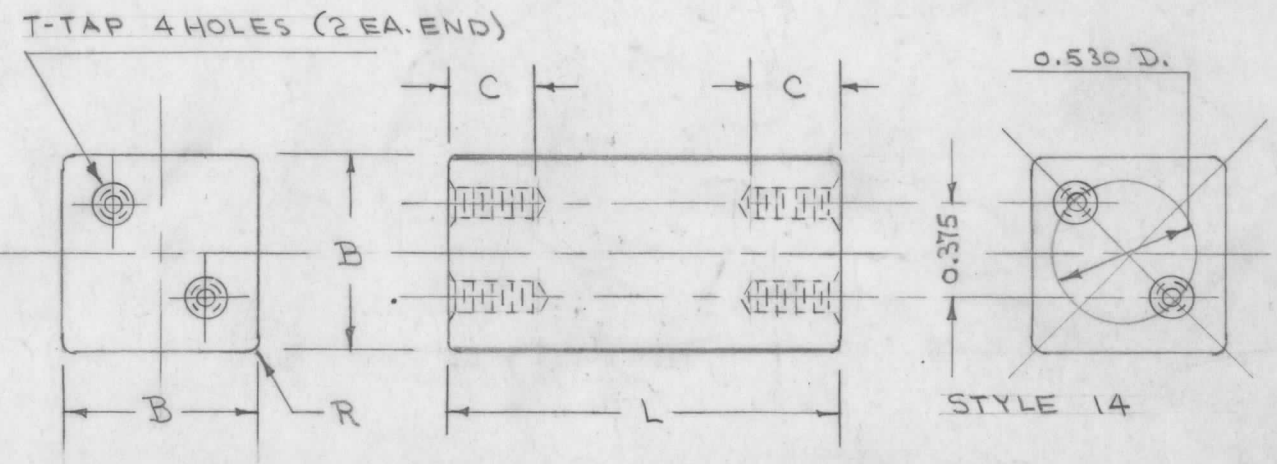
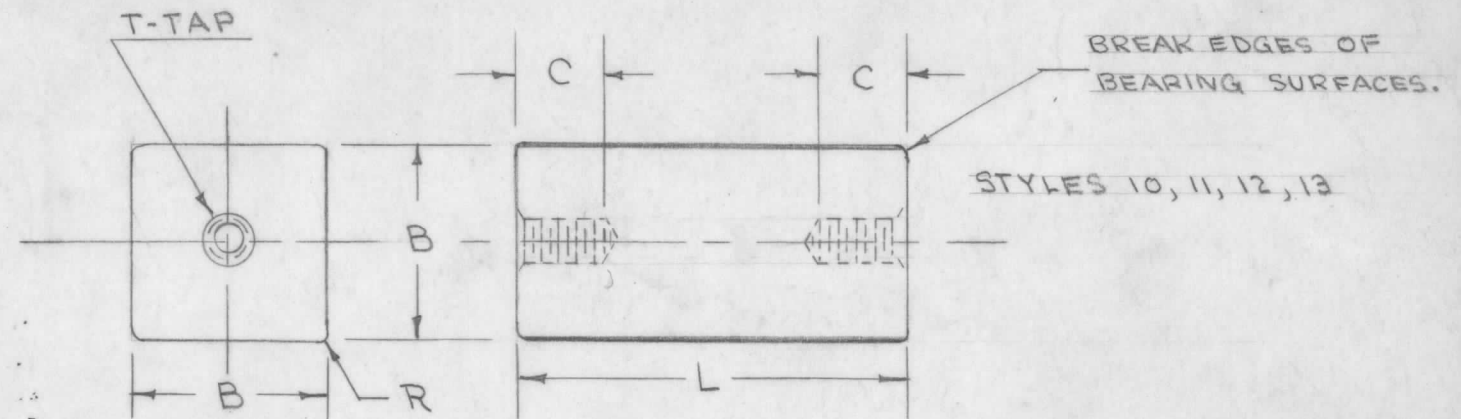
# STANDARD DRAWING

MAXIMUM ALLOWABLE TOLERANCES HAVE BEEN DETERMINED AND DEVIATIONS WILL BE CAUSE FOR REJECTION. REMOVE ALL BURRS AND SHARP EDGES

PART	04	05	06	08	10	12	16	20	24	32	40	48
L	.500	.625	.750	1.000	1.250	1.500	2.000	2.500	3.000	4.000	5.000	6.000
STYLE	10	10	10	10	10	10	10	—	—	—	—	—
	—	—	11	11	11	11	11	11	—	—	—	—
	—	—	—	12	12	12	12	12	12	12	—	—
	—	—	—	—	13	13	13	13	13	13	—	—
—	—	—	14	14	14	14	14	14	14	14	14	

NS-10, 11, 12, 13 AND 14

HEAVY LINES INDICATE GLAZE WHEN SPECIFIED



TYPE DESIGNATION TO BE IN FOLLOWING FORM.

NS 3 U 14 08  
 COMPONENT GRADE FINISH STYLE PART

### NOTICE TO PERSONS RECEIVING THIS DRAWING

THE TECHNICAL MATERIEL CORPORATION claims proprietary right in the material disclosed hereon. This drawing is issued in confidence for engineering information only and may not be reproduced or used to manufacture anything shown hereon without permission from THE TECHNICAL MATERIEL CORPORATION to the user. This drawing is loaned for mutual assistance and is subject to recall at any time.

Property of:

THE TECHNICAL MATERIEL CORPORATION  
 MAMARONECK, NEW YORK

C	TYPE
5/32	1004
3/16	1005
1/4	1006 1106
3/8	1008 To 1016 1108 To 1120 1208 To 1232 1408 To 1448 ENCL.
1/2	1312
5/8	1316 To 1232 ENCL.

STYLE	T THREAD	B	R MAX.
10	6-32	3/8	1/32
11	8-32	1/2	1/16
12	10-32	3/4	1/8
13	1/4x24	1	1/8
14	8-32	1	1/8

GRADE - L-3, L-4 OR L-5 IN ACCORDANCE TO JAN-I-10

FINISH -  
 UNGLAZED - U  
 WHITE GLAZE - W

PART -  
 BASED ON LENGTH EXPRESSED IN EIGHTHS OF INCH.

### NOTES -

- 1- TAPPED HOLES SHALL BE COUNTERSUNK NOT MORE THAN ONE THREAD.
- 2- INSULATORS UP TO 1.500 INCHS IN LENGTH SHALL HAVE A MINIMUM OF 6 USABLE THREADS. INSULATORS 1.500 AND OVER SHALL HAVE A MINIMUM OF 9 USABLE THREADS.

INSULATORS TO BE IN ACC. WITH JAN-I-8 AND AMEND.

REQ.	ITEM	PART NO.	DESCRIPTION	SYMBOL
	#		THE TECHNICAL MATERIEL CORP. MAMARONECK. NEW YORK	
		STOCK SIZE	INSULATOR	
		MATERIAL WEIGHT PER PC.	PILLAR, SQUARE	
		TYPE & TEMPER	C.D.D. 12-17-54	
		HEAT TREAT. SPEC.	DRAWN	ELEC. DES. APP. MECH. DES. APP.
		FINISH & SPEC. NO.	CHECKED	FINAL APPROVAL
			NS-10, 11, 12 13 AND 14	

ISSUE	ITEM	CHANGED FROM	DATE	CN. NO.	DRAFTS	CHECKER	ENG. APP.
TOLERANCES		SCALE: #					
ALL OTHERS	DEC. DIM. ± FRAC. DIM. ± ANGULAR DIM. ±	DRILL, PUNCH, COMMERCIAL STOCK SIZES AND MANUFACTURERS TOLERANCES ARE NOT INCLUDED.					

MODEL PROJECT NO. ASS'Y. NO. DATE

USED ON