

## APPLICATION

QTY  
MODEL USED ON  
RTIH-3

LTR

DESCRIPTION

REVISIONS

ASS'Y NO.  
X

EXPERIMENTAL RELEASE  
DATE 4/15/68

DRAFT

APPD

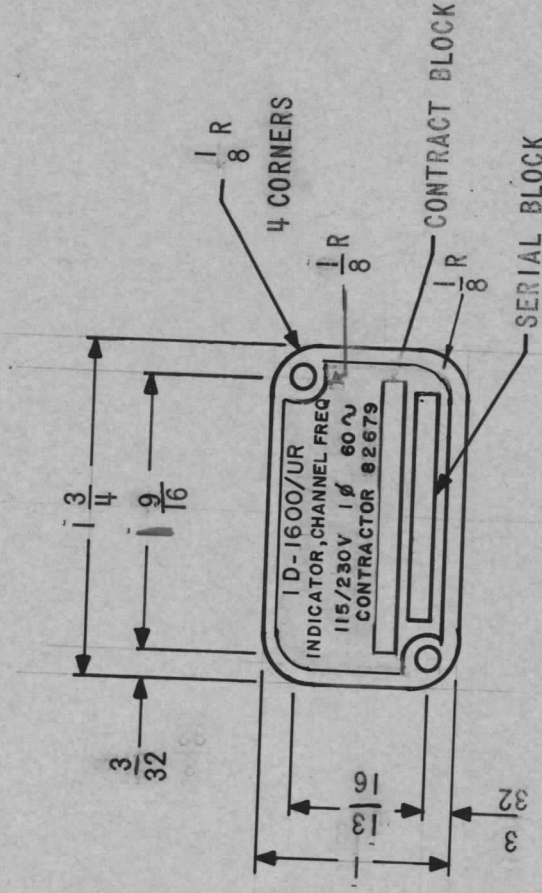
X1 UNIT FUNCTION CLARIFIED  
DATE 7/18/68

X1

R.G.

DATE 9-19-68

Ø  
JAD



2 HOLES:  $1/8$  DIA  
BORDERS:  $1/16$   
SERIAL BLOCK:  $1/8 \times 1-3/16$   
CONTRACT BLOCK:  $1/8 \times 1-1/2$

## NOTES:

- FINISH: REVERSE ETCH, LUSTERLESS BLACK (37038)  
BACKGROUND PER FED-STD-595
- TYPE FACE  
LETTERING TO BE GOTHIC OR SPARTAN;  
W/MODIFIER (HEAVY, MEDIUM, CONDENSED, ETC)  
AS REQUIRED TO FIT SPACE
- IDENTIFICATION PLATE TO BE MANUFACTURED IN ACCORDANCE WITH  
MIL-P-15024 AND AMENDS. (TYPE A)

UNLESS OTHERWISE SPECIFIED  
DIMENSIONS ARE IN INCHES  
AND INCLUDE CHEMICALLY APPLIED  
OR PLATED FINISHES

DECIMALS  
X ± .05  
XX ± .01  
.XXX ± .005

FRACTIONS  
1/64  
ANGLES  
0° .30'

MATERIAL 0.032 ALUMINUM  
5052-H32

FINISH SEE NOTE

REQ'D ITEM

PART NUMBER

DESCRIPTION

SYM.

LIST OF MATERIAL

THE TECHNICAL MATERIEL CORP.  
MAMARONECK, NEW YORK

FINAL APPROVAL

DATE

MÉCH. DES.

DATE

ELECT. DES.

DATE

CHECKED

DATE

DRAWN

DATE

PLATE, IDENTIFICATION

NOTICE TO PERSONS RECEIVING THIS DRAWING  
THE TECHNICAL MATERIEL CORPORATION claims proprietary right in the material  
disclosed hereon. This drawing is issued in confidence for engineering information only  
and may not be reproduced or used to manufacture anything shown hereon without  
permission from THE TECHNICAL MATERIEL CORPORATION to the user. This drawing is  
loaned for mutual assistance and is subject to recall at any time.

SIZE

CODE IDENT. NO.

ISSUE

A 82679

NP 921

SCALE

N75

SHEET

OF