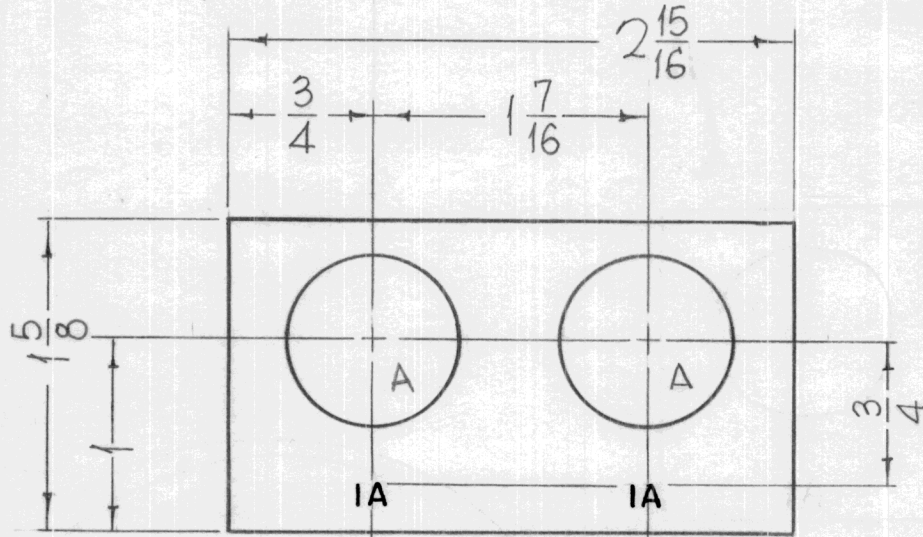


HOLES

A-7/8 DIA.

REQ.

2



REQ. PER UNIT	USED ON		
	MODEL	ASS'Y. NO.	DATE
2	TER25KC50		9-1-64

NP704 Ø

NOTES - UNLESS OTHERWISE SPECIFIED.

ENGRAVING - AS PER TMC SPEC S566.

ALL LETTERING 1/8 HIGH GOTHIC, WHITE FILLED.  
 DEPTH OF STROKE -.010  
 WIDTH OF STROKE -.020

MACHINING -

LATERAL BOW OF PLATE MUST BE KEPT TO .031 TOL.  
 PLATE TO BE FREE OF ALL MACHINING MARKS.

FINISH -

S404 - IRIDITE 14-2 AL. COAT.  
 S114 - ZINC CHROMATE PRIMER.  
 S220 - RCAF BLUE GRAY ENAMEL  
 OR PRIME AND PAINT TO CUSTOMERS SPEC. } FRONT AND EDGES ONLY.

							REQ. ITEM	PART NO.	HAY	DESCRIPTION	SYMBOL		
								.051 THICK		THE TECHNICAL MATERIEL CORP.			
								STOCK SIZE		MAMARONECK, NEW YORK			
Ø	ORIGINAL RELEASE FOR PRODUCTION	9-2-64	Ø	JH				ALUMINUM		PLATE, FUSE ADAPTOR			
SYM	DESCRIPTION	DATE	CH. NO.	DRAFTS	CHECKER	ENG. APP.	MATERIAL						
UNLESS OTHERWISE SPECIFIED DIMENSIONS ARE IN INCHES AND INCLUDE CHEMICALLY APPLIED OR PLATED FINISHES		SCALE	1-1					5052 H32	—	John C Biele	@	RAC	
DECIMALS .X ± .05 .XX ± .01 .XXX ± .005		TOLERANCES		FRACTIONS ± 1/64 ANGLES ± 0° 30'		CODE A	TYPE & TEMPER		HEAT TREAT. SPEC.		DRAWN	CHECKED	FINAL APPROVAL
							SEE NOTES				MA 9/2/64	NP704 Ø	
							FINISH & SPEC. NO.		ELEC. DES. APP.		MECH. DES. APP.		