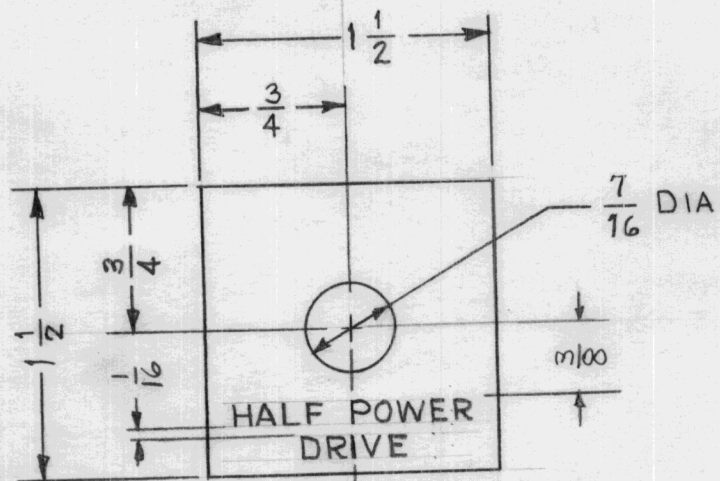


REQ. PER UNIT	USED ON			NP-641	Ø
	MODEL	ASS'Y. NO.	DATE		
1	GPT-750B2		5/21/64		



ALL ENGRAVING TO BE 1/8 HIGH  
 WHITE FILLED GOTHIC.  
 DEPTH OF STROKE: .010  
 WIDTH OF STROKE: .020

- FINISH NOTES:**
1. S404 - IRIDITE 14-2 AL-COAT.
  2. S114 - ZINC CHROMATE PRIMER ) FRONT AND
  3. S115 - SMOOTH GRAY ENAMEL ) EDGES ONLY

REQ. ITEM	PART NO.	DESCRIPTION	SYMBOL
	.051	THE TECHNICAL MATERIEL CORP. MAMARONECK. NEW YORK	
	STOCK SIZE		
Ø	ORIG. PROD. RELEASE	6-8-64	# A.M. @
X	EXPERIMENTAL RELEASE	5/21/64	
SYM	DESCRIPTION	DATE	CH. NO. DRAFTS CHECKER ENG. APP.
UNLESS OTHERWISE SPECIFIED DIMENSIONS ARE IN INCHES AND INCLUDE CHEMICALLY APPLIED OR PLATED FINISHES		SCALE	
		1-1	
DECIMALS .X ± .05 .XX ± .01 .XXX ± .005	TOLERANCES	FRACTIONS ± 1/64 ANGLES ± 0° 30'	CODE A
	5052H32	#	@
	ALUMINUM	NAMEPLATE, IDENTIFICATION SPECIAL MODIFICATION FOR NEW YORK TELEPHONE COMPANY	
	MATERIAL		
	TYPE & TEMPER	HEAT TREAT. SPEC.	DRAWN
	SEE NOTE		CHECKED
	FINISH & SPEC. NO.	ELEC. DES. APP.	MECH. DES. APP.
			FINAL APPROVAL
			NP-641 Ø