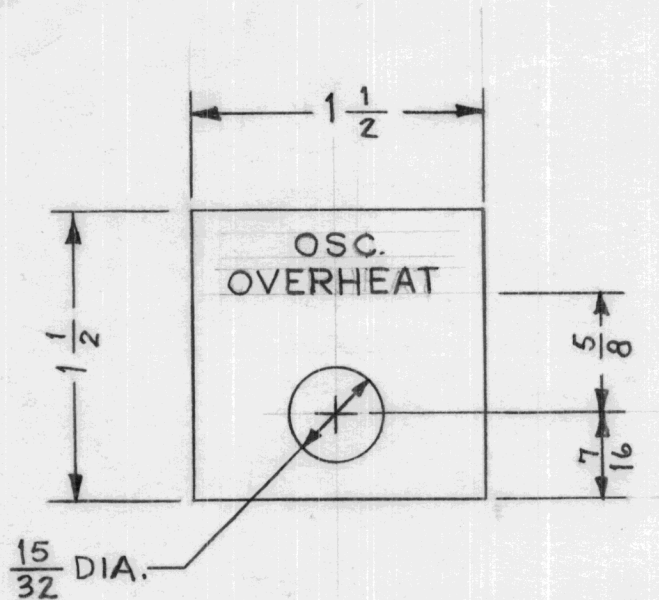


REQ. PER UNIT	USED ON			NP-636 0
	MODEL	ASS'Y. NO.	DATE	
1	HFR-1	KIT-184	5-13-64	



LETTERING 1/8" HIGH GOTHIC  
ON TMC GRAY BACKGROUND

NOTE:

FINISH-

S404 - IRIDITE 14-2 AL-COAT

S114 - ZINC CHROMATE PRIMER

S115 - SMOOTH GRAY ENAMEL

REQ. ITEM	PART NO.	DESCRIPTION	SYMBOL
	.040	THE TECHNICAL MATERIEL CORP.	
	STOCK SIZE	MAMARONECK, NEW YORK	
0	ALUMINUM	NAMEPLATE, IDENTIFICATION	
	MATERIAL		
0	ORIGINAL RELEASE FOR PRODUCTION	4-24-64	0 A.M.
SYM	DESCRIPTION	DATE	CH. NO. DRAFTS CHECKER ENG. APP.
UNLESS OTHERWISE SPECIFIED DIMENSIONS ARE IN INCHES AND INCLUDE CHEMICALLY APPLIED OR PLATED FINISHES		SCALE	
		1:1	
DECIMALS	FRACTIONS	CODE	
.X ± .05	± 1/64		
.XX ± .01	ANGLES		
.XXX ± .005	± 0° 30'		
TOLERANCES			
	5052 H32	M. TANTILLO	
	TYPE & TEMPER	HEAT TREAT. SPEC.	DRAWN
	SEE NOTE		CHECKED
	FINISH & SPEC. NO.	ELEC. DES. APP.	MECH. DES. APP.
			FINAL APPROVAL
			NP-636 0