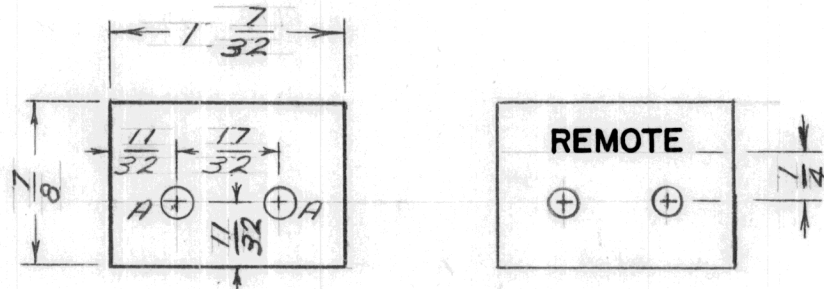


ISSUE	ITEM	CHANGED FROM	DATE	CN. NO.	DRAFTS	CHECKER	ENG. APP.	REQ.	ITEM	PART NO.	DESCRIPTION	SYMBOL
0		ORIGINAL RELEASE FOR PRODUCTION	3.2.65	0	AL							



"A" HOLES - 9/64 DIA - 2 REQ

LETTERING: 1/8 HIGH WHITE GOTHIC
LOCATED AS SHOWN
AS PER TMC SPEC: 5127

TTRR-251		022/65		14-12-64		.040		TMC (Canada) LIMITED OTTAWA ONTARIO					
MODEL	PROJECT NO.	ASS'Y. NO.	DATE	STOCK SIZE		ALUM.						NAMEPLATE	
USED ON				MATERIAL		WEIGHT PER PC.		(REMOTE)					
MAXIMUM ALLOWABLE TOLERANCES HAVE BEEN DETERMINED AND DEVIATIONS WILL BE CAUSE FOR REJECTION. REMOVE ALL BURRS AND SHARP EDGES				IF IT IS FOUND DESIRABLE TO CHANGE ANY TOLERANCE OR OTHER DETAIL SPECIFIED ON THIS DRAWING NOTIFY THE PURCHASER PROMPTLY.				5052-H 32		RD		ELEC. DES. APP. MECH. DES. APP.	
								TYPE & TEMPER		DRAWN		MECH. DES. APP.	
TOLERANCES				SCALE		HEAT TREAT. SPEC.		CHECKED		FINAL APPROVAL			
ALL OTHERS:		DEC. DIM. ±		DIMENSIONS IN INCHES UNLESS OTHERWISE SPECIFIED				5115 - SMOOTH GREY ENAMEL		NP10125 0			
		FRAC. DIM. ±		DRILL, PUNCH, COMMERCIAL STOCK SIZES AND MANUFACTURERS TOLERANCES ARE NOT INCLUDED.				FINISH & SPEC. NO.					
		ANGULAR DIM. ±											