

IF IT IS FOUND DESIRABLE TO CHANGE ANY TOLERANCE OR OTHER DETAIL SPECIFIED ON THIS DRAWING NOTIFY THE PURCHASER PROMPTLY.

MAXIMUM ALLOWABLE TOLERANCES HAVE BEEN DETERMINED AND DEVIATIONS WILL BE CAUSE FOR REJECTION. REMOVE ALL BURRS AND SHARP EDGES

NP-10014

USED ON

MODEL

PROJECT NO.

ASS'Y. NO.

DATE

8548

A-10105

10/3/57

TMC CANADA LTD.

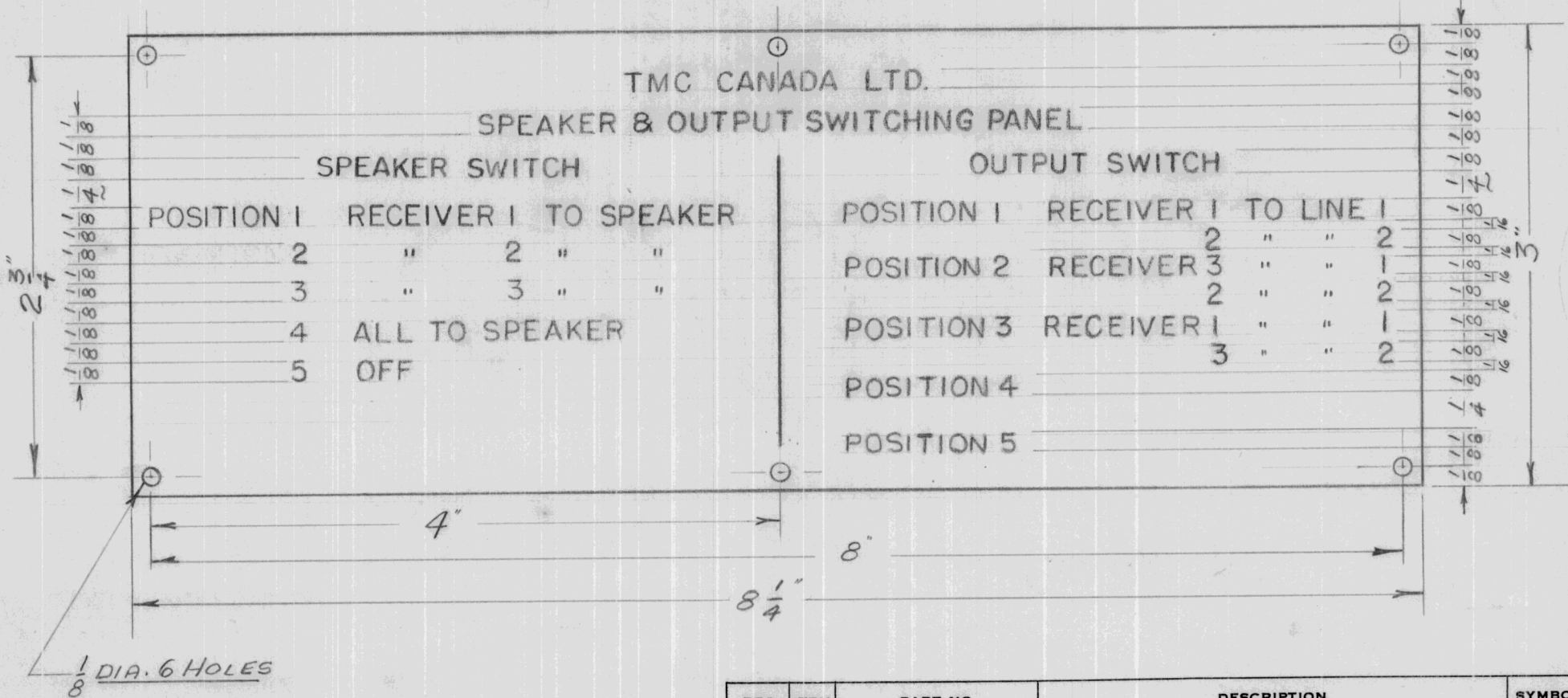
SPEAKER & OUTPUT SWITCHING PANEL

SPEAKER SWITCH

OUTPUT SWITCH

POSITION 1	RECEIVER 1	TO SPEAKER
2	"	2 " "
3	"	3 " "
4	ALL TO SPEAKER	
5	OFF	

POSITION 1	RECEIVER 1	TO LINE 1
2	"	2 " " 2
POSITION 2	RECEIVER 3	" " 1
3	"	2 " " 2
POSITION 3	RECEIVER 1	" " 1
4	3	" " 2
POSITION 4		
POSITION 5		



ENGRAVING TO BE WHITE FILL

REQ.	ITEM	PART NO.	DESCRIPTION	SYMBOL
		.031 SHEET	TMC (Canada) LIMITED OTTAWA ONTARIO	
		STOCK SIZE		
		ALUMINUM	NAMEPLATE FOR SPEAKER	
		MATERIAL	OUTPUT SWITCHING PANEL	
		WEIGHT PER PC.		
		57 S 1/4 HARD	L. MARION	MCP-2
		TYPE & TEMPER	DRAWN	ELEC. DES. APP. MECH. DES. APP.
		HEAT TREAT. SPEC.	M. Yurko	
			CHECKED	FINAL APPROVAL
		S-174	NP-10014	
		FINISH & SPEC. NO.		

ISSUE	ITEM	CHANGED FROM	DATE	CN. NO.	DRAFTS	CHECKER	ENG. APP.
-------	------	--------------	------	---------	--------	---------	-----------

TOLERANCES

SCALE FULL

ALL OTHERS

DEC. DIM. ±
FRAC. DIM. ±
ANGULAR DIM. ±

DRILL, PUNCH, COMMERCIAL STOCK SIZES AND MANUFACTURERS TOLERANCES ARE NOT INCLUDED.