

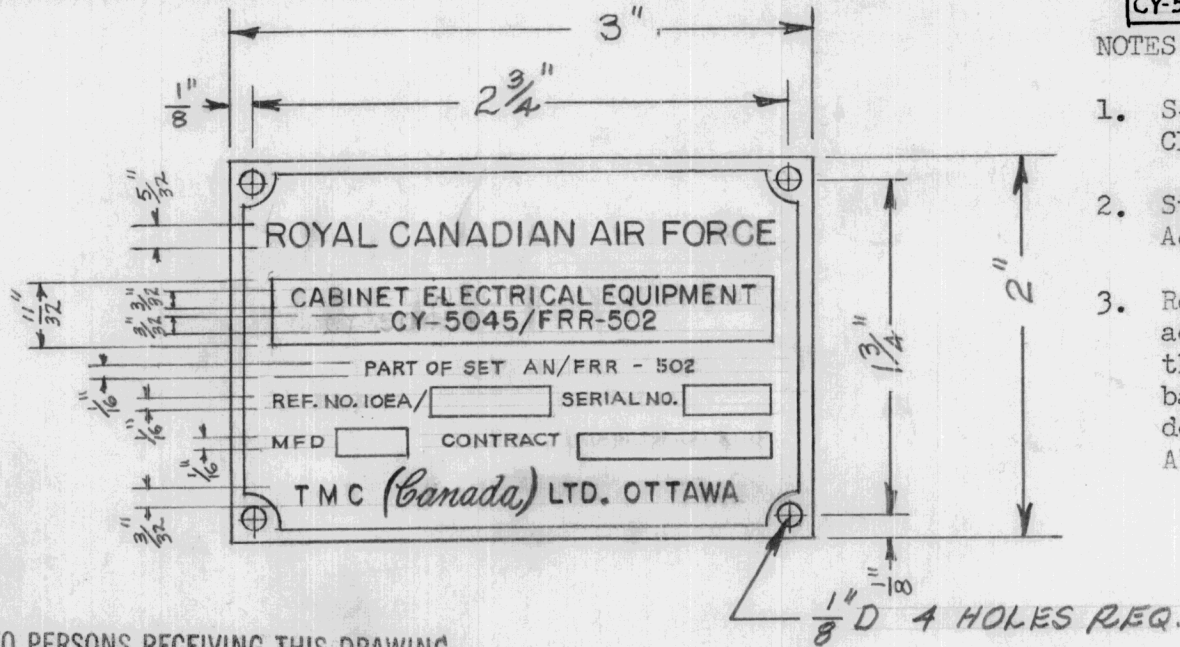
IF IT IS FOUND DESIRABLE TO CHANGE ANY TOLERANCE OR OTHER DETAIL SPECIFIED ON THIS DRAWING NOTIFY THE PURCHASER PROMPTLY.

MAXIMUM ALLOWABLE TOLERANCES HAVE BEEN DETERMINED AND DEVIATIONS WILL BE CAUSE FOR REJECTION. REMOVE ALL BURRS AND SHARP EDGES

NP-153-A

USED ON

MODEL	CONTRACT NO	ASS'Y. NO.	DATE
CY-5045/FFR-502	PI8-10-500/AIR		9-4-56



NOTES:

1. S-220 Blue Gray Etched Background and Clear Lacquer.
2. Stamp Blocks to be Large Enough to Accommodate 1/16" Numbers.
3. Relative heights of type shall be adhered to in multiples on reductions of these sizes, in order that uniform balance and dominance of set or components designation and the title ROYAL CANADIAN AIR FORCE be maintained.

NOTICE TO PERSONS RECEIVING THIS DRAWING

THE TECHNICAL MATERIEL CORPORATION claims proprietary right in the material disclosed hereon. This drawing is issued in confidence for engineering information only and may not be reproduced or used to manufacture anything shown hereon without permission from THE TECHNICAL MATERIEL CORPORATION to the user. This drawing is loaned for mutual assistance and is subject to recall at any time.

Property of:

THE TECHNICAL MATERIEL CORPORATION  
MAMARONECK, NEW YORK

RE. DWG NP-10006 NAMEPLATE TO BE FITTED ON REAR OF CABINET

REQ.	ITEM	PART NO.	DESCRIPTION	SYMBOL
			<b>TMC (Canada) LIMITED</b> OTTAWA ONTARIO	
		STOCK SIZE	NAMEPLATE R.C.A.F	
		MATERIAL	WEIGHT PER PC.	
			CY-5045/FRR-502 (TMC FFR-DP)	
		TYPE & TEMPER	E.L	
			DRAWN	ELEC. DES. APP. MECH. DES. APP.
		HEAT TREAT. SPEC.	CHECKED	FINAL APPROVAL
		FINISH & SPEC. NO.		NP-153 A

A	I	CONTRACT No DELETED - DWG	9-4-56	E. G			
ISSUE	ITEM	CHANGED FROM	DATE	CN. NO.	DRAFTS	CHECKER	ENG. APP.
TOLERANCES		SCALE					
ALL OTHERS	DEC. DIM. ± FRAC. DIM. ± ANGULAR DIM. ±	DRILL, PUNCH, COMMERCIAL STOCK SIZES AND MANUFACTURERS TOLERANCES ARE NOT INCLUDED.					