

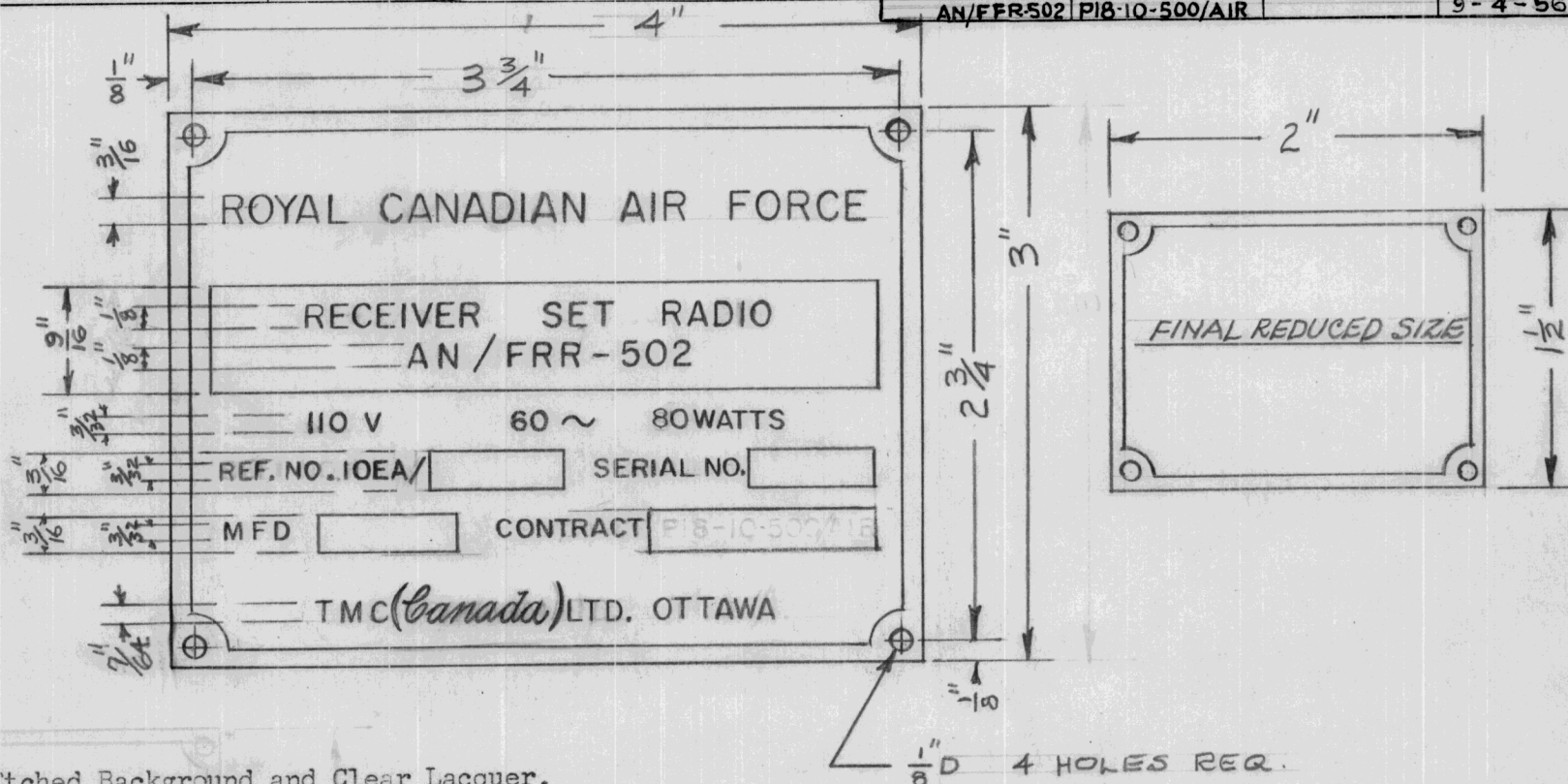
IF IT IS FOUND DESIRABLE TO CHANGE ANY TOLERANCE OR OTHER DETAIL SPECIFIED ON THIS DRAWING NOTIFY THE PURCHASER PROMPTLY.

NP-150-A

MAXIMUM ALLOWABLE TOLERANCES HAVE BEEN DETERMINED AND DEVIATIONS WILL BE CAUSE FOR REJECTION. REMOVE ALL BURRS AND SHARP EDGES

USED ON

MODEL	CONTRACT NO	ASS'Y. NO.	DATE
AN/FRR-502	PI8-10-500/AIR		9-4-56



NOTES:

1. S-220 Blue Gray Etched Background and Clear Lacquer.
2. Stamp Blocks to be Large Enough to Accommodate 1/16" Numbers.
3. Relative heights of type shall be adhered to in multiples on reductions of these sizes, in order that uniform balance and dominance of set or component designation and the title ROYAL CANADIAN AIR FORCE be maintained.

NO MODIFICATION PLATE TO BE FITTED.

REQ.	ITEM	PART NO.	DESCRIPTION	SYMBOL
			TMC(Canada) LIMITED OTTAWA ONTARIO	
			NAMEPLATE R.C.A.F	
			SET AN/FRR-502 (TMC FFR)	
			E.L.	
			DRAWN	ELEC. DES. APP. MECH. DES. APP.
			CHECKED	FINAL APPROVAL
				NP-150 A

A	1	CONTRACT NO DELETED - DWG	9-4-56	E.G			
ISSUE	ITEM	CHANGED FROM	DATE	CN. NO.	DRAFTS	CHECKER	ENG. APP.
TOLERANCES			SCALE				
ALL OTHERS	DEC. DIM. ± FRAC. DIM. ± ANGULAR DIM. ±		DRILL, PUNCH, COMMERCIAL STOCK SIZES AND MANUFACTURERS TOLERANCES ARE NOT INCLUDED.				