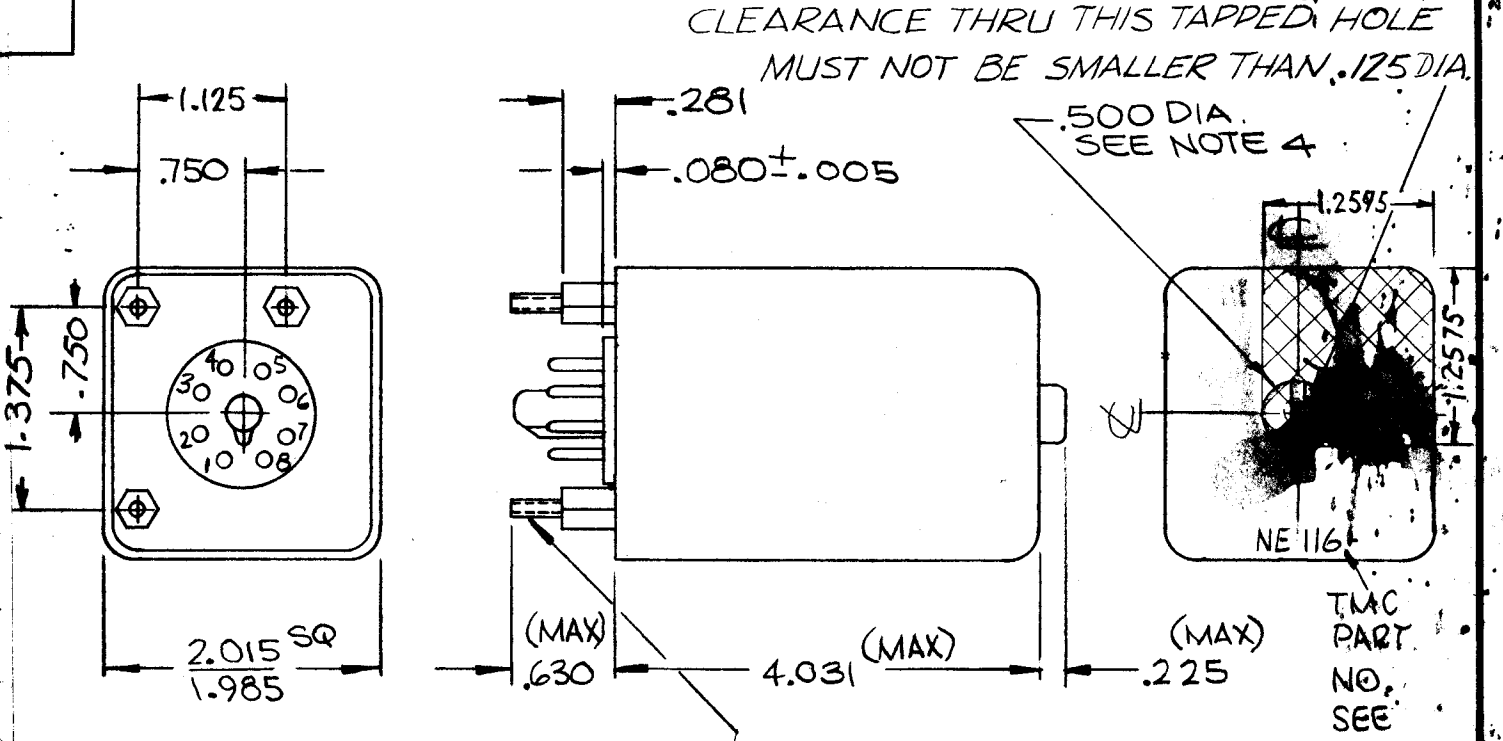


TMC PART NUMBER	NF116-1	NF116-2	NF116-3
MFG. PART NUMBER			
FREQUENCY	1 MHz	1 MHz	1 MHz
SUPPLY VOLTAGE	28 +2/-5 VDC	28 +2/-5 VDC	28 +2/-5 VDC
OUTPUT	1 VRMS +50% INTO 50Ω -10%	1 VRMS +50% INTO 50Ω -10%	1 VRMS +50% INTO 50Ω -10%
HARMONIC DISTORTION	15% MAXIMUM	15% MAXIMUM	15% MAXIMUM
SHOCK (50 G)	$\pm 5 \times 10^{-6}$	$\pm 5 \times 10^{-6}$	$\pm 1 \times 10^{-7}$
VIBRATION ( 5-55 Hz), .016" da	$\pm 5 \times 10^{-6}$	$\pm 5 \times 10^{-6}$	$\pm 1 \times 10^{-7}$
STABILITY (AGING RATE)	$1 \times 10^{-6}$ /DAY	$1 \times 10^{-7}$ /DAY	$1 \times 10^{-8}$ /DAY
SHORT-TERM STABILITY (PER 15 MIN. AFTER 24-HOUR WARM-UP)	$4 \times 10^{-7}$	$4 \times 10^{-8}$	$4 \times 10^{-9}$
TEMPERATURE (-30°C TO +55°C)	$\pm 3 \times 10^{-6}$	$\pm 3 \times 10^{-7}$	$\pm 3 \times 10^{-8}$
TEMPERATURE (PER 15°C CHANGE)	$\pm 1 \times 10^{-6}$	$\pm 1 \times 10^{-7}$	$\pm 1 \times 10^{-8}$
WARM-UP (4 HOURS AFTER TURN-ON)	$1 \times 10^{-6}$ /DAY	$5 \times 10^{-7}$ /DAY	$1 \times 10^{-7}$ /DAY
ALTITUDE (10,000 FEET)	NO EFFECT	NO EFFECT	NO EFFECT
LOAD CHANGE ( $\pm 10\%$ )	$\pm 3 \times 10^{-7}$	$\pm 1 \times 10^{-7}$	$\pm 5 \times 10^{-9}$
STORAGE (-65°C TO +75°C)	NO EFFECT	NO EFFECT	NO EFFECT

REVISIONS					
SYM	DESCRIPTION	DATE	E.M.N. NO.	DRAFT	CHKD
X	EXP. RELEASE	1-17-67		GDL	
Ø	ORIGINAL RELEASE FOR PRODUCTION	1-17-67	Ø	GDL	
A	LOCATION OF DIM. 225 CLARIFIED SPECS. REVISED-NF116-2 & NF116-3 ADDED	5-8-67	18175	GDL	OP
B	DELE. MFG P/N 5-5401-96 WAS 5401-308	7-20-67	18412	HEA	OP
C	NOTE 4 ADDED, MODEL WAS MMX-1	9-28-67	18527	H.G.	OP
D	ADDED S-401-453	2-27-68	CC	HS	OP
E	ADD. NOTE. TO TRIMMER ADJ ACCESS HOLE	5-21-69	19437	GE	OP



OCTAL BASE CONNECTIONS,  
PIN 1- NC  
2-OSC + 28VDC  
3-OVEN + 28VDC  
4-NC  
5-NC  
6-OSC OUTPUT  
7-REF GRD -28VDC  
8-NC

SPECIAL #6-32 RAISED MTG STUDS

- NOTES:
1. ALL UNITS ARE TO BE INTERCHANGEABLE PER THE PIN CONNECTIONS AND MECHANICAL CONFIGURATION
  2. HUMIDITY: UNIT HERMETICALLY SEALED
  3. MARKING: MARK TMC PART NUMBER 1/8 HIGH GOTHIC WITH LATEST REV. LETTER (APPROX AS SHOWN)
  4. TUNING ADJUST MAY BE LOCATED ANYWHERE WITHIN CROSS HATCHED AREA.

MMX-( )	
Q'TY./UNIT	MODEL USED ON
SCALE	CODE
	S401-96
	S401-453

THE CONTENTS OF THIS DRAWING ARE THE EXCLUSIVE PROPERTY OF THE TECHNICAL MATERIEL CORP. ITS UNAUTHORIZED USE OR REPRODUCTION IN WHOLE OR IN PART IS STRICTLY FORBIDDEN

REQ'D.	ITEM	PART NUMBER	DESCRIPTION
POSE LIST OF MATERIAL			
MATERIAL		THE TECHNICAL MATERIEL CORP. MAMARONECK, NEW YORK	
FINISH		TITLE OSCILLATOR, OVENIZED	
UNLESS OTHERWISE SPECIFIED DIMENSIONS ARE IN INCHES AND INCLUDE CHEMICALLY APPLIED OR PLATED FINISHES		DRAWN <i>WTO</i>	DATE 11.30.66
DECIMALS .X ± .05 .XX ± .01 .XXX ± .005		CHECKED <i>JCB</i>	DATE
FRACTIONS ± 1/64 ANGLES ± 0° 30'		ELECT. DES.	DATE
TOLERANCES		MECH. DES.	DATE
		SHEET	

NOTES

NF116

