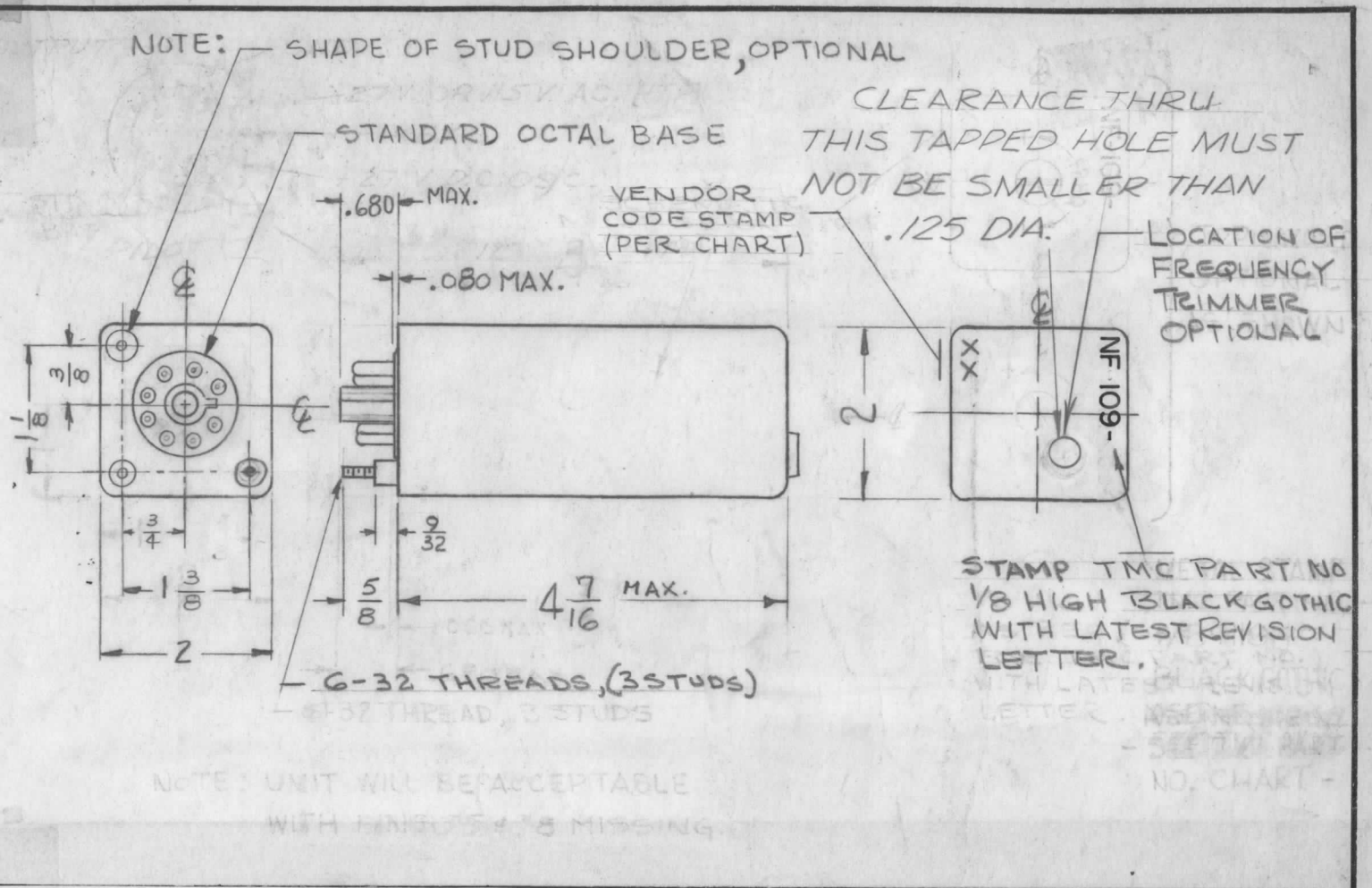


NF-109-FN	THE CONTENTS OF THIS DRAWING ARE THE EXCLUSIVE PROPERTY OF THE TECHNICAL MATERIEL CORP. ITS UNAUTHORIZED USE OR REPRODUCTION IN WHOLE OR IN PART IS STRICTLY FORBIDDEN.	
	PERFORMANCE CHARACTERISTIC	FREQUENCY 1 MC
INPUT:		
Voltage to Oscillator		23 to 30
Voltage to Oven		23 to 30
Current to Oven Controller, Amps, Max.		.65
Oven Input Power, After Warm Up		.07 watts per °C rise of oven temp. above ambient
OUTPUT:		
Volts across 10K ohms		1 to 2 Sine Wave
Internal Impedance (approx.)		5000
Distortion		20% Maximum
STABILITY: Af/f (Max.) Vs:		
Input voltage change of ± 1.0 Volt		± 1.0 x 10 ⁻⁸
Load resistance change of + 10%		5 x 10 ⁻⁹
Vibration: in accordance with mil. std. 202B Method 201A		5 x 10 ⁻⁸
Ambient Temperature Change: 15°C		1 x 10 ⁻⁸
Shock 100 G. for 8 ms.		5 x 10 ⁻⁸
Coldstorage - -65 °C.		5 x 10 ⁻⁸
Humidity 95 to 100%		0
Altitude 10,000 ft.		0
Time: 24 Hours after initial turn on		1 x 10 ⁻⁸ /24 hrs.
24 Hours after initial turn on		4 x 10 ⁻⁹ /15 min.
FREQUENCY ADJUST:		
Minimum trim range		+70 x 10 ⁻⁸
WARM - UP: Af/f, Starting at - 0°C., t=0		
t = 60 Min.		1 x 10 ⁻⁸ /5 Min.
t = 24 Hrs.		1 x 10 ⁻⁸ /24 Hrs.
Ambient Temperature:		
Range		+15°C to +65°C



NOTICE TO PERSONS RECEIVING THIS DRAWING

THE TECHNICAL MATERIEL CORPORATION claims proprietary right in the material disclosed hereon. This drawing is issued in confidence for engineering information only and may not be reproduced or used to manufacture anything shown hereon without permission from THE TECHNICAL MATERIEL CORPORATION. This drawing is loaned for mutual assistance and is subject to recall at any time.

NOTE:
 1. UNIT WILL BE ACCEPTABLE WITH PINS 5 & 8 MISSING.
 2. SCHEMATIC CAN BE STAMPED, OR AS SHOWN IN CHART.

SYM	DESCRIPTION	DATE	CH. NO.	DRAFTS	CHECKER	ENG. APP.
K	DELE. NOTE 2. ADD PIN ASSIGN.	8-11-69	19527	GE	JON CO	JON CO
J	NOTE ADD TRIMMER ADJ ACC HL.	5-21-69	19437	GE	JON CO	JON CO
H	DELETED OPTIONAL LAYOUT - GEN. REV.	2-7-66	15728	HA	JON CO	JON CO
G	OLD NOTE 1, 2 DELE., NEW NOTE 1, 2 WAS 3, 4 MFG REF. CHART ADD., STAMP NOTE ADD. TMC PIN CHART DELE., EXCEPT PIN INFO.	8-27-64	12186	WB	JON CO	JON CO
F	DWG UPDATED TO MEET MFR. NEW PART #	11/14/63	10411	WB	JON CO	JON CO
E	NF-109-3 & NF-109-4 ADDED TO CHART. NOTES 1, 2 & 4 ADDED ON SIDE VIEW.	9/27/63	10085	WB	JON CO	JON CO
D	PICTORIAL & CHART CLARIFIED	3-20-63	8422	WB	JON CO	JON CO

UNLESS OTHERWISE SPECIFIED:
 DIMENSIONS ARE IN INCHES
 TOLERANCES ON FRACTIONS ± 1/64 DECIMALS ± .005 ANGLES ± 1/2°

SCALE:
 MAXIMUM ALLOWABLE TOLERANCES HAVE BEEN DETERMINED AND ANY DEVIATIONS WILL BE CAUSE FOR REJECTION. REMOVE ALL BURRS AND SHARP EDGES

REQ. PER UNIT	MODEL	SECTION	ASS'Y. NO.	DATE

MFG. REF.	TMC VENDOR CODE	STAMP ON TOP	VENDOR PART NO.
	S401-77	77	CCO-7MD-3H
	S401-96	96	JKT043(X)
	S401-210	210	F2284-1

PIN ASSIGNMENT

PIN: 1-N.C.
 2-OSCILLATOR B+: +28 V. DC
 3-OVEN HEATER: +28 V. DC REG. 5% MIN.
 4-PILOT; OR NO CONNECTION
 5-N.C.
 6-OUTPUT
 7-OVEN HEATER & OSCILLATOR GROUND: -28 V. DC
 8-N.C.

REQ.	ITEM	PART NO.	DESCRIPTION	SYMBOL
			THE TECHNICAL MATERIEL CORP. MAMARONECK, NEW YORK	
			PLUG IN FREQUENCY STANDARD	
			1 Megacycle	
			RUZZO	
			TYPE & TEMPER	
			HEAT TREAT. SPEC.	
			DRAWN	
			CHECKED	
			FINAL APPROVAL	
			NF 109	K
			FINISH & SPEC. NO.	
			ELEC. DES. APP.	
			MECH. DES. APP.	