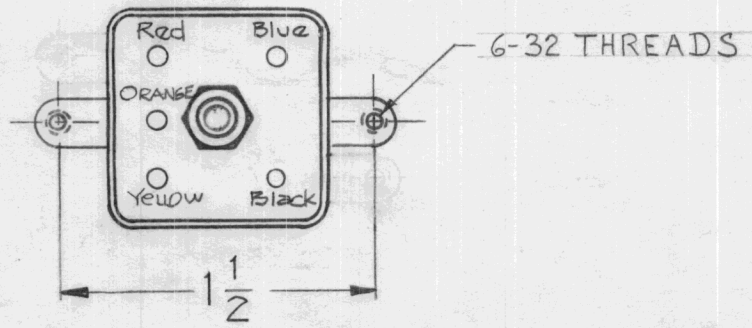
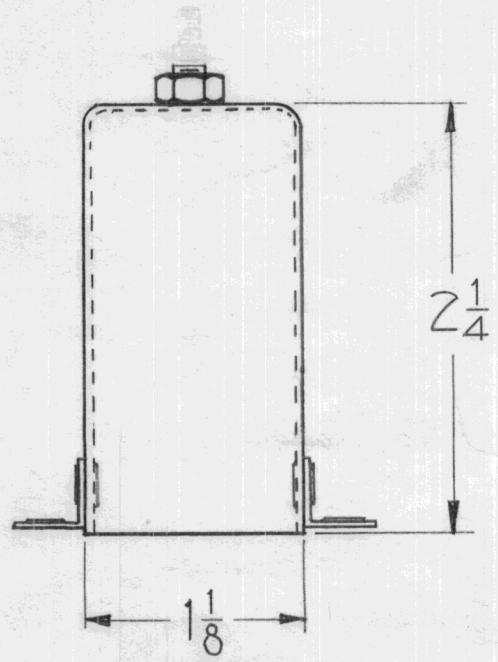


| | | | | | |
|---------------|---------|------------|--------|--------|---|
| REQ. PER UNIT | USED ON | | | NF-106 | B |
| | MODEL | ASS'Y. NO. | DATE | | |
| 1 | CSS-1 | | 5-2-60 | | |



| USED ON MODEL | REQ. | FUNCTION | OPER. FREQ. | SYM |
|---------------|------|------------------|-------------|------|
| CSS-1 | 1 | COUPLING NETWORK | 1 MC | Z601 |

ELECTRICAL SPECIFICATION
 $L - 85^{+10}$ MICROHENRIES
 $Q - 50$ or Greater
 FREQ (TEST) - 2.5 MCS

| ISSUE | ITEM | CHANGED FROM | DATE | CH. NO. | DRAFTS | CHECKER | ENG. APP. | REQ. ITEM | PART NO. | DESCRIPTION | SYMBOL | |
|---|------|---|---|---------|---------|---------|-----------|--------------------|-------------------|--|----------------|----------------|
| | | | | | | | | | | THE TECHNICAL MATERIEL CORP. MAMARONECK, NEW YORK | | |
| B | 2 | Elect. Spec. FREQ was 790KC | 6-3-61 | 4983 | | J.C.B. | | | | | STOCK SIZE | |
| | 1 | Elect. Spec. Q' was 75 | | | | | | | | | | |
| A | 1 | Electrical Specifications "L" was 100 Microhenries | 10-24-60 | 3247 | | J.C.B. | | | | NETWORK, COUPLING | | |
| TOLERANCES | | | SCALE: | | 2A-1895 | | | MATERIAL | | | | |
| DEC. DIM. ± FRAC. DIM. ± ANGULAR DIM. ± | | | MAXIMUM ALLOWABLE TOLERANCES HAVE BEEN DETERMINED AND ANY DEVIATIONS WILL BE CAUSE FOR REJECTION. REMOVE ALL BURRS AND SHARP EDGES | | | | | TYPE & TEMPER | HEAT TREAT. SPEC. | DRAWN | CHECKED | FINAL APPROVAL |
| | | | | | | | | FINISH & SPEC. NO. | | ELEC. DES. APP | MECH. DES. APP | NF-106 B |