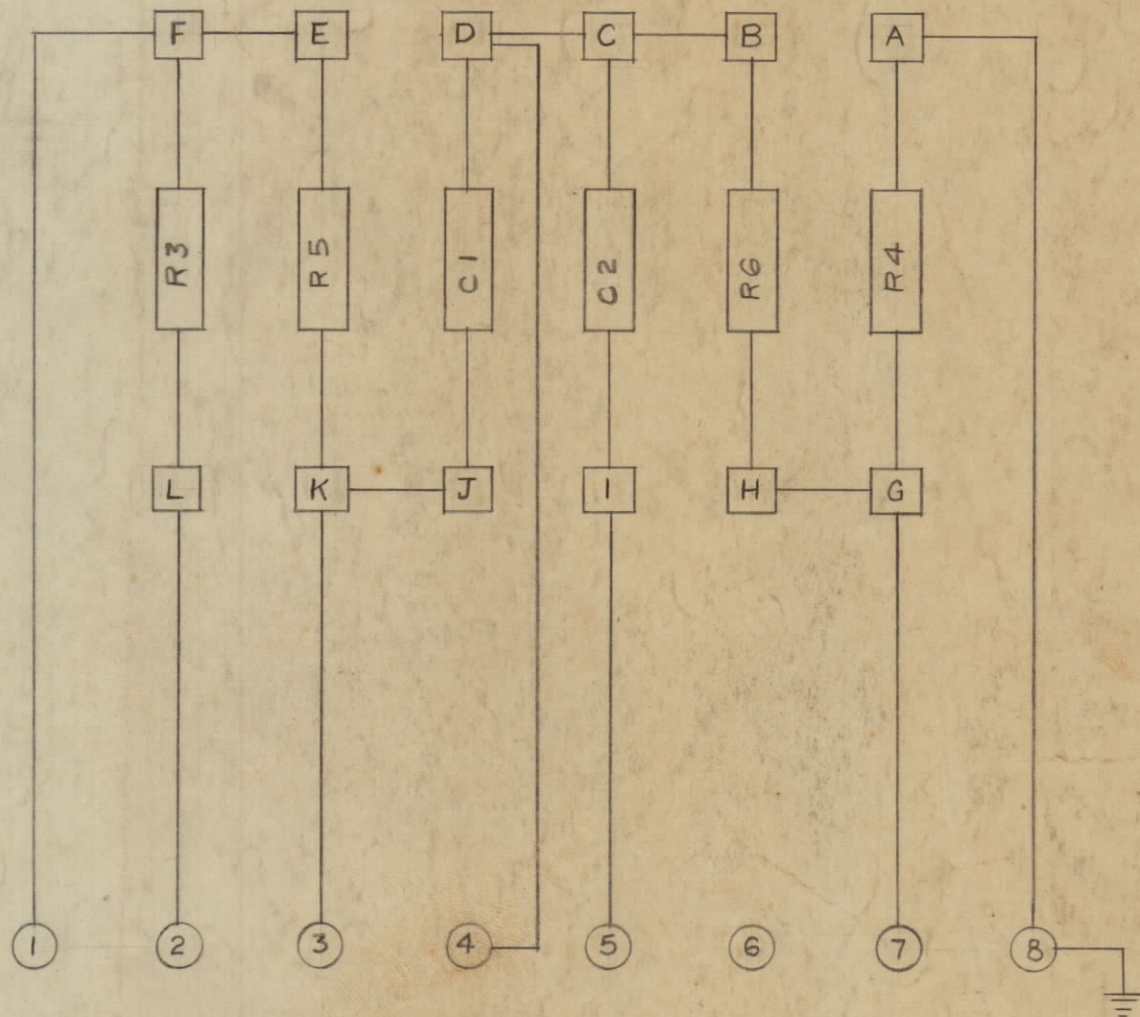


IF IT IS FOUND DESIRABLE TO CHANGE ANY TOLERANCE OR OTHER DETAIL SPECIFIED ON THIS DRAWING NOTIFY THE PURCHASER PROMPTLY.

MAXIMUM ALLOWABLE TOLERANCES HAVE BEEN DETERMINED AND DEVIATIONS WILL BE CAUSE FOR REJECTION. REMOVE ALL BURRS AND SHARP EDGES

TMC PART NO. NF-100-1 () SEE CHART BELOW

SYM. Z1
PICTORIAL WIRING DIAGRAM

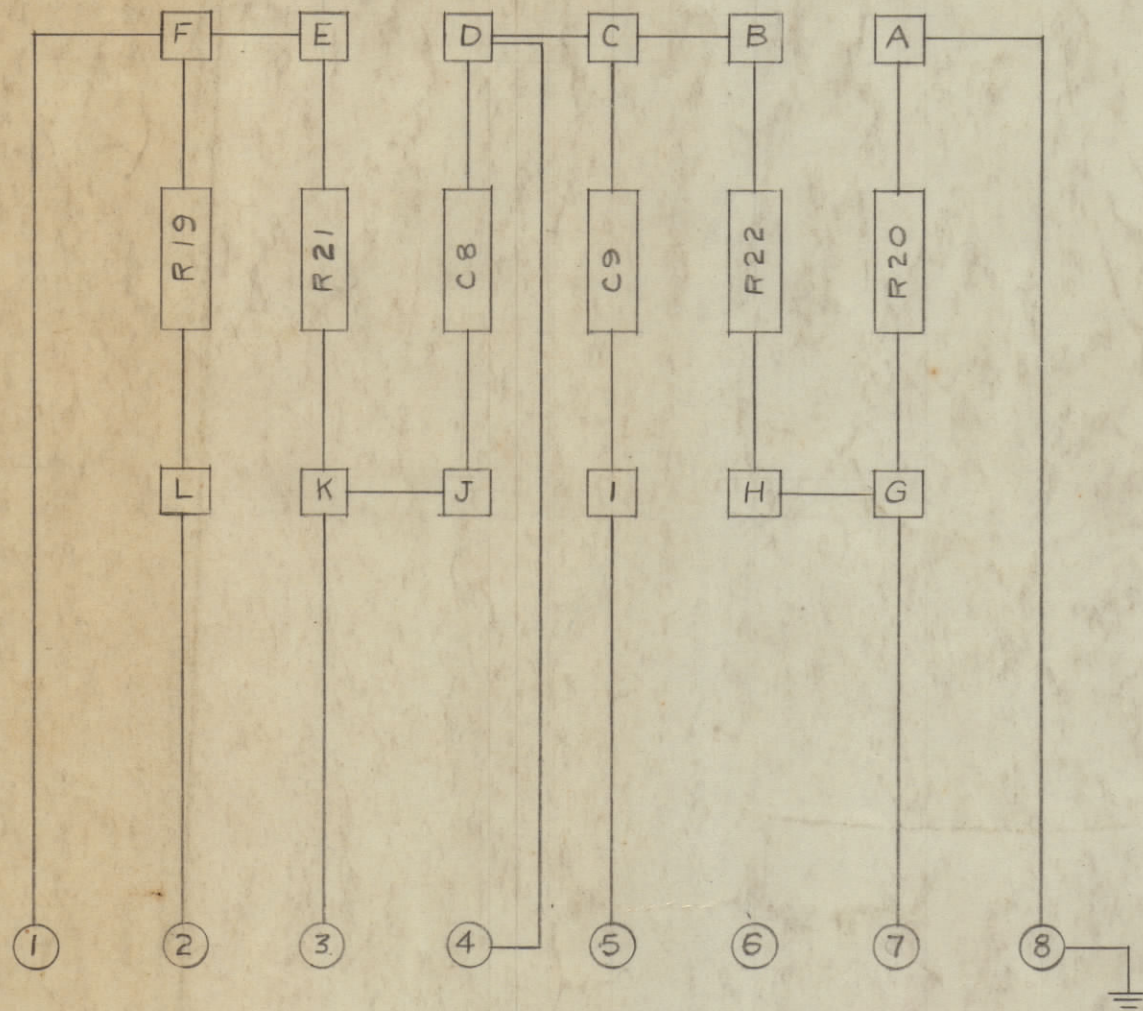


BFO

TMC NO.	FREQ.	R3/R4	R5/R6	C1/C2
NF-100-1A	595 ~	—#—	RC-109-14	CM-106-2
NF-100-1B	1105 ~	RC20GF182J	RC-109-11	CM-106-5
NF-100-1C	1615 ~	RC20GF362J	RC-109-8	CM-106-8
NF-100-1D	2125 ~	RC20GF332J	RC-109-5	CM-106-11
NF-100-1E	2635 ~	RC20GF681J	RC-109-2	CM-106-14

TMC PART NO. NF-100-2 () SEE CHART BELOW

SYM. Z2
PICTORIAL WIRING DIAGRAM

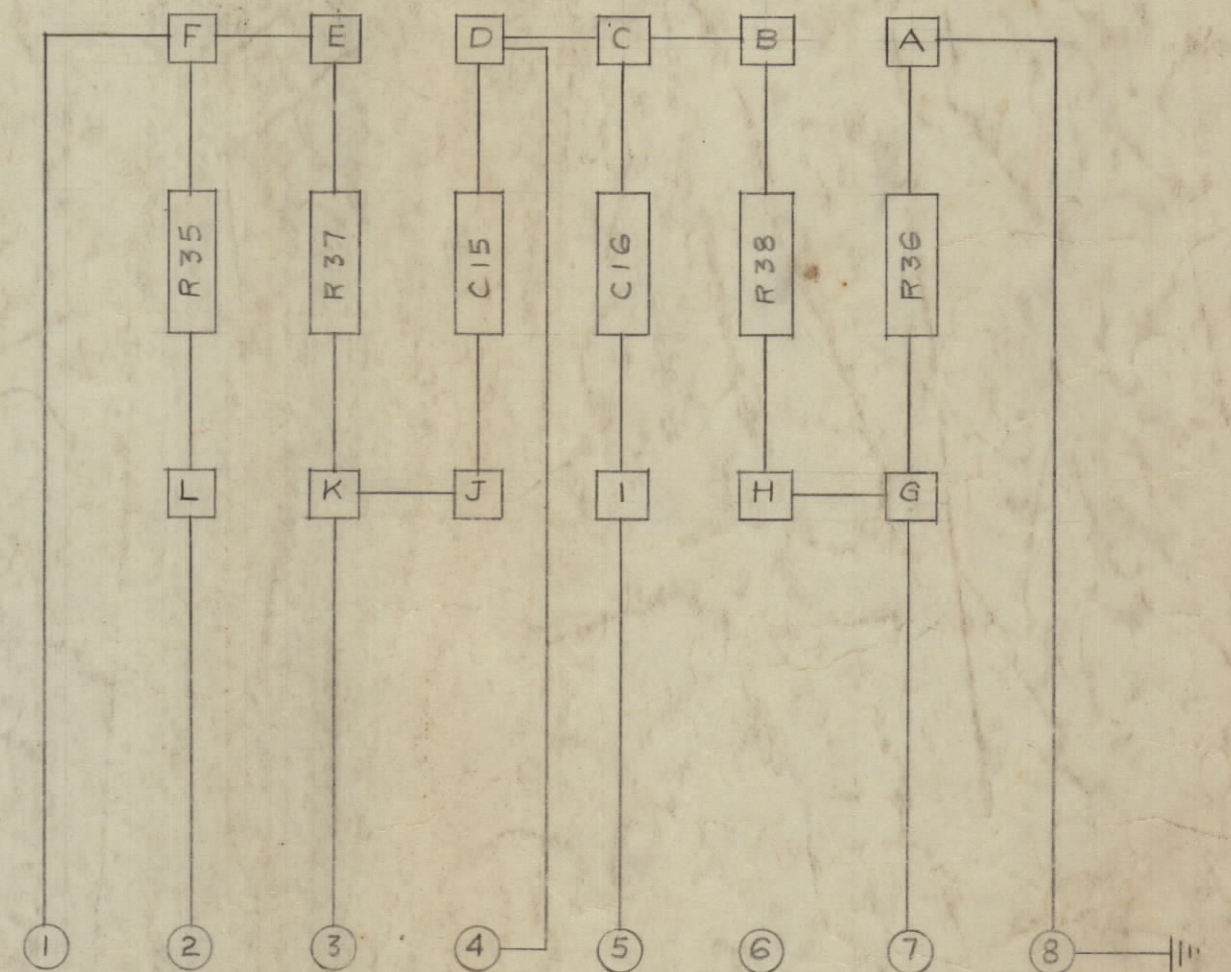


HFO

TMC NO.	FREQ.	R19/R20	R21/R22	C8/C9
NF-100-2A	765 ~	RC20GF473J	RC-109-13	CM-106-3
NF-100-2B	1275 ~	RC20GF123J	RC-109-10	CM-106-6
NF-100-2C	1785 ~	RC20GF702J	RC-109-7	CM-106-9
NF-100-2D	2295 ~	RC20GF302J	RC-109-4	CM-106-12
NF-100-2E	2805 ~	RC20GF182J	RC-109-1	CM-106-15

TMC PART NO. NF-100-3 () SEE CHART BELOW

SYM. Z3
PICTORIAL WIRING DIAGRAM

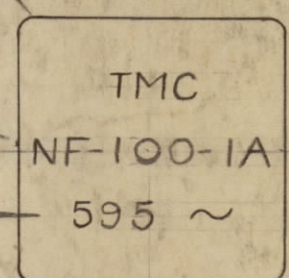


RF GAIN

TMC NO.	FREQ.	R35/R36	R37/R38	C15/C16
NF-100-3A	425 ~	—#—	RC-109-15	CM-106-1
NF-100-3B	935 ~	RC20GF223J	RC-109-12	CM-106-4
NF-100-3C	1445 ~	RC20GF902J	RC-109-9	CM-106-7
NF-100-3D	1955 ~	RC20GF222J	RC-109-6	CM-106-10
NF-100-3E	2465 ~	RC20GF202J	RC-109-3	CM-106-13

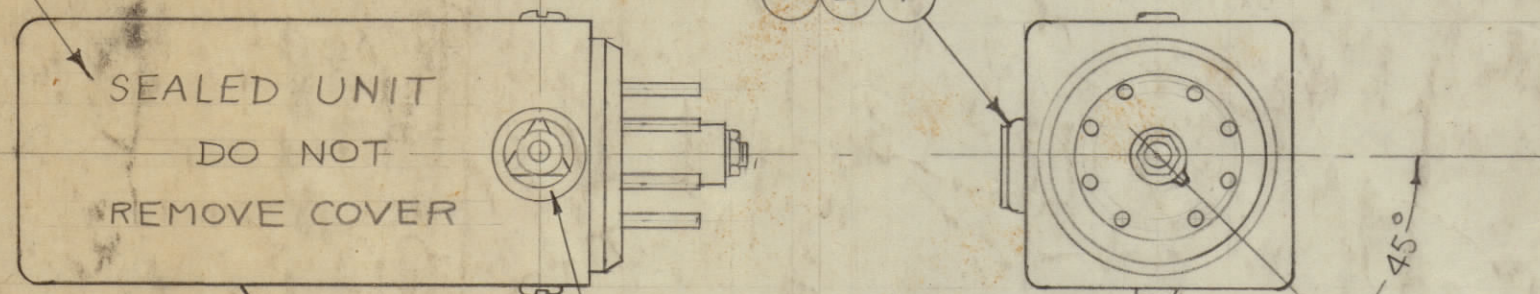
NF-100 B

STAMP CAN AS SHOWN WITH 1/8 HIGH GOTHIC LETTERS & NUMERALS



NOTE: USE PO-106-3T ON ALL MODELS USE SLEEVING WHERE NECESSARY

STAMP AS SHOWN WITH LD-164



NOTE: COVER TO BE CAUSTIC DIPPED (S-101)

WARNING: ALL RC-109 AND CM-106 PARTS TO BE BRIDGED BEFORE INSTALLATION.

X	3	GL-109	SEALING WAX	
1	2	WA-118-2	WASHER, CUP	
1	1	SCFS06328C3	SCREW, MACH.	
REQ. ITEM	PART NO.	DESCRIPTION	SYMBOL	
ff		THE TECHNICAL MATERIEL CORP. MAMARONECK, NEW YORK		
ff		FREQUENCY DETERMINING NETWORK		
ff		5 9-22-53	G.T.O.	ASE
ff		DRAWN	ELEC. DES. APP.	MECH. DES. APP.
ff		CHECKED	G.T.O.	USE
ff		FINAL APPROVAL		
ff		NF-100 B		
ff		FINISH & SPEC. NO.		

1	1785 WAS 1795 (FREQ.)	11/18/53	2	16	A.J.J.	A.J.J.
2	NOTES ADDED	10/20/53	1	14	JAL	USE
1	RC-109 WAS RR-109					
ISSUE ITEM	CHANGED FROM	DATE	CN. NO.	DRAFTS	CHECKER	ENG. APP.
TOLERANCES		SCALE: ff				
ALL OTHERS	DEC. DIM. ± FRAC. DIM. ± ANGULAR DIM. ±	DRILL, PUNCH, COMMERCIAL STOCK SIZES AND MANUFACTURERS TOLERANCES ARE NOT INCLUDED.				

RSC-1(A,B,C,D,E)	170	A-541	9-22-53
MODEL	PROJECT NO.	ASS'Y. NO.	DATE
USED ON			