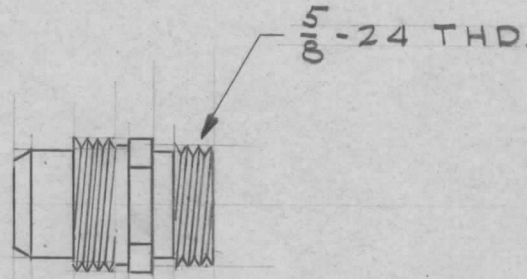
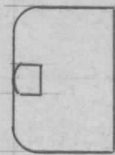
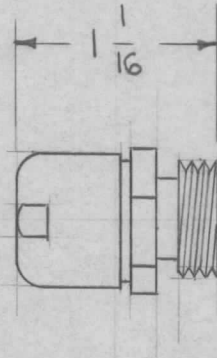


REQ. PER. UNIT	USED ON			MX-564*/U	A
	MODEL	ASS'Y. NO.	DATE		
1	ATS-2		6-18-59		



ASK Lawrence Rigano for com  
EX 239

MIL # REB49046

\* - INDICATE LATEST REV. LETTER

REQ.	ITEM	PART NO.					DESCRIPTION	SYMBOL
							THE TECHNICAL MATERIEL CORP.	
		STOCK SIZE					MAMARONECK, NEW YORK	
		BRASS					CLAMP, ARMOR	
		MATERIAL						
A	1	CLERICAL CHANGE	1/14/65	++	9f	@		
ISSUE	ITEM	CHANGED FROM	DATE	CH. NO.	DRAFTS	CHECKER	ENG. APP.	
TOLERANCES			SCALE:					
DEC. DIM. ±			MAXIMUM ALLOWABLE TOLERANCES HAVE BEEN DETERMINED AND ANY DEVIATIONS WILL BE CAUSE FOR REJECTION.					
FRAC. DIM. ±			REMOVE ALL BURRS AND SHARP EDGES					
ANGULAR DIM. ±			TYPE & TEMPER					
			HEAT TREAT. SPEC.					
			SILVER PLATED					
			FINISH & SPEC. NO.					
			DRAWN		CHECKED		FINAL APPROVAL	
			ELEC. DES. APP		MECH. DES. APP			
			6-18-59					
			AMP.					
			MX-564*/U					A

IF IT IS FOUND DESIRABLE TO CHANGE ANY TOLERANCE OR OTHER DETAIL SPECIFIED ON THIS DRAWING NOTIFY THE PURCHASER PROMPTLY.

STANDARD DRAWING

MX-564/U

MAXIMUM ALLOWABLE TOLERANCES HAVE BEEN DETERMINED AND DEVIATIONS WILL BE CAUSE FOR REJECTION. REMOVE ALL BURRS AND SHARP EDGES

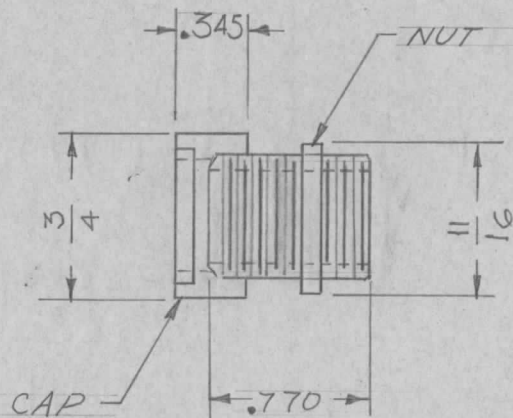
USED ON

MODEL

PROJECT NO.

ASS'Y. NO.

DATE

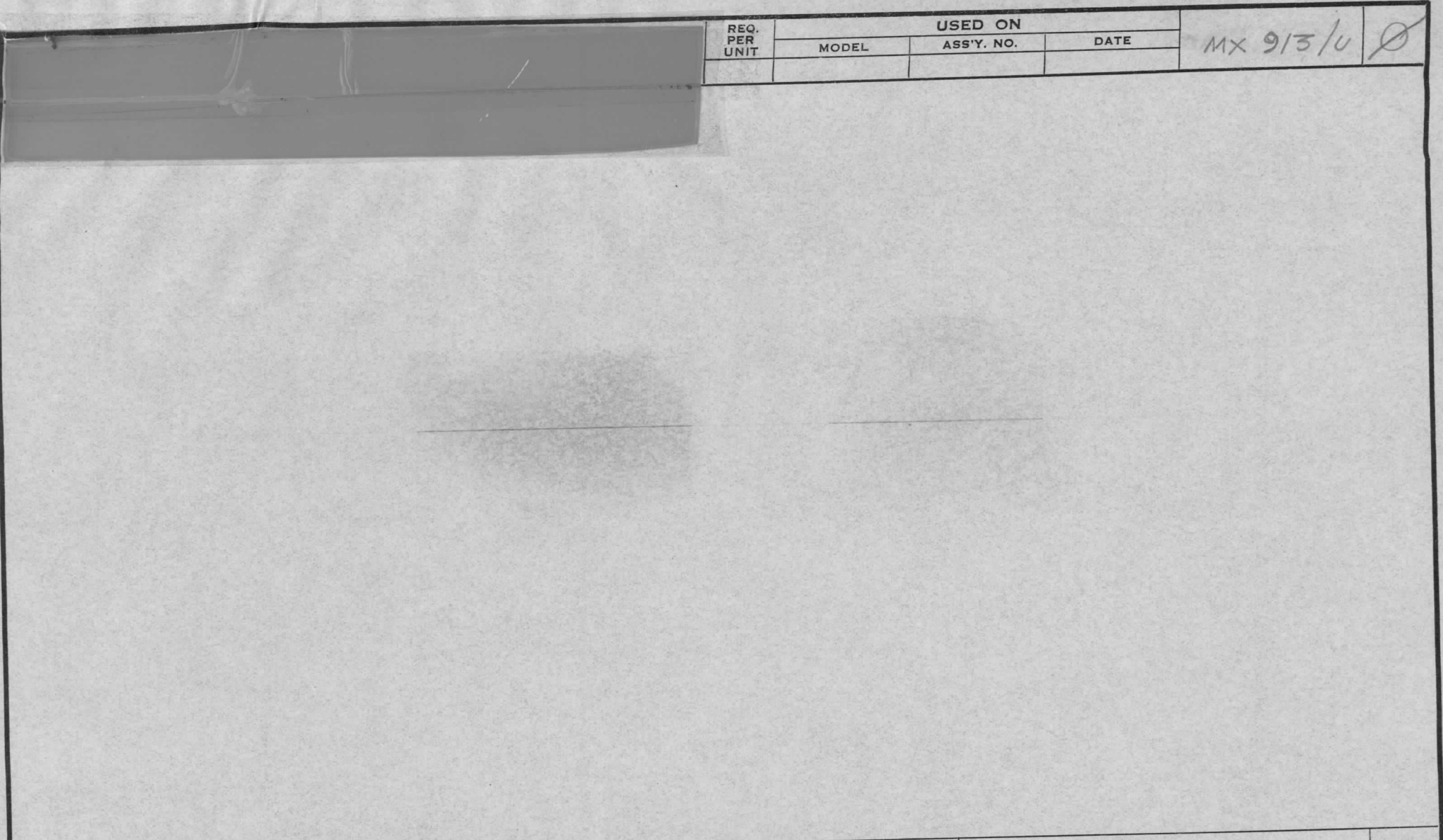


DEM. FOR REF. ONLY  
REF-NAVY DWG RE49F403

REQ.	ITEM	PART NO.	DESCRIPTION	SYMBOL
		— H —	THE TECHNICAL MATERIEL CORP. MAMARONECK, NEW YORK	
		STOCK SIZE		
		BRASS .053	CLAMP-ARMOR	
		MATERIAL WEIGHT PER PC.		
		— H —	P.B.9-17-54	
		TYPE & TEMPER		
		— H —	DRAWN	ELEC. DES. APP. MECH. DES. APP.
		HEAT TREAT. SPEC.	CHECKED	FINAL APPROVAL
		SILVER PLATED		MX-564/U
		FINISH & SPEC. NO.		

NO CHANGE READRAWN	9-15-54	12.	COB	102			
ISSUE	ITEM	CHANGED FROM	DATE	CN. NO.	DRAFTS	CHECKER	ENG. APP.

TOLERANCES		SCALE
ALL OTHERS	DEC. DIM. ± FRAC. DIM. ± ANGULAR DIM. ±	DRILL, PUNCH, COMMERCIAL STOCK SIZES AND MANUFACTURERS TOLERANCES ARE NOT INCLUDED.



REQ.  
PER  
UNIT

USED ON

MODEL

ASS'Y. NO.

DATE

MX 913/0  $\emptyset$

ISSUE ITEM	CHANGED FROM	DATE	CH. NO.	DRAFTS	CHECKER	ENG. APP.	REQ. ITEM	PART NO.	DESCRIPTION	SYMBOL		
									THE TECHNICAL MATERIEL CORP. MAMARONECK. NEW YORK			
								STOCK SIZE	CAP, COVER, N SERIES,			
								MATERIAL				
$\emptyset$	ORIGINAL RELEASE	9/26/69		2					<i>dlb</i> SKM 9/26/69			
	TOLERANCES	SCALE:						TYPE & TEMPER	HEAT TREAT. SPEC.	DRAWN	CHECKED	FINAL APPROVAL
	DEC. DIM. $\pm$ FRAC. DIM. $\pm$ ANGULAR DIM. $\pm$	MAXIMUM ALLOWABLE TOLERANCES HAVE BEEN DETERMINED AND ANY DEVIATIONS WILL BE CAUSE FOR REJECTION. REMOVE ALL BURRS AND SHARP EDGES										
								FINISH & SPEC. NO.	ELEC. DES. APP.	MECH. DES. APP.		
												MX 913/0 $\emptyset$

THE CONTENTS OF THIS DRAWING ARE THE EXCLUSIVE PROPERTY OF THE TECHNICAL MATERIEL CORP. ITS UNAUTHORIZED USE OR REPRODUCTION IN WHOLE OR IN PART IS STRICTLY FORBIDDEN.

REQ. PER UNIT

USED ON

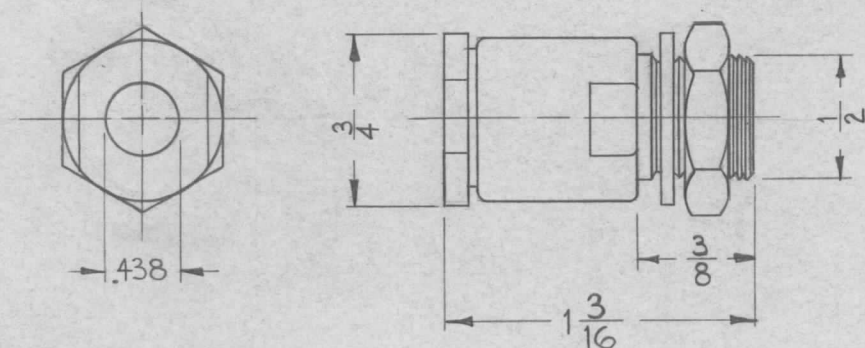
MODEL

ASS'Y. NO.

DATE

2-1-62

MX-1554A/U



							REQ.	ITEM	PART NO.	DESCRIPTION			SYMBOL
										<b>THE TECHNICAL MATERIEL CORP.</b> MAMARONECK; NEW YORK ADAPTOR, COAXIAL TERMINATION			
							STOCK SIZE						
							MATERIAL						
SYM	DESCRIPTION	DATE	CH. NO.	DRAFTS	CHECKER	ENG. APP.							
UNLESS OTHERWISE SPECIFIED: DIMENSIONS ARE IN INCHES TOLERANCES ON FRAC. $\pm 1/64$ DEC. $\pm .005$ ANGLES $\pm 1/2^\circ$		SCALE: DO NOT SCALE MAXIMUM ALLOWABLE TOLERANCES HAVE BEEN DETERMINED AND ANY DEVIATIONS WILL BE CAUSE FOR REJECTION. REMOVE ALL BURRS AND SHARP EDGES											
							TYPE & TEMPER	HEAT TREAT. SPEC.		DRAWN	CHECKED	FINAL APPROVAL	
							FINISH & SPEC. NO.			ELEC. DES. APP.	MECH. DES. APP.		MX-1554A/U