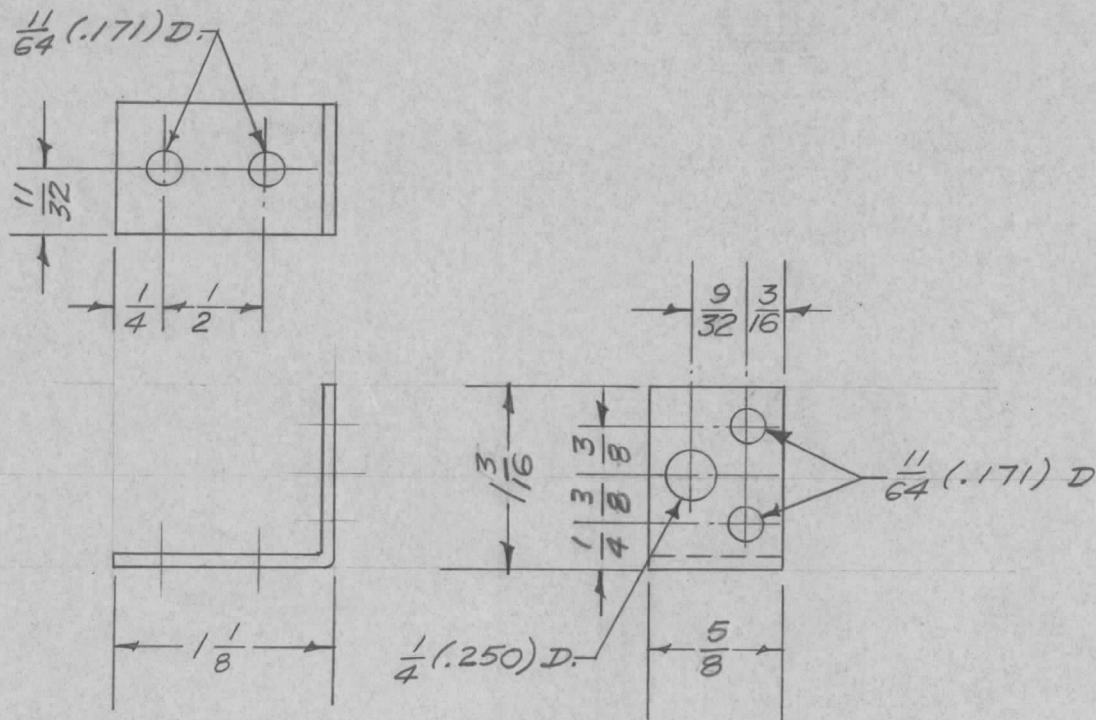


| | | | | | |
|---------------|---------|------------|--------|--------|---|
| REQ. PER UNIT | USED ON | | | MS-998 | B |
| | MODEL | ASS'Y. NO. | DATE | | |
| 2 | MSR-1 | | 1-2-57 | | |



| REQ. | ITEM | PART NO. | DESCRIPTION | | | | SYMBOL |
|--------------------|------|--------------------|---|-----------------|-----------|----------------------|----------------------|
| | | .064 THK. | THE TECHNICAL MATERIEL CORP. | | | | |
| | | STOCK SIZE | MAMARONECK, NEW YORK | | | | |
| B | 1 | S404- IRIDITE WAS | 12-8 | 1001 | P | EMN | BRACKET, RELAY MTG. |
| A | 1 | S101-CAUSTIC DIP | 9/25/57 | 1 | 16 | Handwritten initials | |
| | | ALUMINUM | | | | | |
| | | MATERIAL | | | | | |
| ISSUE | ITEM | CHANGED FROM | DATE | CH. NO. | DRAFTS | CHECKER | ENG. APP. |
| TOLERANCES | | | SCALE: | | | | |
| DEC. DIM. \pm | | | MAXIMUM ALLOWABLE TOLERANCES HAVE BEEN DETERMINED AND ANY DEVIATIONS WILL BE CAUSE FOR REJECTION. | | | | |
| FRAC. DIM. \pm | V64 | | REMOVE ALL BURRS AND SHARP EDGES | | | | |
| ANGULAR DIM. \pm | | | | | | | |
| | | 5052-H32 | — # — | | 16-1-2-57 | Handwritten initials | Handwritten initials |
| | | TYPE & TEMPER | HEAT TREAT. SPEC. | DRAWN | | CHECKED | FINAL APPROVAL |
| | | S404 IRIDITE | | | | | MS-998 B |
| | | FINISH & SPEC. NO. | ELEC. DES. APP. | MECH. DES. APP. | | | |