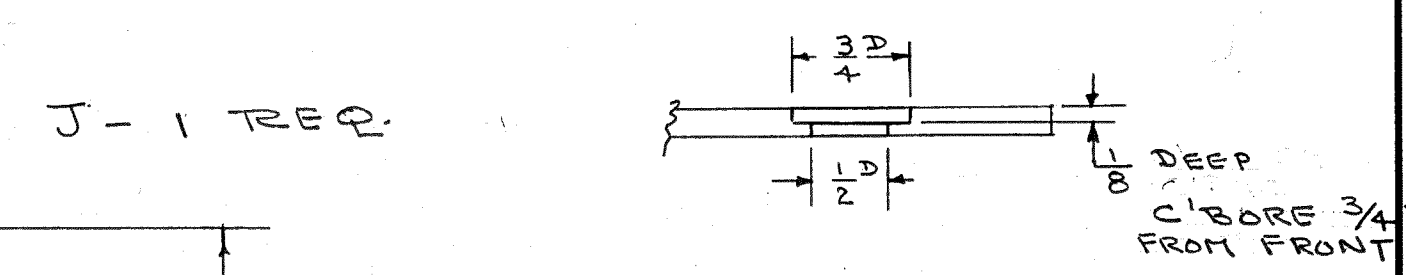
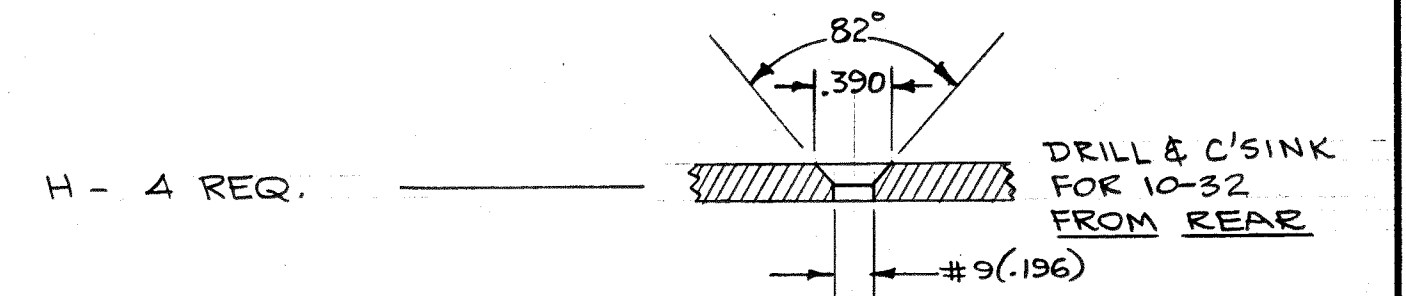
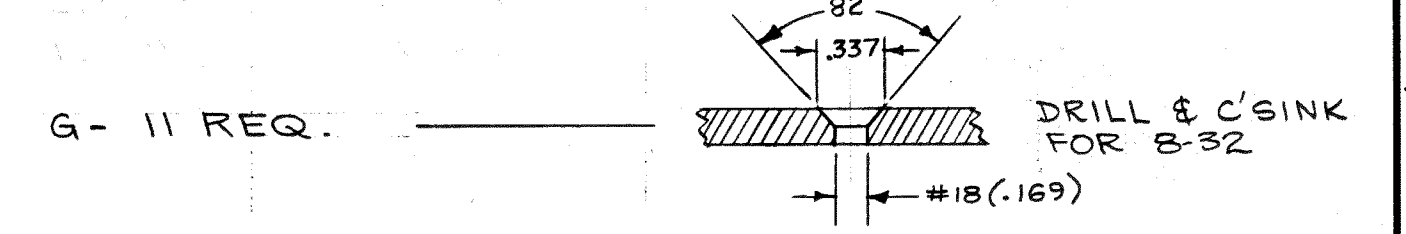


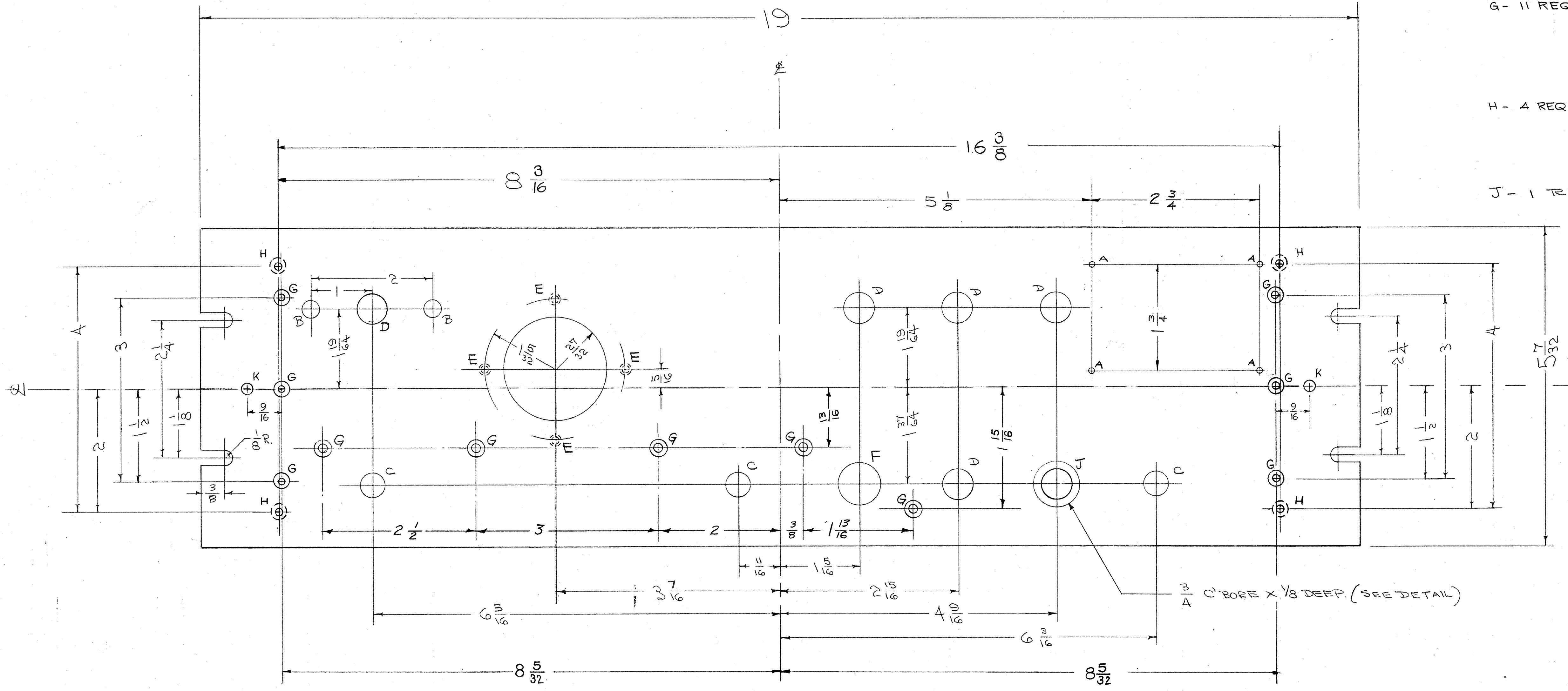
IF IT IS FOUND DESIRABLE TO CHANGE ANY TOLERANCE OR OTHER DETAIL SPECIFIED ON THIS DRAWING NOTIFY THE PURCHASER PROMPTLY.
 MAXIMUM ALLOWABLE TOLERANCES HAVE BEEN DETERMINED AND DEVIATIONS WILL BE CAUSE FOR REJECTION. REMOVE ALL BURRS AND SHARP EDGES

NOTICE TO PERSONS RECEIVING THIS DRAWING
 THE TECHNICAL MATERIEL CORPORATION claims proprietary right in the material disclosed hereon. This drawing is issued in confidence for engineering information only and may not be reproduced or used to manufacture anything shown hereon without permission from THE TECHNICAL MATERIEL CORPORATION to the user. This patent is loaned for mutual assistance and is subject to recall at any time.
 Property of:
THE TECHNICAL MATERIEL CORPORATION
 MAMARONECK, NEW YORK

- A - #4 (.078) DIA. 4 HOLES REQ.
- B - 9/32 (.281) " 2 " "
- C - 25/64 (.390) " 3 " "
- D - 1/2 (.500) " 5 " "
- E - DRILL & TAP FROM REAR 6-32 x 1/8 DP. - 4 REQ.
- F - 1/16 (.687) DIA. 1 HOLES REQ.



K - 3/16 DIA. 2 Req.



3/4 C BORE X 1/8 DEEP. (SEE DETAIL)

NOTE: FINISH - S-404 VEL. IRIDITE
 FRONT & EDGES ONLY { S114 ZINC CHROMATE PRIMER
 S115 SMOOTH GREY ENAMEL OR PRIME & PAINT TO CUSTOMER'S SPECIFICATIONS

ISSUE	ITEM	CHANGED FROM	DATE	CH. NO.	DRAWN	CHECKER	ENG. APP.
G	1	ØK HOLES ADDED	7-6-61	5161	B-D-L		
F	2	ØH HOLES RELOCATED	7-6-61	4050	RU		
I	1	ØG METG. HOLES RELOCATED					
E	1	S-404 VEL. IRIDITE FINISH	7-8-57	1001	AG		EMM
D	1	S-101 CAUSTIC DIP	9-15-58	4			
C	1	FOUR 1/4" (#4) HOLES RELOCATED					
C	1	C BORE DETAIL ADDED	7-14-57	3	AG		
B	1	CHART DELETED	8-22-57	2	EC		
A	1	CHART ADDED	7-24-59	1			

TOLERANCES: ALL DEC. DIM. ± FRACTIONAL DIM. ± 1/64 ANGULAR DIM. ±
 SCALE: DRILL, PUNCH, COMMERCIAL STOCK SIZES AND MANUFACTURERS TOLERANCES ARE NOT INCLUDED.

REF. DWG. LD-306

REQ. PER UNIT	MODEL	PROJECT NO.	ASSY. NO.	DATE	SYMBOL																												
1	MSR-1,3			9-19-56																													
<table border="1"> <thead> <tr> <th>REQ. ITEM</th> <th>PART NO.</th> <th>DESCRIPTION</th> <th>SYMBOL</th> </tr> </thead> <tbody> <tr> <td>3/16 THICK</td> <td></td> <td>THE TECHNICAL MATERIEL CORP. MAMARONECK, NEW YORK</td> <td></td> </tr> <tr> <td>ALUMINUM</td> <td></td> <td>PANEL, FRONT</td> <td></td> </tr> <tr> <td>MATERIAL WEIGHT PER PC</td> <td></td> <td>MSR-1,3</td> <td></td> </tr> <tr> <td>TYPE & TEMPER</td> <td>S-404 S114/S115</td> <td></td> <td></td> </tr> <tr> <td>HEAT TREAT. SPEC.</td> <td></td> <td></td> <td></td> </tr> <tr> <td>FINISH & SPEC. NO.</td> <td></td> <td></td> <td></td> </tr> </tbody> </table>					REQ. ITEM	PART NO.	DESCRIPTION	SYMBOL	3/16 THICK		THE TECHNICAL MATERIEL CORP. MAMARONECK, NEW YORK		ALUMINUM		PANEL, FRONT		MATERIAL WEIGHT PER PC		MSR-1,3		TYPE & TEMPER	S-404 S114/S115			HEAT TREAT. SPEC.				FINISH & SPEC. NO.				
REQ. ITEM	PART NO.	DESCRIPTION	SYMBOL																														
3/16 THICK		THE TECHNICAL MATERIEL CORP. MAMARONECK, NEW YORK																															
ALUMINUM		PANEL, FRONT																															
MATERIAL WEIGHT PER PC		MSR-1,3																															
TYPE & TEMPER	S-404 S114/S115																																
HEAT TREAT. SPEC.																																	
FINISH & SPEC. NO.																																	
					MS-989 G																												

MS-989 G