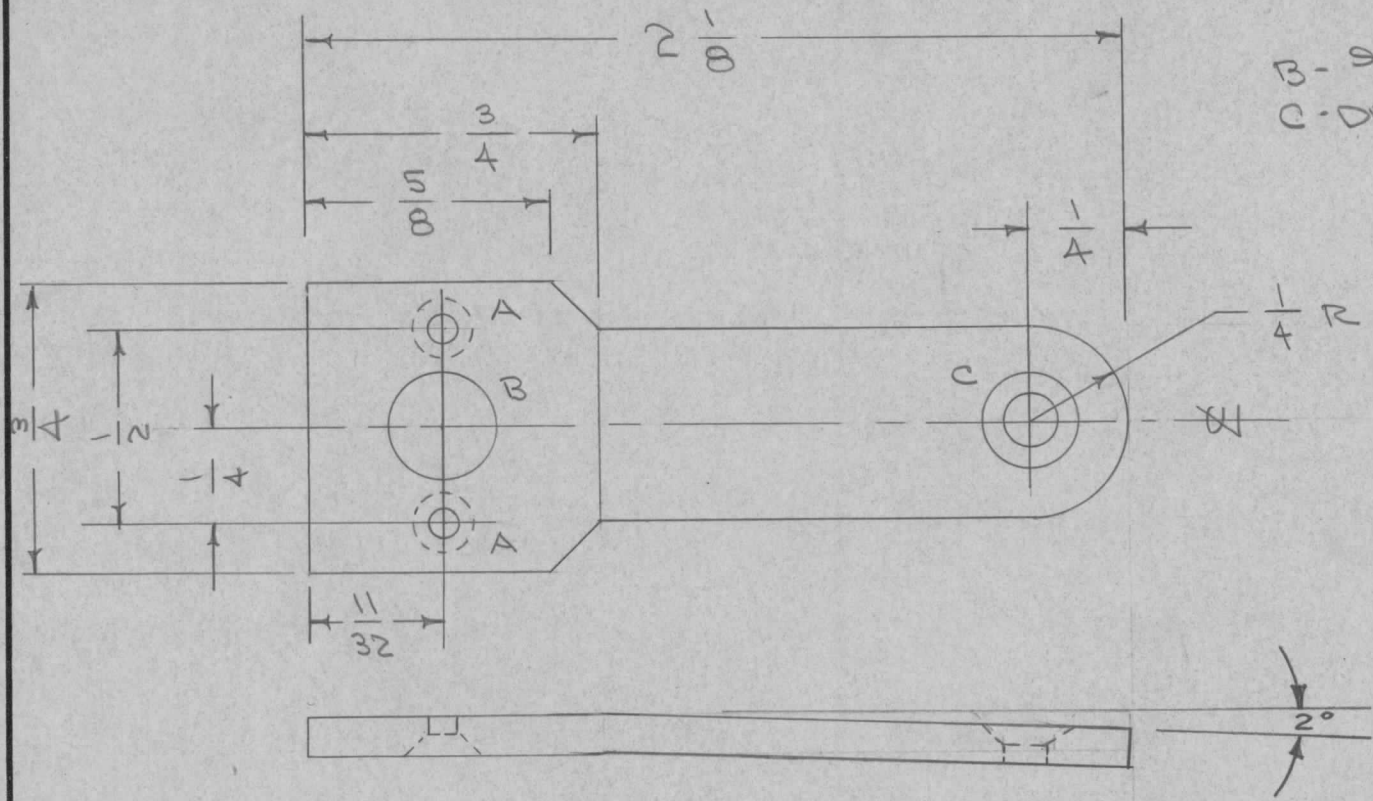


REQ. PER UNIT	610	USED ON		MS-983	C
	MODEL	ASS'Y. NO.	DATE		
1	RTF		8-31-56		

A-DRILL & C'SINK 3-48 FHS
2 REQ.
B- 9/32 (.281) DIA. 1 "
C-DRILL & C'SINK 8-32 FHS.
1 REQ.



ISSUE	ITEM	CHANGED FROM	DATE	CH. NO.	DRAFTS	CHECKER	ENG. APP.	REQ. ITEM	PART NO.	DESCRIPTION	SYMBOL				
C	1	Plating Thk. Added	10/15/57	3	16	JAD	[Signature]	.081	STOCK SIZE	THE TECHNICAL MATERIEL CORP. MAMARONECK, NEW YORK	LEVER, CAP. INC. SWITCH P/A RTF				
B	1	2° Bend Added	12/13/56	2	16	JAD	[Signature]	BRASS	MATERIAL						
A	1	MAT. WAS ALUMINUM	9/21/56	1	JAD	[Signature]	[Signature]	HALF HARD	8/31/56	JAD	[Signature]				
TOLERANCES			SCALE:			TYPE & TEMPER		HEAT TREAT. SPEC.		DRAWN		CHECKED		FINAL APPROVAL	
DEC. DIM. ±			MAXIMUM ALLOWABLE TOLERANCES HAVE			S-135 NICKEL PLATE				[Signature]		MS-983		C	
FRAC. DIM. ± 1/64			BEEN DETERMINED AND ANY DEVIATIONS			.0003				[Signature]					
ANGULAR DIM. ±			WILL BE CAUSE FOR REJECTION.			FINISH & SPEC. NO.				ELEC. DES. APP.		MECH. DES. APP.			
			REMOVE ALL BURRS AND SHARP EDGES												