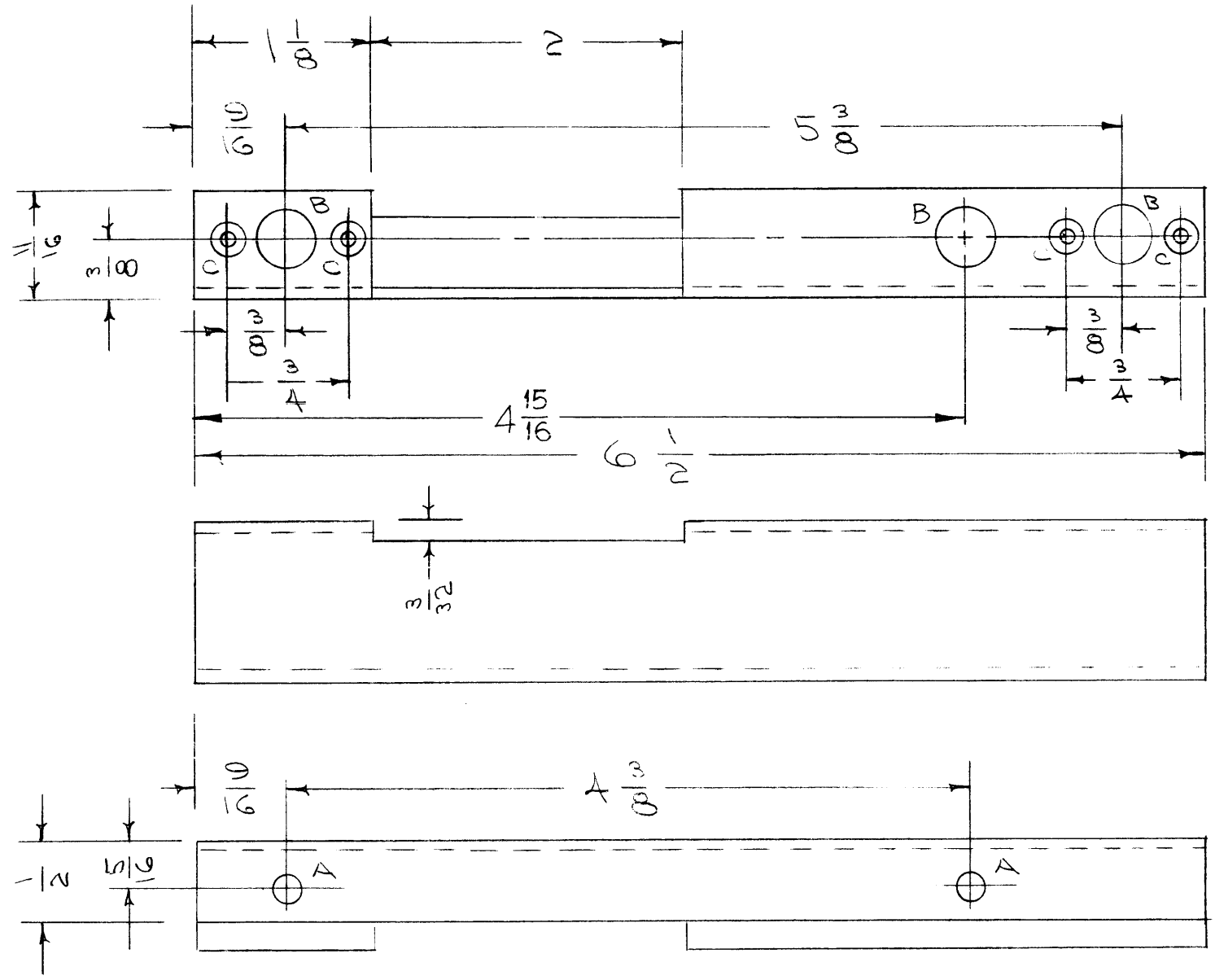
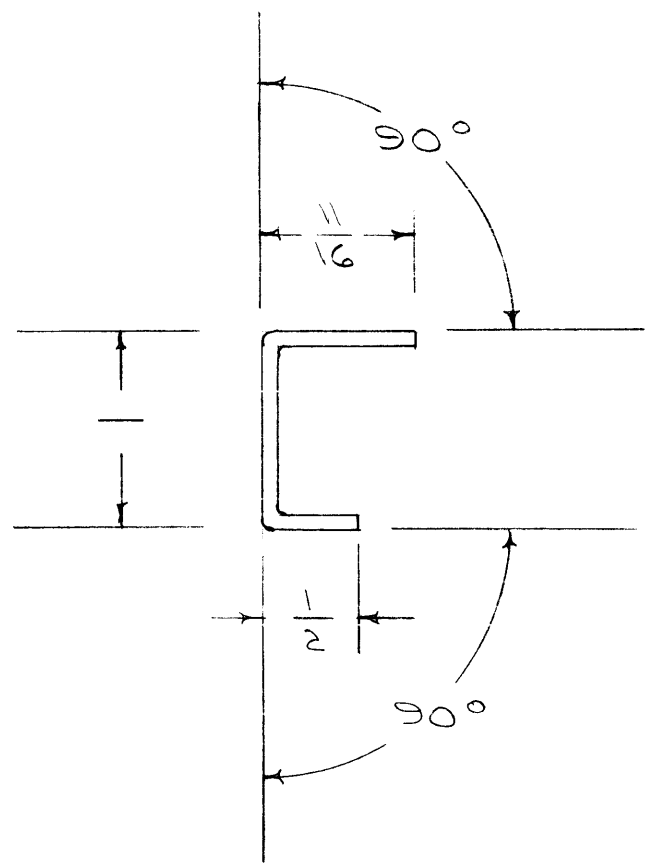


MS-971 B



A - 3/16 (.1875) DIA. 2 HOLES REQ.
 B - 3/8 (.375) " 3 " " "
 C - DRILL & CSINK 4 " " "
 # 3 F.H.S.



This drawing is for informational purposes only and may not be used or used to manufacture anything shown herein without permission from THE TECHNICAL MATERIEL CORPORATION to the user. This drawing is loaned for mutual assistance and is subject to recall at any time.

Property of:
 THE TECHNICAL MATERIEL CORPORATION
 MAMARONECK, NEW YORK

ISSUE	ITEM	CHANGED FROM	DATE	CH. NO.	DRAFTS	CHECKER	ENG. APP.
B	1	① "B" Hole Added	9-6-60	2923	J.C.B.		
A	1	S-404 WAS S-101	12/14/59	1001	AB		EMN

TOLERANCES		SCALE:	
DEC. DIM. ±		MAXIMUM ALLOWABLE TOLERANCES HAVE BEEN DETERMINED AND ANY DEVIATIONS WILL BE CAUSE FOR REJECTION.	
FRAC. DIM. ± 1/64		REMOVE ALL BURRS AND SHARP EDGES	
ANGULAR DIM. ±			

1	RTF-2	MAS/ESC		11-10-58
1	RTF			8-23-56
REQ. PER UNIT	MODEL	PROJECT NO.	ASS'Y. NO.	DATE

REQ. ITEM	PART NO.	DESCRIPTION	SYMBOL
	.064	THE TECHNICAL MATERIEL CORP.	
	STOCK SIZE	MAMARONECK, NEW YORK	
	ALUMINUM	COVER SUPPORT, BOTTOM	
	MATERIAL	OVEN	RTF
5052 H32		EDD 8/23/56	
	TYPE & TEMPER	DRAWN	CHECKED
	HEAT TREAT. SPEC.		FINAL APPROVAL
	S-404 YELLOW IRIDITE		
	FINISH & SPEC. NO.	ELEC. DES. APP.	MECH. DES. APP.
			MS-971 B