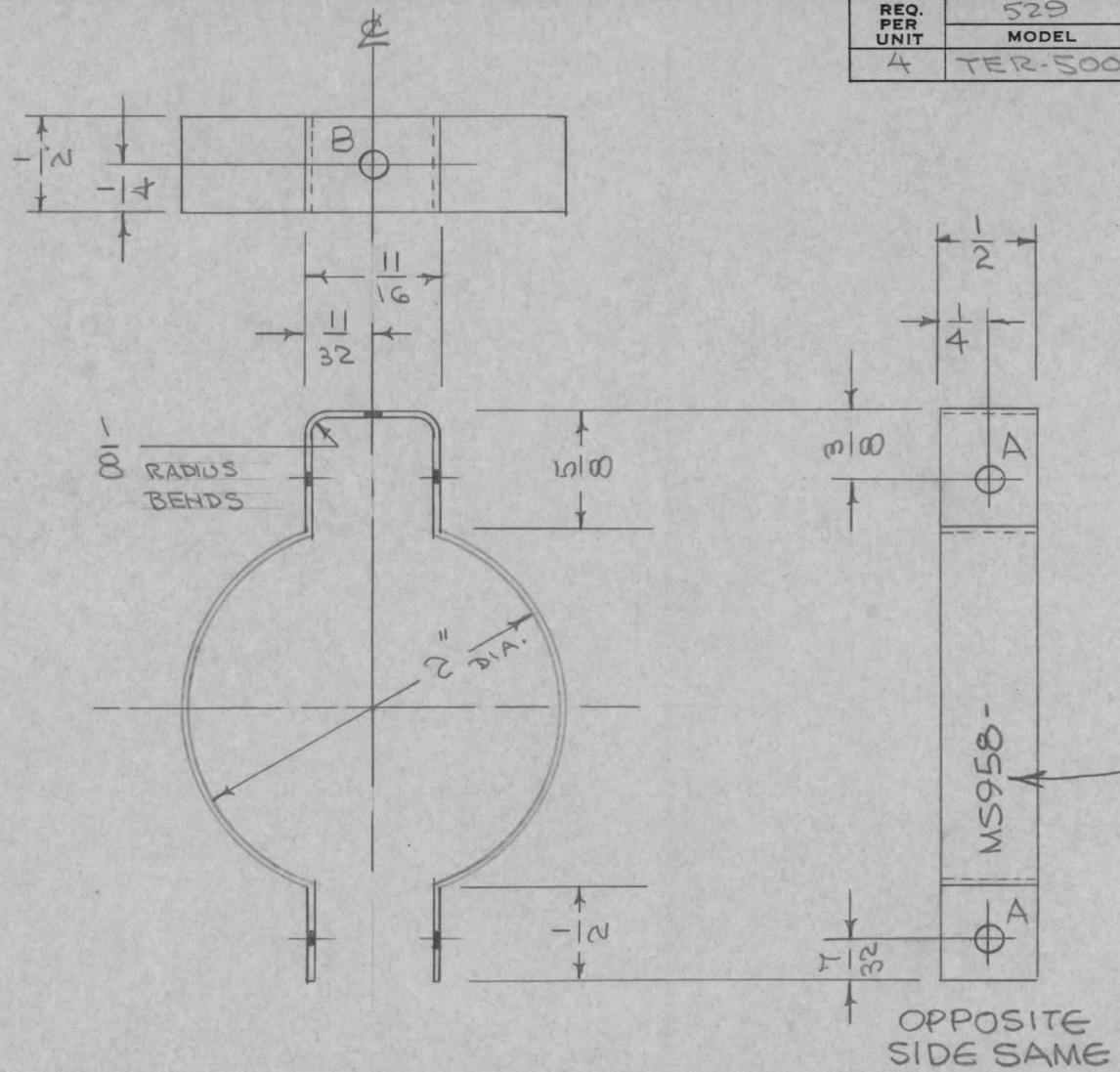


REQ. PER UNIT	529		USED ON		M9 958	A
	MODEL	ASS'Y. NO.	DATE			
4	TER-500		8-20-56			



A HOLES - 5/32 (.156) DIA.
4 REQ.
B HOLES - 3/16 (.187) DIA
1 REQ

MARK TMC PART NO.
1/8 HIGH GOTHIC W/LATEST
REVISION LETTER.

ISSUE	ITEM	CHANGED FROM	DATE	CH. NO.	DRAFTS	CHECKER	ENG. APP.	REQ. ITEM	PART NO.	DESCRIPTION	SYMBOL		
									.023 THK	THE TECHNICAL MATERIEL CORP. MAMARONECK, NEW YORK			
									STOCK SIZE				
									COPPER		RESISTOR CLAMP		
										TER-500			
A		'B' HOLE WAS 'A' ADD TMC NO.	2.3.67	17778	LHW	<i>[Signature]</i>							
									MATERIAL				
									BERYLUM 10	008/20/56	<i>[Signature]</i>		
											<i>[Signature]</i>		
									TYPE & TEMPER	HEAT TREAT. SPEC.	DRAWN	CHECKED	FINAL APPROVAL
									SILVER PLATE .0004		<i>[Signature]</i>	<i>[Signature]</i>	MS-958
									FINISH & SPEC. NO.	ELEC. DES. APP.	MECH. DES. APP.		A

DEC. DIM. ±
FRAC. DIM. ± Y64
ANGULAR DIM. ±

SCALE:
MAXIMUM ALLOWABLE TOLERANCES HAVE
BEEN DETERMINED AND ANY DEVIATIONS
WILL BE CAUSE FOR REJECTION.
REMOVE ALL BURRS AND SHARP EDGES