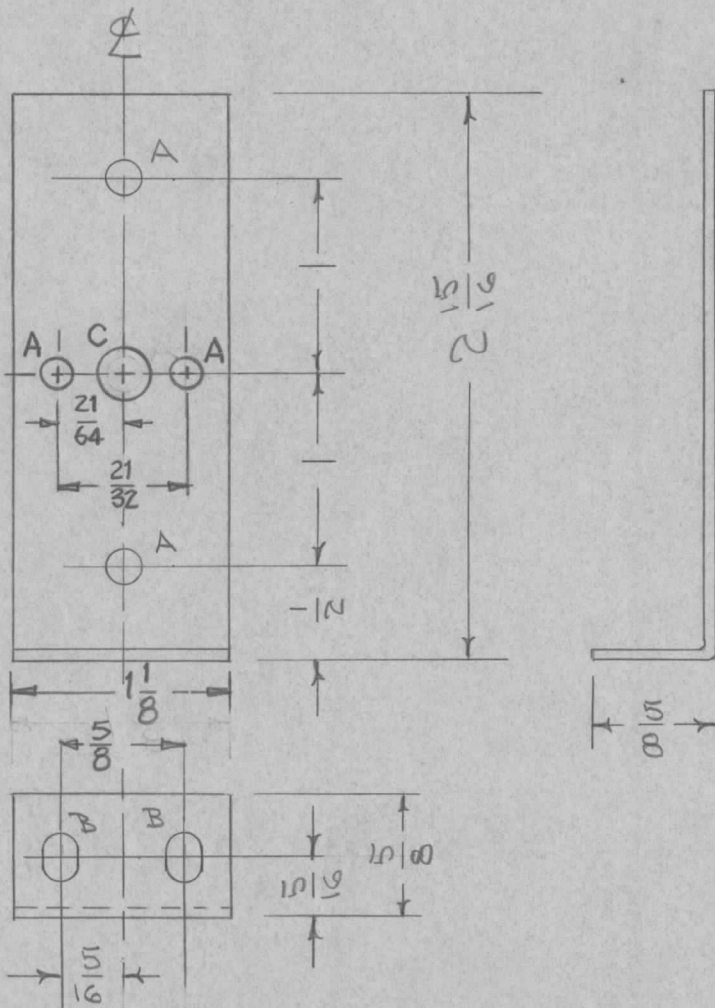


IF IT IS FOUND DESIRABLE TO CHANGE ANY TOLERANCE OR OTHER DETAIL SPECIFIED ON THIS DRAWING NOTIFY THE PURCHASER PROMPTLY.

MAXIMUM ALLOWABLE TOLERANCES HAVE BEEN DETERMINED AND DEVIATIONS WILL BE CAUSE FOR REJECTION. REMOVE ALL BURRS AND SHARP EDGES

MS-953 B

REQ PER UNIT	USED ON			
	MODEL	PROJECT NO.	ASS'Y. NO.	DATE
1	GPR-90	297		7-24-56
1	GPR-90-RXD			5-4-60



A - 1/64 (.171) DIA. 4 HOLES REQ.  
 B - 3/16 x 1/4 2 SLOTS "  
 C - 9/32 (.281) DIA 1 HOLE REQ

REQ.	ITEM	PART NO.	DESCRIPTION	SYMBOL
		.064	THE TECHNICAL MATERIEL CORP.	
		STOCK SIZE	MAMARONECK. NEW YORK	
		ALUMINUM	BRACKET, COND. WRAP	
		MATERIAL WEIGHT PER PC.	AROUND GPR-90	
		5052 H32	COND 7/24/56	
		TYPE & TEMPER	###	
			DRAWN	ELEC. DES. APP. MECH. DES. APP.
			HEAT TREAT. SPEC.	
		S404-IRIDITE	CHECKED	FINAL APPROVAL
		FINISH & SPEC. NO.		MS-953 B

B	1	(1) 1/4" HOLE AND (1) 1/2" HOLE ADDED	5/4/60		DM	file	
A	1	S404 IRIDITE WAS S101 CAUSTIC DIP	12-8 59	1001	SP		EMN
ISSUE	ITEM	CHANGED FROM	DATE	CN. NO.	DRAFTS	CHECKER	ENG. APP.

TOLERANCES

SCALE

ALL OTHERS

DEC. DIM. ±  
 FRAC. DIM. ± 1/64  
 ANGULAR DIM. ±

DRILL, PUNCH, COMMERCIAL STOCK SIZES AND MANUFACTURERS TOLERANCES ARE NOT INCLUDED.