

REQ. PER UNIT	271	USED ON		MS-951	A
	MODEL	ASS'Y. NO.	DATE		
1	CAB/FRAME		6-1-56		

NOTE - FINISH

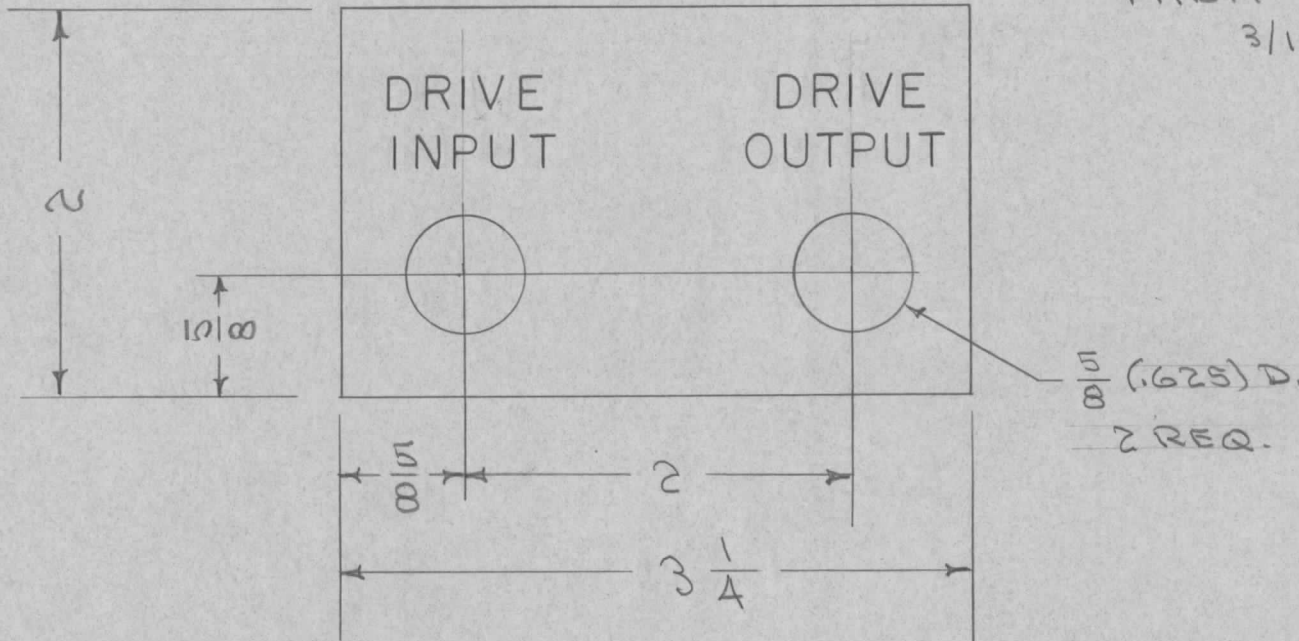
S-404- IRIDITE DIP

S-114 ZINC CHROMATE PRIMER

S-220 RCAF BLUE GRAY ENAMEL

THEN - STAMP AS SHOWN

3/16 HIGH WHITE GOTHIC



TO BE SUPPLIED
 WITH THE PARTS
 LISTED FOR
 THIS PROJECT
 (CONTRACT NO. OR PART NO.
 WHICH ARE IDENTICAL)

ISSUE	ITEM	CHANGED FROM	DATE	CH. NO.	DRAFTS	CHECKER	ENG. APP.	REQ. ITEM	PART NO.	DESCRIPTION	SYMBOL	
									.040	THE TECHNICAL MATERIEL CORP. MAMARONECK, NEW YORK	IDENTIFICATION PLATE, J506 J507 GPT-150	
									STOCK SIZE			
A	1	S404 IRIDITE. WAS S101 CAUSTIC DIP	12-8 59	1001	P		EMN		ALUMINUM			
									MATERIAL			
TOLERANCES								SCALE:				
DEC. DIM. ± FRAC. DIM. ± 1/64 ANGULAR DIM. ±								MAXIMUM ALLOWABLE TOLERANCES HAVE BEEN DETERMINED AND ANY DEVIATIONS WILL BE CAUSE FOR REJECTION. REMOVE ALL BURRS AND SHARP EDGES				
								5052 H32		CDD 6/1/56	JND	A. J. J.
								TYPE & TEMPER	HEAT TREAT. SPEC.	DRAWN	CHECKED	FINAL APPROVAL
								SEE NOTE		OVP	WDC	MS-951 A
								FINISH & SPEC. NO.	ELEC. DES. APP.	MECH. DES. APP.		