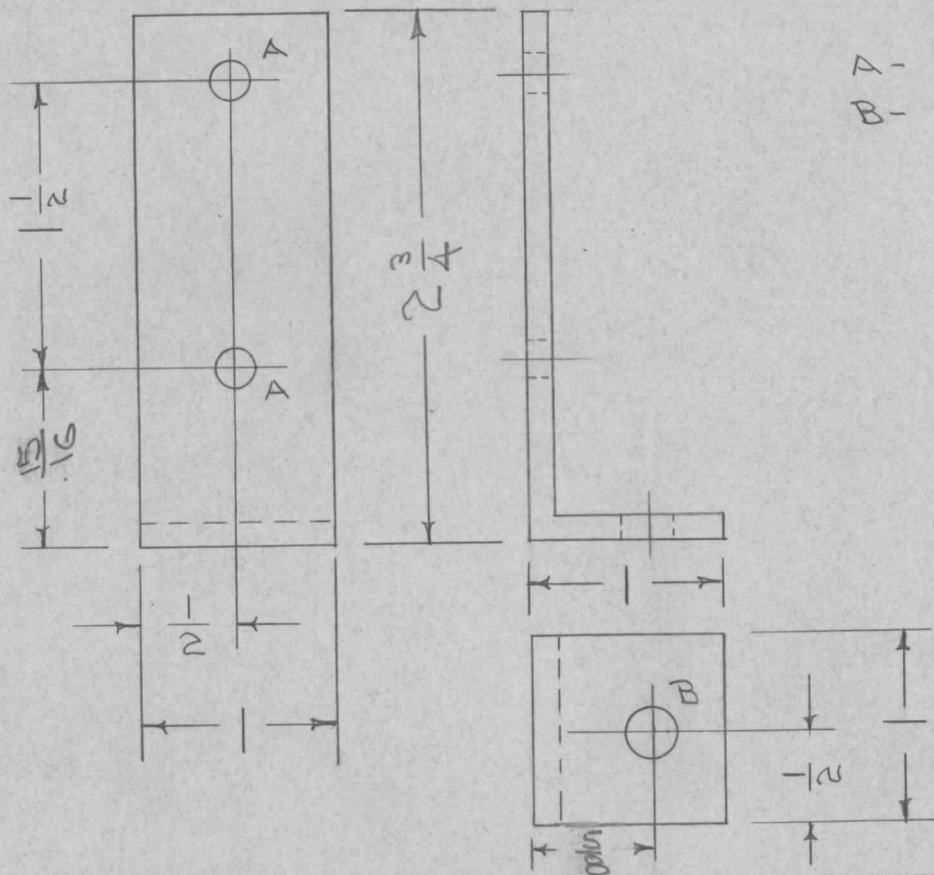


REQ. PER UNIT	E-500-P	USED ON		MS-928	A
	MODEL	ASS'Y. NO.	DATE		
2	A 959		4-20-56		



A - 3/16 (.187) DIA. 2 REQ.  
 B - 1/4 (.250) " 1 "

REQ. ITEM	PART NO.	DESCRIPTION	SYMBOL
	.125 THK.	THE TECHNICAL MATERIEL CORP. MAMARONECK, NEW YORK	BRACKET, XFK SUPPORT A959
	STOCK SIZE		
	ALUMINIUM		
	MATERIAL		
A 1	5404 - IRIDITE WAS S101 - CAUSTIC DIP	12-7 59	1001 P 16 EMN
ISSUE ITEM	CHANGED FROM	DATE	CH. NO. DRAFTS CHECKER ENG. APP.
TOLERANCES		SCALE:	
DEC. DIM. $\pm$		MAXIMUM ALLOWABLE TOLERANCES HAVE BEEN DETERMINED AND ANY DEVIATIONS WILL BE CAUSE FOR REJECTION.	
FRAC. DIM. $\pm$ 1/64		REMOVE ALL BURRS AND SHARP EDGES	
ANGULAR DIM. $\pm$			
6063 T5		CDP 4/20/56	FAIR
TYPE & TEMPER		HEAT TREAT. SPEC.	DRAWN
S404 IRIDITE			CHECKED
FINISH & SPEC. NO.		ELEC. DES. APP.	MECH. DES. APP.
			FINAL APPROVAL
			MS-928 A