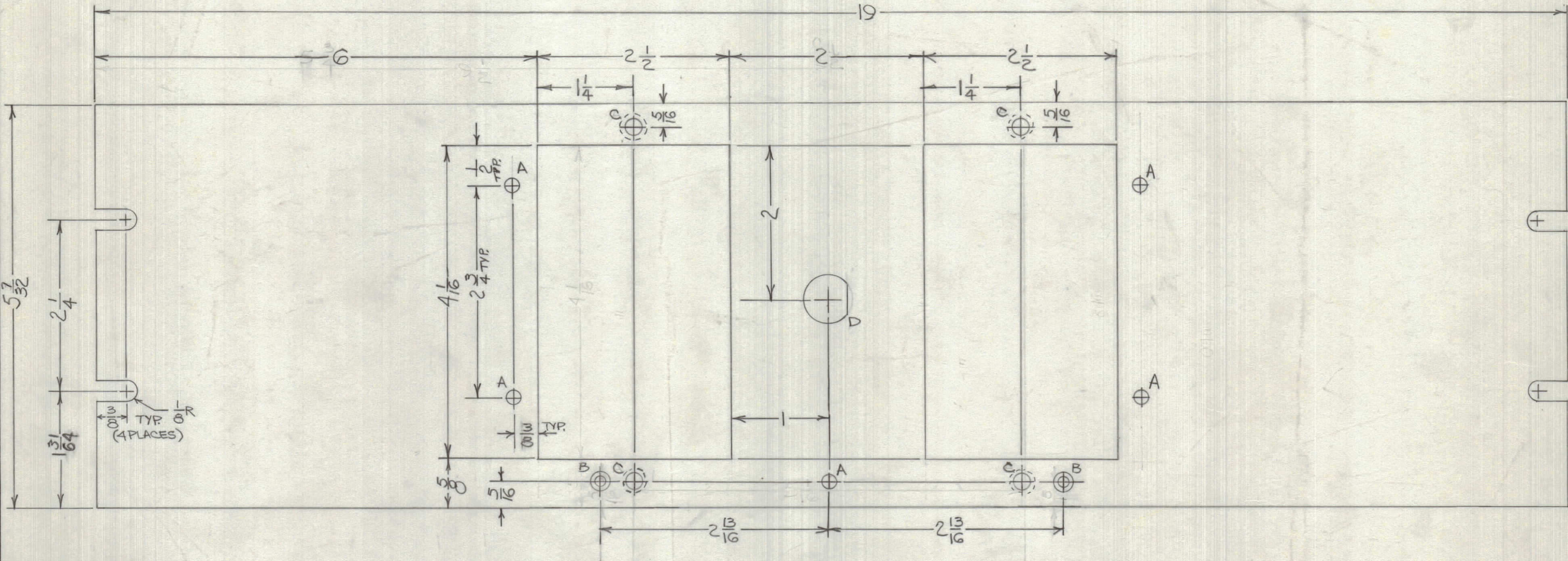


ENGINEERING SKETCH

NOT FOR PRODUCTION

REVISIONS							
ZONE	LTR	DESCRIPTION	DATE	E.M.N.NO	DRAFT	CHKD	APPD
	1	ORIGINAL RELEASE FOR PRODUCTION	8/27/69	Ø	CG		JLQ



FRONT VIEW SHOWN

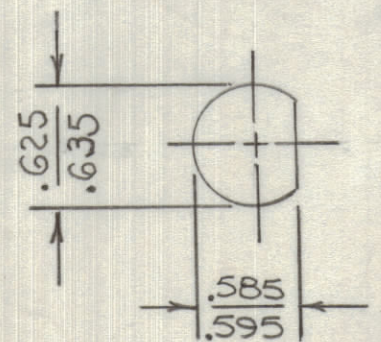
(MOUNT ITEM 1 IN ALL 4 "C" HOLES ON REAR OF PANEL)

- "A" HOLES - 1/64 DIA. - 1 REQ.
- "B" HOLES - 632C SINK - 2 REQ.
- "C" HOLES - .221 ~ .224 DIA - 4 REQ.
- "D" HOLE - 1 REQ. - SEE DETAIL

FINISH NOTES:

- S404 - IRIDITE 14-2 AL-COAT.
- S114 - ZINC CHROMATE PRIMER } FRONT AND EDGES ONLY
- S115 - SMOOTH GRAY ENAMEL } OR PRIME AND PAINT PER CUSTOMER'S SPECIFICATIONS

"D" DETAIL



QTY. REQ.	ITEM	PART NO.	DESCRIPTION	SYMBOL
4	1	NT129-0832-6	NUT, ROUND, SPLINE	C

FINAL APPROVAL		DATE	THE TECHNICAL MATERIEL CORP.	
A. PETROCCA		5-20-69	MAMARONECK, NEW YORK	
MECH. DES.		DATE	PANEL, FRONT, ±12V. P.S.	
A. PETROCCA		11-68		
ELECT. DES.		DATE		
CHECKED		DATE		
DRAWN		DATE		
A. PETROCCA		11-68		

QTY / UNIT	MODEL USED ON	ASS'Y NO.
1	SPT 3KVHF	APM41
APPLICATION		
CODE		

UNLESS OTHERWISE SPECIFIED DIMENSIONS ARE IN INCHES AND INCLUDE CHEMICALLY APPLIED OR PLATED FINISHES

TOLERANCES ON

DECIMALS	FRACTIONS
.X ± .05	± 1/64
.XX ± .01	ANGLES
.XXX ± .005	± 0° - 30'

MATERIAL
1/8 ALUM. 2024-T3

FINISH
SEE FINISH NOTES

SIZE	CODE IDENT. NO.	DWG NO.	ISSUE
C	82679	MS8460	Ø