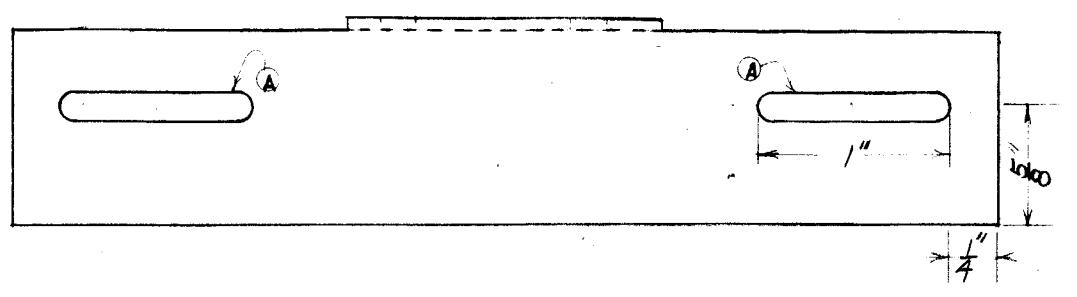
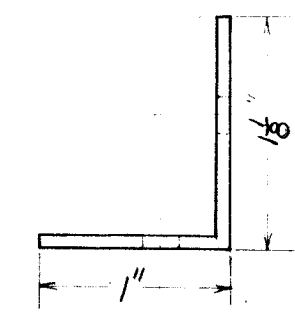
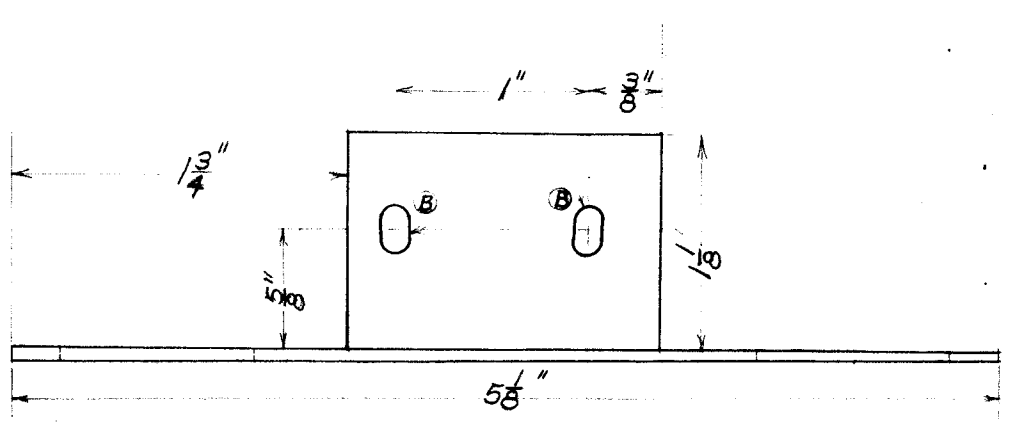


REVISIONS						
ZONE	LTR	DESCRIPTION	DATE	E.M.N.NO	DRAFT	CHKD APPD
	Ø	ORIG REL FOR PRÖD	1-3-69	H	GE	JHE



HOLES

Ⓐ	$\frac{5}{32} \times 1'' - 2$
Ⓑ	$\frac{5}{32} \times \frac{1}{4}'' - 2$



2	SPT-3KVHF	AX 8080
2	SPT-3KVHF	AX 8081
QTY / UNIT	MODEL USED ON	ASS'Y NO.

APPLICATION	
CODE	

NOTICE TO PERSONS RECEIVING THIS DRAWING
 THE TECHNICAL MATERIEL CORPORATION claims proprietary right in the material disclosed hereon. This drawing is issued in confidence for engineering information only and may not be reproduced or used to manufacture anything shown hereon without permission from THE TECHNICAL MATERIEL CORPORATION to the user. This drawing is loaned for mutual assistance and is subject to recall at any time.

UNLESS OTHERWISE SPECIFIED DIMENSIONS ARE IN INCHES AND INCLUDE CHEMICALLY APPLIED OR PLATED FINISHES

DECIMALS	FRACTIONS
.X ± .05	TOLS. 1/64
.XX ± .01	ANGLES 0° - 30'
.XXX ± .005	

MATERIAL 5052-H32
 ALUM. 063

FINISH
 5404

REQ'D	ITEM	PART NUMBER	DESCRIPTION	SYM.
LIST OF MATERIAL				

FINAL APPROVAL	DATE
<i>[Signature]</i>	1/3/69
MECH. DES.	DATE
<i>[Signature]</i>	1/3/69
ELECT. DES.	DATE
CHECKED	DATE
<i>[Signature]</i>	1-3-69
DRAWN	DATE
C. Grob	11/5/68

THE TECHNICAL MATERIEL CORP.
 MAMARONECK, NEW YORK

BRACKET SWITCH

SIZE	CODE IDENT. NO.	DWG NO.	ISSUE
B	82679	MS 8443	Ø
SCALE	SHEET 1 OF 1		