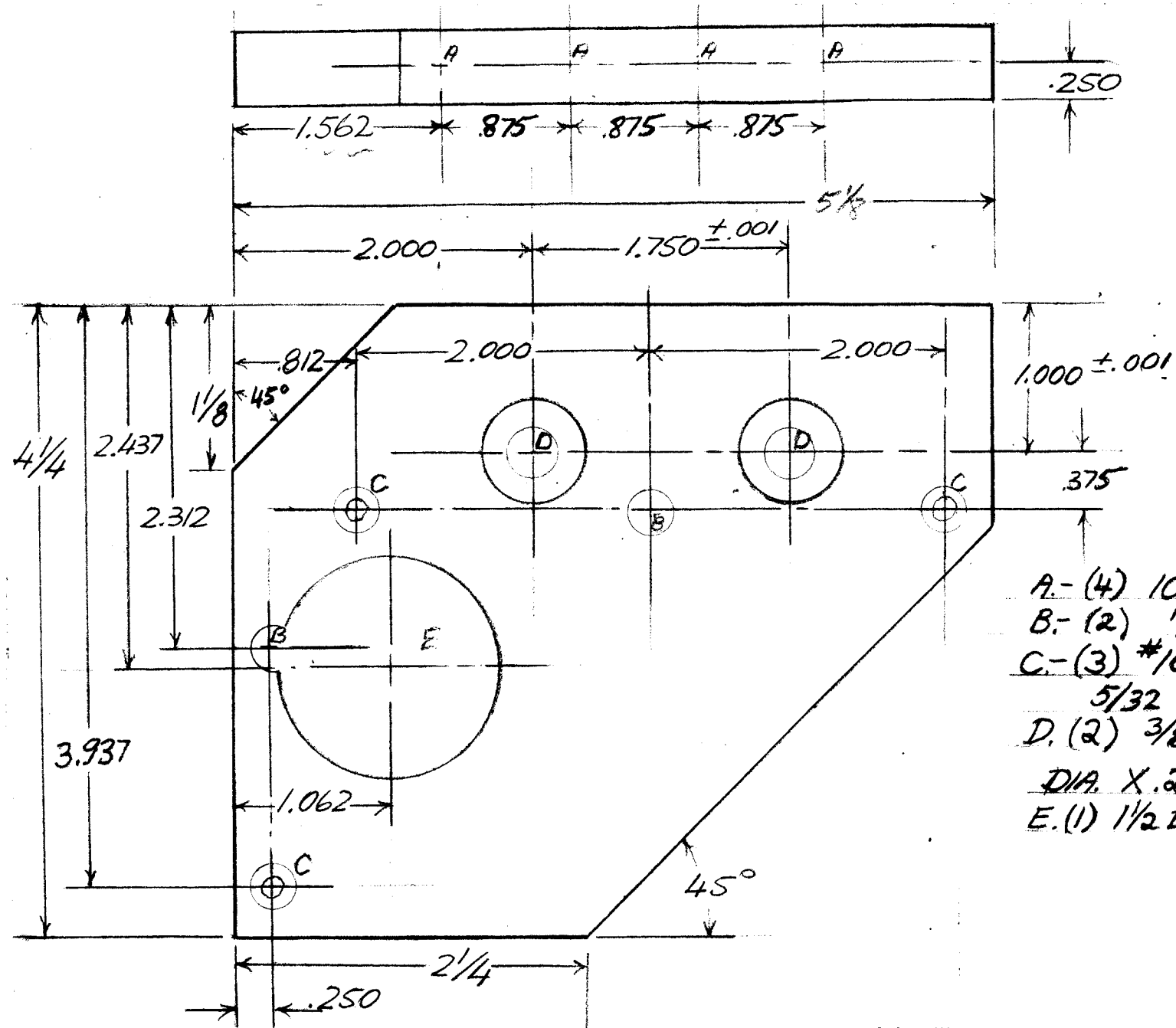


REVISIONS						
ZONE	LTR	DESCRIPTION	DATE	E.M.N.NO	DRAFT	CHKD APPD
	Ø	ORIG REL FOR PROD	1.3.69	H	GE	



- A. - (4) 10-32 5/8 DEEP
- B. - (2) 1/32 THRU
- C. - (3) #10 THRU. C'BORE 3/8 DIA. X 5/32 DEEP
- D. (2) 3/8 THRU C'BORE .6244 DIA. X .218 DEEP
- E. (1) 1/2 DIA. THRU

QTY / UNIT	SPT-3KVHF	AX 8080
APPLICATION		
CODE		

**NOTICE TO PERSONS RECEIVING THIS DRAWING**  
 THE TECHNICAL MATERIEL CORPORATION claims proprietary right in the material disclosed hereon. This drawing is issued in confidence for engineering information only and may not be reproduced or used to manufacture anything shown hereon without permission from THE TECHNICAL MATERIEL CORPORATION to the user. This drawing is loaned for mutual assistance and is subject to recall at any time.

UNLESS OTHERWISE SPECIFIED DIMENSIONS ARE IN INCHES AND INCLUDE CHEMICALLY APPLIED OR PLATED FINISHES

DECIMALS	FRACTIONS
.X ± .05	1/64
.XX ± .01	TOLS. ANGLES
.XXX ± .005	0° - 30'

MATERIAL 1/2 2024 T4 ALUM

FINISH #404

REQ'D	ITEM	PART NUMBER	DESCRIPTION	SYM.
LIST OF MATERIAL				
THE TECHNICAL MATERIEL CORP. MAMARONECK, NEW YORK				
GEAR PLATE				
SIZE	CODE IDENT. NO.	DWG NO.	ISSUE	
B	82679	MS8440	Ø	
SCALE	SHEET		OF	