

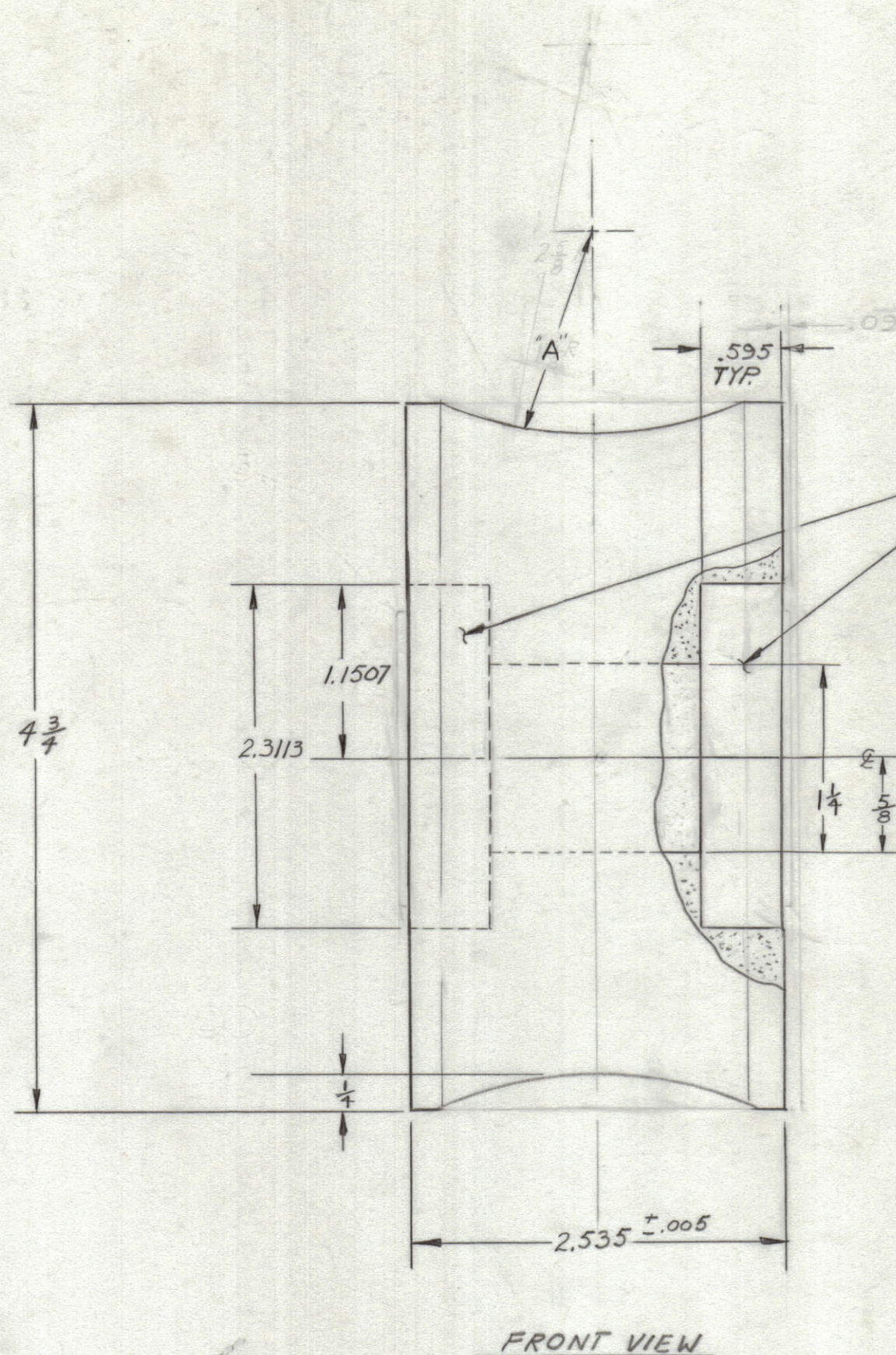
4

3

2

1

REVISIONS							
ZONE	LTR	DESCRIPTION	DATE	E.M.N.NO	DRAFT	CHKD	APPD
		ORIGINAL RELEASE FOR PRODUCTION	11/24/69		RG		

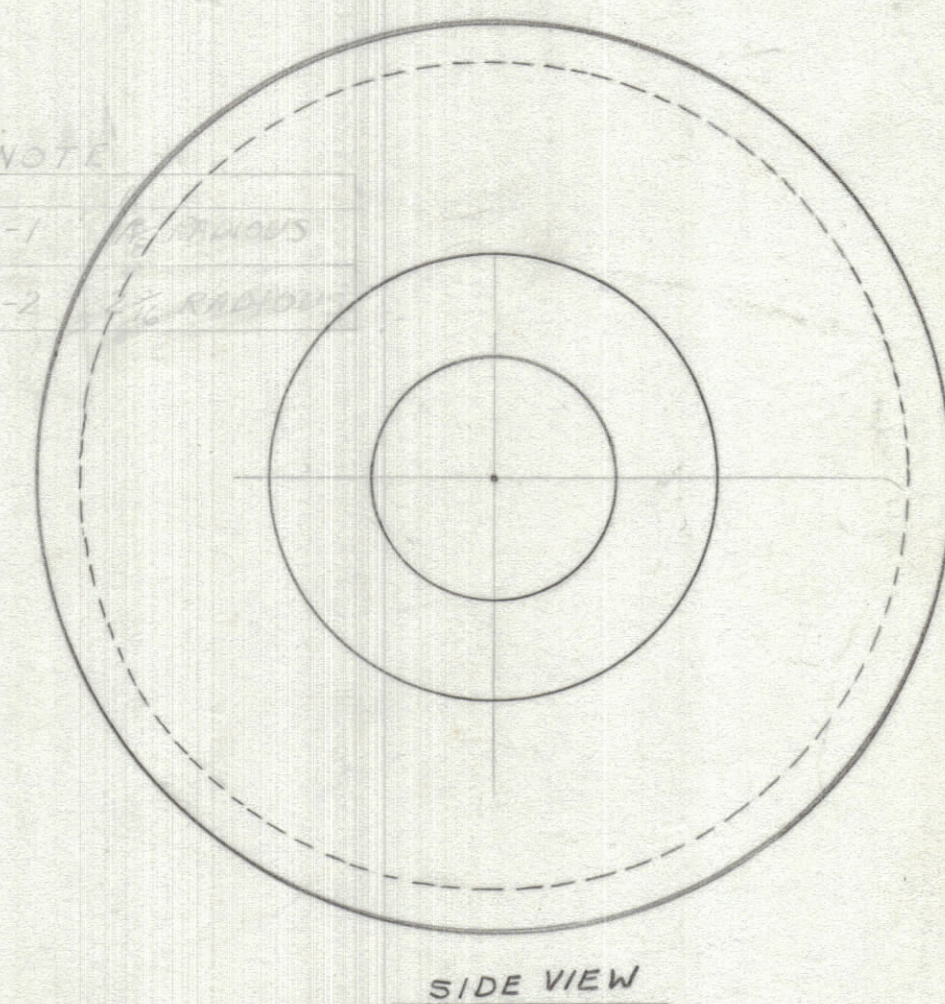


TYP  
BOTH SIDES  
TO FIT BEARING  
BB-130 BQ.CAT 59#713

	"A"
-1	1 3/8 RADIUS
-2	2 3/16 RADIUS

NOTE

-1	1 3/8 RADIUS
-2	2 3/16 RADIUS



MATERIAL  
4340 STEEL MIL-S-5000  
HEAT TREAT TO 280,000 PSI

1	UNIT 4	
QTY / UNIT	MODEL USED ON	ASS'Y NO.
APPLICATION		
CODE		
NOTICE TO PERSONS RECEIVING THIS DRAWING		
THE TECHNICAL MATERIEL CORPORATION claims proprietary right in the material disclosed hereon. This drawing is issued in confidence for engineering information only and may not be reproduced or used to manufacture anything shown hereon without permission from THE TECHNICAL MATERIEL CORPORATION to the user. This drawing is loaned for mutual assistance and is subject to recall at any time.		

UNLESS OTHERWISE SPECIFIED DIMENSIONS ARE IN INCHES AND INCLUDE CHEMICALLY APPLIED OR PLATED FINISHES	
TOLERANCES ON	
DECIMALS	FRACTIONS
.X ± .05	± 1/64
.XX ± .01	ANGLES
.XXX ± .005	± 0° -30'
MATERIAL	
SEE NOTE	
FINISH	
CADMIUM PLATE	

QTY. REQ.	ITEM	PART NO.	DESCRIPTION	SYMBOL
LIST OF MATERIAL				
FINAL APPROVAL		DATE	THE TECHNICAL MATERIEL CORP.	
MECH. DES.		DATE	MAMARONECK, NEW YORK	
ELECT. DES.		DATE	ANTENNA PYLON PULLEY	
CHECKED		DATE	"B"	
DRAWN		DATE		
C. G. Rob		11/4/68		
SIZE	CODE IDENT. NO.	DWG NO.	ISSUE	
C	82679	MS8434	Ø	
SCALE			SHEET 1 OF 1	

4

3

2

1