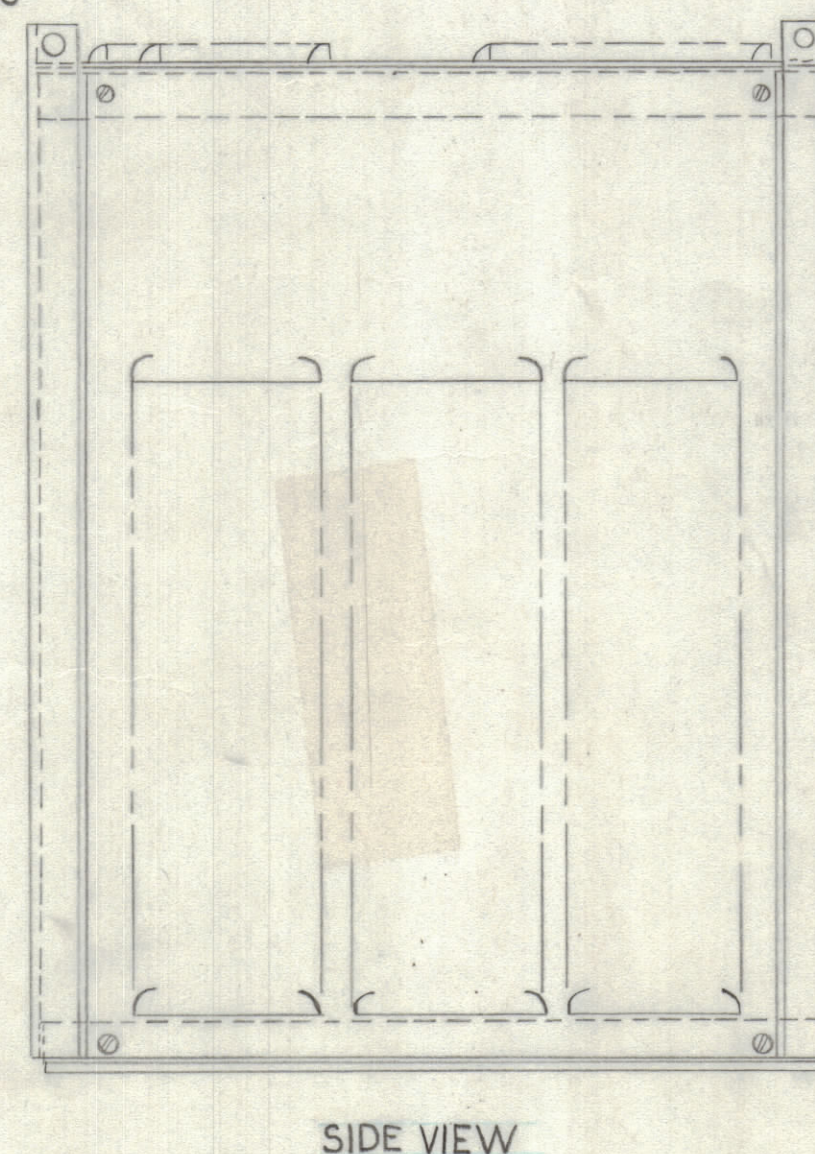
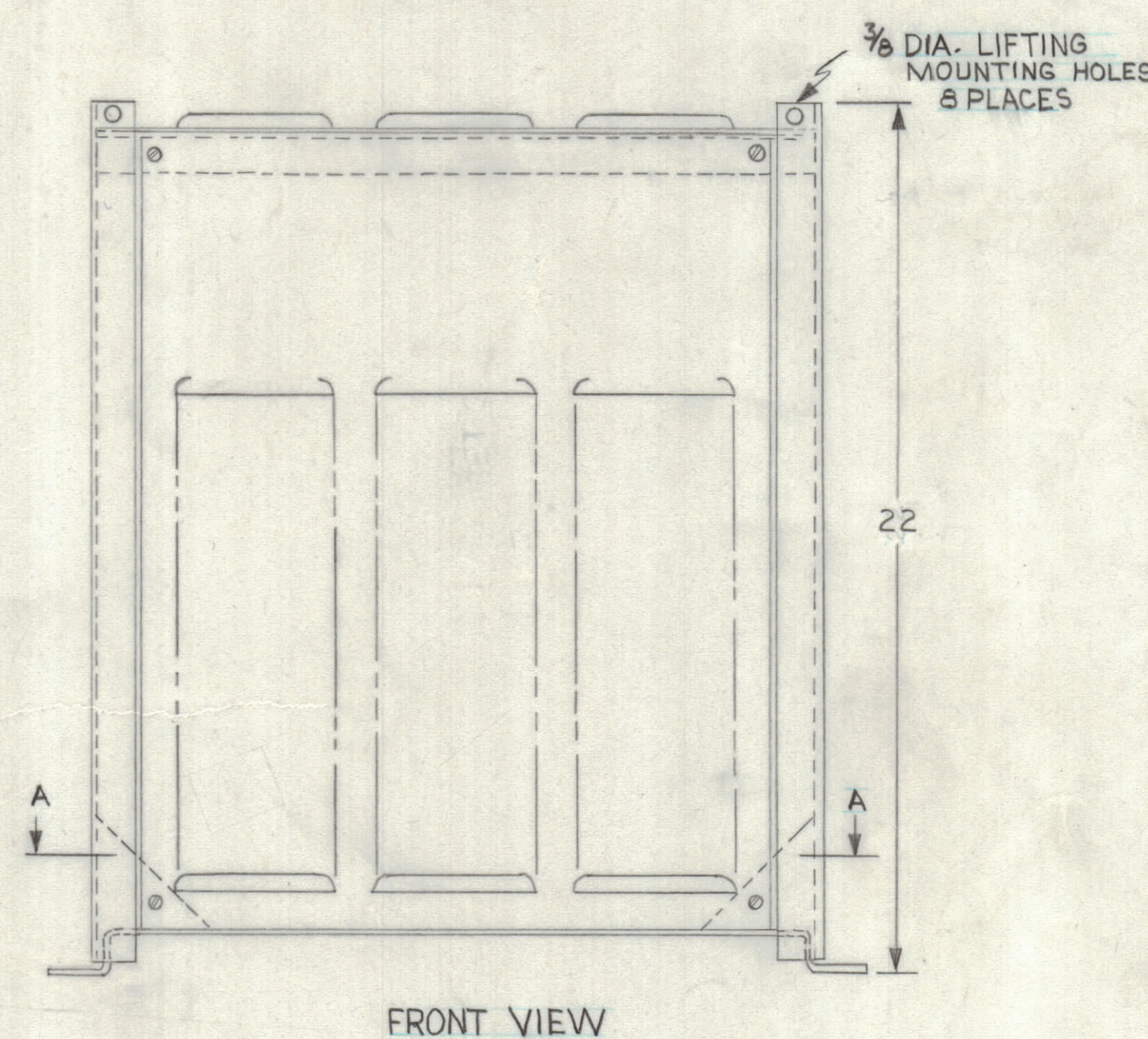
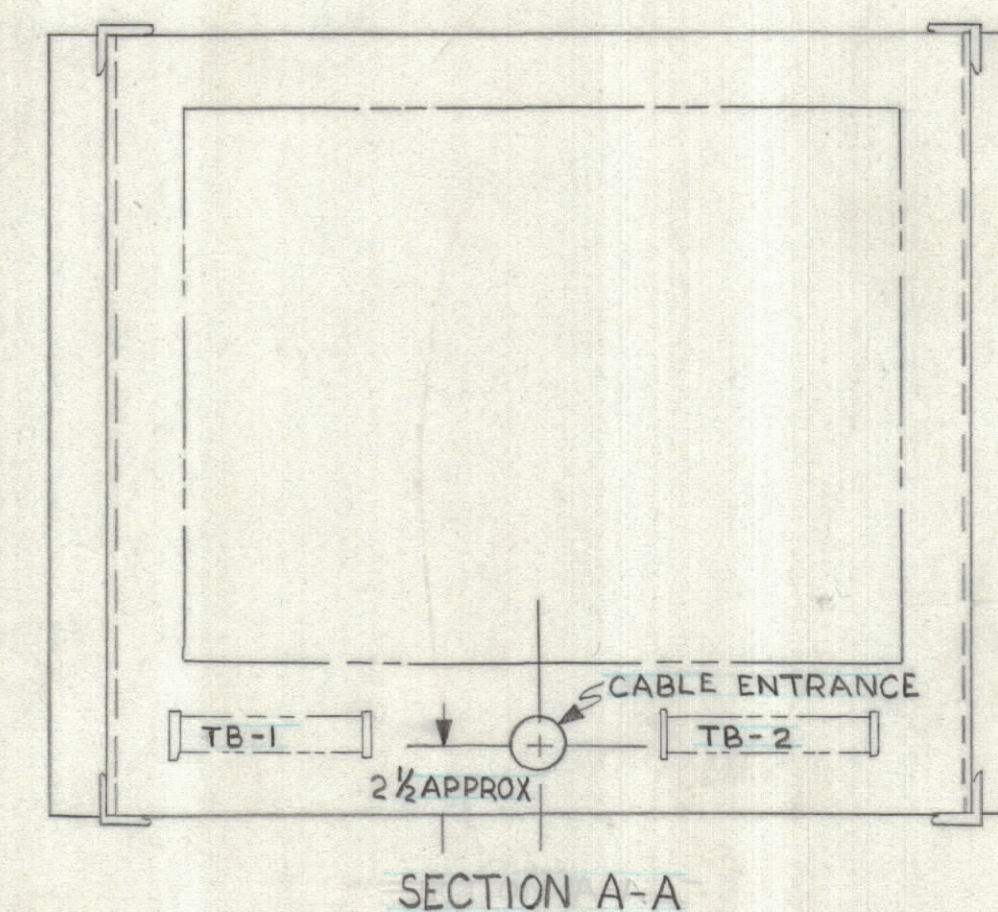
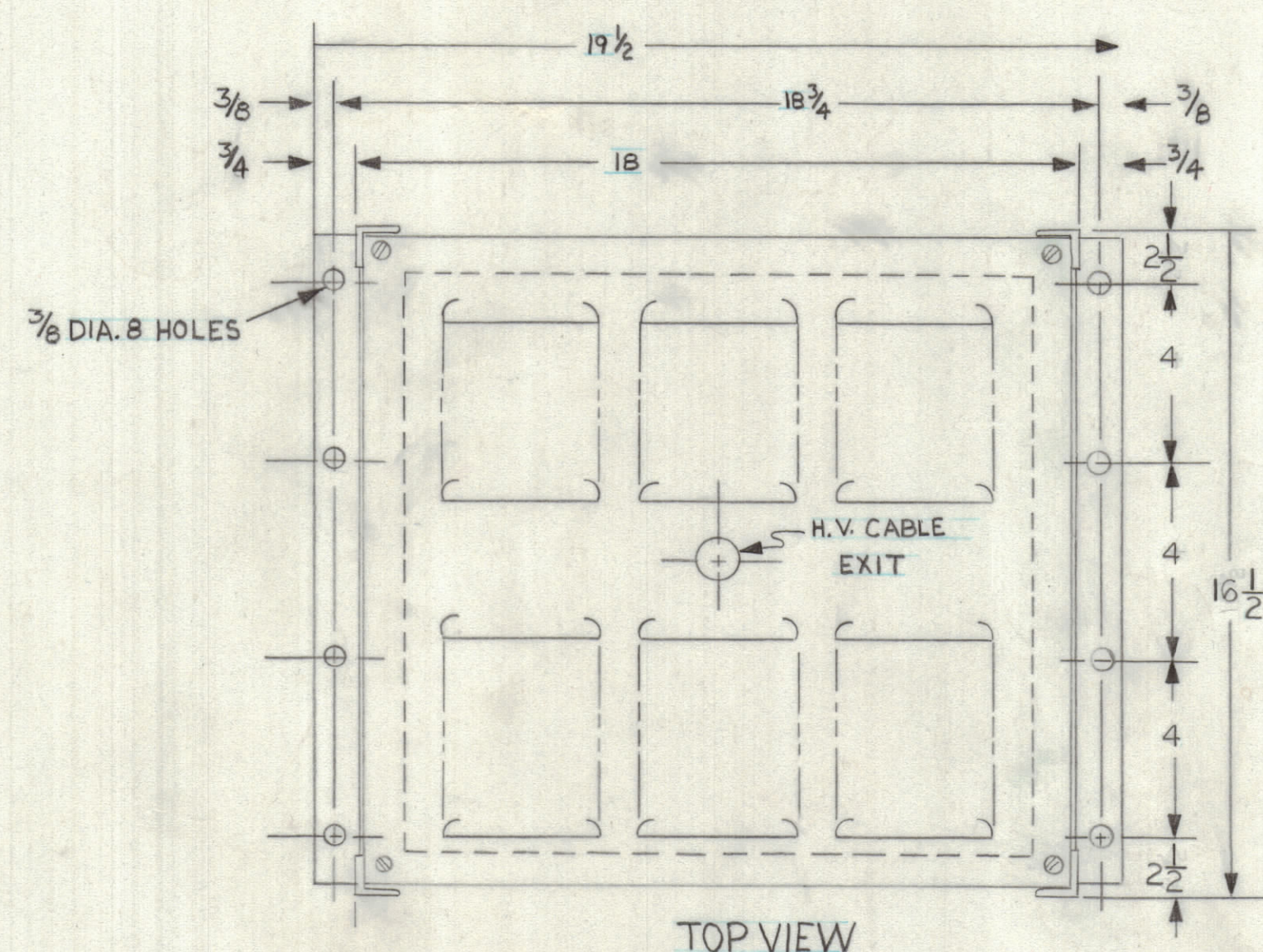


REVISIONS						
ZONE	LTR	DESCRIPTION	DATE	E.M.N.NO	DRAFT	CHKD APPD
	A	COMPLETE REVISION OLD MULTRONICS No C 2373016				
	X	DWG No WAS 90P12C7016	8-27-69		C9608	
	d	ORIGINAL RELEASE FOR PRODUCTION	9/1/69			



NOTE 1: ALL PANELS (FRONT, REAR, TOP & SIDES) ARE REMOVABLE.
NOTE 2: ESTIMATE WEIGHT APPROX. 350 LBS BS.

COPIED FROM UNIVERSAL VOLTRONIC CORP. DWG. No. C7-101-150 REV. 1

1	SPT-3KVHF	AV1080
QTY / UNIT	MODEL USED ON	ASSY NO.
APPLICATION		
CODE		
NOTICE TO PERSONS RECEIVING THIS DRAWING		
THE TECHNICAL MATERIEL CORPORATION claims proprietary right in the material disclosed hereon. This drawing is issued in confidence for engineering information only and may not be reproduced or used to manufacture anything shown hereon without permission from THE TECHNICAL MATERIEL CORPORATION to the user. This drawing is loaned for mutual assistance and is subject to recall at any time.		

UNLESS OTHERWISE SPECIFIED DIMENSIONS ARE IN INCHES AND INCLUDE CHEMICALLY APPLIED OR PLATED FINISHES		FINAL APPROVAL DATE 5-20-68
TOLERANCES ON		MECH. DES. DATE 8-14-69
DECIMALS .X ± .05 .XX ± .01 .XXX ± .005	FRACTIONS ± 1/64 ANGLES ± 0° -30'	ELECT. DES. DATE 6-10-67
		CHECKER DATE 12-7-67
		DRAWN DATE 12/6/67

QTY. REQ.	ITEM	PART NO.	DESCRIPTION	SYMBOL
LIST OF MATERIAL				
THE TECHNICAL MATERIEL CORP. MAMARONECK, NEW YORK				
H.V. POWER SUPPLY CABINET SPT-3KVHF TRANSFORMER				
SIZE	CODE IDENT. NO.	DWG NO.	ISSUE	
D	82679	40MS8395	Ø	
SCALE			SHEET	OF