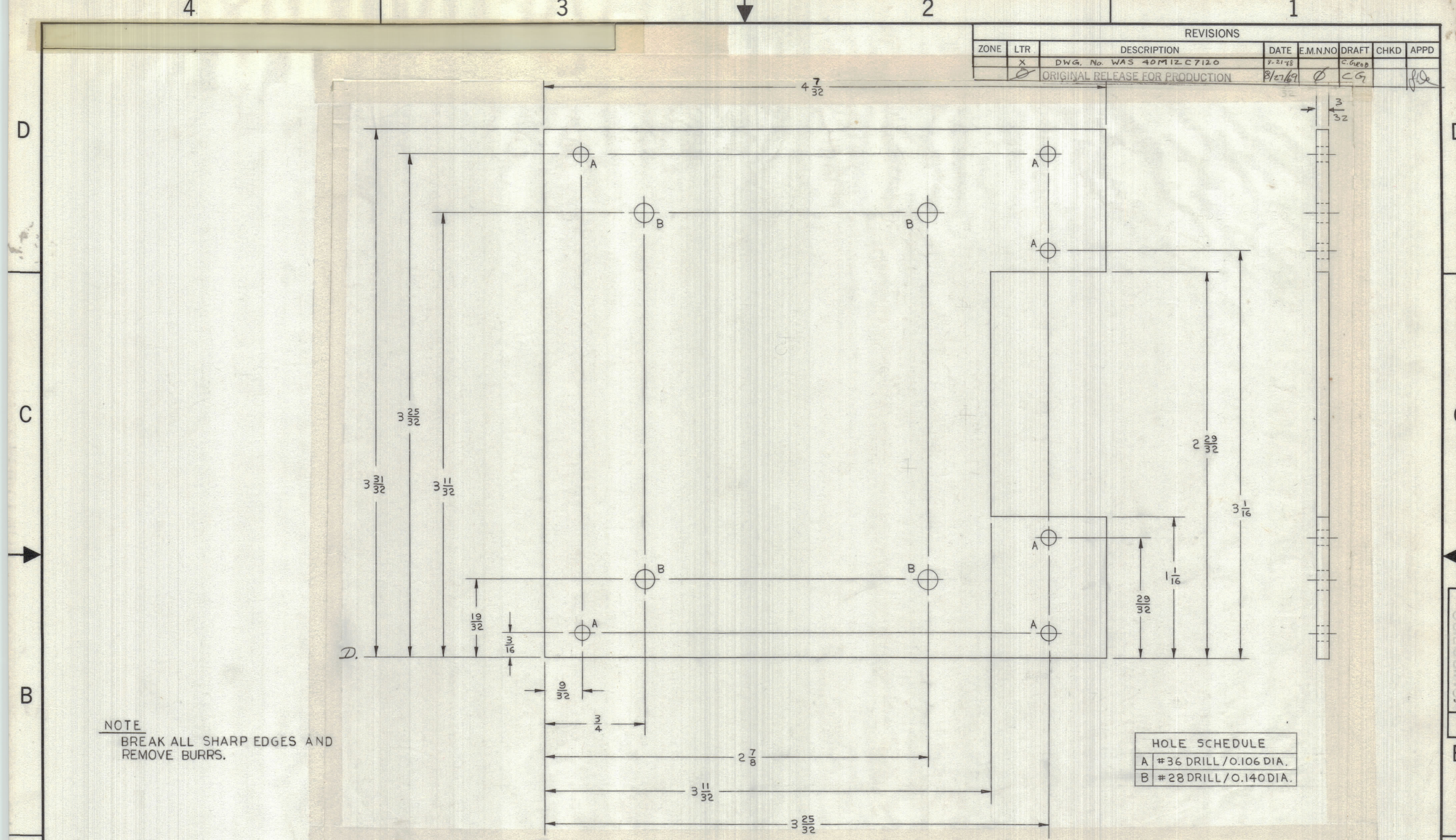


REVISIONS						
ZONE	LTR	DESCRIPTION	DATE	E.M.N.O	DRAFT	CHKD APPD
	X	DWG. No. WAS 40M12C7120	8-21-68		C. G. R.	
		ORIGINAL RELEASE FOR PRODUCTION	8/27/69		C. G.	



NOTE
BREAK ALL SHARP EDGES AND REMOVE BURRS.

HOLE SCHEDULE	
A	#36 DRILL / O.106 DIA.
B	#28 DRILL / O.140 DIA.

I	SPT-3KVHF	AP-137
QTY / UNIT	MODEL USED ON	ASS'Y NO.
APPLICATION A8056		
	CODE	

NOTICE TO PERSONS RECEIVING THIS DRAWING
THE TECHNICAL MATERIEL CORPORATION claims proprietary right in the material disclosed hereon. This drawing is issued in confidence for engineering information only and may not be reproduced or used to manufacture anything shown hereon without permission from THE TECHNICAL MATERIEL CORPORATION to the user. This drawing is loaned for mutual assistance and is subject to recall at any time.

UNLESS OTHERWISE SPECIFIED DIMENSIONS ARE IN INCHES AND INCLUDE CHEMICALLY APPLIED OR PLATED FINISHES		FINAL APPROVAL JFP DATE 7-1-68
TOLERANCES ON		MECH. DES. JFP DATE 5-13-68
DECIMALS	FRACTIONS	ELECT. DES. DATE 8-14-69
.X ± .05	± 1/64	CHECKED RSmith DATE 5-15-68
.XX ± .01	ANGLES	DRAWN CB DATE 5-13-68
.XXX ± .005	± 0°-30'	

MATERIAL 3/32 ALUM ALLOY 5052-H32
FINISH CAUSTIC ETCH AND GOLD IRIDITE

QTY. REQ.	ITEM	PART NO.	DESCRIPTION	SYMBOL
LIST OF MATERIAL				
THE TECHNICAL MATERIEL CORP. MAMARONECK, NEW YORK				
REAR PANEL				
FOR POWER SUPPLY				
PSP-R-21FL				
SIZE	CODE	IDENT. NO.	DWG. NO.	ISSUE
C	82679	40M	MS8383	φ
SCALE 2/1			SHEET	OF