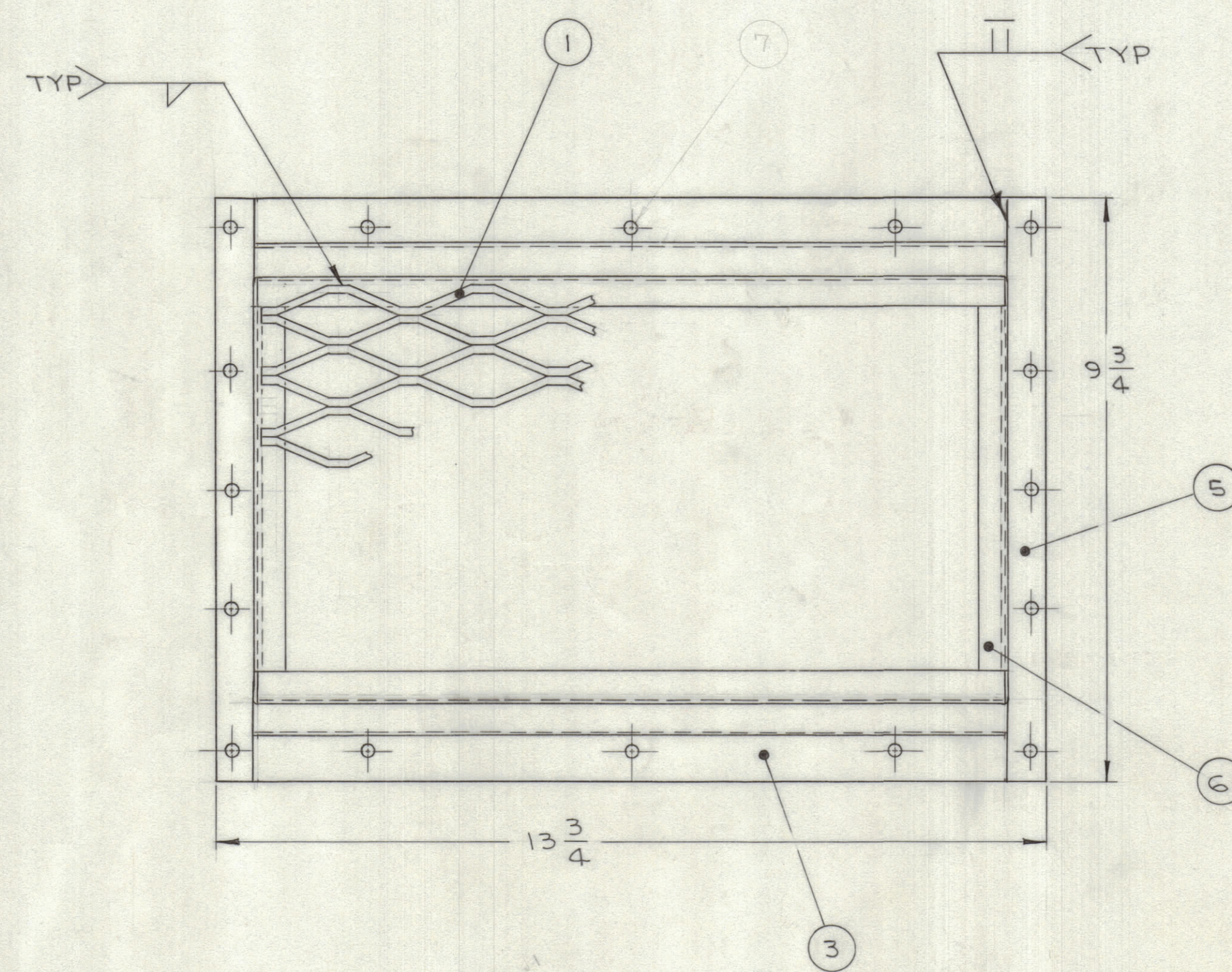
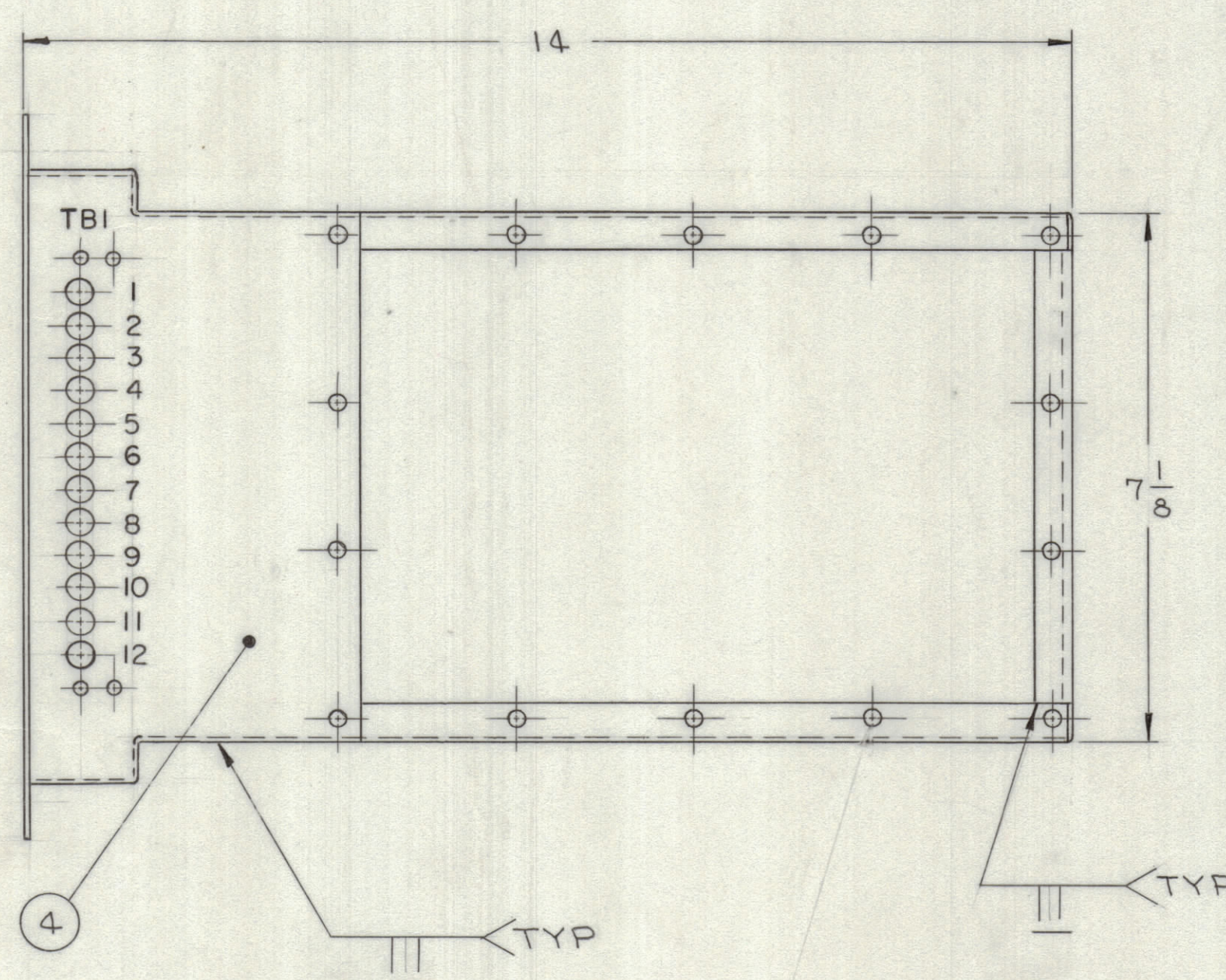
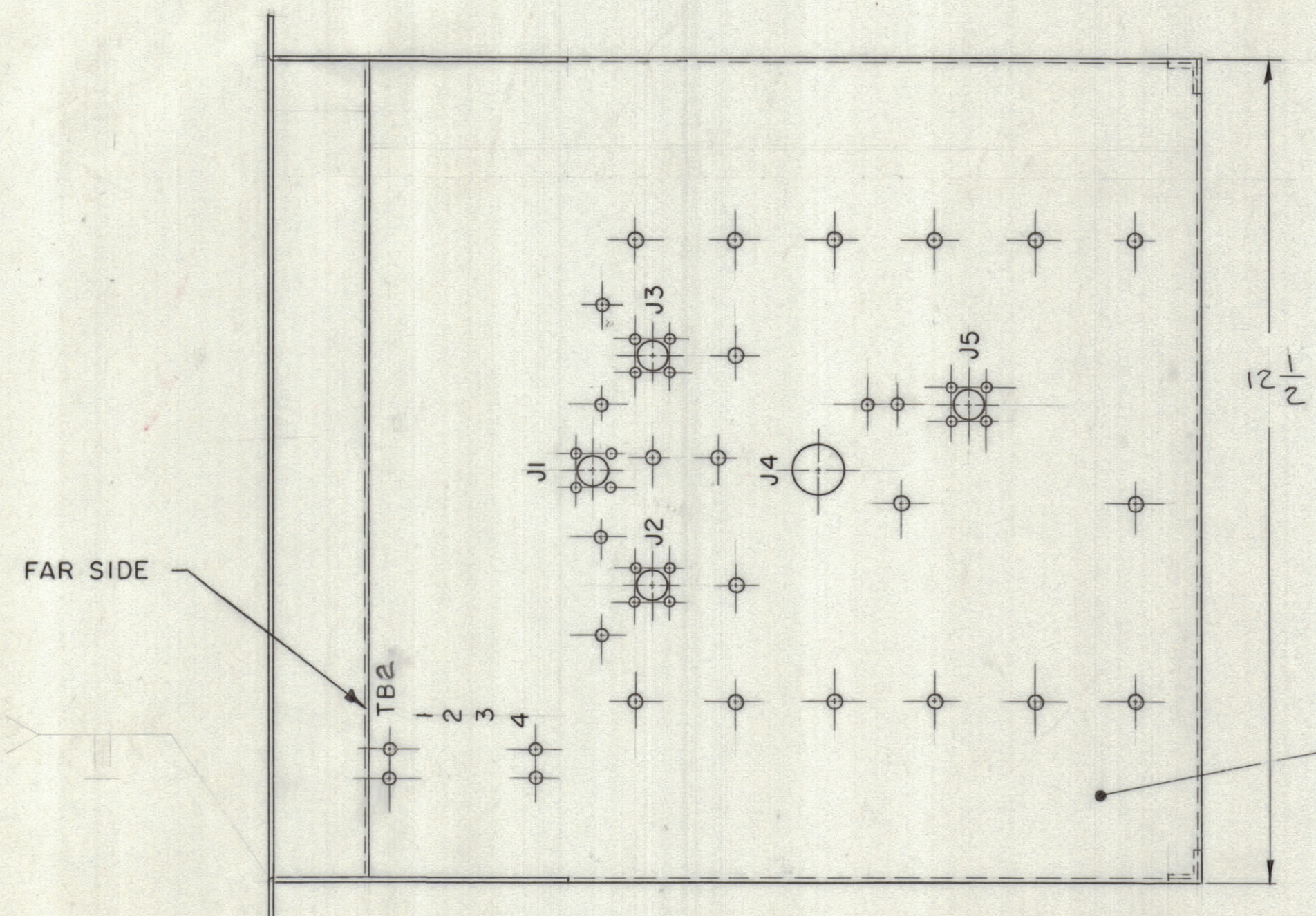


REVISIONS						
ZONE	LTR	DESCRIPTION	DATE	E.M.N.NO	DRAFT	CHKD APPD
X		+ON12D7208 Dwg. No.	8/21/68			
Ø		ORIGINAL RELEASE FOR PRODUCTION	8/19/68			



NOTES

- VENDOR RYERSON PHILADELPHIA, PENN PART NO. 3/4 NO. .080
- VENDOR PENN ENGINEERING & MANUFACTURING CORP DOYLESTOWN, PENN 18901
- RUBBER STAMP CHARACTERS 3/16 HIGH APPROX AS SHOWN WITH BLACK INK.

QTY.	REQ.	ITEM	PART NO.	DESCRIPTION	SYMBOL	NOTE
14	Ø	FE-632		NUT SELF LOCKING-CLINCHING		NOTE 2
20	Ø	FE-632		NUT SELF LOCKING-CLINCHING		NOTE 2
2	Ø	MS8367-2		REAR BRACE		
1	5	MS8366-2		SIDE PLATE		
1	4	MS8366-1		SIDE PLATE		
1	3	MS8365		BOTTOM PLATE		
1	2	MS8364		TOP PLATE		
1	1			SHEET, EXPANDED AL. FLATTENED 12 1/4 x 6 3/8		NOTE 1

QTY. REQ.	ITEM	PART NO.	DESCRIPTION	SYMBOL
-----------	------	----------	-------------	--------

LIST OF MATERIAL

THE TECHNICAL MATERIEL CORP.  
MAMARONECK, NEW YORK

UNLESS OTHERWISE SPECIFIED DIMENSIONS ARE IN INCHES AND INCLUDE CHEMICALLY APPLIED OR PLATED FINISHES	FINAL APPROVAL J.F.P.	DATE 5-10-68
	MECH. DES. P.T.	DATE 2-10-68
	ELECT. DES.	DATE 8-1-69
	CHECKED P.T.	DATE 5-10-68
	DRAWN W.M. LMKINLEY	DATE 10 MAY 68

TOLERANCES ON	
DECIMALS	FRACTIONS
.X ± .05	± 1/64
.XX ± .01	ANGLES
.XXX ± .005	± 0° -30'

1	SPT-3KVHF	AX8038
QTY / UNIT	MODEL USED ON	ASS'Y NO.
	APPLICATION	AB066
	CODE	

NOTICE TO PERSONS RECEIVING THIS DRAWING

THE TECHNICAL MATERIEL CORPORATION claims proprietary right in the material disclosed hereon. This drawing is issued in confidence for engineering information only and may not be reproduced or used to manufacture anything shown hereon without permission from THE TECHNICAL MATERIEL CORPORATION to the user. This drawing is loaned for mutual assistance and is subject to recall at any time.

MATERIAL		SIZE	CODE IDENT. NO.	DWG NO.	ISSUE
FINISH	GOLD IRIDITE	D	82679	MS8363	Ø
		SCALE	1/1	SHEET	1 OF 1