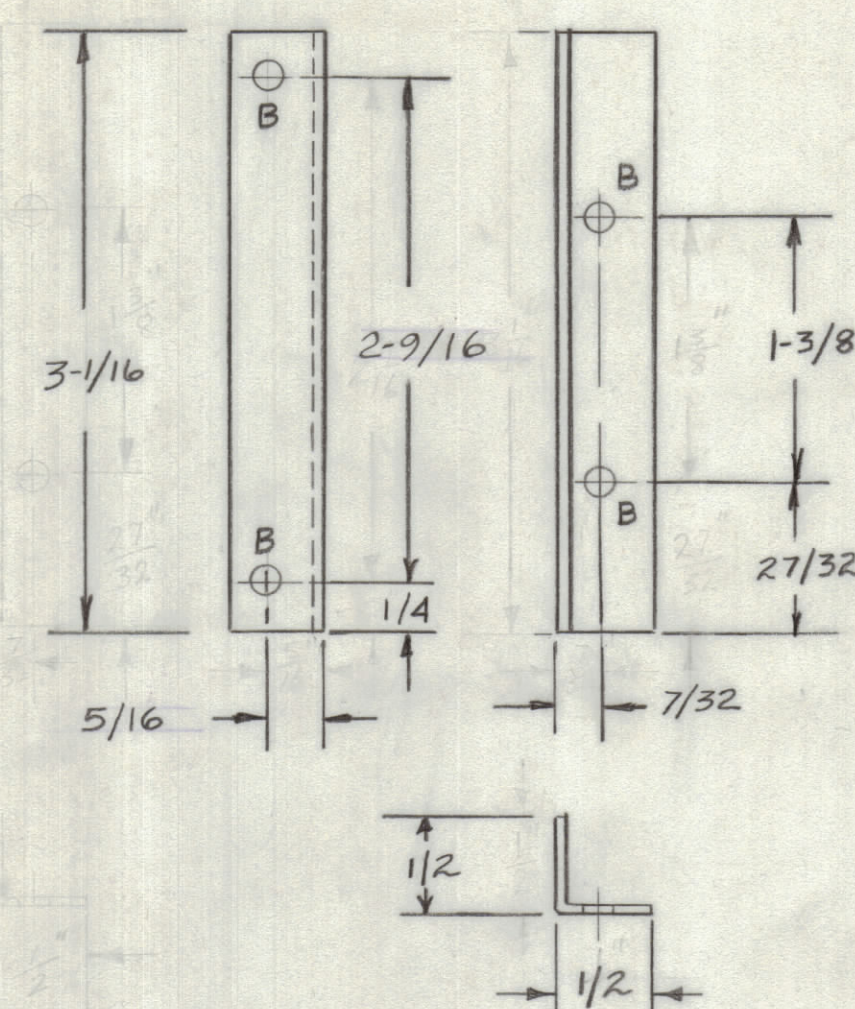
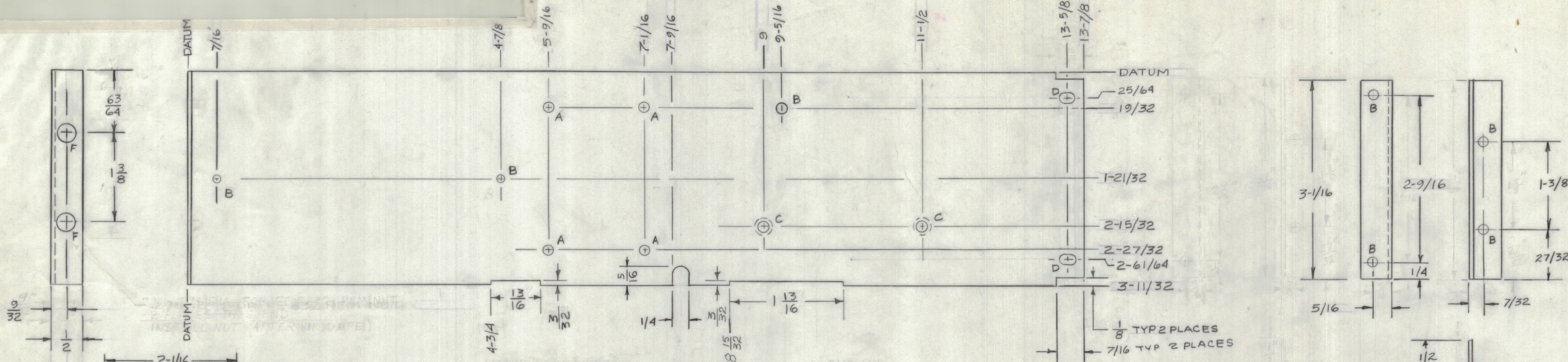
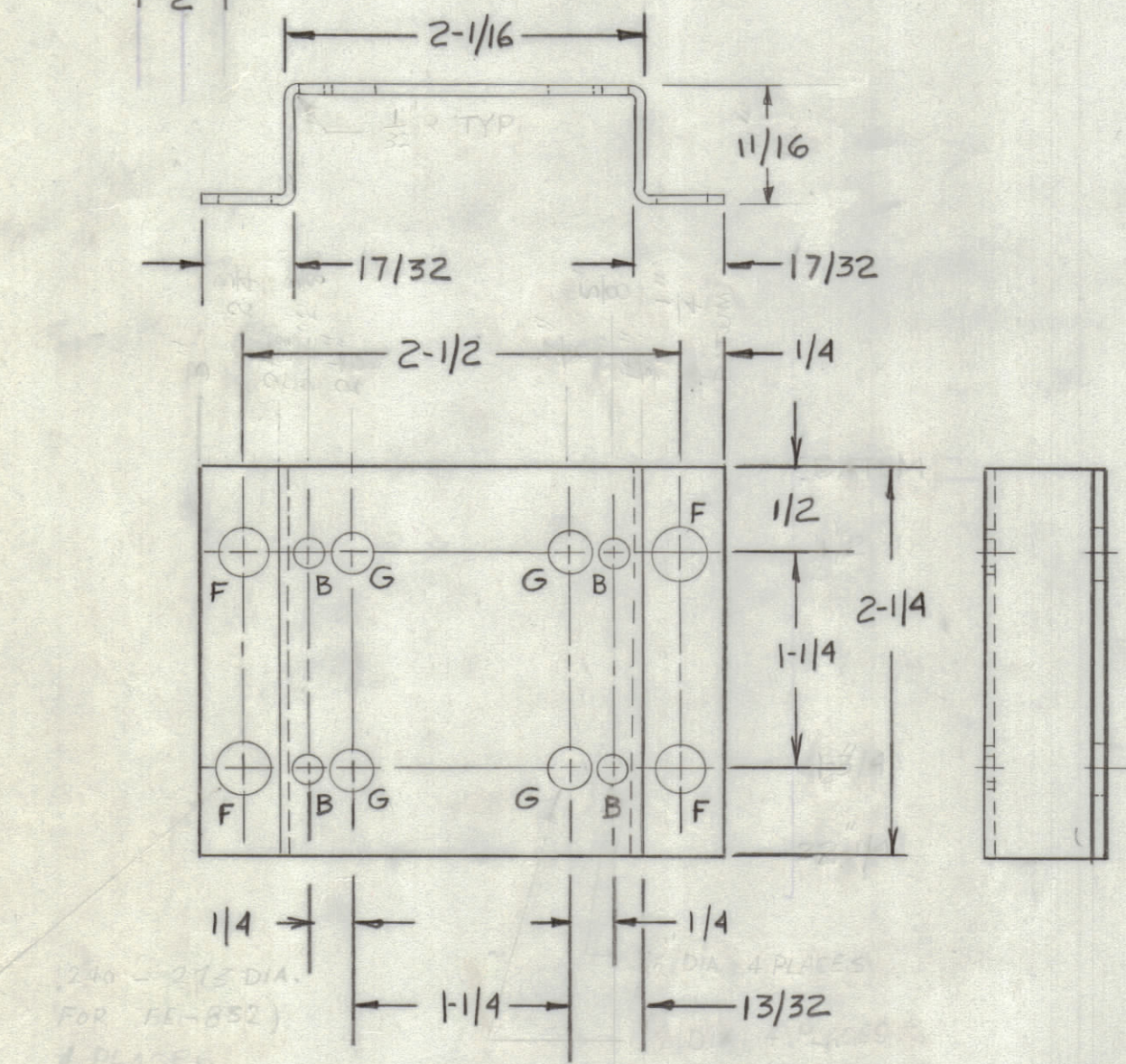


REVISIONS						
ZONE	LTR	DESCRIPTION	DATE	E.M.N.NO	DRAFT	CHKD APPD
X		DWG No WAS 40M12D7087	2-20-67		C. G. ROSS	
Ø		ORIGINAL RELEASE FOR PRODUCTION	8-15-69			

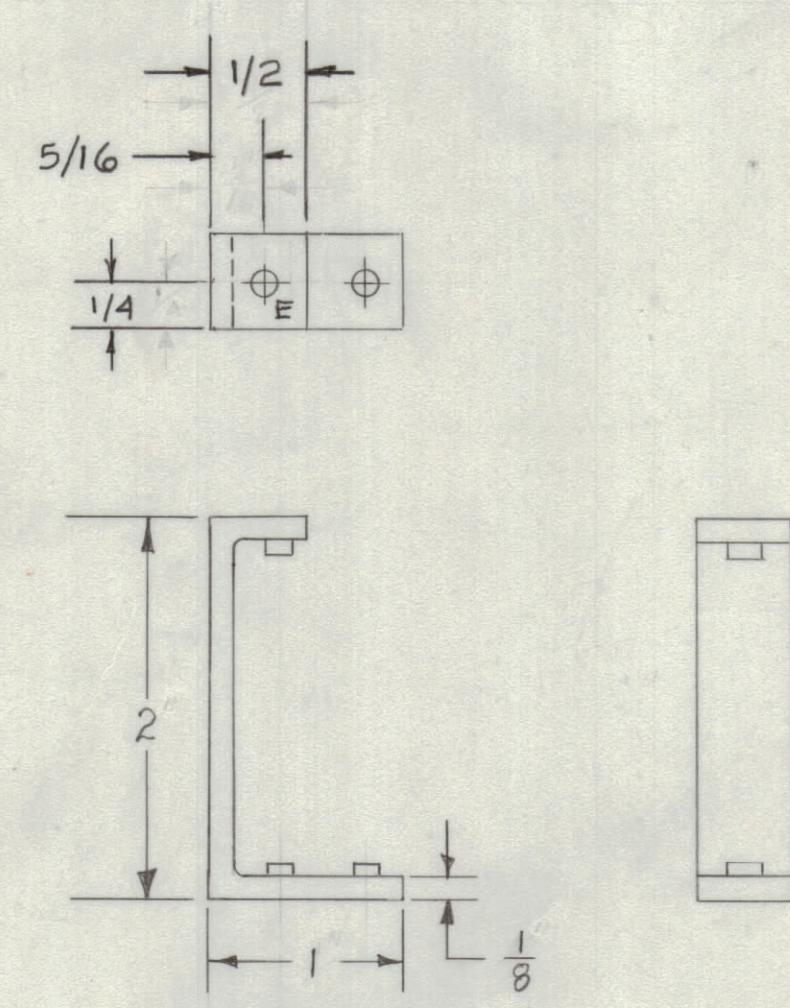


BRACKET -3
2 PER UNIT

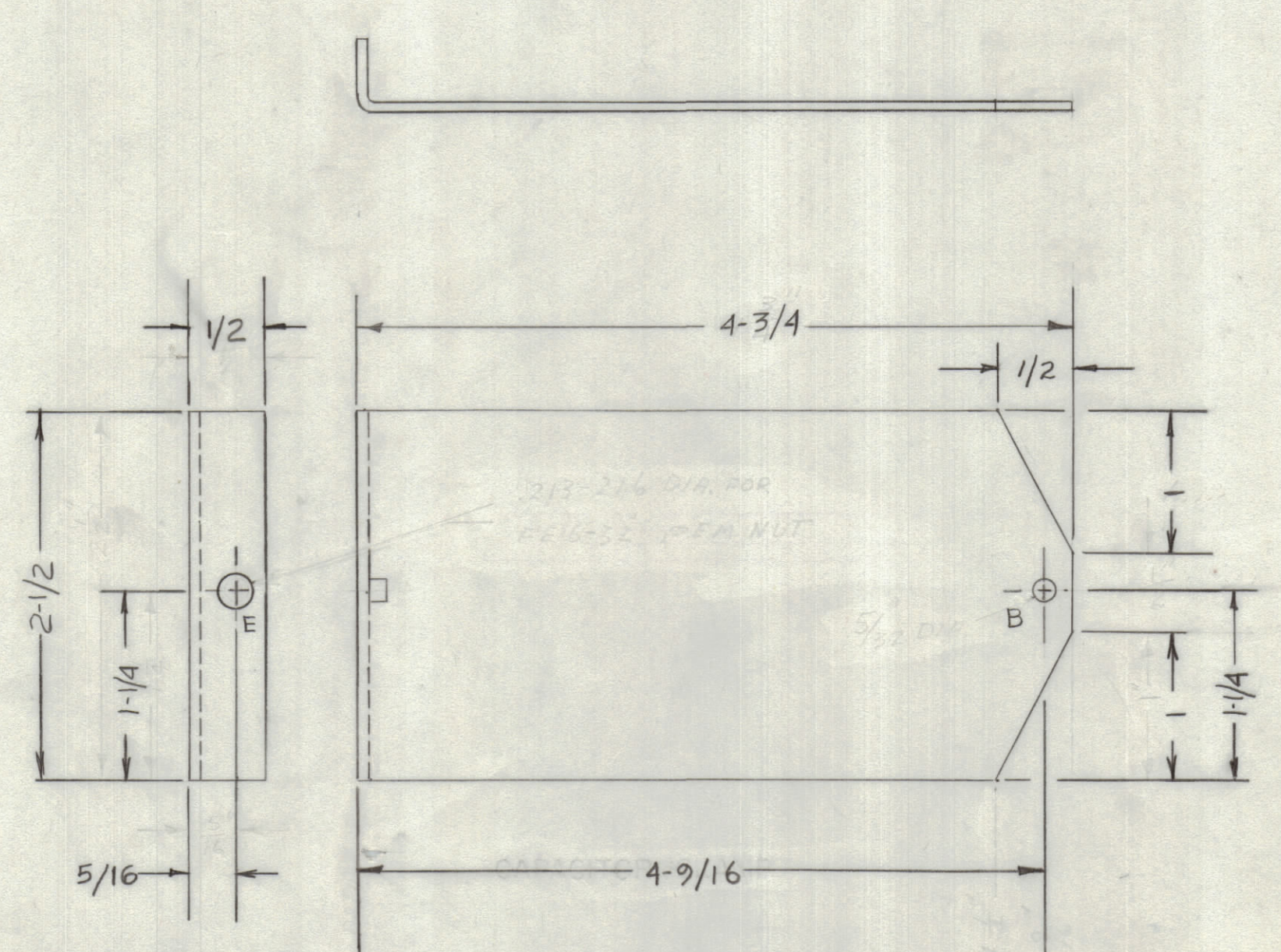
PARTITION
-1 SHOWN (1 PER UNIT)
-2 MIRROR IMAGE (1 PER UNIT)



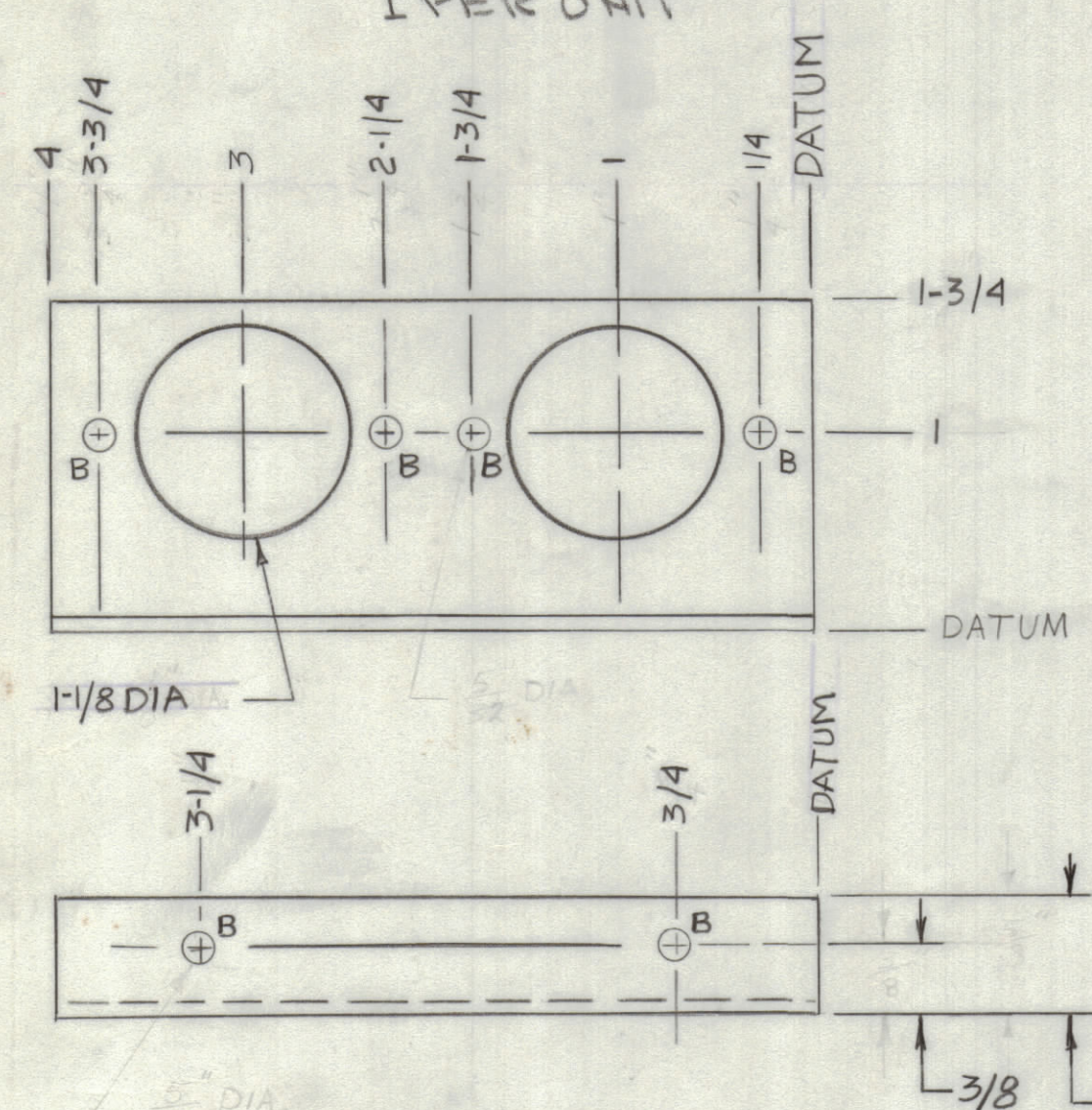
POT BRACKET -4
1 PER UNIT



CAP BRACKET -6
2 PER UNIT



CAPACITOR CLAMP -7
2 PER UNIT



RELAY BRACKET -5
2 PER UNIT

HOLE KEY	
A	.187 DIA. 4 PLACES
B	5/32 DIA. 2 PLACES
C	5/32 DIA, C'SK FAR SIDE 82° TO .279 DIA.
D	5/32X7/32 PUNCH
E	.213-.216 DIA. FOR FE 632 PEM NUT
F	.290-.293 DIA FOR FE 832 PEM NUT
G	1/4 DIA.

QTY. REQ.	ITEM	PART NO.	DESCRIPTION	SYMBOL
LIST OF MATERIAL				
THE TECHNICAL MATERIEL CORP. MAMARONECK, NEW YORK				
BIAS CONTROL & AM MODULATOR PIECE PARTS				
FINAL APPROVAL	JFP	DATE	4-17-68	
MECH. DES.	ReSmith	DATE	3-23-68	
ELECT. DES.		DATE	8-14-69	
CHECKED	ReSmith	DATE	4-17-68	
DRAWN	L. McDOWELL	DATE	4-8-68	
MATERIAL 1/16 ALUM ALLOY 5052-H32 EXCEPT-6 IS 1/8			SIZE	CODE IDENT. NO.
FINISH ETCH & GOLD IRIDITE			D 82679	40MM S 8353
			SCALE	SHEET OF

QTY / UNIT	MODEL USED ON	ASS'Y NO.
	SPT-3KVHF	AX8097-1-2
APPLICATION		
CODE		
<small>NOTICE TO PERSONS RECEIVING THIS DRAWING</small> <small>THE TECHNICAL MATERIEL CORPORATION claims proprietary right in the material disclosed hereon. This drawing is issued in confidence for engineering information only and may not be reproduced or used to manufacture anything shown hereon without permission from THE TECHNICAL MATERIEL CORPORATION to the user. This drawing is loaned for mutual assistance and is subject to recall at any time.</small>		