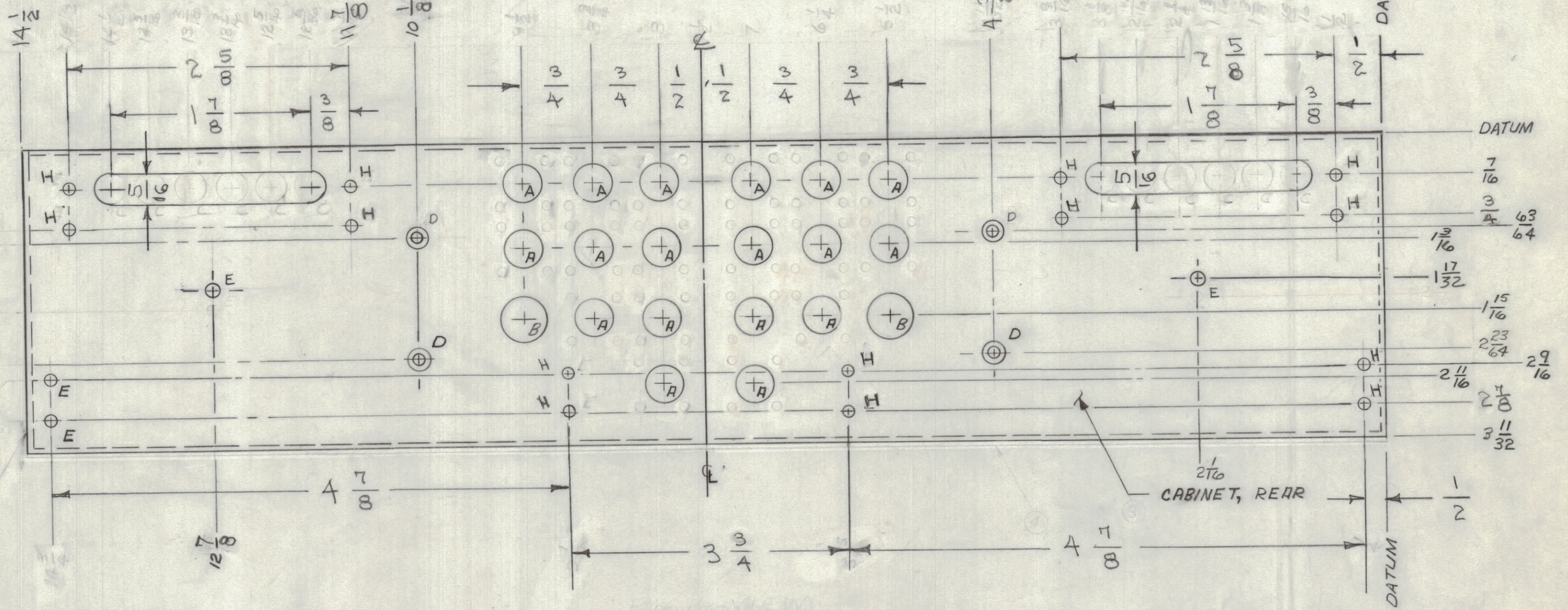
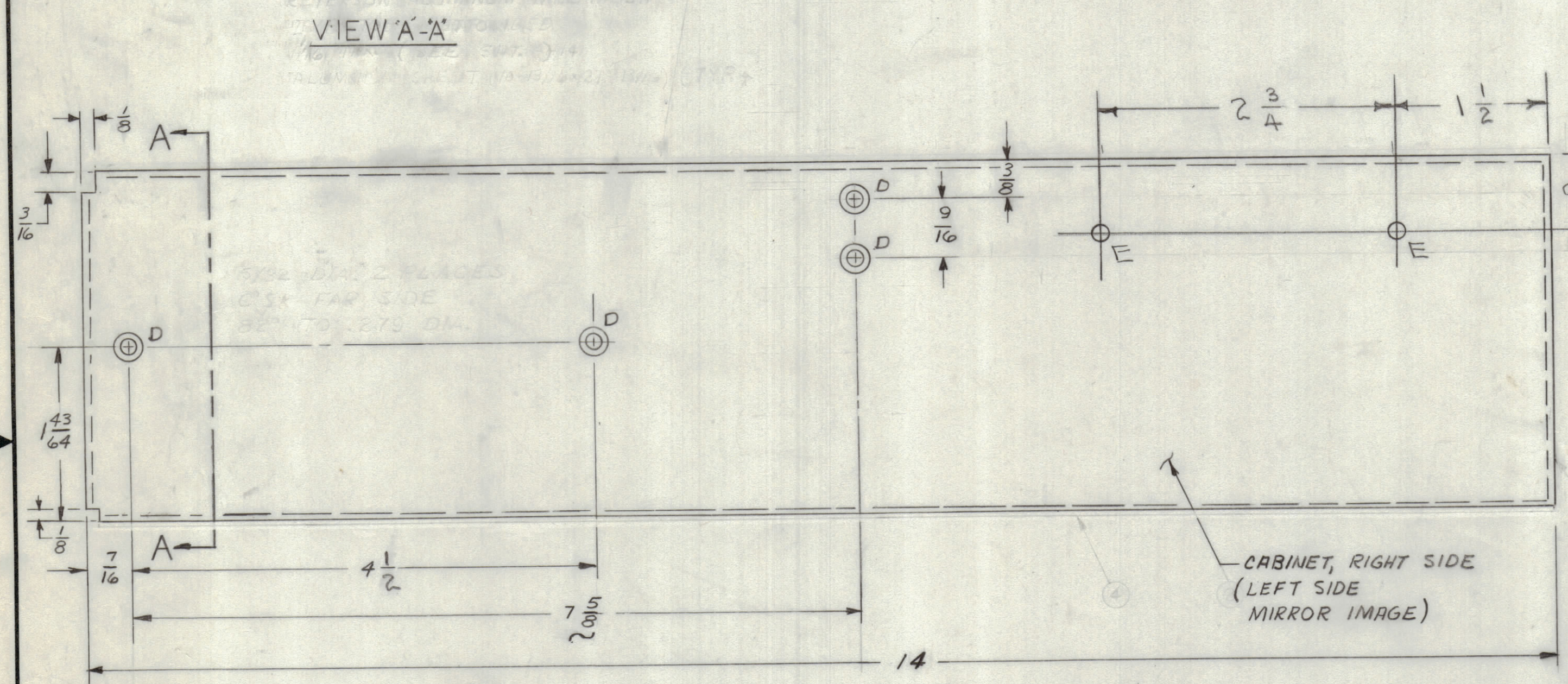
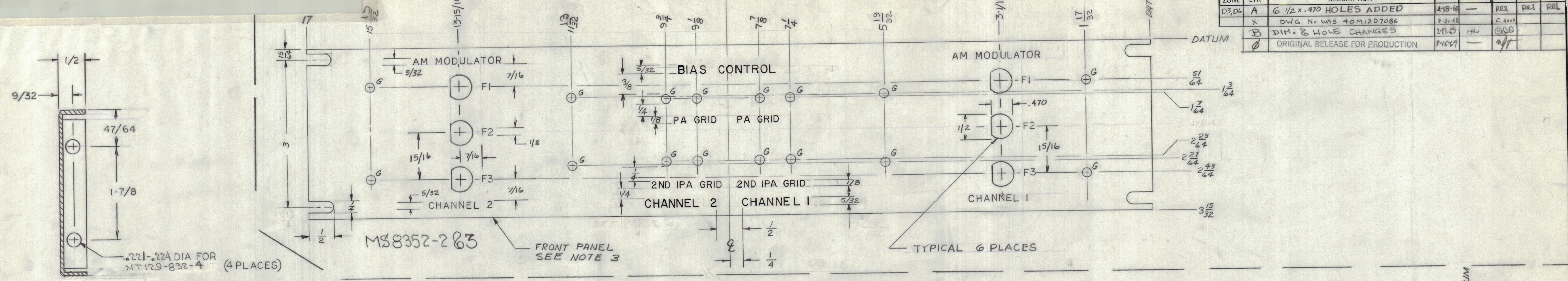


		REVISIONS					
ZONE	LTR	DESCRIPTION	DATE	E.M.N.NO.	DRAFT	CHKD	APPD
D3, D4	A	6 1/2 x .470 HOLES ADDED	4-18-68		REB	REL	REL
X		DWG No. WAS 40M127086	8-21-68		C. G. 100		
B		DIM. & HOLE CHANGES	2-11-68		HL		
Ø		ORIGINAL RELEASE FOR PRODUCTION	8-15-67				



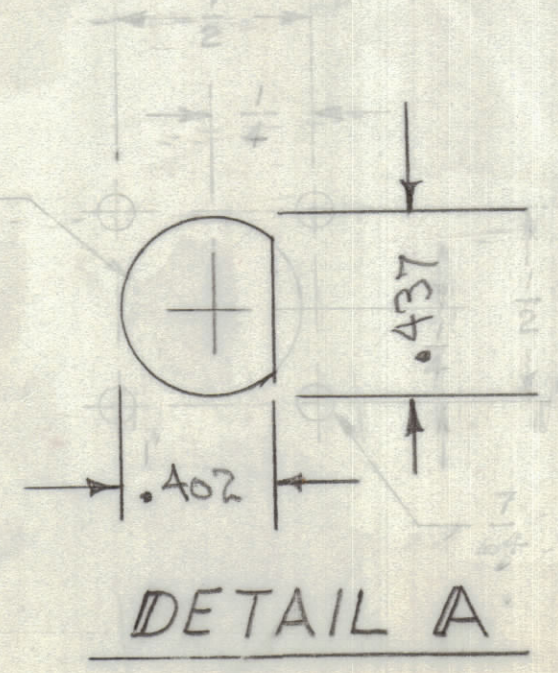
NOTE: DETAIL SYMMETRICAL ABOUT VERTICAL CENTERLINE

- HOLE SCHEDULE**
- A SEE DETAIL A (18 PLACES)
 - B 1/2 DIA. (2 PLACES)
 - C 1/32 DIA. (12 PLACES)
 - D #27 DRILL, C'SK 82° TO .279 DIA (12 PLACES)
 - E 5/32 DIA. (6 PLACES)
 - F 3/16 DIA. (16 PLACES)
 - H 1/8 DIA. (16 PLACES)

- NOTES:**
1. FRONT PANEL 1/8 ALUM. ALLOY 2024-T3 FINISH: GREY VINYL CORITEX NO. 63K-L10144 PER TMC SPEC. S-521
 2. CABINET 1/16 ALUM. ALLOY 5052 H32 GOLD IRIDITE AFTER WELDING.
 3. TWO PANELS REQ'D: MS8352-1 AS SHOWN MS8352-2 CHANNELS SHOULD READ CHANNEL 4 & CHANNEL 3

CHANNEL IDENTIFICATION SHOULD BE SPACED EITHER SIDE OF C OF PANEL WITH 1/8 SPACE BETWEEN

MS8352-1



QTY. REQ.	ITEM	PART NO.	DESCRIPTION	SYMBOL
3	MS8352-3		CABINET (SEE ALSO SHEET 2)	
2	MS8352-2		PANEL, CHANNEL 3 AND 4	
1	MS8352-1		PANEL, CHANNEL 1 AND 2	

LIST OF MATERIAL 40M127086

QTY / UNIT	MODEL USED ON	ASS'Y NO.
1	SPT 3KVHF	AX8067-1
1	SPT 3KVHF	AX8067-2

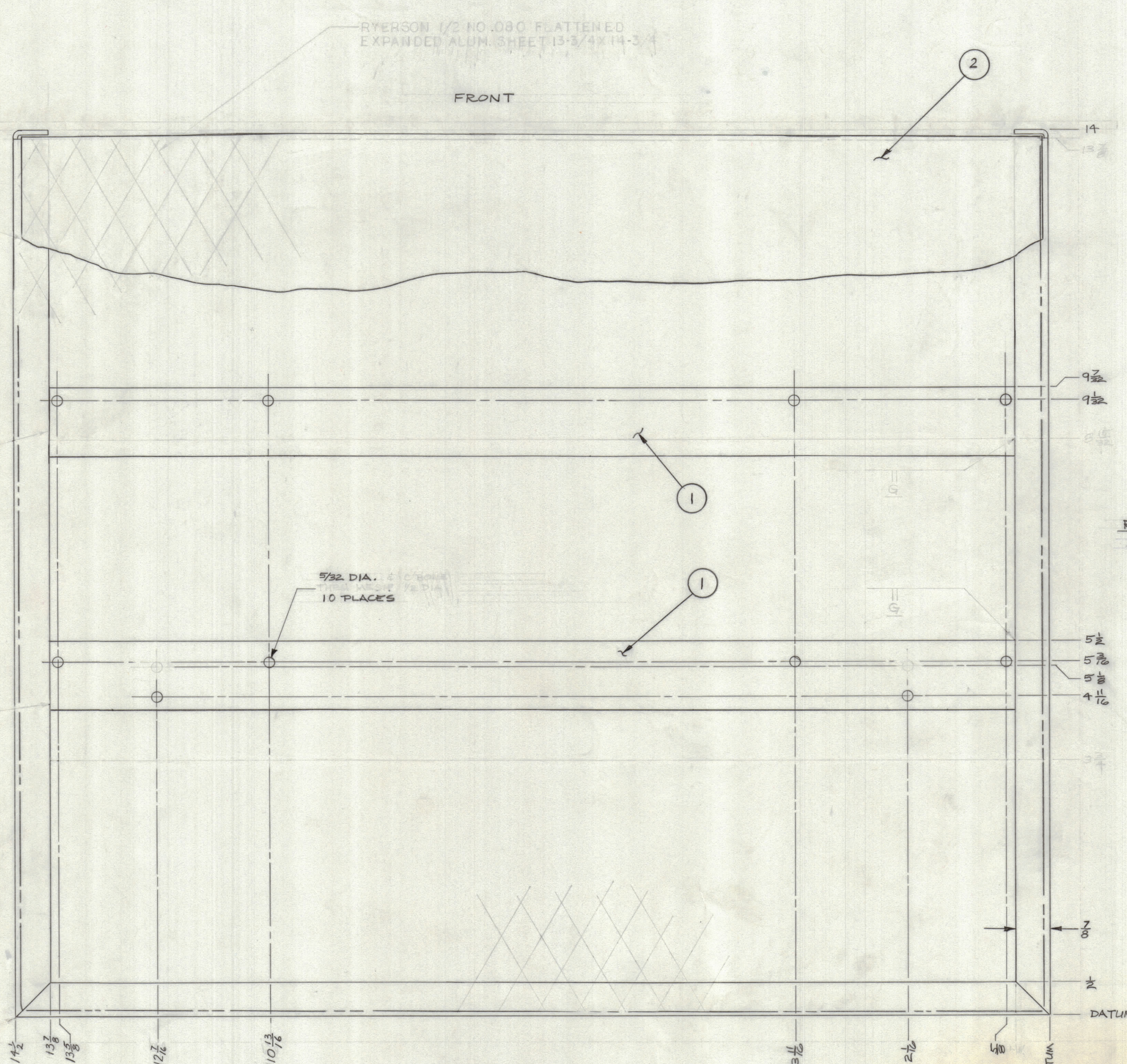
TOLERANCES ON	
DECIMALS	FRACTIONS
X ± .05	± 1/64
XX ± .01	ANGLES
XXX ± .005	± 0° - 30'

FINAL APPROVAL		DATE
JEP	3-23-68	4-16-68
MECH. DES.	DATE	
ELECT. DES.	DATE	
CHECKED	DATE	
DRAWN	DATE	

THE TECHNICAL MATERIEL CORP.		CABINET DETAILS	
MAMARONECK, NEW YORK		BIAS CONTROL & AM MODULATOR	
SIZE	CODE IDENT. NO.	DWG NO.	ISSUE
D	82679	40M127086	Ø
SCALE 1:1		SHEET 1 OF 2	

NOTICE TO PERSONS RECEIVING THIS DRAWING
THE TECHNICAL MATERIEL CORPORATION claims proprietary right in the material disclosed hereon. This drawing is issued in confidence for engineering information only and may not be reproduced or used to manufacture anything shown hereon without permission from THE TECHNICAL MATERIEL CORPORATION to the user. This drawing is loaned for mutual assistance and is subject to recall at any time.

REVISIONS						
ZONE	LTR	DESCRIPTION	DATE	E.M.N.NO	DRAFT	CHKD
X		DWG No. WAS 40M12D7086	8-21-68		C. GIBBS	
Ø		ORIGINAL RELEASE FOR PRODUCTION	8-15-69			



RYERSON 1/2 NO. 030 FLATTENED
EXPANDED ALUM. SHEET 13-3/4 X 14-3/4

FRONT

LEFT SIDE

RIGHT SIDE
SEE SHEET 1

5/32 DIA. STAINLESS
10 PLACES

REAR
SEE SHEET 1

1	SPT-3KVHF	AX 8067-1-2
QTY / UNIT	MODEL USED ON	ASS'Y NO.
APPLICATION		
CODE		

NOTICE TO PERSONS RECEIVING THIS DRAWING
THE TECHNICAL MATERIEL CORPORATION claims proprietary right in the material disclosed hereon. This drawing is issued in confidence for engineering information only and may not be reproduced or used to manufacture anything shown hereon without permission from THE TECHNICAL MATERIEL CORPORATION to the user. This drawing is loaned for mutual assistance and is subject to recall at any time.

UNLESS OTHERWISE SPECIFIED DIMENSIONS ARE IN INCHES AND INCLUDE CHEMICALLY APPLIED OR PLATED FINISHES		FINAL APPROVAL J.F.P. S.M. 7-16-68	DATE
TOLERANCES ON		MECH. DES. R. Smith 3-23-68	DATE
DECIMALS	FRACTIONS	ELECT. DES. R. Smith 4-16-68	DATE
.X ± .05	± 1/64	CHECKED R. Smith 4-16-68	DATE
.XX ± .01	ANGLES	DRAWN RDS 4-5-68	DATE
.XXX ± .005	± 0°-30'		
MATERIAL .064 5052-H32 ALUM ALLOY		SIZE CODE IDENT. NO. DWG NO.	
FINISH S409 ETCH AND GOLD IRIDITE		D 82679	40M12D7086

QTY. REQ.	ITEM	PART NO.	DESCRIPTION	SYMBOL
1	2	MS8228	COVER	
2	1	MS8232	BRACE, MOUNTING	

LIST OF MATERIAL			
THE TECHNICAL MATERIEL CORP. MAMARONECK, NEW YORK			
BOTTOM VIEW WELDING DETAILS			
BIAS CONTROL & AM MODULATOR CABINET			
SCALE	1-1	SHEET	2 OF 2