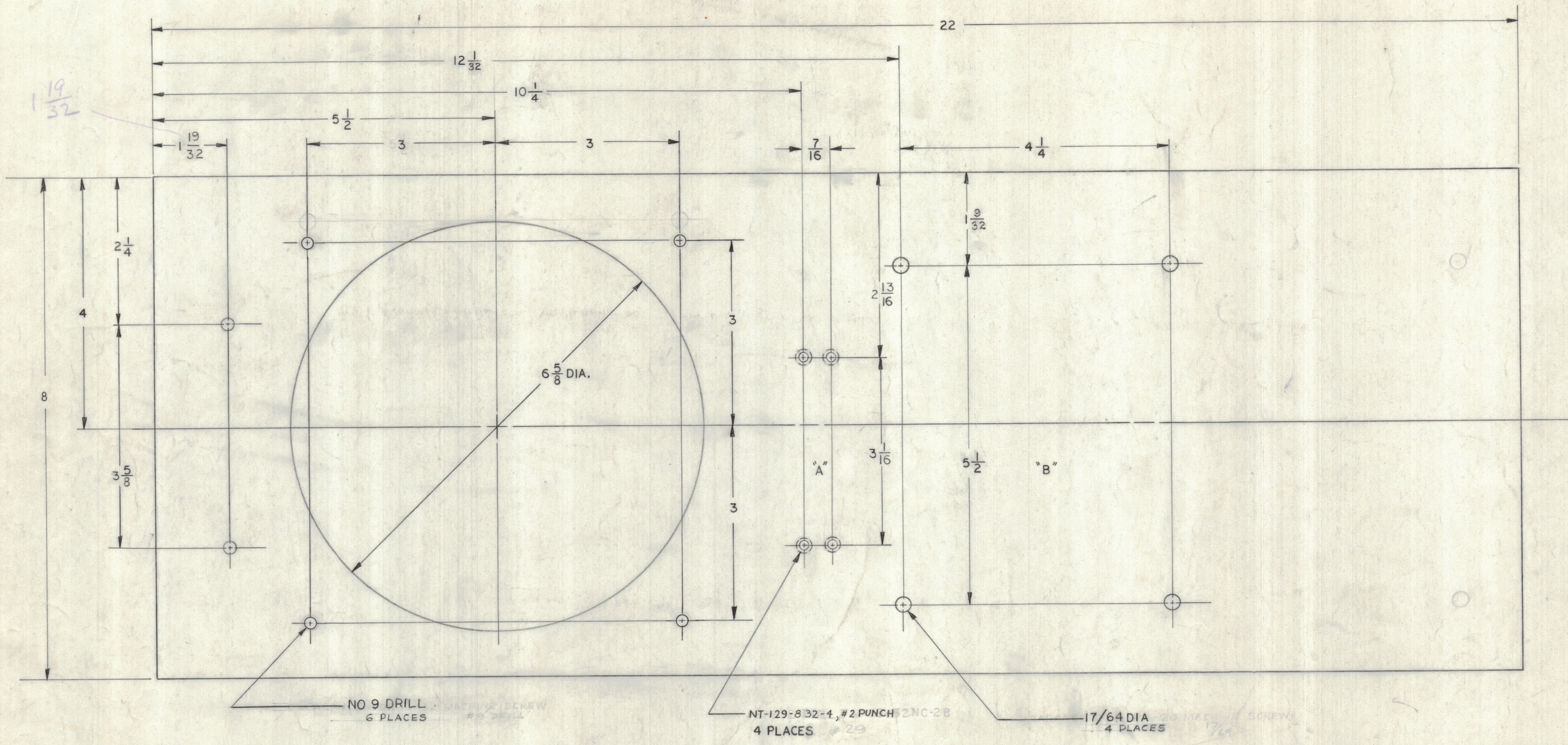


REVISIONS							
ZONE	LTR	DESCRIPTION	DATE	E. M. N. NO.	DRAFT	CHKD	APPD
A3	A	FINISH NOTE REVISED SEE ALSO SHEETS 2 THRU 9	18 MAR 68		PER	REL	REL
	X	DWG. NO WAS 40M12D7032	8-22-68		C. G. ...		
	Ø	ORIGINAL RELEASE FOR PRODUCTION	8-15-69		MT		



NOTE: A FOR TERMINAL STRIP
B FOR TRANSFORMER

SHEET 8 OBSOLETE

1	SPT-3KVHF	AP140
QTY / UNIT	MODEL USED ON	ASS'Y NO.
APPLICATION		
CODE		
NOTICE TO PERSONS RECEIVING THIS DRAWING		
THE TECHNICAL MATERIEL CORPORATION claims proprietary right in the material disclosed hereon. This drawing is issued in confidence for engineering information only and may not be reproduced or used to manufacture anything shown hereon without permission from THE TECHNICAL MATERIEL CORPORATION to the user. This drawing is loaned for mutual assistance and is subject to recall at any time.		

QTY. REQ.	ITEM	PART NO.	DESCRIPTION	SYMBOL
LIST OF MATERIAL				
THE TECHNICAL MATERIEL CORP. MAMARONECK, NEW YORK				
BASE PLATE SCREEN SUPPLY				
UNLESS OTHERWISE SPECIFIED DIMENSIONS ARE IN INCHES AND INCLUDE CHEMICALLY APPLIED OR PLATED FINISHES		FINAL APPROVAL DATE 2-28-68		
TOLERANCES ON		MECH. DES. DATE 12-27-67		
DECIMALS .X ± .05 .XX ± .01 .XXX ± .005		ELECT. DES. DATE 8-11-69		
FRACTIONS ± 1/64 ANGLES ± 0° -30'		CHECKED DATE 12-27-67		
MATERIAL 081 ALUM. ALLOY 6061-T6		DRAWN DATE 12-27-67		
FINISH ETCH AND GOLD IRIDITE		SIZE CODE IDENT. NO. DWG NO. ISSUE D 82679 40MMS8341 Ø		
SCALE 1:1				SHEET 1 OF 9