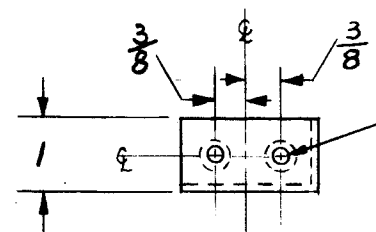
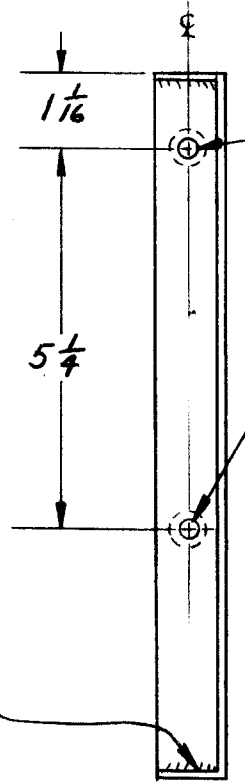
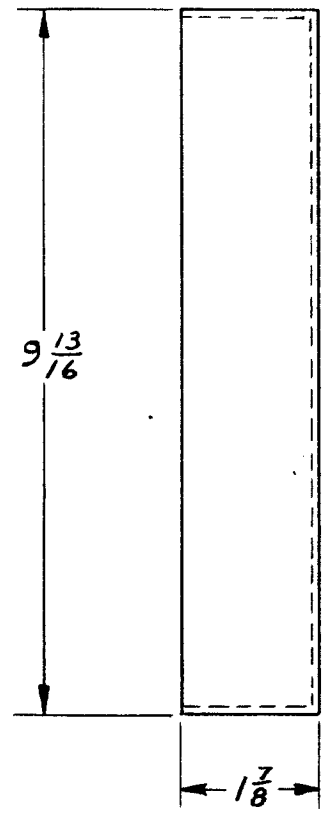


REVISIONS						
ZONE	LTR	DESCRIPTION	DATE	E.M.N.NO	DRAFT	CHKD
	Ø	ORIGINAL RELEASE	8/12/69	Ø		



NT-129-0832-6
 .221 DIA. HOLE EACH END
 (4 REQ.)



NT-129-1032-6
 .251 DIA HOLES
 (2 REQ.)

WELD BOTH ENDS

REQ'D	ITEM	PART NUMBER	DESCRIPTION	SYM.
2		NT-129-1032-6	SWAGE NUT	
4		NT-129-0832-6	SWAGE NUT	

LIST OF MATERIAL

2	SPT-3KVHF	AX8070
QTY / UNIT	MODEL USED ON	ASS'Y NO.
APPLICATION		
	CODE	

NOTICE TO PERSONS RECEIVING THIS DRAWING
 THE TECHNICAL MATERIEL CORPORATION claims proprietary right in the material disclosed hereon. This drawing is issued in confidence for engineering information only and may not be reproduced or used to manufacture anything shown hereon without permission from THE TECHNICAL MATERIEL CORPORATION to the user. This drawing is loaned for mutual assistance and is subject to recall at any time.

UNLESS OTHERWISE SPECIFIED DIMENSIONS ARE IN INCHES AND INCLUDE CHEMICALLY APPLIED OR PLATED FINISHES

DECIMALS .X ± .05 .XX ± .01 .XXX ± .005
 FRACTIONS 1/64 TOLS. ANGLES 0°-30'

MATERIAL .125 THK 5052-H32 ALUM

FINISH S404 YEL IRIDITE

FINAL APPROVAL [Signature] DATE 8-12-69
 MECH. DES. [Signature] DATE 8-14-69
 ELECT. DES. [Signature] DATE
 CHECKED [Signature] DATE
 DRAWN C. Grob DATE 6

THE TECHNICAL MATERIEL CORP.
 MAMARONECK, NEW YORK

MASTER CONT. MTG. ANGLES

SIZE B	CODE IDENT. NO. 82679	DWG NO. MS8281	ISSUE [Signature]
SCALE ~	SHEET 1 OF 1		