

5

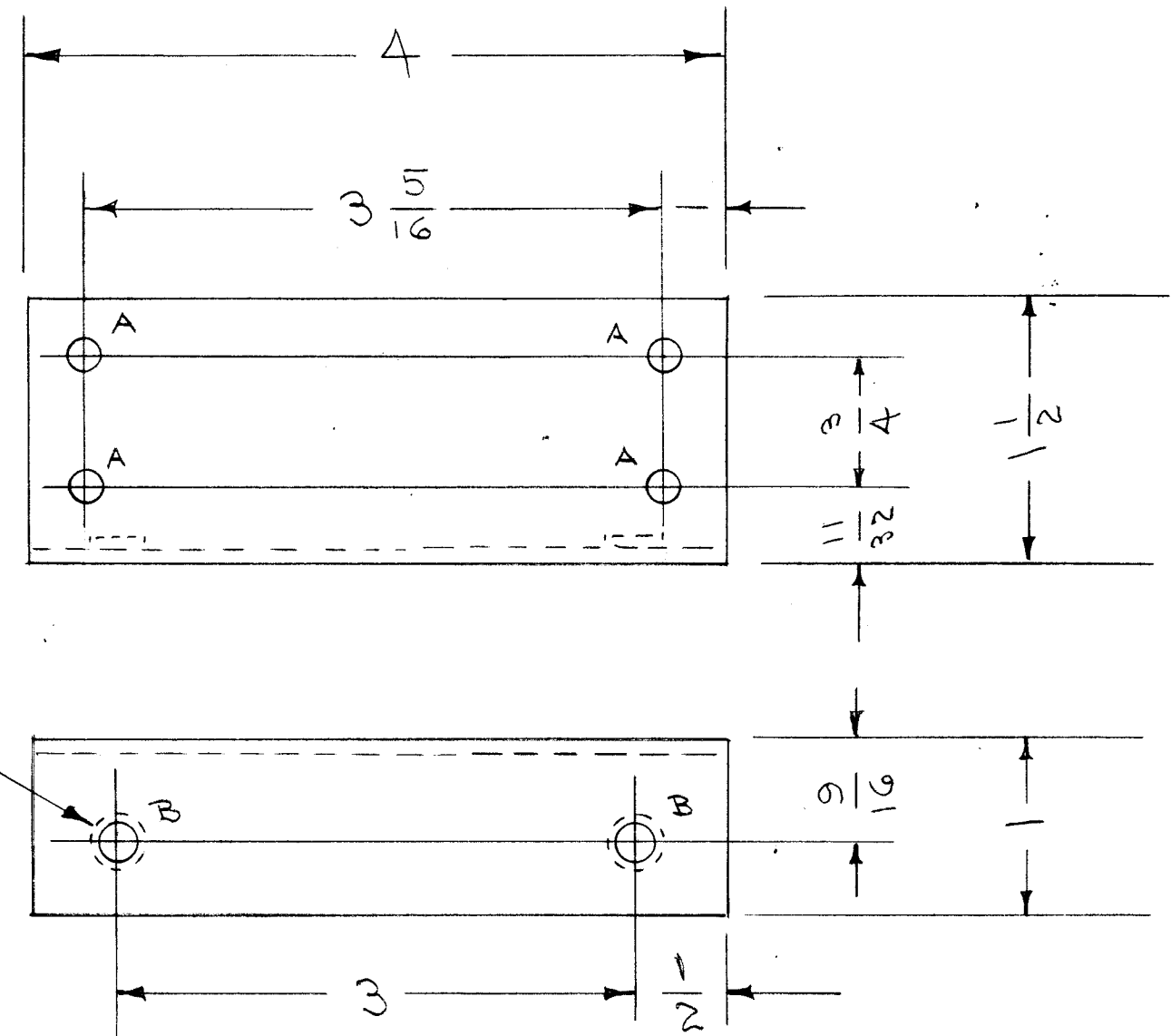
4

3

2

1

REVISIONS							
ZONE	LTR	DESCRIPTION	DATE	E.M.N.NO	DRAFT	CHKD	APPD
	Ø	ORIG. REL. FOR PROD	4.1.69	H	GE		JH



A - 1/64 DIA 4 REQ
 B - .250-.253 DIA 2 "

1

REQ'D	ITEM	PART NUMBER	DESCRIPTION	SYM.
2	1	NT129-1032-4	NUT, SWAGE	

LIST OF MATERIAL

1	SPT-3KVHF	AX8081
1	SPT-3K VHF	AX8080
QTY / UNIT	MODEL USED ON	ASS'Y NO.
APPLICATION		
	CODE	

UNLESS OTHERWISE SPECIFIED DIMENSIONS ARE IN INCHES AND INCLUDE CHEMICALLY APPLIED OR PLATED FINISHES

DECIMALS	FRACTIONS
.X ± .05	1/64
.XX ± .01	TOLS. ANGLES
.XXX ± .005	0°-30'

MATERIAL .081
5052 H32 ALUM

FINISH
5404 IRIDITE

FINAL APPROVED	DATE
<i>[Signature]</i>	4-1-69
MECH. DES.	DATE
A.G.C.	4-1-69
ELECT. DES.	DATE
CHECKED	DATE
<i>[Signature]</i>	4-1-69
DRAWN	DATE
C.D. DEAN	5-21-68

THE TECHNICAL MATERIEL CORP.
MAMARONECK, NEW YORK

BIRD COUPLER MOUNT

NOTICE TO PERSONS RECEIVING THIS DRAWING
 THE TECHNICAL MATERIEL CORPORATION claims proprietary right in the material disclosed hereon. This drawing is issued in confidence for engineering information only and may not be reproduced or used to manufacture anything shown hereon without permission from THE TECHNICAL MATERIEL CORPORATION to the user. This drawing is loaned for mutual assistance and is subject to recall at any time.

SIZE	CODE IDENT. NO.	DWG NO.	ISSUE
B	82679	MS8268	Ø
SCALE 1:1		SHEET 1 OF 1	