

5

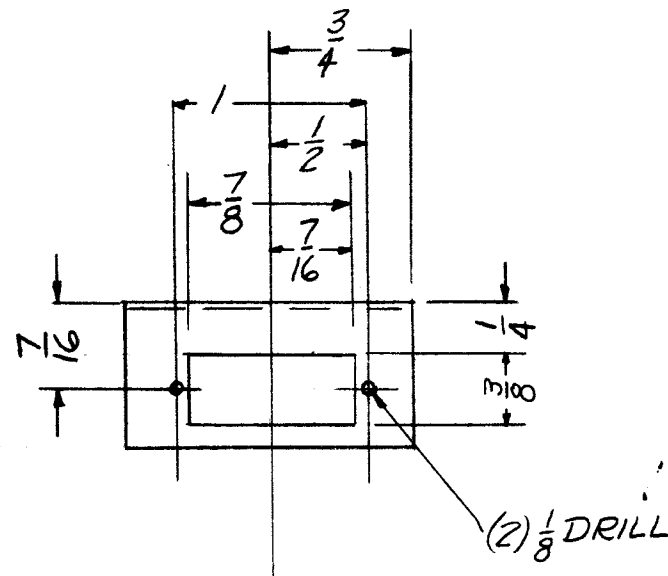
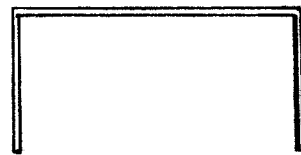
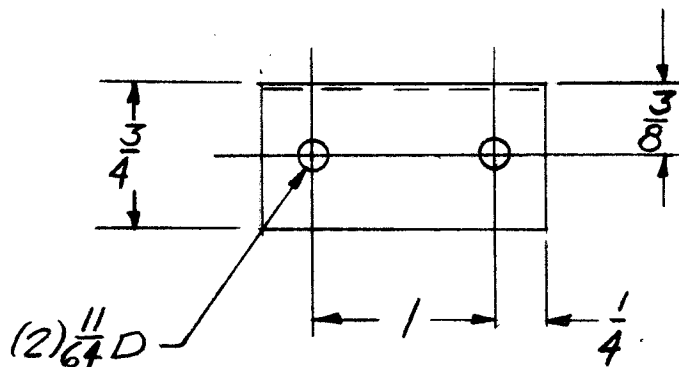
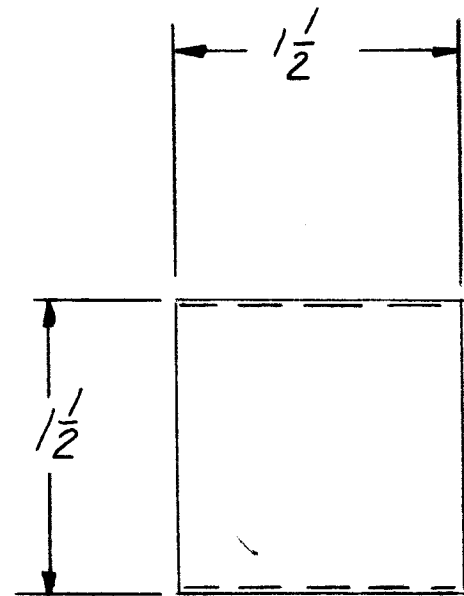
4

3

2

1

REVISIONS						
ZONE	LTR	DESCRIPTION	DATE	E.M.N.NO	DRAFT	CHKD APPD



2 / 13C		BA 71	
QTY / UNIT	MODEL USED ON	ASS'Y NO.	
APPLICATION			
CODE			
<p>NOTICE TO PERSONS RECEIVING THIS DRAWING THE TECHNICAL MATERIEL CORPORATION claims proprietary right in the material disclosed hereon. This drawing is issued in confidence for engineering information only and may not be reproduced or used to manufacture anything shown hereon without permission from THE TECHNICAL MATERIEL CORPORATION to the user. This drawing is loaned for mutual assistance and is subject to recall at any time.</p>			

UNLESS OTHERWISE SPECIFIED DIMENSIONS ARE IN INCHES AND INCLUDE CHEMICALLY APPLIED OR PLATED FINISHES

DECIMALS	FRACTIONS
.X ± .05	1/64
.XX ± .01	TOLS. ANGLES
.XXX ± .005	0° .30'

MATERIAL
.064 ALUM
5052 + H-32

FINISH
S404-IRIDITE

REQ'D	ITEM	PART NUMBER	DESCRIPTION	SYM.
LIST OF MATERIAL				
<p>FINAL APPROVAL <i>[Signature]</i> DATE 6-6-68</p> <p>MECH. DES. <i>[Signature]</i> DATE 3-4-68</p> <p>ELECT. DES. <i>[Signature]</i> DATE 3-4-68</p> <p>CHECKED <i>[Signature]</i> DATE 5-24-68</p> <p>DRAWN <i>[Signature]</i> DATE 3-5-68</p>				
<p>THE TECHNICAL MATERIEL CORP. MAMARONECK, NEW YORK</p> <p>CONN. MTG. BKT. UNIT 13C</p>				
SIZE	CODE IDENT. NO.	DWG NO.	ISSUE	
B	82679	MS 8209	Ø	
SCALE: FULL			SHEET	OF