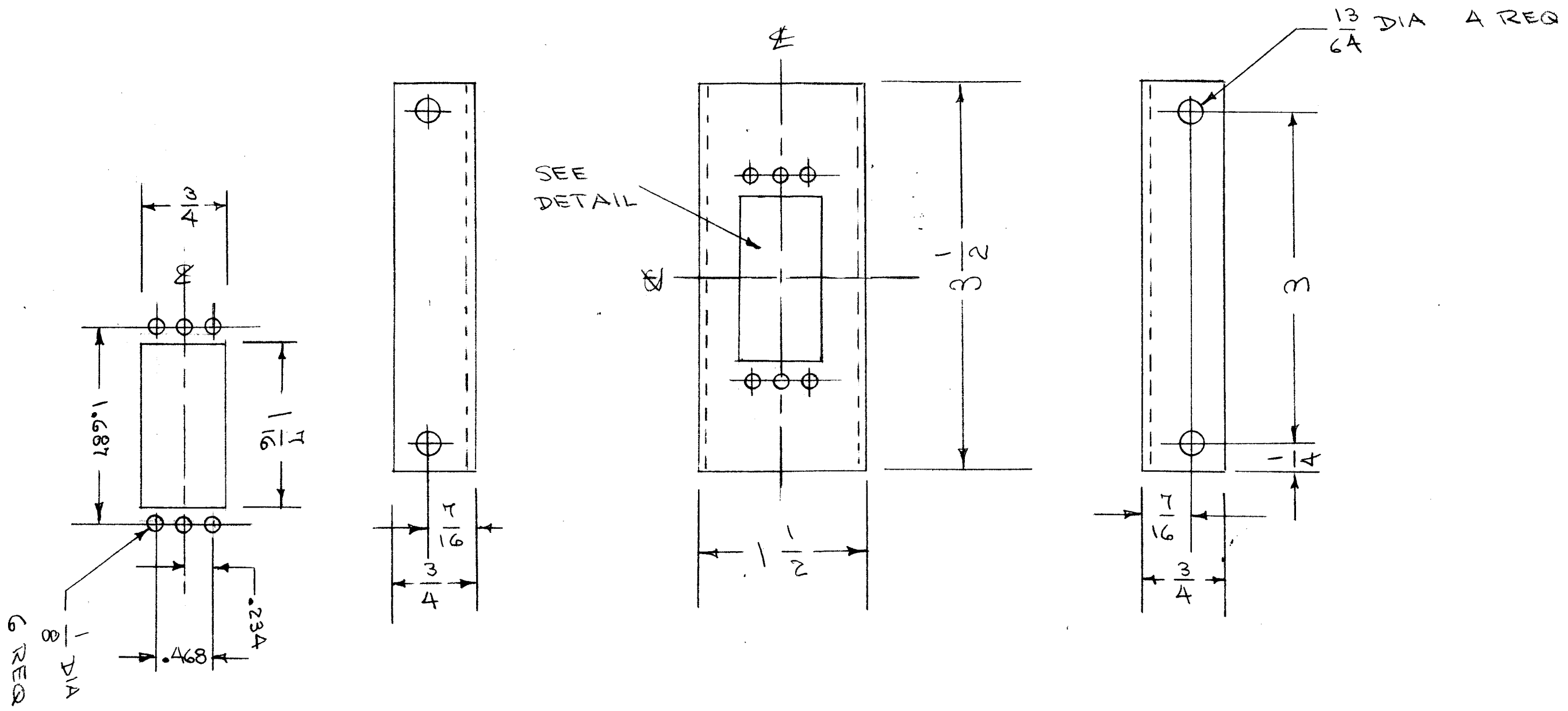


REVISIONS					
ZONE	LTR	DESCRIPTION	DATE	E.M.N.NO	APPD



CUTOUT DETAIL

1	16D	
QTY / UNIT	MODEL USED ON	ASS'Y NO.
APPLICATION		
	CODE	

NOTICE TO PERSONS RECEIVING THIS DRAWING
 THE TECHNICAL MATERIEL CORPORATION claims proprietary right in the material disclosed hereon. This drawing is issued in confidence for engineering information only and may not be reproduced or used to manufacture anything shown hereon without permission from THE TECHNICAL MATERIEL CORPORATION to the user. This drawing is loaned for mutual assistance and is subject to recall at any time.

UNLESS OTHERWISE SPECIFIED DIMENSIONS ARE IN INCHES AND INCLUDE CHEMICALLY APPLIED OR PLATED FINISHES

DECIMALS	FRACTIONS
.X ± .05	1/64
.XX ± .01	TOLS. ANGLES
.XXX ± .005	0° .30'

MATERIAL .064
 5052 H32 ALUM
 FINISH S404
 IRIDITE

REQ'D	ITEM	PART NUMBER	DESCRIPTION	SYM.
LIST OF MATERIAL				
THE TECHNICAL MATERIEL CORP. MAMARONECK, NEW YORK				
CONN. BRKT.				
FINAL APPROVAL <i>[Signature]</i>		DATE 3/24/68	ISSUE Ø	
MECH. DES. <i>[Signature]</i>		DATE 1-25-68		
ELECT. DES.		DATE		
CHECKED		DATE		
DRAWN C.D. DEAN		DATE 1-25-68	SIZE B	CODE IDENT. NO. 82679
SCALE			DWG NO. MS 8189	SHEET OF