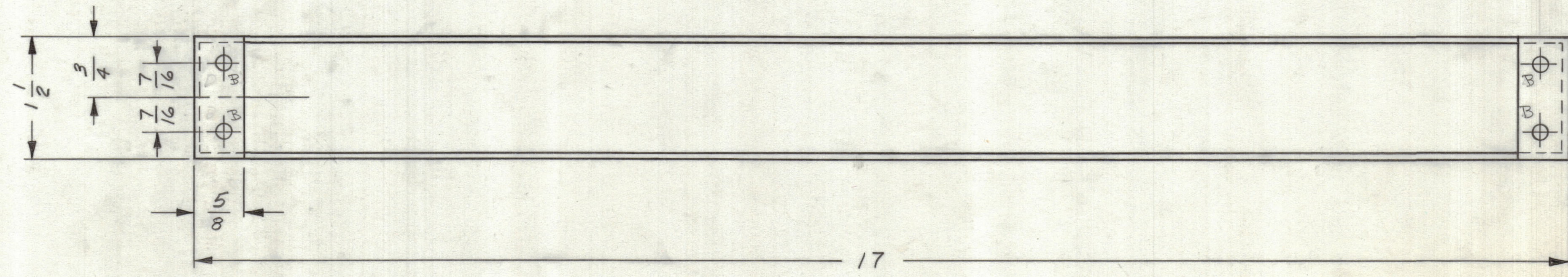
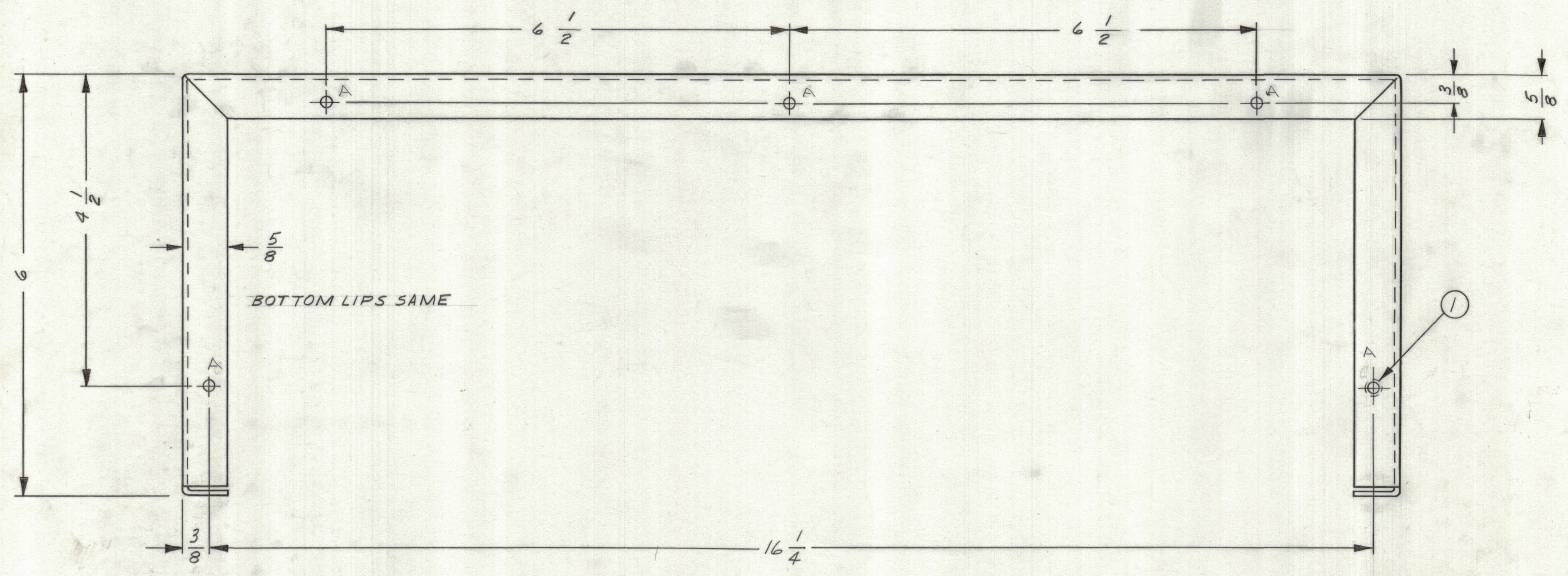
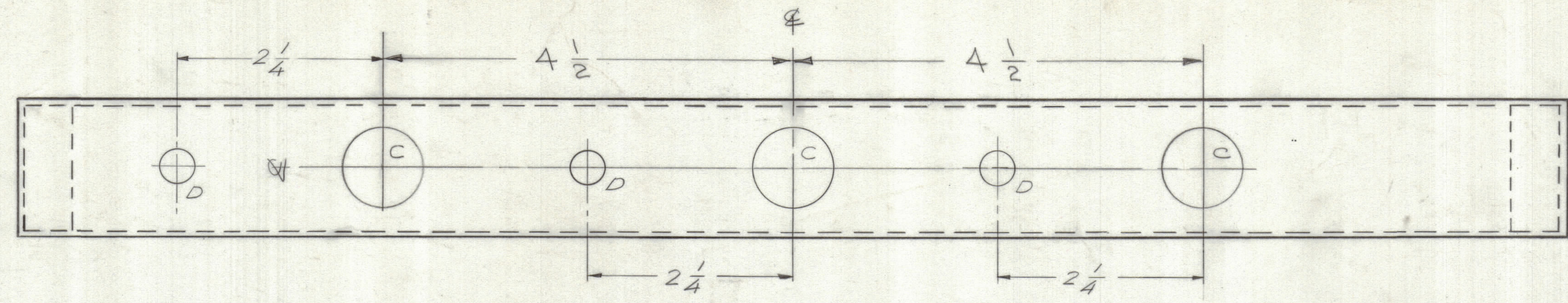


		REVISIONS					
ZONE	LTR	DESCRIPTION	DATE	E.M.N.NO	DRAFT	CHKD	APPD
X1		(3) D HOLES, (1) C HOLE ADDED	5/15/69	X1	GE		
Q		ORIGINAL RELEASE	5/15/69	Q	GE		



HOLES: A - 1/8" DIA DIA 1/16" DIA DIA  
 B - 3/16" DIA DIA 1/16" DIA DIA  
 C - 7/8" DIA DIA 1/16" DIA DIA

HOLES	SIZE (DIA)	QTY REQD
A	.161 - .164	10
B	3/16 (.187)	4
C	7/8 (.875)	3
D	3/8 (.375)	3

QTY. REQ.	ITEM	PART NO.	DESCRIPTION	SYMBOL
10	1	NT129-440-4	NUT, ROUND, SWAGE TYPE	

FINAL APPROVAL		DATE	THE TECHNICAL MATERIEL CORP. MAMARONECK, NEW YORK
MECH. DES.	<i>JM</i>	5/15/69	
ELECT. DES.			
CHECKED	<i>JG</i>	5/15/69	
DRAWN	G.E. ZUCKER	12-12-67	
LIST OF MATERIAL			WRAPAROUND TM19 SWITCHING PANEL
SIZE	CODE IDENT. NO.	DWG NO.	
D	82679	MS8145	
SCALE			SHEET OF

QTY / UNIT	MODEL USED ON	ASSY NO.
1	AX8011 17	
APPLICATION		
CODE		
MATERIAL .064 THK 5052 H32 ALUM		
FINISH S404 IRIDITE		

NOTICE TO PERSONS RECEIVING THIS DRAWING  
 THE TECHNICAL MATERIEL CORPORATION claims proprietary right in the material disclosed hereon. This drawing is issued in confidence for engineering information only and may not be reproduced or used to manufacture anything shown hereon without permission from THE TECHNICAL MATERIEL CORPORATION to the user. This drawing is loaned for mutual assistance and is subject to recall at any time.