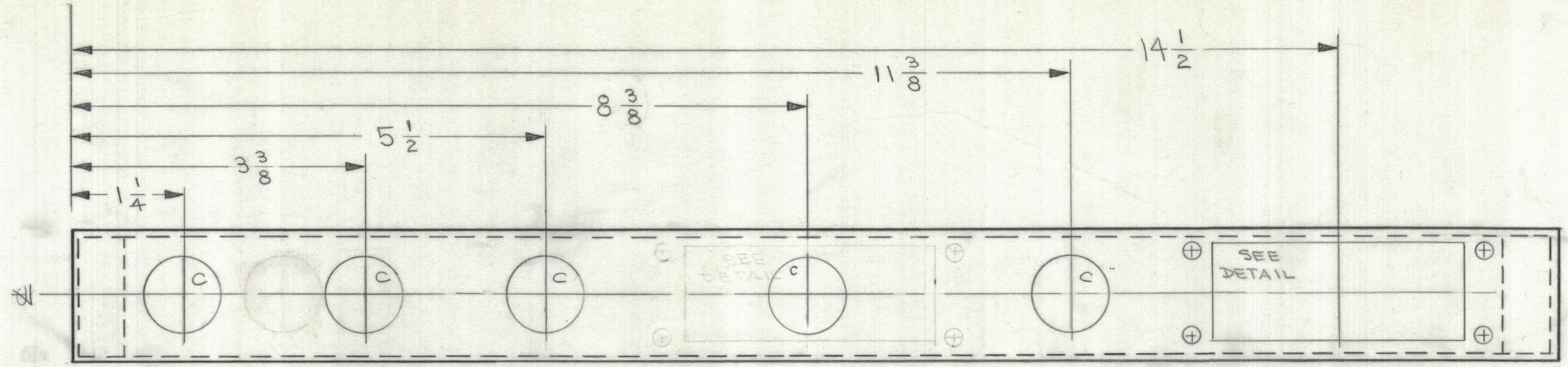
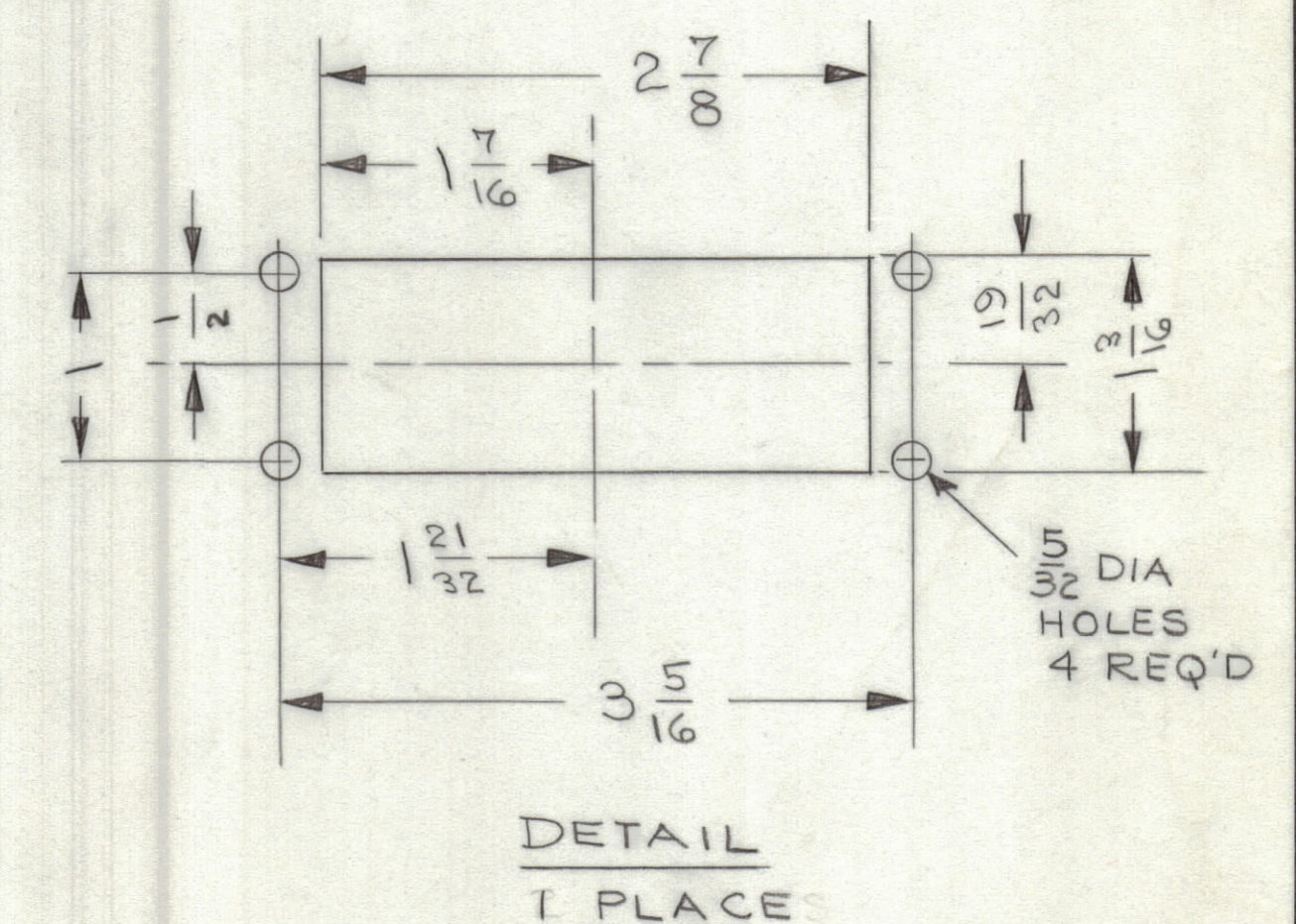
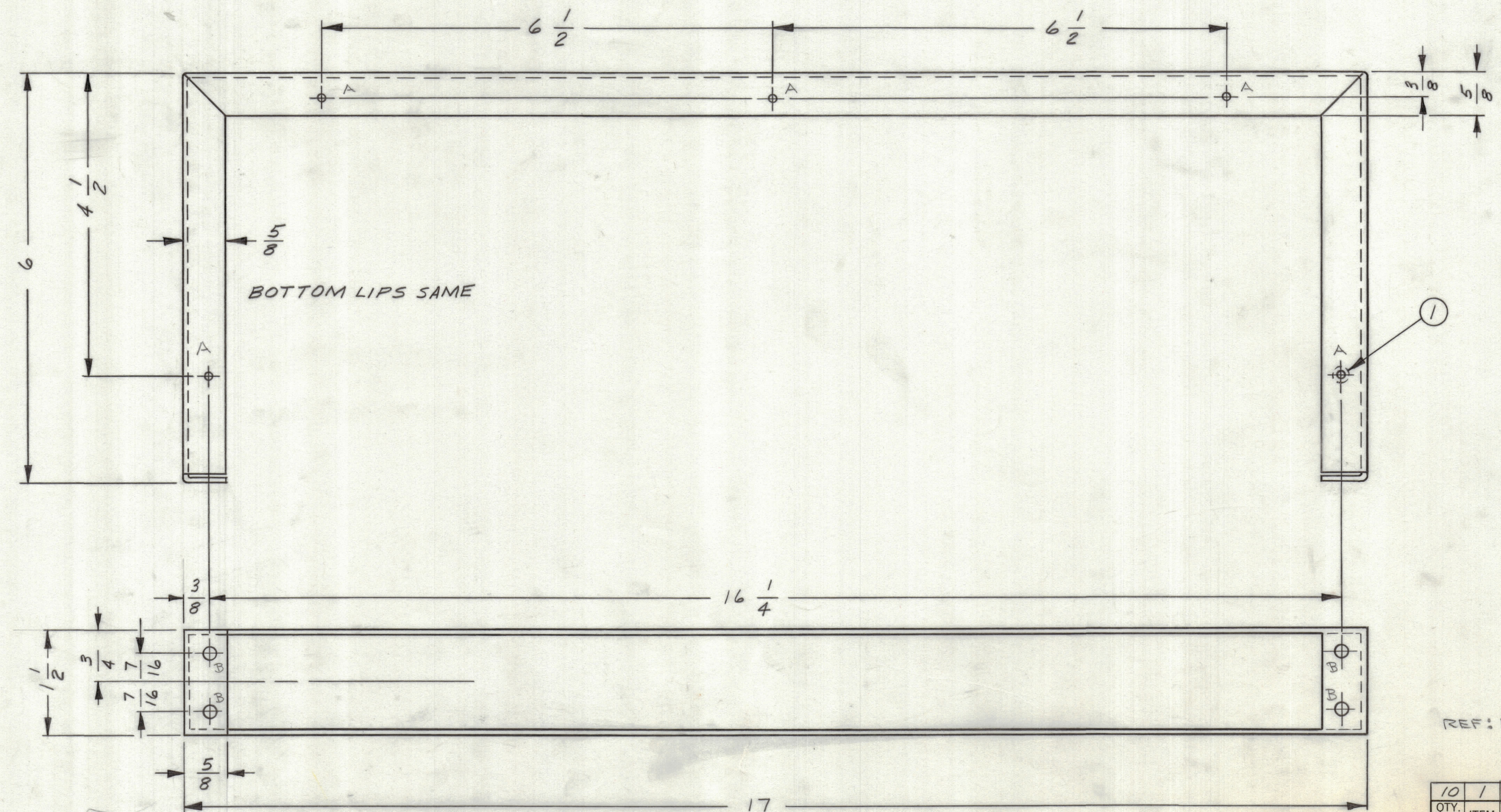


ZONE		LTR		DESCRIPTION		REVISIONS				
DATE	E.M.N.	NO	DRAFT	CHKD	APPD					



LETTER	DIAMETER	REQUIREMENTS
A	.161-.164 DIA	10 REQ
B	3/16 (.1875)	4 "
C	1/8 (.125)	5 "



REF: LD 8050

QTY. REQ.	ITEM	PART NO.	DESCRIPTION	SYMBOL
10	1	NT129-440-4	NUT, ROUND, SWAGE TYPE	

FINAL APPROVAL		DATE	THE TECHNICAL MATERIEL CORP. MAMARONECK, NEW YORK
MECH. DES.	<i>STW</i>	4-22-68	
ELECT. DES.			
CHECKED	<i>WMB</i>	4-29-68	
DRAWN	G.E. ZUCKER	12-13-67	WRAPAROUND TM19/TO4 SWITCHING PANEL

SIZE	CODE IDENT. NO.	DWG NO.	ISSUE
D	82679	MS8142	1

QTY / UNIT	MODEL USED ON	ASS'Y NO.
1	AX 8010 19	

APPLICATION	
CODE	

TOLERANCES ON	
DECIMALS	FRACTIONS
.X ± .05	± 1/64
.XX ± .01	ANGLES
.XXX ± .005	± 0°-30'

MATERIAL	FINISH
.064 THK 5052 H32 ALUM	5404 IRIDITE

NOTICE TO PERSONS RECEIVING THIS DRAWING  
 THE TECHNICAL MATERIEL CORPORATION claims proprietary right in the material disclosed hereon. This drawing is issued in confidence for engineering information only and may not be reproduced or used to manufacture anything shown hereon without permission from THE TECHNICAL MATERIEL CORPORATION to the user. This drawing is loaned for mutual assistance and is subject to recall at any time.